



element14

EN - For pricing and availability in your local country please visit one of the below links:

DE - Informationen zu Preisen und Verfügbarkeit in Ihrem Land erhalten Sie über die unten aufgeführten Links:

FR - Pour connaître les tarifs et la disponibilité dans votre pays, cliquez sur l'un des liens suivants:

[SD211DE-2](#)

EN
This Datasheet is presented by
the manufacturer

DE
Dieses Datenblatt wird vom
Hersteller bereitgestellt

FR
Cette fiche technique est
présentée par le fabricant



N-Channel Lateral DMOS FETs (Available Only In Extended Hi-Rel Flow)

PRODUCT SUMMARY					
Part Number	V _{(BR)DS} Min (V)	V _{GS(th)} Max (V)	r _{DS(on)} Max (Ω)	C _{rSS} Max (pF)	t _{ON} Max (ns)
SD211DE-2	30	1.5	45 @ V _{GS} = 10 V	0.5	2
SD213DE-2	10	1.5	45 @ V _{GS} = 10 V	0.5	2
SD215DE-2	20	1.5	45 @ V _{GS} = 10 V	0.5	2

FEATURES

- Ultra-High Speed Switching—t_{ON}: 1 ns
- Ultra-Low Reverse Capacitance: 0.2 pF
- Low Guaranteed r_{DS} @ 5 V
- Low Turn-On Threshold Voltage
- N-Channel Enhancement Mode

BENEFITS

- High Speed System Performance
- Low Insertion Loss at High Frequencies
- Low Transfer Signal Loss
- Simple Driver Requirement
- Single Supply Operation

APPLICATIONS

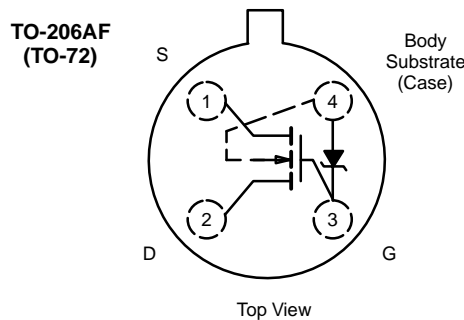
- Fast Analog Switch
- Fast Sample-and-Holds
- Pixel-Rate Switching
- DAC Deglitchers
- High-Speed Driver

DESCRIPTION

The SD211DE-2 series consists of enhancement-mode MOSFETs designed for high speed low-glitch switching in audio, video, and high-frequency applications. The SD211DE-2 may be used for ±5-V analog switching or as a high speed driver of the SD214DE-2. The SD214DE-2 is normally used for ±10-V analog switching. These MOSFETs utilize lateral construction to achieve low capacitance and ultra-fast switching speeds. An integrated Zener diode

provides ESD protection. These devices feature a poly-silicon gate for manufacturing reliability.

The SD211DE/213DE/215DE are available only in the “-2” extended hi-rel flow. The Vishay Siliconix “-2” flow complies with the requirements of MIL-PRF-19500 for JANTX discrete devices.



ABSOLUTE MAXIMUM RATINGS (T_A = 25 °C UNLESS OTHERWISE NOTED)

Gate-Drain, Gate-Source Voltage (SD211DE-2)	-30/25 V	Drain-Substrate Voltage (SD211DE-2)	30 V
(SD213DE-2)	-15/25 V	(SD213DE-2)	15 V
(SD215DE-2)	-25/30 V	(SD215DE-2)	25 V
Gate-Substrate Voltage (Derate 3 mW/°C above 25°C)		Source-Substrate Voltage (SD211DE-2)	15 V
(SD211DE-2)	-0.3/25 V	(SD213DE-2)	15 V
(SD213DE-2)	-0.3/25 V	(SD215DE-2)	25 V
(SD215DE-2)	-0.3/30 V	Drain Current	50 mA
Drain-Source Voltage (SD211DE-2)	30 V	Lead Temperature (1/16" from case for 10 seconds)	300°C
(SD213DE-2)	10 V	Storage Temperature	-65 to 150°C
(SD215DE-2)	20 V	Operating Junction Temperature	-55 to 125°C
Source-Drain Voltage (SD211DE-2)	10 V	Power Dissipation (Derate 3 mW/°C above 25°C)	300 mW
(SD213DE-2)	10 V		
(SD215DE-2)	20 V		

Applications Information—See Applications Note AN502

SPECIFICATIONS ^a											
Parameter	Symbol ^b	Test Conditions ^b	Typ ^c	Limits						Unit	
				211DE-2		213 DE-2		215 DE-2			
				Min	Max	Min	Max	Min	Max		
Static											
Drain-Source Breakdown Voltage	$V_{(BR)DS}$	$V_{GS} = V_{BS} = 0\text{ V}, I_D = 10\ \mu\text{A}$	35	30						V	
		$V_{GS} = V_{BS} = -5\text{ V}, I_D = 10\ \text{nA}$	30	10		10		20			
Source-Drain Breakdown Voltage	$V_{(BR)SD}$	$V_{GD} = V_{BD} = -5\text{ V}, I_S = 10\ \text{nA}$	22	10		10		20			
Drain-Substrate Breakdown Voltage	$V_{(BR)DBO}$	$V_{GB} = 0\text{ V}, I_D = 10\ \text{nA}$ Source Open	35	15		15		25			
Source-Substrate Breakdown Voltage	$V_{(BR)SBO}$	$V_{GB} = 0\text{ V}, I_S = 10\ \mu\text{A}$ Drain Open	35	15		15		25			
Drain-Source Leakage	$I_{DS(off)}$	$V_{GS} = V_{BS} = -5\text{ V}$	$V_{DS} = 10\text{ V}$	0.4		10		10		nA	
			$V_{DS} = 20\text{ V}$	0.9					10		
Source-Drain Leakage	$I_{SD(off)}$	$V_{GD} = V_{BD} = -5\text{ V}$	$V_{SD} = 10\text{ V}$	0.5		10		10			
			$V_{SD} = 20\text{ V}$	1					10		
Gate Leakage	I_{GBS}	$V_{DB} = V_{SB} = 0\text{ V}, V_{GB} = 30\text{ V}$	0.01		100		100		100		
Threshold Voltage	$V_{GS(th)}$	$V_{DS} = V_{GS}, I_D = 1\ \mu\text{A}, V_{SB} = 0\text{ V}$	0.8	0.5	1.5	0.1	1.5	0.1	1.5	V	
Drain-Source On-Resistance	$r_{DS(on)}$	$V_{SB} = 0\text{ V}$ $I_D = 1\ \text{mA}$	$V_{GS} = 5\text{ V}$	58		70		70		70	Ω
			$V_{GS} = 10\text{ V}$	38		45		45		45	
			$V_{GS} = 15\text{ V}$	30							
			$V_{GS} = 20\text{ V}$	26							
			$V_{GS} = 25\text{ V}$	24							
Dynamic											
Forward Transconductance	g_{fs}	$V_{DS} = 10\text{ V}, V_{SB} = 0\text{ V},$ $I_D = 20\ \text{mA}, f = 1\ \text{kHz}$	11	10		10		10		mS	
Gate Node Capacitance	$C_{(GS+GD+GB)}$	$V_{DS} = 10\text{ V}, f = 1\ \text{MHz}$ $V_{GS} = V_{BS} = -15\text{ V}$	2.5		3.5		3.5		3.5	pF	
Drain Node Capacitance	$C_{(GD+DB)}$		1.1		1.5		1.5		1.5		
Source Node Capacitance	$C_{(GS+SB)}$		3.7		5.5		5.5		5.5		
Reverse Transfer Capacitance	C_{rss}		0.2		0.5		0.5		0.5		
Switching											
Turn-On Time	$t_{d(on)}$	$V_{SB} = 0\text{ V}, V_{IN}\ 0\ \text{to}\ 5\text{ V}, R_G = 25\ \Omega$ $V_{DD} = 5\text{ V}, R_L = 680\ \Omega$	0.5		1		1		1	ns	
	t_r		0.6		1		1		1		
Turn-Off Time	$t_{d(off)}$		2								
	t_f		6								

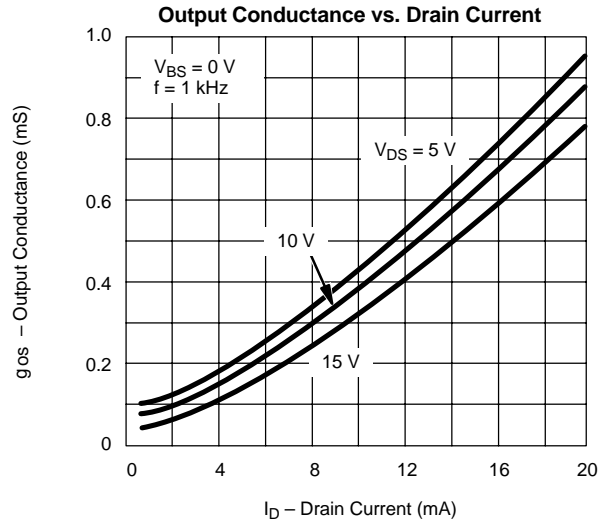
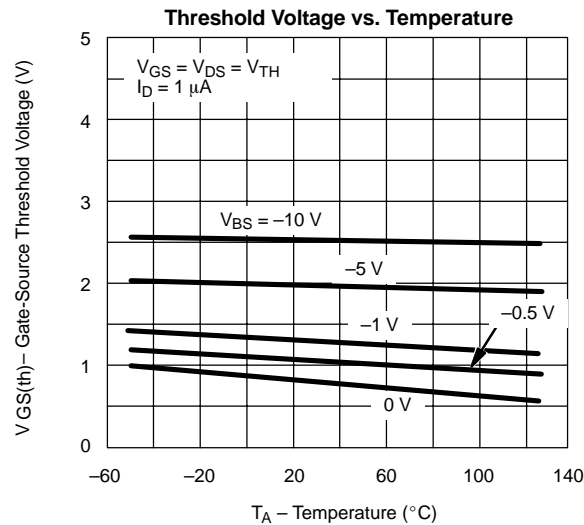
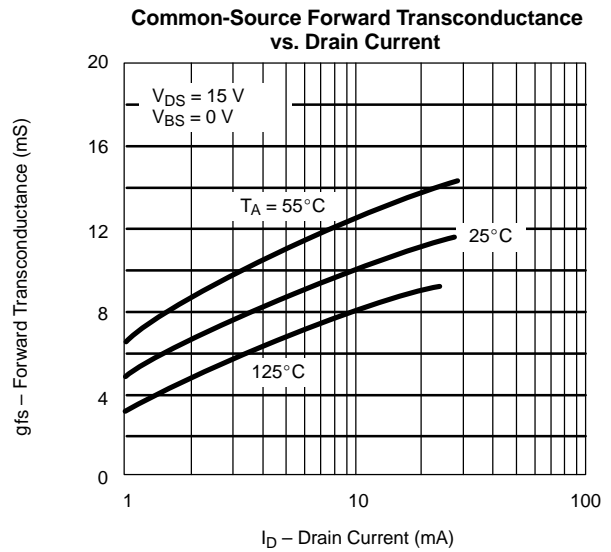
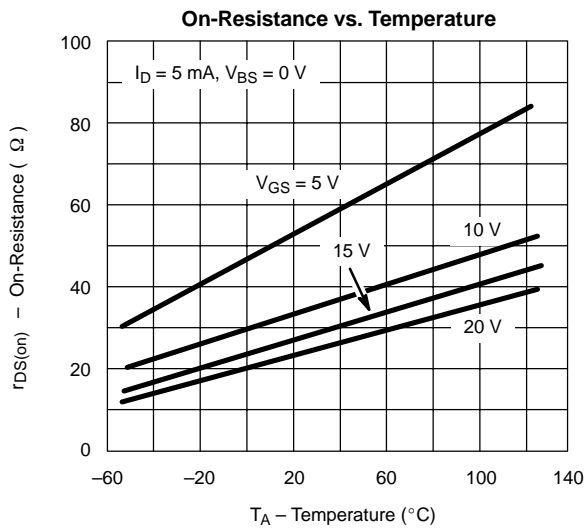
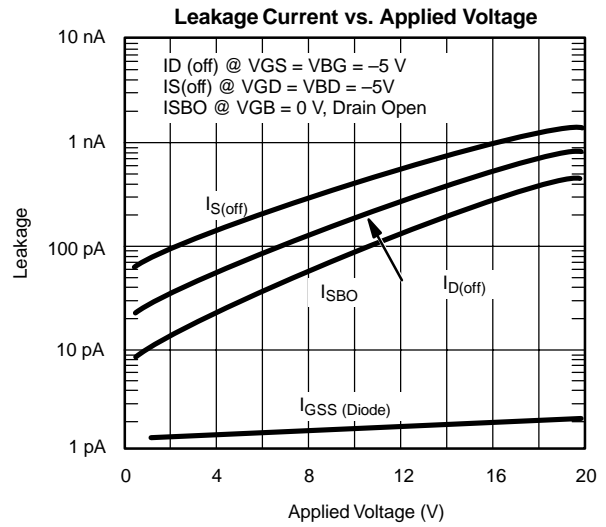
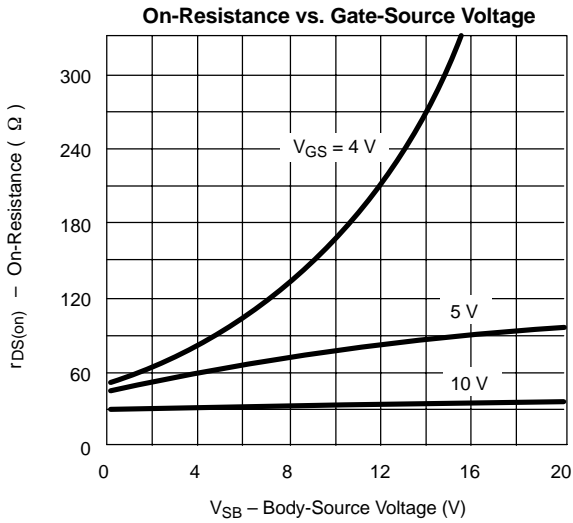
Notes:

- $T_A = 25^\circ\text{C}$ unless otherwise noted.
- B is the body (substrate), and (BR) is breakdown.
- Typical values are for DESIGN AID ONLY, not guaranteed nor subject to production testing.

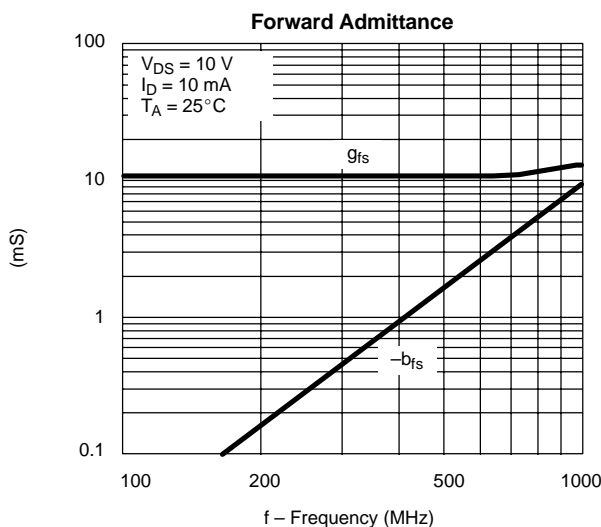
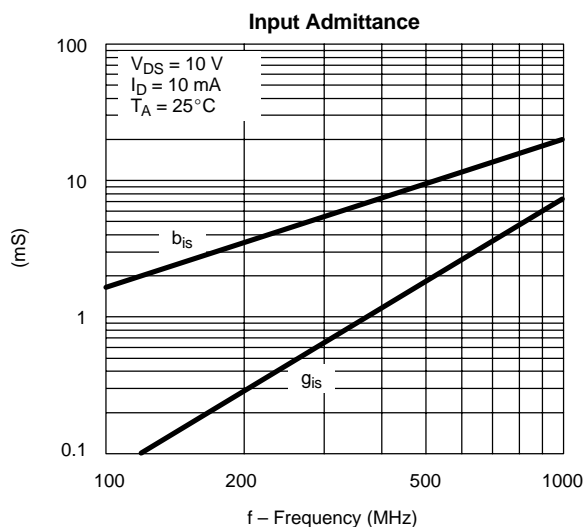
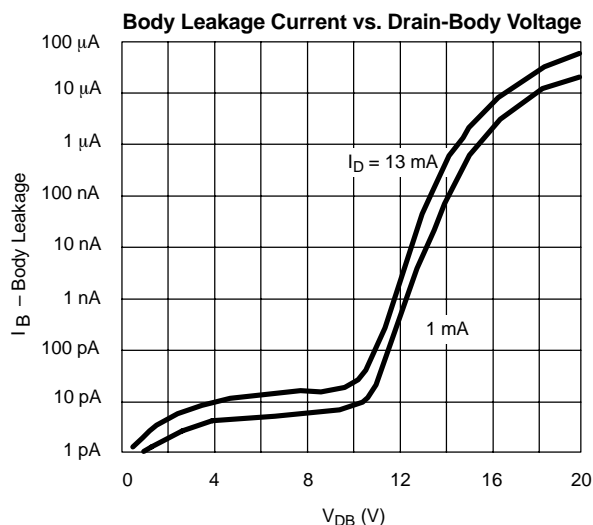
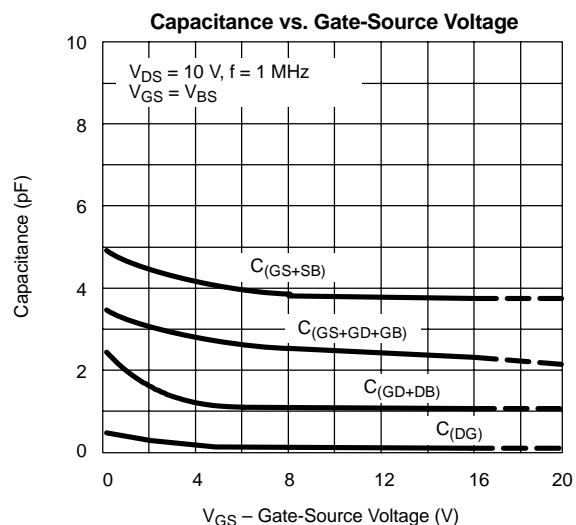
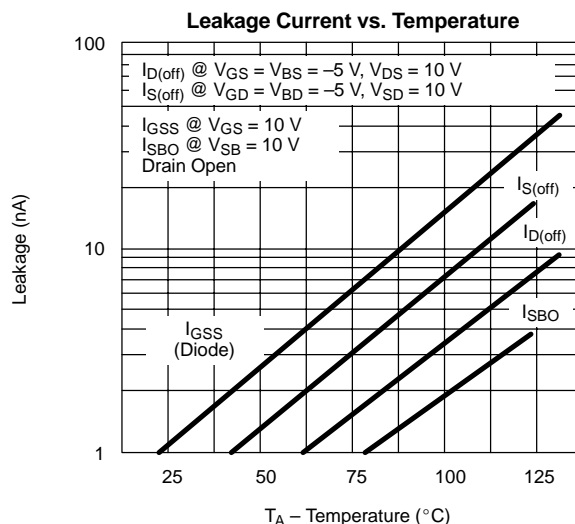
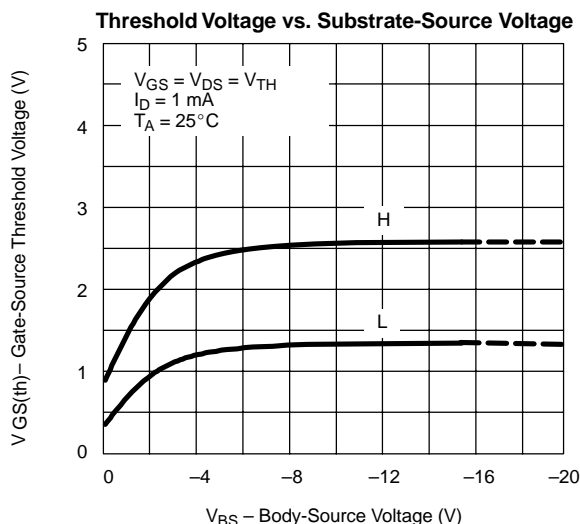
DMCBA



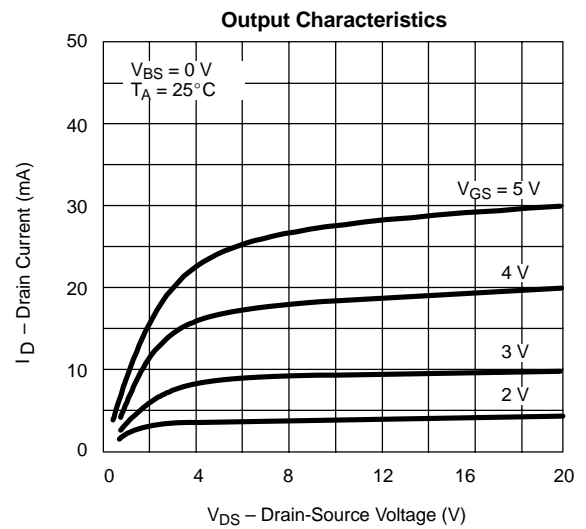
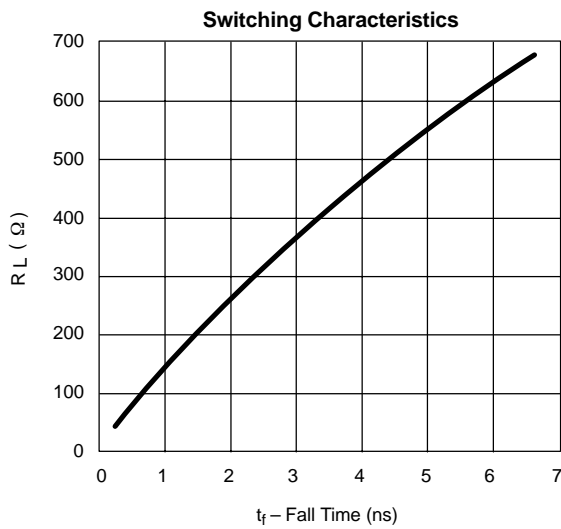
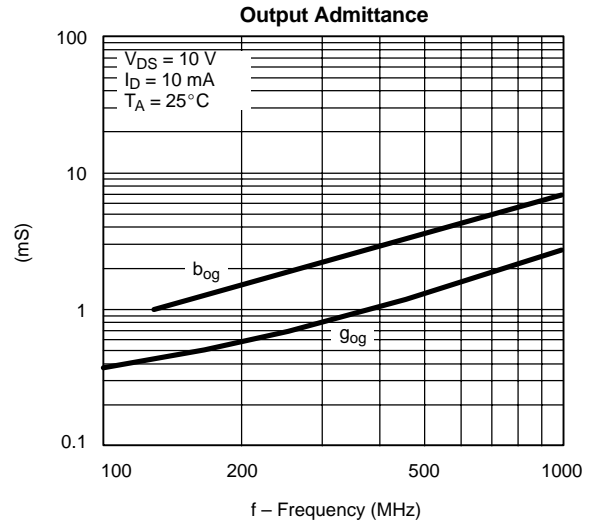
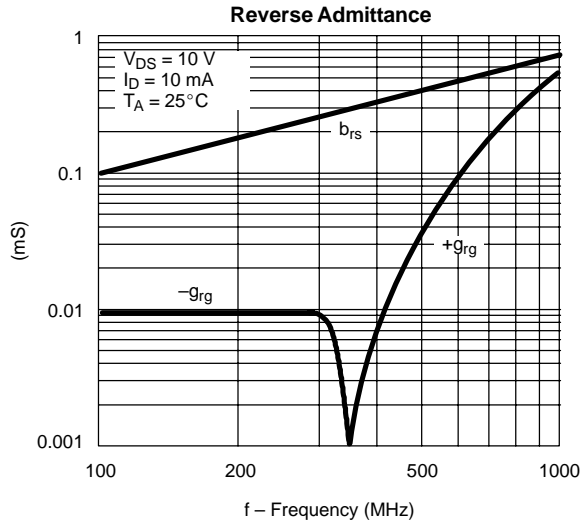
TYPICAL CHARACTERISTICS (25°C UNLESS NOTED)



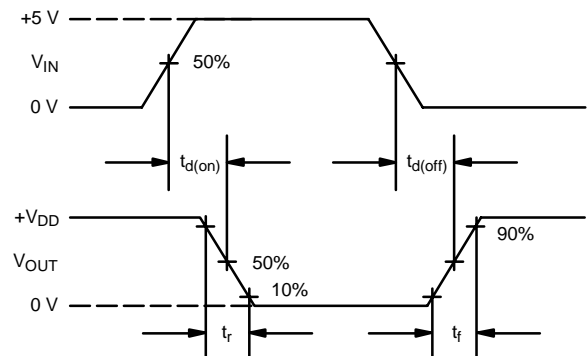
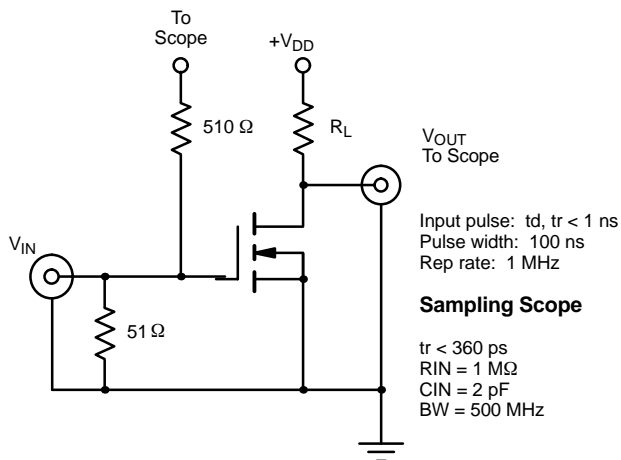
TYPICAL CHARACTERISTICS (25 °C UNLESS NOTED)



TYPICAL CHARACTERISTICS (25°C UNLESS NOTED)



SWITCHING TIME TEST CIRCUIT





Disclaimer

All product specifications and data are subject to change without notice.

Vishay Intertechnology, Inc., its affiliates, agents, and employees, and all persons acting on its or their behalf (collectively, "Vishay"), disclaim any and all liability for any errors, inaccuracies or incompleteness contained herein or in any other disclosure relating to any product.

Vishay disclaims any and all liability arising out of the use or application of any product described herein or of any information provided herein to the maximum extent permitted by law. The product specifications do not expand or otherwise modify Vishay's terms and conditions of purchase, including but not limited to the warranty expressed therein, which apply to these products.

No license, express or implied, by estoppel or otherwise, to any intellectual property rights is granted by this document or by any conduct of Vishay.

The products shown herein are not designed for use in medical, life-saving, or life-sustaining applications unless otherwise expressly indicated. Customers using or selling Vishay products not expressly indicated for use in such applications do so entirely at their own risk and agree to fully indemnify Vishay for any damages arising or resulting from such use or sale. Please contact authorized Vishay personnel to obtain written terms and conditions regarding products designed for such applications.

Product names and markings noted herein may be trademarks of their respective owners.



element14

EN - For pricing and availability in your local country please visit one of the below links:

DE - Informationen zu Preisen und Verfügbarkeit in Ihrem Land erhalten Sie über die unten aufgeführten Links:

FR - Pour connaître les tarifs et la disponibilité dans votre pays, cliquez sur l'un des liens suivants:

[SD211DE-2](#)

EN
This Datasheet is presented by
the manufacturer

DE
Dieses Datenblatt wird vom
Hersteller bereitgestellt

FR
Cette fiche technique est
présentée par le fabricant