

Chroma Systems Solutions, Inc.

# 63200 Firmware Update Procedures

**63200 DC Load**

Keywords: 63200 DC loads, Firmware, ADLS

# 63200 Firmware Update Procedures

Title:

Product Family: **63200 DC Load**

## Abstract

Chroma 63200 series electronic loads can be brought up to date by updating firmware when no hardware change has been made. ADLS software is required to do firmware update.

## Solution

What is needed: ADLS, Firmware package

1 Launch ADLS software and configure all the parameters in the window starting from 1. Select target.

2 Click on open profile, and load the initialize profile (extension .ini) under File tab. locate initialize profile by selecting the path the firmware package is saved. Load the initialize profile. ADLS should display the correspond unit name after load the right profile.

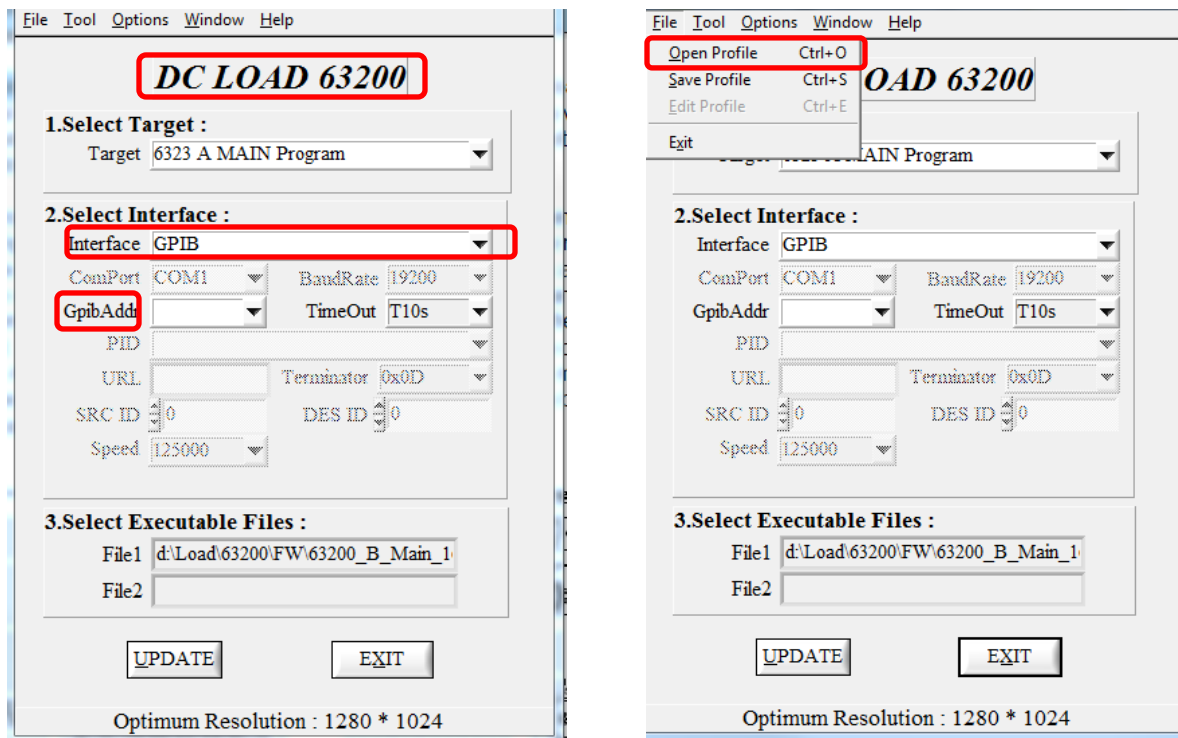


Figure 1 ADLS window

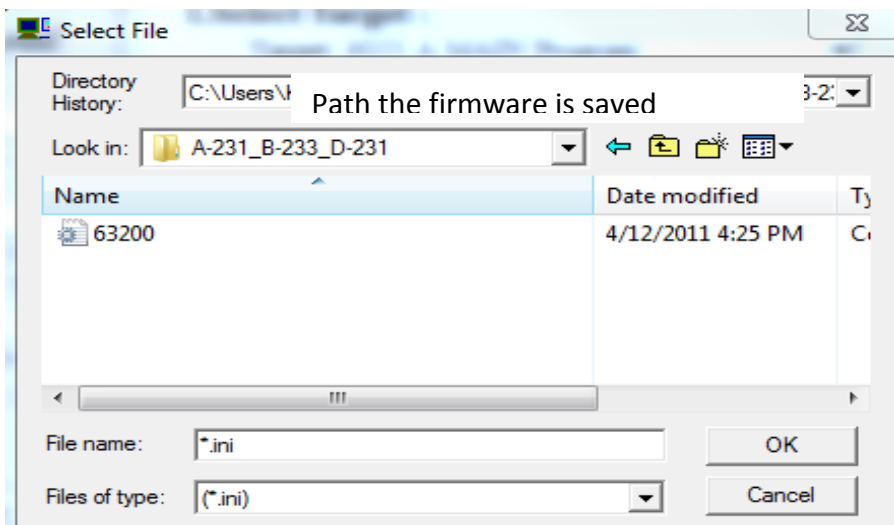
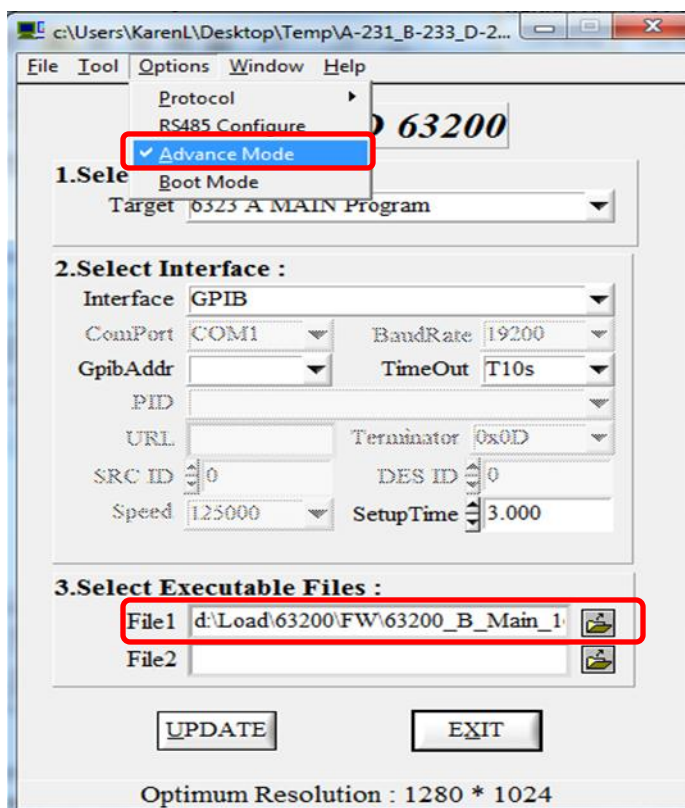


Figure 2 initialize profile

3 Choose Advance Mode under Options. Select the right file to load under” 3. Select Executable Files”



4 Verify the settings and make sure the executable file selected is corresponded to the target program.

5 Click UPDARE.

6 When update is completed, 63200 would run a self-test by itself. Wait until the unit comes on normal then repeat the procedures above to download firmware for other boards.