

Agilent E6607A EXT Wireless Communications Test Set

With U90xxA Measurement Applications
and N76xxB Signal Studio Software

Configuration Guide

The Agilent E6607A EXT wireless communications test set integrates an innovative test sequencer, vector signal analyzer (VSA), vector signal generator (VSG), and multi-port RF input/output hardware, allowing you to accelerate non-signaling test in cellular and wireless device manufacturing all in a single box.

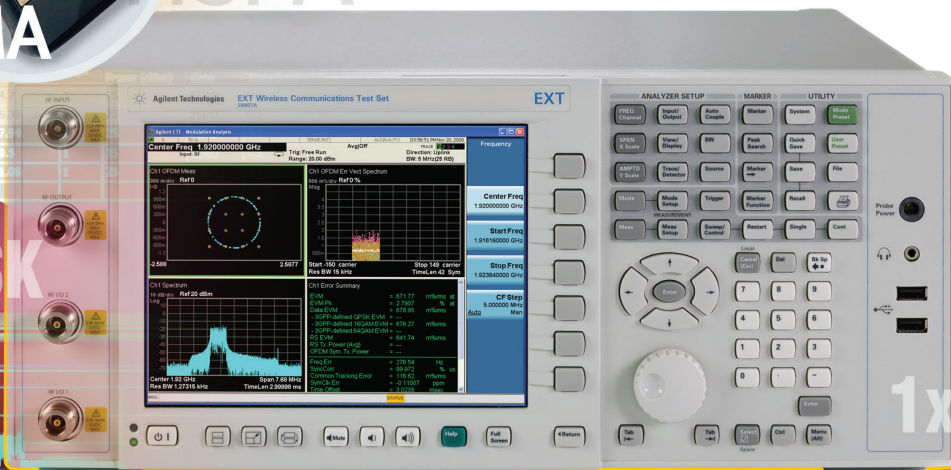
Fast, standards-compliant, measurements and modulation analyses capability are provided by Agilent U90xxA measurement applications, designed specifically for the EXT based on proven measurement algorithms of the Agilent X-Series signal analyzers. Advanced multi-technology signal creation is available using the industry-standard Signal Studio software for base station downlink simulation.



HSPA+

W-CDMA

GSM QPSK



1xEV-DO

RevLink CDP

Ch1 Error Summary			
EVM	=	671.77	m%rms at
EVM Pk	=	2.7907	% at
Data EVM	=	678.95	m%rms
- 3GPP-defined QPSK EVM	=	---	
- 3GPP-defined 16QAM EVM	=	676.27	m%rms
- 3GPP-defined 64QAM EVM	=	---	
RS EVM	=	641.74	m%rms
RS Tx. Power (Avg)	=	---	
OFDM Sym. Tx. Power	=	---	



Agilent Technologies

Anticipate — Accelerate — Achieve

The standard EXT product includes:

- Getting Started Guide (5972-3415) in hardcopy
- U9060A-2FP test set measurement application, fixed perpetual license
- U9065A-2FP dequence analyzer application, fixed perpetual license
- Waveform 5-pack (quantity 2) – E6607A-221 and 222
- Country-specific power cord
- E6607A-PFR precision frequency reference

1. Choose the frequency range (required)

2. Choose the measurement applications and license types (required)

Ordering number	Description
E6607A-503	Frequency range 10 MHz to 3.6 GHz

Fixed perpetual	Transportable perpetual
U9071A GSM/EDGE measurement application	
U9071A-2FP	U9071A-2TP
U9071A EDGE EVO measurement application	
U9071A-3FP	U9071A-3TP
U9072A cdma2000® measurement application	
U9072A-2FP	U9072A-2TP
U9073A W-CDMA measurement application	
U9073A-1FP	U9073A-1TP
U9073A HSDPA/HSUPA measurement application	
U9073A-2FP	U9073A-2TP
U9073A HSPA+ measurement application	
U9073A-3FP	U9073A-3TP
U9075A Mobile WiMAX™ 802.16 OFDMA measurement application	
U9075A-2FP	U9075A-2TP
U9076A 1xEV-DO measurement application	
U9076A-1FP	U9076A-1TP
U9079A TD-SCDMA measurement application	
U9079A-1FP	U9079A-1TP
U9079A HSPA measurement application	
U9079A-2FP	U9079A-2TP
U9080A LTE FDD measurement application	
U9080A-1FP	U9080A-1TP
U9081A Bluetooth® EDR and ULP measurement application	
U9081A-2FP	U9081A-2TP
U9082A LTE TDD measurement application	
U9082A-1FP	U9082A-1TP

3. Choose the N7300 Series chipset software (optional)

The N7300 Series chipset software is optional and can be ordered at time of E6607A purchase or at a later date. For information on the relevant N7300 Series software, refer to www.agilent.com/find/N7300

4. Choose the U9066A Sequence Studio software (optional)

The Agilent U9066A Sequence Studio is a visual software tool that dramatically streamlines test plan development, reducing the engineering time required to develop and troubleshoot non-signaling test plans for volume manufacturing. The U9066A software is optional and can be ordered at the time of E6607A purchase or at a later date. For information on the U9066A Sequence Studio software, refer to www.agilent.com/find/U9066A

Ordering number	Description
U9066A-1TP	Sequence Studio, transportable perpetual license

5. Choose the accessories (optional)

All the accessories are optional.

Ordering number	Description
E6607A-KYB	Keyboard, USB
E6607A-1CR	Rack slide kit
E6607A-1CM	Rackmount kit
E6607A-1CN	Front handle kit
E6607A-1CP	Rackmount and handle kit
E6607A-HTC	Hard transit case
E6607A-MSE	Mouse, USB

6. Choose the Signal Studio software (optional)

Fixed perpetual	Transportable perpetual	Description
N7600B Signal Studio for W-CDMA/HSPA+		
N7600B-8FP	N7600B-8TP	Connect to EXT wireless communications test set
N7600B-EFP	N7600B-ETP	Basic W-CDMA HSPA R7
N7600B-FFP	N7600B-FTP	Basic W-CDMA HSPA+ R8
N7600B-QFP	N7600B-QTP	Advanced W-CDMA/HSPA+ R8 UL, HSDPA R6 DL
N7601B Signal Studio for 3GPP2 CDMA		
N7601B-8FP	N7601B-8TP	Connect to EXT wireless communications test set
N7601B-EFP	N7601B-ETP	Basic cdma2000
N7601B-QFP	N7601B-QTP	Advanced cdma2000
N7601B-FFP	N7601B-FTP	Basic 1xEV-DO
N7601B-RFP	N7601B-RTP	Advanced 1xEV-DO
N7602B Signal Studio for GSM/EDGE/EVO		
N7602B-8FP	N7602B-8TP	Connect to EXT wireless communications test set
N7602B-EFP	N7602B-ETP	Basic GSM/EDGE
N7602B-FFP	N7602B-FTP	Basic EGPRS2
N7602B-QFP	N7602B-QTP	Advanced GSM/EDGE /EGPRS2
N7606B Signal Studio for Bluetooth®		
N7606B-8FP	N7606B-8TP	Connect to EXT wireless communications test set
N7606B-QFP	N7606B-QTP	Advanced Bluetooth V 1.1
N7606B-RFP	N7606B-RTP	Advanced Bluetooth V 2.1+EDR
N7606B-SFP	N7606B-STP	Advanced Bluetooth Low Energy
N7611B Signal Studio for Broadcast Radio		
N7611B-8FP	N7611B-8TP	Connect to EXT wireless communications test set
N7611B-QFP	N7611B-QTP	Advanced FM stereo/RDS
N7611B-RFP	N7611B-RTP	Advanced DAB/DAB+ /DMB
N7611B-SFP	N7611B-SFP	ETI support for DAB/DMB

Continued on page 4

6. Choose the Signal Studio software (optional)

Continued

Fixed perpetual	Transportable perpetual	Description
N7612B Signal Studio for TD-SCDMA/HSDPA		
N7612B-8FP	N7612B-8TP	Connect to EXT wireless communications test set
N7612B-EFP	N7612B-ETP	Basic TD-SCDMA/HSDPA
N7612B-QFP	N7612B-QTP	Advanced TD-SCDMA/HSDPA
N7615B Signal Studio for Mobile WiMAX™		
N7615B-8FP	N7615B-8TP	Connect to EXT wireless communications test set
N7615B-EFP	N7615B-ETP	Basic Mobile WiMAX
N7615B-QFP	N7615B-QTP	Advanced Mobile WiMAX
N7615B-RFP	N7615B-RTP	Advanced Mobile WiMAX 802.16 updates
N7623B Signal Studio for Digital Video		
N7623B-8FP	N7623B-8TP	Connect to EXT wireless communications test set
N7623B-MFP	N7623B-MTP	Advanced ISDB-Tmm, ISDB-T enhancement
N7623B-NFP	N7623B-NTP	Advanced ATSC-M/H
N7623B-PFP	N7623B-PTP	Advanced BER tools
N7623B-QFP	N7623B-QTP	Advanced DVB-T/H/C/J.83 Annex A/C
N7623B-RFP	N7623B-RTP	Advanced ISDB-T
N7623B-SFP	N7623B-STP	Advanced DTMB
N7623B-UFP	N7623B-UTP	Advanced ATSC
N7623B-VFP	N7623B-VTP	Advanced DVB-S
N7623B-WFP	N7623B-WTP	Advanced DVB-S2
N7623B-XFP	N7623B-XTP	Advanced J.83 Annex B, DOCSIS DS
N7623B-YFP	N7623B-YTP	Advanced CMMB
N7623B-ZFP	N7623B-ZTP	Advanced DVB-T2
N7624B Signal Studio for 3GPP LTE FDD		
N7624B-8FP	N7624B-8TP	Connect to EXT wireless communications test set
N7624B-HFP	N7624B-HTP	Basic LTE FDD R9
N7624B-SFP	N7624B-STP	Advanced LTE FDD R9
N7625B Signal Studio for LTE TDD		
N7625B-8FP	N7625B-8TP	Connect to EXT wireless communications test set
N7625B-EFP	N7625B-ETP	Basic LTE TDD R9
N7625B-QFP	N7625B-QTP	Advanced LTE TDD R9

Waveform 5 and 50-packs are a cost-effective solution that lets you configure Agilent Signal Studio waveforms for your applications. All instruments are shipped with the E6607A-221 (Waveform 5-pack1) and E6607A-222 (Waveform 5-pack2) as standard.

7. Waveform 5 and 50-packs (optional)

Ordering number	Description
E6607A-223-229	Waveform license 5-pack 3 to 9
E6607A-250-259	Waveform license 50-pack 1 to 10

If option UK6 is required it must be ordered at time of E6607A purchase.

8. Choose calibration service (optional)

Ordering number	Description
E6607A-UK6	Commercial calibration certificate with test data
R-50C-011-3	3-year calibration assurance plan (return to Agilent)
R-50C-011-5	5-year calibration assurance plan (return to Agilent)

9. Choose a warranty plan (optional)

Ordering number	Description
Included	3-year warranty (return to Agilent), standard
R-51B-001-5F	5-year warranty assurance plan (return to Agilent)

10. Choose services (optional)

Ordering number	Description
PS-S20	Startup assistance
PS-S20-01	Recommended startup assistance
PS-S10	Remote scheduled productivity assistance. Select 1 to 999 hours.
PS-X10	Custom services to be qualified by an Agilent technical consultant

11. Upgrades (optional)

The following upgrade kits are available for the E6607A EXT wireless communications test set.

Ordering number	Description
E6607AK-223-229	Waveform License 5-pack 3 to 9 upgrade
E6607AK-250-259	Waveform License 50-pack 1 to 10 upgrade
E6607AK-KYB	Keyboard, USB
E6607AK-1CR	Rack slide kit
E6607AK-1CM	Rackmount kit
E6607AK-1CN	Front handle kit
E6607AK-1CP	Rackmount and handle kit
E6607AK-HTC	Hard transit case
E6607AK-MSE	Mouse, USB

Related Agilent Literature

The Most Cost-Effective Way to Manufacture Next-Generation Wireless Devices,
Brochure,
Literature number 5990-7156EN

Make the Move to Non-Signaling Test with the EXT,
Flyer,
Literature number 5990-4988EN

E6607A EXT Wireless Communications Test Set,
Data Sheet
5990-5010EN

E6607A EXT Wireless Communications Test Set, Non-Signaling Test Overview,
Application Note,
Literature number 5990-7498EN

Solutions for Manufacturing Next-Generation Wireless Devices,
Application Note,
Literature number 5990-7209EN

The most cost-effective way to manufacture next-generation wireless devices

Power	Modulation	Frequency	Bandwidth	Resolution	Occupied Bandwidth	Spurious	Spurious Mask	Spurious Power	Spurious Power	Spurious Power	Spurious Power	Spurious Power	Spurious Power	Spurious Power	Spurious Power	Spurious Power	Spurious Power	Spurious Power	Spurious Power	Spurious Power
100mW	QPSK	1920MHz	10MHz	100kHz	10MHz	100kHz	100kHz	100kHz	100kHz	100kHz	100kHz	100kHz	100kHz	100kHz	100kHz	100kHz	100kHz	100kHz	100kHz	100kHz



myAgilent

www.agilent.com/find/myagilent

A personalized view into the information most relevant to you.



www.agilent.com/find/ThreeYearWarranty

Beyond product specification, changing the ownership experience. Agilent is the only test and measurement company that offers three-year warranty on all instruments, worldwide.



Agilent Assurance Plans

www.agilent.com/find/AssurancePlans

Five years of protection and no budgetary surprises to ensure your instruments are operating to specifications and you can continually rely on accurate measurements.



www.agilent.com/quality



Agilent Electronic Measurement Group
DEKRA Certified ISO 9001:2008
Quality Management System

E6607A

10 MHz to 3.6 GHz

X-Series measurement applications

Sequence Studio software

Signal Studio software

Chipset software

www.agilent.com/find/E6607A

www.agilent.com/find/EXT



Bluetooth and the Bluetooth logos are trademarks owned by Bluetooth SIG, Inc., U.S.A. and licensed to Agilent Technologies, Inc.
cdma2000 is a registered certification mark of the Telecommunications Industry Association. Used under license.

WiMAX, Mobile WiMAX, WiMAX Forum, the WiMAX Forum logo, WiMAX Forum Certified, and the WiMAX Forum Certified logo are US trademarks of the WiMAX Forum.

www.agilent.com
www.agilent.com/find/E6607A

For more information on Agilent Technologies' products, applications or services, please contact your local Agilent office. The complete list is available at: www.agilent.com/find/contactus

Americas

Canada	(877) 894 4414
Brazil	(11) 4197 3600
Mexico	01800 5064 800
United States	(800) 829 4444

Asia Pacific

Australia	1 800 629 485
China	800 810 0189
Hong Kong	800 938 693
India	1 800 112 929
Japan	0120 (421) 345
Korea	080 769 0800
Malaysia	1 800 888 848
Singapore	1 800 375 8100
Taiwan	0800 047 866
Other AP Countries	(65) 375 8100

Europe & Middle East

Belgium	32 (0) 2 404 93 40
Denmark	45 45 80 12 15
Finland	358 (0) 10 855 2100
France	0825 010 700* *0.125 €/minute
Germany	49 (0) 7031 464 6333
Ireland	1890 924 204
Israel	972-3-9288-504/544
Italy	39 02 92 60 8484
Netherlands	31 (0) 20 547 2111
Spain	34 (91) 631 3300
Sweden	0200-88 22 55
United Kingdom	44 (0) 118 927 6201

For other unlisted countries:

www.agilent.com/find/contactus

(BP-09-27-13)

Product specifications and descriptions in this document subject to change without notice.

© Agilent Technologies, Inc. 2011-2013
Published in USA, November 19, 2013
5990-4987EN



Agilent Technologies