

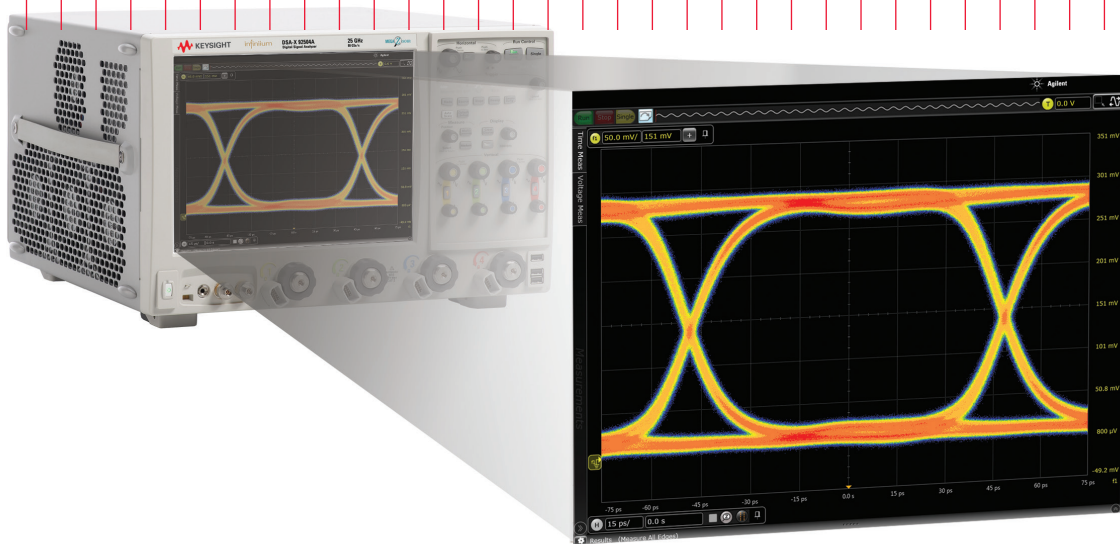
Keysight Technologies

U7249C and U7249D MIPI M-PHY

Conformance Test Software for Infiniium Oscilloscopes

Data Sheet

Validate and debug the electrical performance of your embedded MIPI M-PHYSM data links, including DigRF v4SM, UniProSM, LLISM, UFS, CSI-3, SSIC and M-PCIe protocols quickly and easily





Introduction

The Keysight Technologies, Inc. MIPI M-PHY conformance test software for Infiniium oscilloscopes gives you a fast, easy way to validate and debug your embedded M-PHY data links. The M-PHY electrical test software allows you to automatically execute M-PHY electrical checklist tests for DigRF v4, UniPro, LLI, UFS, CSI-3, SSIC and M-PCIe architectures, and displays the results in a flexible report format. In addition to the measurement data, the report provides margin analysis that shows how closely your product passed or failed each test.

The M-PHY conformance test software performs a wide range of tests required to meet the physical layer requirements per Section 5.1 of the MIPI Alliance Specification for M-PHY v3.1 and M-PHY Conformance Test Suite (CTS) v3.0.

The M-PHY conformance test software helps you execute the most difficult physical layer tests for transmitters (TX tests only) that can be measured with a 6 GHz or higher-bandwidth realtime oscilloscope. Although there are not currently any requirements for physical layer compliance verification, it is highly recommended that every MIPI M-PHY link be tested against the limits of the physical layer specification to ensure that it is compliant to the specification and to minimize concerns with protocol level interoperability.

Features

The M-PHY conformance test software offers several features to simplify design validation:

- Complete support for MIPI Alliance Specification for M-PHY v3.1 and M-PHY CTS v3.0
- User selection of tests and configuration of data rate
- Automated scope measurement setup and programming for increased accuracy, time-savings and repeatability
- Advanced debug modes for troubleshooting
- Automated margin analysis and pass/fail conformance reporting

With the M-PHY conformance test software, you can use the same oscilloscope you use for everyday debugging to perform automated testing and margin analysis based on the MIPI Alliance Specification for M-PHY v3.1 and M-PHY CTS v3.0.

M-PHY app

The M-PHY conformance test software saves you time by setting the stage for automatic execution of required electrical tests. The primary difficulty of performing electrical tests for M-PHY is connecting the oscilloscope to the target device, correctly configuring the scope's measurement system for ultimate accuracy, issuing the proper commands to perform the tests and then analyzing the measured results by comparing them to limits published in the specification. The M-PHY conformance test software automates this work to provide rapid, accurate and repeatable test execution. In addition, if you discover a problem with your product, debug tools in the scope are available to aid in root-cause analysis. See Group 1 and 2 for a complete list of the measurements you can make with the MIPI M-PHY conformance test software.

Easy Test Definition

The M-PHY conformance test software extends the ease-of-use advantages of Keysight's Infiniium oscilloscopes to testing M-PHY designs. The Keysight automated test engine walks you quickly through the steps required to define and configure the tests, execute the tests, and view the test results. You can select a category of tests all at once or specify individual tests. The user interface is oriented to minimize unnecessary reconnections, which saves time and ensures accuracy and repeatability of tests. You can save tests and configurations as project files and recall them later for quick re-testing or review of previous test. Straightforward menus let you perform tests with a minimum of mouse clicks.

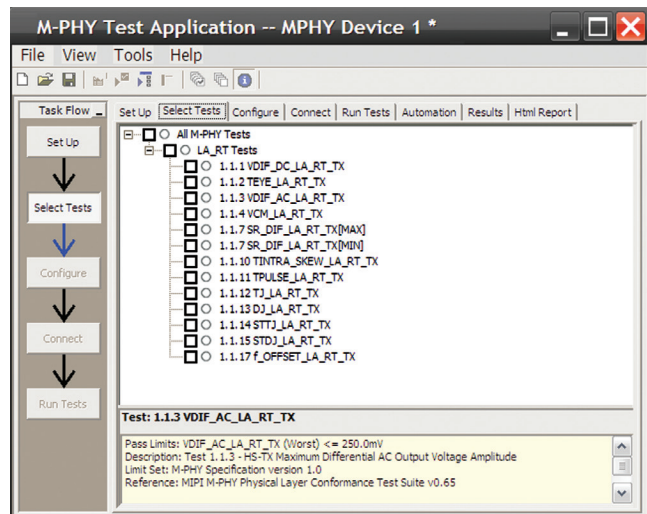


Figure 1. You can easily select individual tests or groups of test with a mouse-click and customize your output report based on the test results you want to see.

Configurability and Guided Connections

The M-PHY conformance test software provides flexibility in your test setup. The M-PHY conformance test software provides you with user-defined controls for critical test parameters such as channel probe configurations, number of measurement observations for tests and the low-power trigger threshold. After you configure the tests to meet your needs, the user interface will present you the connection screen that is specific to the configuration data you have selected. This includes the oscilloscope channels used for the test and the routing of any necessary probing needed to perform the tests. In some cases, a configuration change may be necessary to properly make a new set of measurements. Guided configuration diagrams will be presented when each change is needed to ensure proper configuration for the tests. The software is designed to minimize connection changes to increase the efficiency of test operation and save you time.

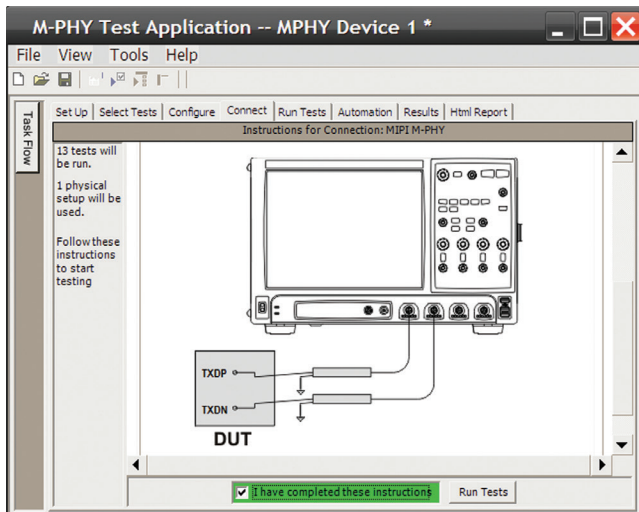


Figure 2. Guided configuration diagrams provide you with channel and probe configurations needed to properly connect to your product and accurately perform tests.

Results Reports with Margin Analysis

In addition to providing you with measurement results, the M-PHY test software provides a report format that shows you not only where your product passes or fails, but also reports how close you are to the limits specified for a particular test assertion. You select the margin test report parameter, which means you can specify the level at which warnings are issued to alert you to the electrical tests where your product is operating close to the official test limit defined by the specification for a given test assertion.

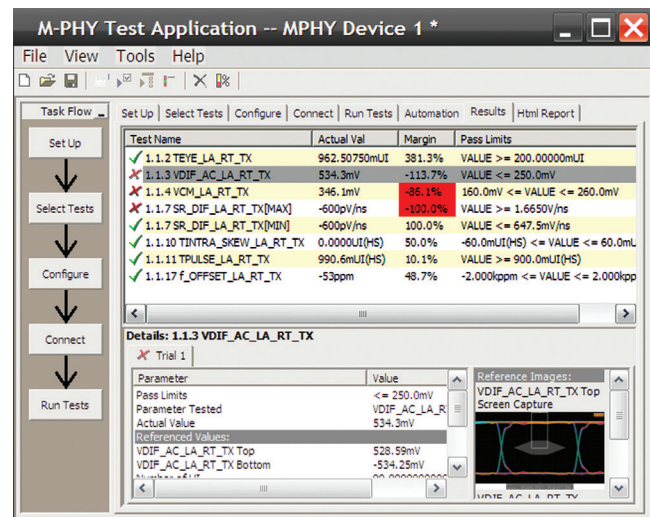


Figure 3. Results reports quickly highlight test margins versus specified limits and a summary of measurements that pass/fail or violate the margin warnings you have set.

Configurability and Guided Connections

The M-PHY conformance software generates thorough reports that not only capture the performance and status of the device under test, but capture the screen shots of your most significant measurements for your documentation and evaluation.

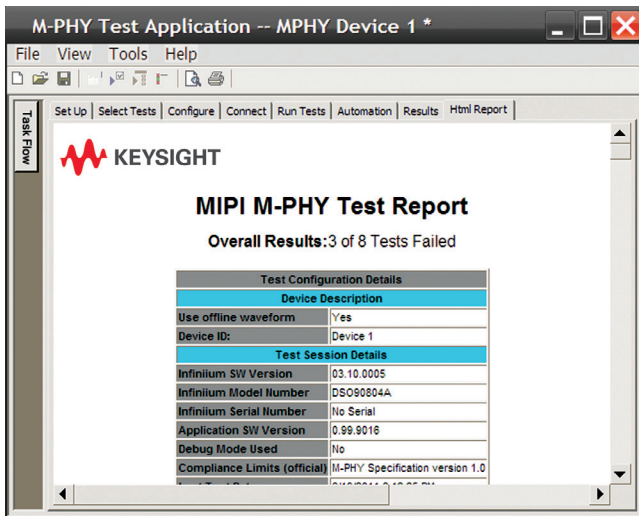


Figure 4. A complete HTML-formatted report provides a results summary for documentation and archiving with full detail on measurement definitions referenced to the specification and screen images from the oscilloscope during test.

Measurement Requirements

To use the M-PHY conformance software you will need a Keysight Infiniium Series oscilloscope with at least 6 GHz of analog, real-time bandwidth. In order to use the M-PHY conformance test software, your product will need to be able to source the necessary high-speed mode (HS-MODE) and low-speed mode (LS-MODE) in the supported GEAR and RATE. Besides that, your product has to be able to transmit the required Conformance Random Pattern (CRPAT) in HS and PWM modes as well as continuous and burst signaling to perform the testing according to the CTS v3.0 requirements.

Extensibility

You may add additional custom tests or steps to your application using the N5467B/C User Defined Application (UDA) development tool (www.keysight.com/find/uda). Use UDA to develop functional “Add-Ins” that you can plug into your application.

Add-ins may be designed as:

- Complete custom tests (with configuration variables and connection prompts)
- Any custom steps such as pre or post processing scripts, external instrument control and your own device control

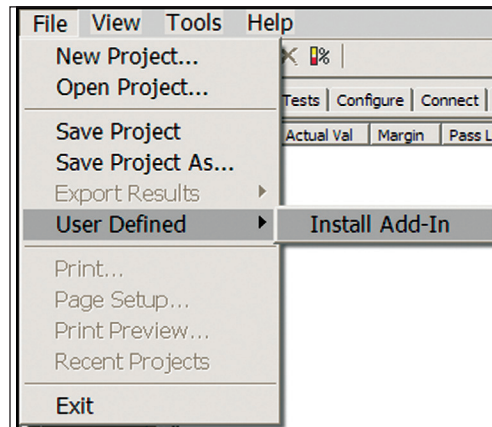


Figure 5. Importing a UDA Add-In into your test application.

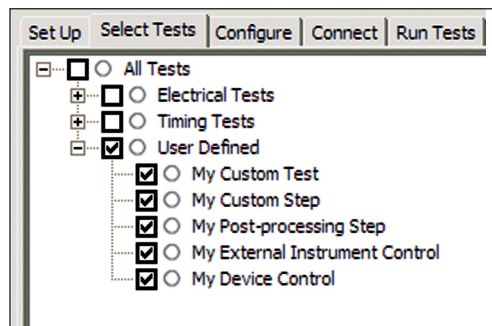


Figure 6. UDA Add-In tests and utilities in your test application.

Automation

You can completely automate execution of your application's tests and Add-Ins from a separate PC using the included N5452A Remote Interface feature (download free toolkit from www.keysight.com/find/scope-apps-sw). You can even create and execute automation scripts right inside the application using a convenient built-in client.

The commands required for each task may be created using a command wizard or from "remote hints" accessible throughout the user interface.

Using automation, you can accelerate complex testing scenarios and even automate manual tasks such as:

- Opening projects, executing tests and saving results
- Executing tests repeatedly while changing configurations
- Sending commands to external instruments
- Executing tests out of order

Combine the power of built-in automation and extensibility to transform your application into a complete test suite executive:

- Interact with your device controller to place it into desired states or test modes before test execution.
- Configure additional instruments used in your test suite such as a pattern generator and probe switch matrix.
- Export data generated by your tests and post-process it using your favorite environment, such as MATLAB, Python, LabVIEW, C, C++, Visual Basic etc.
- Sequence or repeat the tests and "Add-In" custom steps execution in any order for complete test coverage of the test plan.

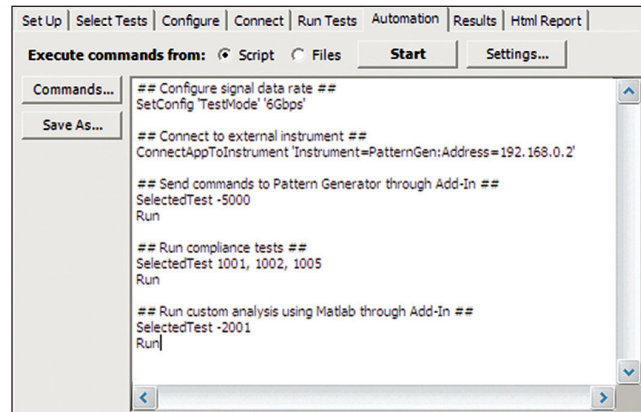


Figure 7. Remote Programming script in the Automation tab.

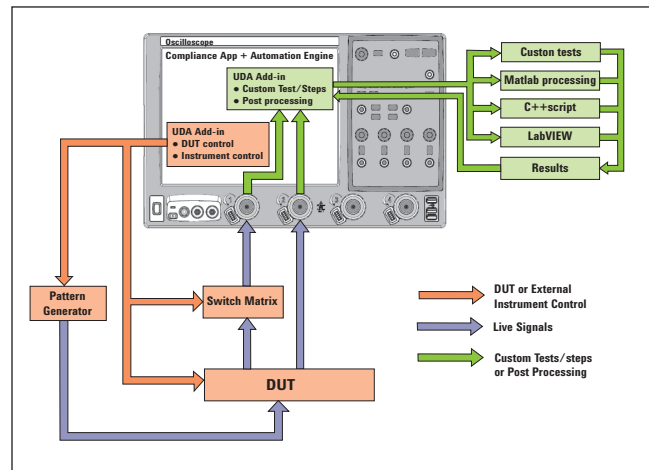


Figure 8. Combine the power of built-in automation and extensibility to transform your application into a complete test suite executive.

Switch Matrix

The Keysight switch matrix software option for the conformance application, used together with switch matrix hardware, enables fully automated testing for multi-lane digital bus interfaces. The benefits of this automated switching solution include:

- Eliminate reconnections, which saves time and reduces errors through automating test setup for each lane of a multi-lane bus.
- Maintain accuracy with the use of unique PrecisionProbe or InfiniiSim features to compensate for switch path losses and skew.
- Customize testing by using remote programming interface and the UDA tool for device control, instrument control and test customization.

More information of the switching solution and configuration, visit www.keysight.com/find/switching and the Keysight application note with the publication number 5991-2375EN.



Figure 9. Automated testing for multi-lane digital bus interface through switching solution

Test Performed

The M-PHY conformance software performs the following tests as per MIPI Alliance Specification for M-PHY v3.1 and M-PHY CTS v3.1.

Group 1: HS-TX tests	Group 2: PWM-TX tests
1.1.1 f_OFFSET	1.2.1 TPWM
1.1.2 PSDCM	1.2.2 kPWM
1.1.3 PREPARE_Length	1.2.3 TPWM_PREPARE
1.1.4 VCM	1.2.4 VCM
1.1.5 VDIF_DC	1.2.5 VDIF_DC
1.1.6 TEYE_TX	1.2.6 TEYE_TX
1.1.7 VDIF_AC	1.2.7 VDIF_AC
1.1.8 TR_TF_HS	1.2.8 TR_TF_PWM
1.1.9 L2L_SKEW	1.2.9 L2L_SKEW_PWM
1.1.10 SR_DIF[MAX]	1.2.10 TOL_PWM
1.1.10 SR_DIF[MIN]	1.2.10 TOL_PWM_G1
1.1.11 SR_DIF Monotonicity	1.2.11 TPWM_MINOR_GO
1.1.12 ΔSR_DIF Resolution	
1.1.13 TINTRA_SKEW	
1.1.14 TPULSE	
1.1.15 TJ	
1.1.16 STTJ	
1.1.17 DJ	
1.1.18 STDJ	

Recommended Oscilloscopes

The M-PHY conformance software is compatible with Keysight Infiniium Series oscilloscopes with operating software revision 4.20 or higher. For oscilloscopes with earlier revisions, free upgrade software is available at: www.keysight.com/find/scope-apps-sw.

Data rate	Minimum bandwidth	Minimum channels	Compatible oscilloscopes
Gear 1 (up to 1.46 Gbps)	6 GHz	2	Infiniium 9000, S-Series, 90000 and Z-Series
Gear 2 (up to 2.92 Gbps)	12 GHz	2	Infiniium 90000 and Z-Series
Gear 3 (up to 5.83 Gbps)	20 GHz	2	Infiniium 90000 and Z-Series

Ordering Information

To purchase the M-PHY software with a new or existing Infiniium Series oscilloscope, order the following options.

Software options

Application	License type		Infiniium Z-Series	Infiniium S-Series	Infiniium 90000 Series	Infiniium 9000 Series
M-PHY conformance software	Fixed	Factory-installed	U7249C-1FP	U7249D-1FP	Option 047	—
		User-installed	U7249C-1FP	U7249D-1FP	U7249C-1NL	U7249D-1NL
	Floating	Transportable	U7249C-1TP	U7249D-1TP	U7249C-1TP ^{1,2}	U7249D-1TP ^{1,2}
		Server-based	N5435A-043	N5435A-043	N5435A-043	N5435A-043
M-PHY switch matrix support (optional) ³	Fixed	Factory-installed	U7249C-7FP	U7249D-7FP	Option 704	—
		User-installed	U7249C-7FP	U7249D-7FP	U7249C-7NL	U7249D-7NL
	Floating	Transportable	U7249C-7TP	U7249D-7TP	U7249C-7TP ^{1,2}	U7249D-7TP ^{1,2}
		Server-based	N5435A-704	N5435A-704	N5435A-704	N5435A-704
Serial data analysis with clock recovery (included in DSA model)	Fixed	Factory-installed	E2688A-1FP	N5384A-1FP	Option 003	Option 003
		User-installed	E2688A-1FP	N5384A-1FP	E2688A-1NL	N5384A-1NL
	Floating	Transportable	E2688A-1TP	N5384A-1TP	E2688A-1TP ^{1,2}	N5384A-1TP ^{1,2}
		Server-based	N5435A-003	N5435A-003	N5435A-003	N5435A-003
EZJIT Plus jitter analysis (included in DSA model)	Fixed	Factory-installed	N5400A-1FP	N5400B-1FP	Option 004	Option 004
		User-installed	N5400A-1FP	N5400B-1FP	N5400A-1NL	N5400B-1NL
	Floating	Transportable	N5400A-1TP	N5400B-1TP	N5400A-1TP ^{1,2}	N5400B-1TP ^{1,2}
		Server-based	N5435A-001	N5435A-001	N5435A-001	N5435A-001
PrecisionProbe (optional)	Fixed	Factory-installed	N2809A-1FP	N2808A-1FP	Option 001	—
		User-installed	N2809A-1FP	N2808A-1FP	N2809A-1NL	N2808A-1NL
	Floating	Transportable	N2809A-1TP	N2808A-1TP	N2809A-1TP ^{1,2}	N2808A-1TP ^{1,2}
		Server-based	N5435A-044	N5435A-044	N5435A-044	N5435A-044

1. Requires software 5.00 and above.

2. Software 4.30 or above requires Windows 7. N2753A Infiniium Windows XP to 7 OS upgrade kit (oscilloscope already has M890 motherboard). N2754A Infiniium Windows XP to 7 OS and M890 motherboard upgrade kit (oscilloscope without M890 motherboard). Verify the M890 motherboard using the procedure found in the Windows 7 upgrade kit data sheet with the publication number 5990-8569EN.

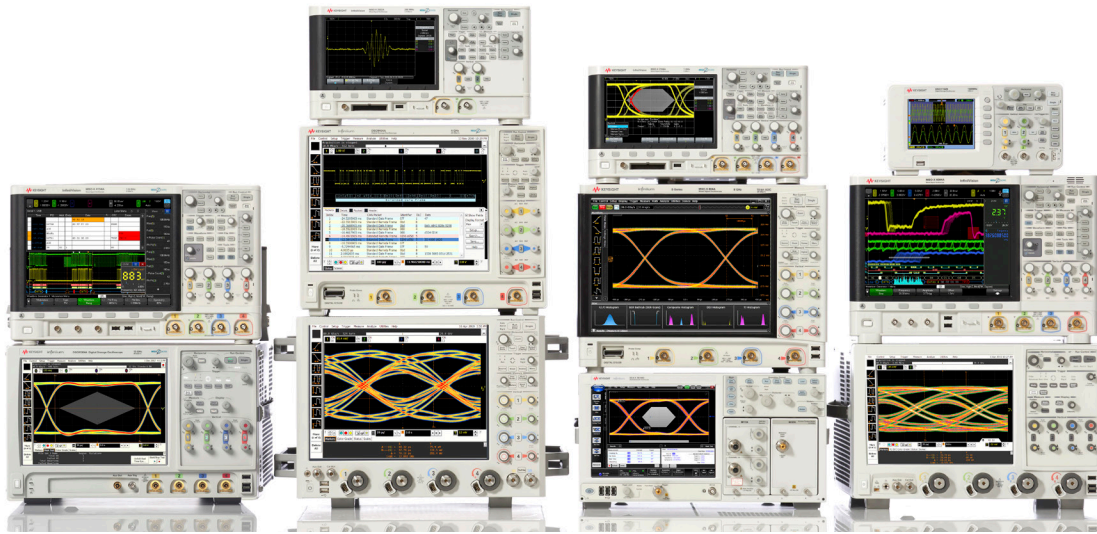
3. For full switch configuration, refer to www.keysight.com/find/switching or the brochure Automated Switching Solution for Oscilloscopes with the publication number 5991-2413EN.

Other hardware, probes and accessories

Model number	Description	Quantity
1169A	InfiniiMax II 12-GHz differential probe amplifier	2
N5380B	InfiniiMax II SMA probe adapter	2
E2669A	Differential probe connectivity kit (contains needed probe heads)	1
M-PHY test load (optional)	MIPI M-PHY test load from UNH-IOL https://www.iol.unh.edu/services/testing/mipi/fixtures.php	1

Related Literature

Publication title	Publication type	Publication number
<i>Infiniium DSO/DSA 90000A Series Oscilloscopes</i>	Data sheet	5989-7819EN
<i>E2688A High-Speed Serial Data Analysis</i>	Data sheet	5989-0108EN
<i>N5400A EZJIT Plus Jitter Analysis Software</i>	Data sheet	5989-0109EN
<i>Infiniium DSO/MSO9000A Series Oscilloscopes</i>	Data sheet	5990-3746EN
<i>Infiniium 90000 X-Series Oscilloscopes</i>	Data sheet	5990-5271EN
<i>Infiniium 90000 Q-Series Oscilloscopes</i>	Data sheet	5990-9712EN
<i>Infiniium Z-Series Oscilloscopes</i>	Data sheet	5991-3868EN
<i>PrecisionProbe for Bandwidths up to 33 GHz</i>	Data sheet	5990-7940EN



Keysight Technologies Oscilloscopes

Multiple form factors from 20 MHz to > 90 GHz | Industry leading specs | Powerful applications

myKeysight

myKeysight

www.keysight.com/find/mykeysight

A personalized view into the information most relevant to you.



www.axiestandard.org

AdvancedTCA® Extensions for Instrumentation and Test (AXIe) is an open standard that extends the AdvancedTCA for general purpose and semiconductor test. Keysight is a founding member of the AXIe consortium. ATCA®, AdvancedTCA®, and the ATCA logo are registered US trademarks of the PCI Industrial Computer Manufacturers Group.



www.lxistandard.org

LAN eXtensions for Instruments puts the power of Ethernet and the Web inside your test systems. Keysight is a founding member of the LXI consortium.



www.pxisa.org

PCI eXtensions for Instrumentation (PXI) modular instrumentation delivers a rugged, PC-based high-performance measurement and automation system.



Three-Year Warranty

www.keysight.com/find/ThreeYearWarranty

Keysight's commitment to superior product quality and lower total cost of ownership. The only test and measurement company with three-year warranty standard on all instruments, worldwide.



Keysight Assurance Plans

www.keysight.com/find/AssurancePlans

Up to five years of protection and no budgetary surprises to ensure your instruments are operating to specification so you can rely on accurate measurements.



www.keysight.com/quality

Keysight Technologies, Inc.
DEKRA Certified ISO 9001:2008
Quality Management System

Keysight Channel Partners

www.keysight.com/find/channelpartners

Get the best of both worlds: Keysight's measurement expertise and product breadth, combined with channel partner convenience.

For more information on Keysight Technologies' products, applications or services, please contact your local Keysight office. The complete list is available at: www.keysight.com/find/contactus

Americas

Canada	(877) 894 4414
Brazil	55 11 3351 7010
Mexico	001 800 254 2440
United States	(800) 829 4444

Asia Pacific

Australia	1 800 629 485
China	800 810 0189
Hong Kong	800 938 693
India	1 800 112 929
Japan	0120 (421) 345
Korea	080 769 0800
Malaysia	1 800 888 848
Singapore	1 800 375 8100
Taiwan	0800 047 866
Other AP Countries	(65) 6375 8100

Europe & Middle East

Austria	0800 001122
Belgium	0800 58580
Finland	0800 523252
France	0805 980333
Germany	0800 6270999
Ireland	1800 832700
Israel	1 809 343051
Italy	800 599100
Luxembourg	+32 800 58580
Netherlands	0800 0233200
Russia	8800 5009286
Spain	0800 000154
Sweden	0200 882255
Switzerland	0800 805353
	Opt. 1 (DE)
	Opt. 2 (FR)
	Opt. 3 (IT)
United Kingdom	0800 0260637

For other unlisted countries:
www.keysight.com/find/contactus
(BP-07-10-14)