

**Component-Level Information Packet
for 08712-60042**

CPU



Agilent Technologies

**Part No. 08712-90098
Printed in USA September 1997**

Notice. The information contained in this document is subject to change without notice.

Hewlett-Packard makes no warranty of any kind with regard to this material, including, but not limited to, the implied warranties of merchantability and fitness for a particular purpose. Hewlett-Packard shall not be liable for errors contained herein or for incidental or consequential damages in connection with the furnishing, performance, or use of this material.

**HP Part Number 08712-60042
CPU**

| Reference Designator | HP Part Number | Qty | Description | Mfr Code | Mfr Part Number |
|----------------------|----------------|-----|---------------------------------------|----------|-----------------|
| BT301 | 1420-0338 | 1 | BATTERY 3V 1.2A-HR LITHIUM POLYCARBON | 28480 | 1420-0338 |
| C101 | 0180-4287 | 1 | CAP-FXD 10uF +-20% 35 V TA | 28480 | 0180-4287 |
| C102 | 0160-7798 | 1 | CAP-FXD 0.1uF +-10% 50 V CER X7R | 28480 | 0160-7798 |
| C103 | 0160-7798 | 1 | CAP-FXD 0.1uF +-10% 50 V CER X7R | 28480 | 0160-7798 |
| C105 | 0160-7798 | 1 | CAP-FXD 0.1uF +-10% 50 V CER X7R | 28480 | 0160-7798 |
| C108 | 0160-7798 | 1 | CAP-FXD 0.1uF +-10% 50 V CER X7R | 28480 | 0160-7798 |
| C110 | 0160-7798 | 1 | CAP-FXD 0.1uF +-10% 50 V CER X7R | 28480 | 0160-7798 |
| C111 | 0160-7798 | 1 | CAP-FXD 0.1uF +-10% 50 V CER X7R | 28480 | 0160-7798 |
| C114 | 0180-4287 | 1 | CAP-FXD 10uF +-20% 35 V TA | 28480 | 0180-4287 |
| C115 | 0160-7798 | 1 | CAP-FXD 0.1uF +-10% 50 V CER X7R | 28480 | 0160-7798 |
| C116 | 0160-7798 | 1 | CAP-FXD 0.1uF +-10% 50 V CER X7R | 28480 | 0160-7798 |
| C117 | 0160-7798 | 1 | CAP-FXD 0.1uF +-10% 50 V CER X7R | 28480 | 0160-7798 |
| C118 | 0160-7798 | 1 | CAP-FXD 0.1uF +-10% 50 V CER X7R | 28480 | 0160-7798 |
| C119 | 0160-7798 | 1 | CAP-FXD 0.1uF +-10% 50 V CER X7R | 28480 | 0160-7798 |
| C120 | 0160-7798 | 1 | CAP-FXD 0.1uF +-10% 50 V CER X7R | 28480 | 0160-7798 |
| C123 | 0180-4287 | 1 | CAP-FXD 10uF +-20% 35 V TA | 28480 | 0180-4287 |
| C124 | 0160-7798 | 1 | CAP-FXD 0.1uF +-10% 50 V CER X7R | 28480 | 0160-7798 |
| C125 | 0160-7798 | 1 | CAP-FXD 0.1uF +-10% 50 V CER X7R | 28480 | 0160-7798 |
| C126 | 0160-7798 | 1 | CAP-FXD 0.1uF +-10% 50 V CER X7R | 28480 | 0160-7798 |
| C127 | 0160-7798 | 1 | CAP-FXD 0.1uF +-10% 50 V CER X7R | 28480 | 0160-7798 |
| C128 | 0160-7798 | 1 | CAP-FXD 0.1uF +-10% 50 V CER X7R | 28480 | 0160-7798 |
| C129 | 0160-7798 | 1 | CAP-FXD 0.1uF +-10% 50 V CER X7R | 28480 | 0160-7798 |
| C130 | 0160-7798 | 1 | CAP-FXD 0.1uF +-10% 50 V CER X7R | 28480 | 0160-7798 |
| C131 | 0160-7798 | 1 | CAP-FXD 0.1uF +-10% 50 V CER X7R | 28480 | 0160-7798 |
| C132 | 0160-7798 | 1 | CAP-FXD 0.1uF +-10% 50 V CER X7R | 28480 | 0160-7798 |
| C133 | 0160-7798 | 1 | CAP-FXD 0.1uF +-10% 50 V CER X7R | 28480 | 0160-7798 |
| C134 | 0160-7798 | 1 | CAP-FXD 0.1uF +-10% 50 V CER X7R | 28480 | 0160-7798 |
| C135 | 0160-7798 | 1 | CAP-FXD 0.1uF +-10% 50 V CER X7R | 28480 | 0160-7798 |
| C136 | 0160-7798 | 1 | CAP-FXD 0.1uF +-10% 50 V CER X7R | 28480 | 0160-7798 |
| C138 | 0160-7798 | 1 | CAP-FXD 0.1uF +-10% 50 V CER X7R | 28480 | 0160-7798 |
| C139 | 0160-7798 | 1 | CAP-FXD 0.1uF +-10% 50 V CER X7R | 28480 | 0160-7798 |
| C141 | 0160-7798 | 1 | CAP-FXD 0.1uF +-10% 50 V CER X7R | 28480 | 0160-7798 |
| C142 | 0160-7798 | 1 | CAP-FXD 0.1uF +-10% 50 V CER X7R | 28480 | 0160-7798 |
| C143 | 0160-7798 | 1 | CAP-FXD 0.1uF +-10% 50 V CER X7R | 28480 | 0160-7798 |
| C145 | 0160-7798 | 1 | CAP-FXD 0.1uF +-10% 50 V CER X7R | 28480 | 0160-7798 |

**Indicates factory-selected value*

HP Part Number 08712-60042
CPU (continued)

| Reference Designator | HP Part Number | Qty | Description | Mfr Code | Mfr Part Number |
|----------------------|----------------|-----|----------------------------------|----------|-----------------|
| C146 | 0160-7798 | 1 | CAP-FXD 0.1uF +-10% 50 V CER X7R | 28480 | 0160-7798 |
| C147 | 0160-7798 | 1 | CAP-FXD 0.1uF +-10% 50 V CER X7R | 28480 | 0160-7798 |
| C148 | 0160-7798 | 1 | CAP-FXD 0.1uF +-10% 50 V CER X7R | 28480 | 0160-7798 |
| C149 | 0160-7798 | 1 | CAP-FXD 0.1uF +-10% 50 V CER X7R | 28480 | 0160-7798 |
| C150 | 0160-7798 | 1 | CAP-FXD 0.1uF +-10% 50 V CER X7R | 28480 | 0160-7798 |
| C153 | 0160-7798 | 1 | CAP-FXD 0.1uF +-10% 50 V CER X7R | 28480 | 0160-7798 |
| C201 | 0160-7798 | 1 | CAP-FXD 0.1uF +-10% 50 V CER X7R | 28480 | 0160-7798 |
| C202 | 0160-7798 | 1 | CAP-FXD 0.1uF +-10% 50 V CER X7R | 28480 | 0160-7798 |
| C203 | 0160-7798 | 1 | CAP-FXD 0.1uF +-10% 50 V CER X7R | 28480 | 0160-7798 |
| C204 | 0160-7798 | 1 | CAP-FXD 0.1uF +-10% 50 V CER X7R | 28480 | 0160-7798 |
| C205 | 0160-7798 | 1 | CAP-FXD 0.1uF +-10% 50 V CER X7R | 28480 | 0160-7798 |
| C208 | 0160-7798 | 1 | CAP-FXD 0.1uF +-10% 50 V CER X7R | 28480 | 0160-7798 |
| C209 | 0160-7798 | 1 | CAP-FXD 0.1uF +-10% 50 V CER X7R | 28480 | 0160-7798 |
| C210 | 0160-7798 | 1 | CAP-FXD 0.1uF +-10% 50 V CER X7R | 28480 | 0160-7798 |
| C215 | 0160-7798 | 1 | CAP-FXD 0.1uF +-10% 50 V CER X7R | 28480 | 0160-7798 |
| C218 | 0160-7798 | 1 | CAP-FXD 0.1uF +-10% 50 V CER X7R | 28480 | 0160-7798 |
| C219 | 0160-7798 | 1 | CAP-FXD 0.1uF +-10% 50 V CER X7R | 28480 | 0160-7798 |
| C222 | 0160-7798 | 1 | CAP-FXD 0.1uF +-10% 50 V CER X7R | 28480 | 0160-7798 |
| C223 | 0160-7798 | 1 | CAP-FXD 0.1uF +-10% 50 V CER X7R | 28480 | 0160-7798 |
| C224 | 0160-7798 | 1 | CAP-FXD 0.1uF +-10% 50 V CER X7R | 28480 | 0160-7798 |
| C225 | 0160-7988 | 1 | CAP-FXD 470pF +-5% 50 V CER C0G | 28480 | 0160-7988 |
| C228 | 0160-7798 | 1 | CAP-FXD 0.1uF +-10% 50 V CER X7R | 28480 | 0160-7798 |
| C229 | 0180-4287 | 1 | CAP-FXD 10uF +-20% 35 V TA | 28480 | 0180-4287 |
| C230 | 0160-7798 | 1 | CAP-FXD 0.1uF +-10% 50 V CER X7R | 28480 | 0160-7798 |
| C231 | 0180-4287 | 1 | CAP-FXD 10uF +-20% 35 V TA | 28480 | 0180-4287 |
| C232 | 0160-7798 | 1 | CAP-FXD 0.1uF +-10% 50 V CER X7R | 28480 | 0160-7798 |
| C233 | 0180-4287 | 1 | CAP-FXD 10uF +-20% 35 V TA | 28480 | 0180-4287 |
| C234 | 0160-7798 | 1 | CAP-FXD 0.1uF +-10% 50 V CER X7R | 28480 | 0160-7798 |
| C235 | 0180-4287 | 1 | CAP-FXD 10uF +-20% 35 V TA | 28480 | 0180-4287 |
| C236 | 0160-7798 | 1 | CAP-FXD 0.1uF +-10% 50 V CER X7R | 28480 | 0160-7798 |
| C237 | 0180-4287 | 1 | CAP-FXD 10uF +-20% 35 V TA | 28480 | 0180-4287 |
| C238 | 0160-7798 | 1 | CAP-FXD 0.1uF +-10% 50 V CER X7R | 28480 | 0160-7798 |
| C239 | 0160-7798 | 1 | CAP-FXD 0.1uF +-10% 50 V CER X7R | 28480 | 0160-7798 |
| C240 | 0180-4287 | 1 | CAP-FXD 10uF +-20% 35 V TA | 28480 | 0180-4287 |
| C241 | 0160-7798 | 1 | CAP-FXD 0.1uF +-10% 50 V CER X7R | 28480 | 0160-7798 |

**HP Part Number 08712-60042
CPU (continued)**

| Reference Designator | HP Part Number | Qty | Description | Mfr Code | Mfr Part Number |
|----------------------|----------------|-----|---------------------------------|----------|-----------------|
| C242 | 0160-7798 | 1 | CAP-FXD 0.1uF +10% 50 V CER X7R | 28480 | 0160-7798 |
| C243 | 0180-4287 | 1 | CAP-FXD 10uF +20% 35 V TA | 28480 | 0180-4287 |
| C244 | 0160-7798 | 1 | CAP-FXD 0.1uF +10% 50 V CER X7R | 28480 | 0160-7798 |
| C245 | 0160-7798 | 1 | CAP-FXD 0.1uF +10% 50 V CER X7R | 28480 | 0160-7798 |
| C246 | 0180-4287 | 1 | CAP-FXD 10uF +20% 35 V TA | 28480 | 0180-4287 |
| C247 | 0160-7798 | 1 | CAP-FXD 0.1uF +10% 50 V CER X7R | 28480 | 0160-7798 |
| C301 | 0160-7798 | 1 | CAP-FXD 0.1uF +10% 50 V CER X7R | 28480 | 0160-7798 |
| C302 | 0180-4287 | 1 | CAP-FXD 10uF +20% 35 V TA | 28480 | 0180-4287 |
| C303 | 0160-7798 | 1 | CAP-FXD 0.1uF +10% 50 V CER X7R | 28480 | 0160-7798 |
| C304 | 0160-7798 | 1 | CAP-FXD 0.1uF +10% 50 V CER X7R | 28480 | 0160-7798 |
| C305 | 0160-7798 | 1 | CAP-FXD 0.1uF +10% 50 V CER X7R | 28480 | 0160-7798 |
| C306 | 0160-7798 | 1 | CAP-FXD 0.1uF +10% 50 V CER X7R | 28480 | 0160-7798 |
| C307 | 0160-7798 | 1 | CAP-FXD 0.1uF +10% 50 V CER X7R | 28480 | 0160-7798 |
| C308 | 0160-7798 | 1 | CAP-FXD 0.1uF +10% 50 V CER X7R | 28480 | 0160-7798 |
| C309 | 0160-7798 | 1 | CAP-FXD 0.1uF +10% 50 V CER X7R | 28480 | 0160-7798 |
| C310 | 0160-7798 | 1 | CAP-FXD 0.1uF +10% 50 V CER X7R | 28480 | 0160-7798 |
| C311 | 0160-7798 | 1 | CAP-FXD 0.1uF +10% 50 V CER X7R | 28480 | 0160-7798 |
| C312 | 0160-7798 | 1 | CAP-FXD 0.1uF +10% 50 V CER X7R | 28480 | 0160-7798 |
| C313 | 0160-7798 | 1 | CAP-FXD 0.1uF +10% 50 V CER X7R | 28480 | 0160-7798 |
| C335 | 0180-3751 | 1 | CAP-FXD 1uF +20% 35 V TA | 28480 | 0180-3751 |
| C336 | 0160-7798 | 1 | CAP-FXD 0.1uF +10% 50 V CER X7R | 28480 | 0160-7798 |
| C337 | 0160-7798 | 1 | CAP-FXD 0.1uF +10% 50 V CER X7R | 28480 | 0160-7798 |
| C338 | 0160-7798 | 1 | CAP-FXD 0.1uF +10% 50 V CER X7R | 28480 | 0160-7798 |
| C339 | 0180-4287 | 1 | CAP-FXD 10uF +20% 35 V TA | 28480 | 0180-4287 |
| C341 | 0160-7798 | 1 | CAP-FXD 0.1uF +10% 50 V CER X7R | 28480 | 0160-7798 |
| C342 | 0160-7798 | 1 | CAP-FXD 0.1uF +10% 50 V CER X7R | 28480 | 0160-7798 |
| C343 | 0160-7798 | 1 | CAP-FXD 0.1uF +10% 50 V CER X7R | 28480 | 0160-7798 |
| C345 | 0160-7798 | 1 | CAP-FXD 0.1uF +10% 50 V CER X7R | 28480 | 0160-7798 |
| C346 | 0160-7798 | 1 | CAP-FXD 0.1uF +10% 50 V CER X7R | 28480 | 0160-7798 |
| C349 | 0160-7798 | 1 | CAP-FXD 0.1uF +10% 50 V CER X7R | 28480 | 0160-7798 |
| C350 | 0160-7798 | 1 | CAP-FXD 0.1uF +10% 50 V CER X7R | 28480 | 0160-7798 |
| C351 | 0160-7798 | 1 | CAP-FXD 0.1uF +10% 50 V CER X7R | 28480 | 0160-7798 |
| C352 | 0180-3751 | 1 | CAP-FXD 1uF +20% 35 V TA | 28480 | 0180-3751 |
| C401 | 0160-7798 | 1 | CAP-FXD 0.1uF +10% 50 V CER X7R | 28480 | 0160-7798 |
| C402 | 0160-7798 | 1 | CAP-FXD 0.1uF +10% 50 V CER X7R | 28480 | 0160-7798 |

**Indicates factory-selected value*

HP Part Number 08712-60042
CPU (continued)

| Reference Designator | HP Part Number | Qty | Description | Mfr Code | Mfr Part Number |
|----------------------|----------------|-----|----------------------------------|----------|-----------------|
| C403 | 0160-7798 | 1 | CAP-FXD 0.1uF +-10% 50 V CER X7R | 28480 | 0160-7798 |
| C405 | 0160-7798 | 1 | CAP-FXD 0.1uF +-10% 50 V CER X7R | 28480 | 0160-7798 |
| C406 | 0160-7798 | 1 | CAP-FXD 0.1uF +-10% 50 V CER X7R | 28480 | 0160-7798 |
| C407 | 0160-7798 | 1 | CAP-FXD 0.1uF +-10% 50 V CER X7R | 28480 | 0160-7798 |
| C408 | 0160-7798 | 1 | CAP-FXD 0.1uF +-10% 50 V CER X7R | 28480 | 0160-7798 |
| C409 | 0160-7798 | 1 | CAP-FXD 0.1uF +-10% 50 V CER X7R | 28480 | 0160-7798 |
| C412 | 0160-7798 | 1 | CAP-FXD 0.1uF +-10% 50 V CER X7R | 28480 | 0160-7798 |
| C413 | 0160-7798 | 1 | CAP-FXD 0.1uF +-10% 50 V CER X7R | 28480 | 0160-7798 |
| C414 | 0160-7798 | 1 | CAP-FXD 0.1uF +-10% 50 V CER X7R | 28480 | 0160-7798 |
| C415 | 0160-7798 | 1 | CAP-FXD 0.1uF +-10% 50 V CER X7R | 28480 | 0160-7798 |
| C416 | 0160-7798 | 1 | CAP-FXD 0.1uF +-10% 50 V CER X7R | 28480 | 0160-7798 |
| C418 | 0160-7798 | 1 | CAP-FXD 0.1uF +-10% 50 V CER X7R | 28480 | 0160-7798 |
| C419 | 0160-7798 | 1 | CAP-FXD 0.1uF +-10% 50 V CER X7R | 28480 | 0160-7798 |
| C421 | 0160-7798 | 1 | CAP-FXD 0.1uF +-10% 50 V CER X7R | 28480 | 0160-7798 |
| C422 | 0160-7798 | 1 | CAP-FXD 0.1uF +-10% 50 V CER X7R | 28480 | 0160-7798 |
| C423 | 0160-7798 | 1 | CAP-FXD 0.1uF +-10% 50 V CER X7R | 28480 | 0160-7798 |
| C424 | 0160-7798 | 1 | CAP-FXD 0.1uF +-10% 50 V CER X7R | 28480 | 0160-7798 |
| C427 | 0160-7798 | 1 | CAP-FXD 0.1uF +-10% 50 V CER X7R | 28480 | 0160-7798 |
| C428 | 0160-7798 | 1 | CAP-FXD 0.1uF +-10% 50 V CER X7R | 28480 | 0160-7798 |
| C429 | 0160-7798 | 1 | CAP-FXD 0.1uF +-10% 50 V CER X7R | 28480 | 0160-7798 |
| C430 | 0160-7798 | 1 | CAP-FXD 0.1uF +-10% 50 V CER X7R | 28480 | 0160-7798 |
| C431 | 0160-7798 | 1 | CAP-FXD 0.1uF +-10% 50 V CER X7R | 28480 | 0160-7798 |
| C432 | 0160-7798 | 1 | CAP-FXD 0.1uF +-10% 50 V CER X7R | 28480 | 0160-7798 |
| C435 | 0160-7798 | 1 | CAP-FXD 0.1uF +-10% 50 V CER X7R | 28480 | 0160-7798 |
| C441 | 0180-4287 | 1 | CAP-FXD 10uF +-20% 35 V TA | 28480 | 0180-4287 |
| C442 | 0160-7798 | 1 | CAP-FXD 0.1uF +-10% 50 V CER X7R | 28480 | 0160-7798 |
| C443 | 0160-7798 | 1 | CAP-FXD 0.1uF +-10% 50 V CER X7R | 28480 | 0160-7798 |
| C444 | 0160-7798 | 1 | CAP-FXD 0.1uF +-10% 50 V CER X7R | 28480 | 0160-7798 |
| C500 | 0160-7798 | 1 | CAP-FXD 0.1uF +-10% 50 V CER X7R | 28480 | 0160-7798 |
| C501 | 0160-7798 | 1 | CAP-FXD 0.1uF +-10% 50 V CER X7R | 28480 | 0160-7798 |
| C502 | 0160-7798 | 1 | CAP-FXD 0.1uF +-10% 50 V CER X7R | 28480 | 0160-7798 |
| C503 | 0160-7798 | 1 | CAP-FXD 0.1uF +-10% 50 V CER X7R | 28480 | 0160-7798 |
| C504 | 0160-7798 | 1 | CAP-FXD 0.1uF +-10% 50 V CER X7R | 28480 | 0160-7798 |
| C505 | 0160-7798 | 1 | CAP-FXD 0.1uF +-10% 50 V CER X7R | 28480 | 0160-7798 |
| C506 | 0160-7798 | 1 | CAP-FXD 0.1uF +-10% 50 V CER X7R | 28480 | 0160-7798 |

**HP Part Number 08712-60042
CPU (continued)**

| Reference Designator | HP Part Number | Qty | Description | Mfr Code | Mfr Part Number |
|----------------------|----------------|-----|-----------------------------------|----------|-----------------|
| C507 | 0160-7798 | 1 | CAP-FXD 0.1uF +-10% 50 V CER X7R | 28480 | 0160-7798 |
| C508 | 0160-7798 | 1 | CAP-FXD 0.1uF +-10% 50 V CER X7R | 28480 | 0160-7798 |
| C509 | 0160-7798 | 1 | CAP-FXD 0.1uF +-10% 50 V CER X7R | 28480 | 0160-7798 |
| C510 | 0160-7798 | 1 | CAP-FXD 0.1uF +-10% 50 V CER X7R | 28480 | 0160-7798 |
| C511 | 0160-7798 | 1 | CAP-FXD 0.1uF +-10% 50 V CER X7R | 28480 | 0160-7798 |
| C512 | 0180-3751 | 1 | CAP-FXD 1uF +-20% 35 V TA | 28480 | 0180-3751 |
| C514 | 0160-7792 | 1 | CAP-FXD 18pF +-5% 50 V CER C0G | 28480 | 0160-7792 |
| C515 | 0160-7792 | 1 | CAP-FXD 18pF +-5% 50 V CER C0G | 28480 | 0160-7792 |
| C516 | 0160-7798 | 1 | CAP-FXD 0.1uF +-10% 50 V CER X7R | 28480 | 0160-7798 |
| C517 | 0160-7748 | 1 | CAP-FXD 1000pF +-10% 50 V CER X7R | 28480 | 0160-7748 |
| C518 | 0160-7748 | 1 | CAP-FXD 1000pF +-10% 50 V CER X7R | 28480 | 0160-7748 |
| C519 | 0180-3751 | 1 | CAP-FXD 1uF +-20% 35 V TA | 28480 | 0180-3751 |
| C520 | 0160-7798 | 1 | CAP-FXD 0.1uF +-10% 50 V CER X7R | 28480 | 0160-7798 |
| C521 | 0160-7798 | 1 | CAP-FXD 0.1uF +-10% 50 V CER X7R | 28480 | 0160-7798 |
| C522 | 0160-7748 | 1 | CAP-FXD 1000pF +-10% 50 V CER X7R | 28480 | 0160-7748 |
| C523 | 0160-7798 | 1 | CAP-FXD 0.1uF +-10% 50 V CER X7R | 28480 | 0160-7798 |
| C524 | 0160-7798 | 1 | CAP-FXD 0.1uF +-10% 50 V CER X7R | 28480 | 0160-7798 |
| C525 | 0160-7748 | 1 | CAP-FXD 1000pF +-10% 50 V CER X7R | 28480 | 0160-7748 |
| C526 | 0160-7798 | 1 | CAP-FXD 0.1uF +-10% 50 V CER X7R | 28480 | 0160-7798 |
| C527 | 0160-7748 | 1 | CAP-FXD 1000pF +-10% 50 V CER X7R | 28480 | 0160-7748 |
| C528 | 0160-7798 | 1 | CAP-FXD 0.1uF +-10% 50 V CER X7R | 28480 | 0160-7798 |
| C529 | 0160-7798 | 1 | CAP-FXD 0.1uF +-10% 50 V CER X7R | 28480 | 0160-7798 |
| C530 | 0160-7798 | 1 | CAP-FXD 0.1uF +-10% 50 V CER X7R | 28480 | 0160-7798 |
| C531 | 0180-3750 | 1 | CAP-FXD 0.47uF +-20% 35 V TA | 28480 | 0180-3750 |
| C532 | 0160-7798 | 1 | CAP-FXD 0.1uF +-10% 50 V CER X7R | 28480 | 0160-7798 |
| C533 | 0160-7798 | 1 | CAP-FXD 0.1uF +-10% 50 V CER X7R | 28480 | 0160-7798 |
| C534 | 0180-4287 | 1 | CAP-FXD 10uF +-20% 35 V TA | 28480 | 0180-4287 |
| C535 | 0180-4287 | 1 | CAP-FXD 10uF +-20% 35 V TA | 28480 | 0180-4287 |
| C536 | 0160-7798 | 1 | CAP-FXD 0.1uF +-10% 50 V CER X7R | 28480 | 0160-7798 |
| C537 | 0160-7798 | 1 | CAP-FXD 0.1uF +-10% 50 V CER X7R | 28480 | 0160-7798 |
| C540 | 0160-7798 | 1 | CAP-FXD 0.1uF +-10% 50 V CER X7R | 28480 | 0160-7798 |
| C541 | 0160-7798 | 1 | CAP-FXD 0.1uF +-10% 50 V CER X7R | 28480 | 0160-7798 |
| C542 | 0160-7798 | 1 | CAP-FXD 0.1uF +-10% 50 V CER X7R | 28480 | 0160-7798 |
| C543 | 0160-7798 | 1 | CAP-FXD 0.1uF +-10% 50 V CER X7R | 28480 | 0160-7798 |
| C544 | 0160-7798 | 1 | CAP-FXD 0.1uF +-10% 50 V CER X7R | 28480 | 0160-7798 |

**Indicates factory-selected value*

**HP Part Number 08712-60042
CPU (continued)**

| Reference Designator | HP Part Number | Qty | Description | Mfr Code | Mfr Part Number |
|----------------------|----------------|-----|------------------------------------|----------|-----------------|
| C545 | 0160-7798 | 1 | CAP-FXD 0.1uF +-10% 50 V CER X7R | 28480 | 0160-7798 |
| C546 | 0160-7798 | 1 | CAP-FXD 0.1uF +-10% 50 V CER X7R | 28480 | 0160-7798 |
| C547 | 0160-7798 | 1 | CAP-FXD 0.1uF +-10% 50 V CER X7R | 28480 | 0160-7798 |
| C548 | 0160-7798 | 1 | CAP-FXD 0.1uF +-10% 50 V CER X7R | 28480 | 0160-7798 |
| C551 | 0160-7798 | 1 | CAP-FXD 0.1uF +-10% 50 V CER X7R | 28480 | 0160-7798 |
| C552 | 0160-7798 | 1 | CAP-FXD 0.1uF +-10% 50 V CER X7R | 28480 | 0160-7798 |
| C560 | 0160-7798 | 1 | CAP-FXD 0.1uF +-10% 50 V CER X7R | 28480 | 0160-7798 |
| C561 | 0160-7798 | 1 | CAP-FXD 0.1uF +-10% 50 V CER X7R | 28480 | 0160-7798 |
| C562 | 0160-7798 | 1 | CAP-FXD 0.1uF +-10% 50 V CER X7R | 28480 | 0160-7798 |
| C563 | 0160-7798 | 1 | CAP-FXD 0.1uF +-10% 50 V CER X7R | 28480 | 0160-7798 |
| C575 | 0160-7798 | 1 | CAP-FXD 0.1uF +-10% 50 V CER X7R | 28480 | 0160-7798 |
| C576 | 0160-7798 | 1 | CAP-FXD 0.1uF +-10% 50 V CER X7R | 28480 | 0160-7798 |
| C601 | 0160-7798 | 1 | CAP-FXD 0.1uF +-10% 50 V CER X7R | 28480 | 0160-7798 |
| C602 | 0160-7798 | 1 | CAP-FXD 0.1uF +-10% 50 V CER X7R | 28480 | 0160-7798 |
| C604 | 0160-7798 | 1 | CAP-FXD 0.1uF +-10% 50 V CER X7R | 28480 | 0160-7798 |
| C605 | 0160-7798 | 1 | CAP-FXD 0.1uF +-10% 50 V CER X7R | 28480 | 0160-7798 |
| C606 | 0180-3749 | 1 | CAP-FXD 0.22uF +-20% 35 V TA | 28480 | 0180-3749 |
| C607 | 0160-7798 | 1 | CAP-FXD 0.1uF +-10% 50 V CER X7R | 28480 | 0160-7798 |
| C608 | 0180-3749 | 1 | CAP-FXD 0.22uF +-20% 35 V TA | 28480 | 0180-3749 |
| C609 | 0160-7849 | 1 | CAP-FXD 220pF +-5% 50 V CER C0G | 28480 | 0160-7849 |
| C610 | 0160-7849 | 1 | CAP-FXD 220pF +-5% 50 V CER C0G | 28480 | 0160-7849 |
| C611 | 0160-7849 | 1 | CAP-FXD 220pF +-5% 50 V CER C0G | 28480 | 0160-7849 |
| C612 | 0160-7798 | 1 | CAP-FXD 0.1uF +-10% 50 V CER X7R | 28480 | 0160-7798 |
| C613 | 0160-7798 | 1 | CAP-FXD 0.1uF +-10% 50 V CER X7R | 28480 | 0160-7798 |
| C614 | 0160-7798 | 1 | CAP-FXD 0.1uF +-10% 50 V CER X7R | 28480 | 0160-7798 |
| C615 | 0180-3643 | 1 | CAP-FXD 470uF +-20% 25 V AL-ELCTLT | 28480 | 0180-3643 |
| C616 | 0160-7798 | 1 | CAP-FXD 0.1uF +-10% 50 V CER X7R | 28480 | 0160-7798 |
| C618 | 0160-7798 | 1 | CAP-FXD 0.1uF +-10% 50 V CER X7R | 28480 | 0160-7798 |
| C619 | 0180-3334 | 1 | CAP-FXD 100uF +-20% 50 V AL-ELCTLT | 28480 | 0180-3334 |
| C621 | 0160-7798 | 1 | CAP-FXD 0.1uF +-10% 50 V CER X7R | 28480 | 0160-7798 |
| C622 | 0160-7798 | 1 | CAP-FXD 0.1uF +-10% 50 V CER X7R | 28480 | 0160-7798 |
| C623 | 0160-7798 | 1 | CAP-FXD 0.1uF +-10% 50 V CER X7R | 28480 | 0160-7798 |
| C624 | 0160-7798 | 1 | CAP-FXD 0.1uF +-10% 50 V CER X7R | 28480 | 0160-7798 |
| C625 | 0160-7798 | 1 | CAP-FXD 0.1uF +-10% 50 V CER X7R | 28480 | 0160-7798 |
| C626 | 0160-7798 | 1 | CAP-FXD 0.1uF +-10% 50 V CER X7R | 28480 | 0160-7798 |

HP Part Number 08712-60042

CPU (continued)

| Reference Designator | HP Part Number | Qty | Description | Mfr Code | Mfr Part Number |
|----------------------|----------------|-----|---------------------------------|----------|-----------------|
| C627 | 0160-7798 | 1 | CAP-FXD 0.1uF +10% 50 V CER X7R | 28480 | 0160-7798 |
| C628 | 0160-7798 | 1 | CAP-FXD 0.1uF +10% 50 V CER X7R | 28480 | 0160-7798 |
| C629 | 0160-7798 | 1 | CAP-FXD 0.1uF +10% 50 V CER X7R | 28480 | 0160-7798 |
| C630 | 0160-7798 | 1 | CAP-FXD 0.1uF +10% 50 V CER X7R | 28480 | 0160-7798 |
| C631 | 0180-4287 | 1 | CAP-FXD 10uF +20% 35 V TA | 28480 | 0180-4287 |
| C633 | 0160-7798 | 1 | CAP-FXD 0.1uF +10% 50 V CER X7R | 28480 | 0160-7798 |
| C634 | 0160-7798 | 1 | CAP-FXD 0.1uF +10% 50 V CER X7R | 28480 | 0160-7798 |
| C635 | 0160-7798 | 1 | CAP-FXD 0.1uF +10% 50 V CER X7R | 28480 | 0160-7798 |
| C636 | 0160-7849 | 1 | CAP-FXD 220pF +5% 50 V CER C0G | 28480 | 0160-7849 |
| C637 | 0160-7849 | 1 | CAP-FXD 220pF +5% 50 V CER C0G | 28480 | 0160-7849 |
| C638 | 0160-7849 | 1 | CAP-FXD 220pF +5% 50 V CER C0G | 28480 | 0160-7849 |
| C639 | 0160-7849 | 1 | CAP-FXD 220pF +5% 50 V CER C0G | 28480 | 0160-7849 |
| C640 | 0160-7849 | 1 | CAP-FXD 220pF +5% 50 V CER C0G | 28480 | 0160-7849 |
| C641 | 0160-7849 | 1 | CAP-FXD 220pF +5% 50 V CER C0G | 28480 | 0160-7849 |
| C642 | 0160-7849 | 1 | CAP-FXD 220pF +5% 50 V CER C0G | 28480 | 0160-7849 |
| C643 | 0160-7849 | 1 | CAP-FXD 220pF +5% 50 V CER C0G | 28480 | 0160-7849 |
| C644 | 0160-7849 | 1 | CAP-FXD 220pF +5% 50 V CER C0G | 28480 | 0160-7849 |
| C645 | 0160-7849 | 1 | CAP-FXD 220pF +5% 50 V CER C0G | 28480 | 0160-7849 |
| C646 | 0160-7849 | 1 | CAP-FXD 220pF +5% 50 V CER C0G | 28480 | 0160-7849 |
| C647 | 0160-7849 | 1 | CAP-FXD 220pF +5% 50 V CER C0G | 28480 | 0160-7849 |
| C648 | 0160-7849 | 1 | CAP-FXD 220pF +5% 50 V CER C0G | 28480 | 0160-7849 |
| C649 | 0160-7849 | 1 | CAP-FXD 220pF +5% 50 V CER C0G | 28480 | 0160-7849 |
| C650 | 0160-7849 | 1 | CAP-FXD 220pF +5% 50 V CER C0G | 28480 | 0160-7849 |
| C651 | 0160-7849 | 1 | CAP-FXD 220pF +5% 50 V CER C0G | 28480 | 0160-7849 |
| C652 | 0160-7849 | 1 | CAP-FXD 220pF +5% 50 V CER C0G | 28480 | 0160-7849 |
| C653 | 0160-7798 | 1 | CAP-FXD 0.1uF +10% 50 V CER X7R | 28480 | 0160-7798 |
| C654 | 0160-7798 | 1 | CAP-FXD 0.1uF +10% 50 V CER X7R | 28480 | 0160-7798 |
| C655 | 0160-7798 | 1 | CAP-FXD 0.1uF +10% 50 V CER X7R | 28480 | 0160-7798 |
| C666 | 0160-7798 | 1 | CAP-FXD 0.1uF +10% 50 V CER X7R | 28480 | 0160-7798 |
| C701 | 0160-7798 | 1 | CAP-FXD 0.1uF +10% 50 V CER X7R | 28480 | 0160-7798 |
| C702 | 0180-4287 | 1 | CAP-FXD 10uF +20% 35 V TA | 28480 | 0180-4287 |
| C703 | 0160-7798 | 1 | CAP-FXD 0.1uF +10% 50 V CER X7R | 28480 | 0160-7798 |
| C704 | 0160-7798 | 1 | CAP-FXD 0.1uF +10% 50 V CER X7R | 28480 | 0160-7798 |
| C705 | 0160-7798 | 1 | CAP-FXD 0.1uF +10% 50 V CER X7R | 28480 | 0160-7798 |
| C706 | 0160-7798 | 1 | CAP-FXD 0.1uF +10% 50 V CER X7R | 28480 | 0160-7798 |

**Indicates factory-selected value*

**HP Part Number 08712-60042
CPU (continued)**

| Reference Designator | HP Part Number | Qty | Description | Mfr Code | Mfr Part Number |
|----------------------|----------------|-----|---------------------------------|----------|-----------------|
| C707 | 0160-7798 | 1 | CAP-FXD 0.1uF +10% 50 V CER X7R | 28480 | 0160-7798 |
| C710 | 0160-7798 | 1 | CAP-FXD 0.1uF +10% 50 V CER X7R | 28480 | 0160-7798 |
| C713 | 0160-7798 | 1 | CAP-FXD 0.1uF +10% 50 V CER X7R | 28480 | 0160-7798 |
| C715 | 0160-7798 | 1 | CAP-FXD 0.1uF +10% 50 V CER X7R | 28480 | 0160-7798 |
| C716 | 0160-7798 | 1 | CAP-FXD 0.1uF +10% 50 V CER X7R | 28480 | 0160-7798 |
| C717 | 0160-7798 | 1 | CAP-FXD 0.1uF +10% 50 V CER X7R | 28480 | 0160-7798 |
| C718 | 0160-7798 | 1 | CAP-FXD 0.1uF +10% 50 V CER X7R | 28480 | 0160-7798 |
| C720 | 0160-7798 | 1 | CAP-FXD 0.1uF +10% 50 V CER X7R | 28480 | 0160-7798 |
| C721 | 0160-7798 | 1 | CAP-FXD 0.1uF +10% 50 V CER X7R | 28480 | 0160-7798 |
| C722 | 0160-7798 | 1 | CAP-FXD 0.1uF +10% 50 V CER X7R | 28480 | 0160-7798 |
| C723 | 0160-7798 | 1 | CAP-FXD 0.1uF +10% 50 V CER X7R | 28480 | 0160-7798 |
| C725 | 0160-7798 | 1 | CAP-FXD 0.1uF +10% 50 V CER X7R | 28480 | 0160-7798 |
| C726 | 0160-7798 | 1 | CAP-FXD 0.1uF +10% 50 V CER X7R | 28480 | 0160-7798 |
| C727 | 0160-7798 | 1 | CAP-FXD 0.1uF +10% 50 V CER X7R | 28480 | 0160-7798 |
| C728 | 0160-7798 | 1 | CAP-FXD 0.1uF +10% 50 V CER X7R | 28480 | 0160-7798 |
| C729 | 0160-7798 | 1 | CAP-FXD 0.1uF +10% 50 V CER X7R | 28480 | 0160-7798 |
| C730 | 0160-7798 | 1 | CAP-FXD 0.1uF +10% 50 V CER X7R | 28480 | 0160-7798 |
| C731 | 0160-7798 | 1 | CAP-FXD 0.1uF +10% 50 V CER X7R | 28480 | 0160-7798 |
| C732 | 0160-7798 | 1 | CAP-FXD 0.1uF +10% 50 V CER X7R | 28480 | 0160-7798 |
| C733 | 0160-7798 | 1 | CAP-FXD 0.1uF +10% 50 V CER X7R | 28480 | 0160-7798 |
| C734 | 0160-7798 | 1 | CAP-FXD 0.1uF +10% 50 V CER X7R | 28480 | 0160-7798 |
| C735 | 0160-7798 | 1 | CAP-FXD 0.1uF +10% 50 V CER X7R | 28480 | 0160-7798 |
| C736 | 0160-7798 | 1 | CAP-FXD 0.1uF +10% 50 V CER X7R | 28480 | 0160-7798 |
| C737 | 0160-7798 | 1 | CAP-FXD 0.1uF +10% 50 V CER X7R | 28480 | 0160-7798 |
| C738 | 0160-7798 | 1 | CAP-FXD 0.1uF +10% 50 V CER X7R | 28480 | 0160-7798 |
| C739 | 0160-7798 | 1 | CAP-FXD 0.1uF +10% 50 V CER X7R | 28480 | 0160-7798 |
| C740 | 0160-7798 | 1 | CAP-FXD 0.1uF +10% 50 V CER X7R | 28480 | 0160-7798 |
| C741 | 0160-7511 | 1 | CAP-FXD 270pF +5% 50 V CER C0G | 28480 | 0160-7511 |
| C742 | 0160-7511 | 1 | CAP-FXD 270pF +5% 50 V CER C0G | 28480 | 0160-7511 |
| C743 | 0160-7511 | 1 | CAP-FXD 270pF +5% 50 V CER C0G | 28480 | 0160-7511 |
| C745 | 0160-7798 | 1 | CAP-FXD 0.1uF +10% 50 V CER X7R | 28480 | 0160-7798 |
| C750 | 0160-7798 | 1 | CAP-FXD 0.1uF +10% 50 V CER X7R | 28480 | 0160-7798 |
| C751 | 0160-7798 | 1 | CAP-FXD 0.1uF +10% 50 V CER X7R | 28480 | 0160-7798 |
| C752 | 0160-7798 | 1 | CAP-FXD 0.1uF +10% 50 V CER X7R | 28480 | 0160-7798 |
| C753 | 0160-7798 | 1 | CAP-FXD 0.1uF +10% 50 V CER X7R | 28480 | 0160-7798 |

**HP Part Number 08712-60042
CPU (continued)**

| Reference Designator | HP Part Number | Qty | Description | Mfr Code | Mfr Part Number |
|----------------------|----------------|-----|----------------------------------|----------|-----------------|
| C801 | 0160-7798 | 1 | CAP-FXD 0.1uF +-10% 50 V CER X7R | 28480 | 0160-7798 |
| C802 | 0160-7798 | 1 | CAP-FXD 0.1uF +-10% 50 V CER X7R | 28480 | 0160-7798 |
| C803 | 0160-7798 | 1 | CAP-FXD 0.1uF +-10% 50 V CER X7R | 28480 | 0160-7798 |
| C804 | 0160-7798 | 1 | CAP-FXD 0.1uF +-10% 50 V CER X7R | 28480 | 0160-7798 |
| C805 | 0160-7798 | 1 | CAP-FXD 0.1uF +-10% 50 V CER X7R | 28480 | 0160-7798 |
| C806 | 0160-7798 | 1 | CAP-FXD 0.1uF +-10% 50 V CER X7R | 28480 | 0160-7798 |
| C807 | 0160-7798 | 1 | CAP-FXD 0.1uF +-10% 50 V CER X7R | 28480 | 0160-7798 |
| C808 | 0160-7798 | 1 | CAP-FXD 0.1uF +-10% 50 V CER X7R | 28480 | 0160-7798 |
| C809 | 0160-7798 | 1 | CAP-FXD 0.1uF +-10% 50 V CER X7R | 28480 | 0160-7798 |
| C810 | 0160-7798 | 1 | CAP-FXD 0.1uF +-10% 50 V CER X7R | 28480 | 0160-7798 |
| C811 | 0160-7798 | 1 | CAP-FXD 0.1uF +-10% 50 V CER X7R | 28480 | 0160-7798 |
| C812 | 0160-7798 | 1 | CAP-FXD 0.1uF +-10% 50 V CER X7R | 28480 | 0160-7798 |
| C813 | 0160-7798 | 1 | CAP-FXD 0.1uF +-10% 50 V CER X7R | 28480 | 0160-7798 |
| C814 | 0160-7798 | 1 | CAP-FXD 0.1uF +-10% 50 V CER X7R | 28480 | 0160-7798 |
| C820 | 0160-7798 | 1 | CAP-FXD 0.1uF +-10% 50 V CER X7R | 28480 | 0160-7798 |
| C900 | 0160-7798 | 1 | CAP-FXD 0.1uF +-10% 50 V CER X7R | 28480 | 0160-7798 |
| C901 | 0160-7798 | 1 | CAP-FXD 0.1uF +-10% 50 V CER X7R | 28480 | 0160-7798 |
| C902 | 0160-7798 | 1 | CAP-FXD 0.1uF +-10% 50 V CER X7R | 28480 | 0160-7798 |
| C903 | 0160-7798 | 1 | CAP-FXD 0.1uF +-10% 50 V CER X7R | 28480 | 0160-7798 |
| C904 | 0160-7798 | 1 | CAP-FXD 0.1uF +-10% 50 V CER X7R | 28480 | 0160-7798 |
| C905 | 0160-7798 | 1 | CAP-FXD 0.1uF +-10% 50 V CER X7R | 28480 | 0160-7798 |
| C906 | 0160-7798 | 1 | CAP-FXD 0.1uF +-10% 50 V CER X7R | 28480 | 0160-7798 |
| C907 | 0160-7798 | 1 | CAP-FXD 0.1uF +-10% 50 V CER X7R | 28480 | 0160-7798 |
| C909 | 0160-7798 | 1 | CAP-FXD 0.1uF +-10% 50 V CER X7R | 28480 | 0160-7798 |
| C912 | 0160-7798 | 1 | CAP-FXD 0.1uF +-10% 50 V CER X7R | 28480 | 0160-7798 |
| C913 | 0160-7798 | 1 | CAP-FXD 0.1uF +-10% 50 V CER X7R | 28480 | 0160-7798 |
| C914 | 0160-7798 | 1 | CAP-FXD 0.1uF +-10% 50 V CER X7R | 28480 | 0160-7798 |
| C915 | 0160-7798 | 1 | CAP-FXD 0.1uF +-10% 50 V CER X7R | 28480 | 0160-7798 |
| C918 | 0160-7798 | 1 | CAP-FXD 0.1uF +-10% 50 V CER X7R | 28480 | 0160-7798 |
| C919 | 0160-7798 | 1 | CAP-FXD 0.1uF +-10% 50 V CER X7R | 28480 | 0160-7798 |
| C920 | 0160-7798 | 1 | CAP-FXD 0.1uF +-10% 50 V CER X7R | 28480 | 0160-7798 |
| C921 | 0160-7798 | 1 | CAP-FXD 0.1uF +-10% 50 V CER X7R | 28480 | 0160-7798 |
| C922 | 0160-7798 | 1 | CAP-FXD 0.1uF +-10% 50 V CER X7R | 28480 | 0160-7798 |
| C923 | 0160-7798 | 1 | CAP-FXD 0.1uF +-10% 50 V CER X7R | 28480 | 0160-7798 |
| C926 | 0160-7798 | 1 | CAP-FXD 0.1uF +-10% 50 V CER X7R | 28480 | 0160-7798 |

**Indicates factory-selected value*

HP Part Number 08712-60042
CPU (continued)

| Reference Designator | HP Part Number | Qty | Description | Mfr Code | Mfr Part Number |
|----------------------|----------------|-----|------------------------------------|----------|-----------------|
| C927 | 0160-7798 | 1 | CAP-FXD 0.1uF +-10% 50 V CER X7R | 28480 | 0160-7798 |
| C928 | 0160-7798 | 1 | CAP-FXD 0.1uF +-10% 50 V CER X7R | 28480 | 0160-7798 |
| C929 | 0160-7798 | 1 | CAP-FXD 0.1uF +-10% 50 V CER X7R | 28480 | 0160-7798 |
| C930 | 0160-7798 | 1 | CAP-FXD 0.1uF +-10% 50 V CER X7R | 28480 | 0160-7798 |
| C932 | 0160-7798 | 1 | CAP-FXD 0.1uF +-10% 50 V CER X7R | 28480 | 0160-7798 |
| C935 | 0160-7798 | 1 | CAP-FXD 0.1uF +-10% 50 V CER X7R | 28480 | 0160-7798 |
| C936 | 0180-4287 | 1 | CAP-FXD 10uF +-20% 35 V TA | 28480 | 0180-4287 |
| C940 | 0180-4287 | 1 | CAP-FXD 10uF +-20% 35 V TA | 28480 | 0180-4287 |
| C942 | 0160-7798 | 1 | CAP-FXD 0.1uF +-10% 50 V CER X7R | 28480 | 0160-7798 |
| C943 | 0160-7798 | 1 | CAP-FXD 0.1uF +-10% 50 V CER X7R | 28480 | 0160-7798 |
| C944 | 0160-7798 | 1 | CAP-FXD 0.1uF +-10% 50 V CER X7R | 28480 | 0160-7798 |
| C945 | 0160-7798 | 1 | CAP-FXD 0.1uF +-10% 50 V CER X7R | 28480 | 0160-7798 |
| C1001 | 0160-7798 | 1 | CAP-FXD 0.1uF +-10% 50 V CER X7R | 28480 | 0160-7798 |
| C1002 | 0160-7798 | 1 | CAP-FXD 0.1uF +-10% 50 V CER X7R | 28480 | 0160-7798 |
| C1003 | 0160-7798 | 1 | CAP-FXD 0.1uF +-10% 50 V CER X7R | 28480 | 0160-7798 |
| C1004 | 0160-7798 | 1 | CAP-FXD 0.1uF +-10% 50 V CER X7R | 28480 | 0160-7798 |
| C1006 | 0160-7798 | 1 | CAP-FXD 0.1uF +-10% 50 V CER X7R | 28480 | 0160-7798 |
| C1015 | 0160-7798 | 1 | CAP-FXD 0.1uF +-10% 50 V CER X7R | 28480 | 0160-7798 |
| C1016 | 0160-7798 | 1 | CAP-FXD 0.1uF +-10% 50 V CER X7R | 28480 | 0160-7798 |
| C1017 | 0160-7798 | 1 | CAP-FXD 0.1uF +-10% 50 V CER X7R | 28480 | 0160-7798 |
| C1021 | 0160-7798 | 1 | CAP-FXD 0.1uF +-10% 50 V CER X7R | 28480 | 0160-7798 |
| C1025 | 0160-7798 | 1 | CAP-FXD 0.1uF +-10% 50 V CER X7R | 28480 | 0160-7798 |
| C1026 | 0180-3334 | 1 | CAP-FXD 100uF +-20% 50 V AL-ELCTLT | 28480 | 0180-3334 |
| C1029 | 0160-7798 | 1 | CAP-FXD 0.1uF +-10% 50 V CER X7R | 28480 | 0160-7798 |
| C1030 | 0160-7798 | 1 | CAP-FXD 0.1uF +-10% 50 V CER X7R | 28480 | 0160-7798 |
| C1031 | 0180-4287 | 1 | CAP-FXD 10uF +-20% 35 V TA | 28480 | 0180-4287 |
| C1032 | 0160-7798 | 1 | CAP-FXD 0.1uF +-10% 50 V CER X7R | 28480 | 0160-7798 |
| C1033 | 0160-7798 | 1 | CAP-FXD 0.1uF +-10% 50 V CER X7R | 28480 | 0160-7798 |
| C1041 | 0160-7798 | 1 | CAP-FXD 0.1uF +-10% 50 V CER X7R | 28480 | 0160-7798 |
| C1042 | 0160-7798 | 1 | CAP-FXD 0.1uF +-10% 50 V CER X7R | 28480 | 0160-7798 |
| C1043 | 0160-7798 | 1 | CAP-FXD 0.1uF +-10% 50 V CER X7R | 28480 | 0160-7798 |
| C1044 | 0160-7798 | 1 | CAP-FXD 0.1uF +-10% 50 V CER X7R | 28480 | 0160-7798 |
| C1045 | 0160-7798 | 1 | CAP-FXD 0.1uF +-10% 50 V CER X7R | 28480 | 0160-7798 |
| C1046 | 0180-4287 | 1 | CAP-FXD 10uF +-20% 35 V TA | 28480 | 0180-4287 |
| C1047 | 0160-7798 | 1 | CAP-FXD 0.1uF +-10% 50 V CER X7R | 28480 | 0160-7798 |

**HP Part Number 08712-60042
CPU (continued)**

| Reference Designator | HP Part Number | Qty | Description | Mfr Code | Mfr Part Number |
|----------------------|----------------|-----|--------------------------------------|----------|-----------------|
| C1048 | 0160-7798 | 1 | CAP-FXD 0.1uF +-10% 50 V CER X7R | 28480 | 0160-7798 |
| C1049 | 0160-7798 | 1 | CAP-FXD 0.1uF +-10% 50 V CER X7R | 28480 | 0160-7798 |
| C1050 | 0160-7798 | 1 | CAP-FXD 0.1uF +-10% 50 V CER X7R | 28480 | 0160-7798 |
| C1051 | 0160-7798 | 1 | CAP-FXD 0.1uF +-10% 50 V CER X7R | 28480 | 0160-7798 |
| C1052 | 0160-7798 | 1 | CAP-FXD 0.1uF +-10% 50 V CER X7R | 28480 | 0160-7798 |
| C1053 | 0160-7798 | 1 | CAP-FXD 0.1uF +-10% 50 V CER X7R | 28480 | 0160-7798 |
| C1054 | 0160-7798 | 1 | CAP-FXD 0.1uF +-10% 50 V CER X7R | 28480 | 0160-7798 |
| C1055 | 0160-7798 | 1 | CAP-FXD 0.1uF +-10% 50 V CER X7R | 28480 | 0160-7798 |
| C1056 | 0160-7798 | 1 | CAP-FXD 0.1uF +-10% 50 V CER X7R | 28480 | 0160-7798 |
| C1057 | 0180-4287 | 1 | CAP-FXD 10uF +-20% 35 V TA | 28480 | 0180-4287 |
| C1060 | 0160-7751 | 1 | CAP-FXD 0.01uF +-10% 50 V CER X7R | 28480 | 0160-7751 |
| C1061 | 0160-7751 | 1 | CAP-FXD 0.01uF +-10% 50 V CER X7R | 28480 | 0160-7751 |
| C1066 | 0160-7798 | 1 | CAP-FXD 0.1uF +-10% 50 V CER X7R | 28480 | 0160-7798 |
| C1067 | 0160-7798 | 1 | CAP-FXD 0.1uF +-10% 50 V CER X7R | 28480 | 0160-7798 |
| CR100 | 1906-0291 | 1 | DIODE-DUAL 70V 100MA T0-236AA | 28480 | 1906-0291 |
| CR201 | 1906-0291 | 1 | DIODE-DUAL 70V 100MA T0-236AA | 28480 | 1906-0291 |
| CR202 | 1906-0291 | 1 | DIODE-DUAL 70V 100MA T0-236AA | 28480 | 1906-0291 |
| CR205 | 1901-1295 | 1 | DIODE-V-SUPPR | 28480 | 1901-1295 |
| CR301 | 1901-0880 | 1 | DIODE-GEN PRP 200MA DO-35 | 02237 | 1MD2 |
| CR501 | 1901-1227 | 1 | DIODE-SWITCHING 75V 200MA 6NS TO-236 | 02237 | BAS16 |
| CR502 | 1906-0375 | 1 | DIODE-ARRAY 50V 400MA | 28480 | 1906-0375 |
| CR503 | 1906-0375 | 1 | DIODE-ARRAY 50V 400MA | 28480 | 1906-0375 |
| CR505 | 1906-0291 | 1 | DIODE-DUAL 70V 100MA T0-236AA | 28480 | 1906-0291 |
| CR506 | 1906-0291 | 1 | DIODE-DUAL 70V 100MA T0-236AA | 28480 | 1906-0291 |
| CR507 | 1901-1227 | 1 | DIODE-SWITCHING 75V 200MA 6NS TO-236 | 02237 | BAS16 |
| CR508 | 1906-0375 | 1 | DIODE-ARRAY 50V 400MA | 28480 | 1906-0375 |
| CR509 | 1906-0375 | 1 | DIODE-ARRAY 50V 400MA | 28480 | 1906-0375 |
| CR601 | 1906-0291 | 1 | DIODE-DUAL 70V 100MA T0-236AA | 28480 | 1906-0291 |
| CR602 | 1906-0291 | 1 | DIODE-DUAL 70V 100MA T0-236AA | 28480 | 1906-0291 |
| CR603 | 1906-0291 | 1 | DIODE-DUAL 70V 100MA T0-236AA | 28480 | 1906-0291 |
| CR605 | 1906-0291 | 1 | DIODE-DUAL 70V 100MA T0-236AA | 28480 | 1906-0291 |
| CR606 | 1906-0291 | 1 | DIODE-DUAL 70V 100MA T0-236AA | 28480 | 1906-0291 |
| CR608 | 1906-0375 | 1 | DIODE-ARRAY 50V 400MA | 28480 | 1906-0375 |
| CR609 | 1906-0375 | 1 | DIODE-ARRAY 50V 400MA | 28480 | 1906-0375 |
| CR610 | 1906-0291 | 1 | DIODE-DUAL 70V 100MA T0-236AA | 28480 | 1906-0291 |

**Indicates factory-selected value*

**HP Part Number 08712-60042
CPU (continued)**

| Reference Designator | HP Part Number | Qty | Description | Mfr Code | Mfr Part Number |
|----------------------|----------------|-----|---|----------|-----------------|
| CR701 | 1906-0382 | 1 | DIODE-ARRAY 50V 400MA SO-16 | 28480 | 1906-0382 |
| CR702 | 1906-0291 | 1 | DIODE-DUAL 70V 100MA T0-236AA | 28480 | 1906-0291 |
| CR801 | 1906-0291 | 1 | DIODE-DUAL 70V 100MA T0-236AA | 28480 | 1906-0291 |
| CR1001 | 1826-1746 | 1 | IC PWR MGT-V-REF-FXD 1.205/1.26V 8 PINS | 28480 | 1826-1746 |
| CR1002 | 1906-0375 | 1 | DIODE-ARRAY 50V 400MA | 28480 | 1906-0375 |
| DL401 | 1810-1689 | 1 | DELAY LINE ACTIVE DEVICE W/DUAL IN-LINE | 28480 | 1810-1689 |
| DS101 | 1990-1267 | 1 | LED-LAMP LUM-INT=400UCD IF=12.5MA-MAX | 28480 | 1990-1267 |
| DS104 | 1990-1267 | 1 | LED-LAMP LUM-INT=400UCD IF=12.5MA-MAX | 28480 | 1990-1267 |
| DS201 | 1990-1266 | 1 | LED-LAMP LUM-INT=400UCD IF=12.5MA-MAX | 28480 | 1990-1266 |
| DS203 | 1990-1267 | 1 | LED-LAMP LUM-INT=400UCD IF=12.5MA-MAX | 28480 | 1990-1267 |
| DS204 | 1990-1266 | 1 | LED-LAMP LUM-INT=400UCD IF=12.5MA-MAX | 28480 | 1990-1266 |
| DS215 | 1990-1266 | 1 | LED-LAMP LUM-INT=400UCD IF=12.5MA-MAX | 28480 | 1990-1266 |
| DS216 | 1990-1266 | 1 | LED-LAMP LUM-INT=400UCD IF=12.5MA-MAX | 28480 | 1990-1266 |
| DS217 | 1990-1266 | 1 | LED-LAMP LUM-INT=400UCD IF=12.5MA-MAX | 28480 | 1990-1266 |
| DS218 | 1990-1266 | 1 | LED-LAMP LUM-INT=400UCD IF=12.5MA-MAX | 28480 | 1990-1266 |
| DS301 | 1990-1267 | 1 | LED-LAMP LUM-INT=400UCD IF=12.5MA-MAX | 28480 | 1990-1267 |
| DS701 | 1990-1267 | 1 | LED-LAMP LUM-INT=400UCD IF=12.5MA-MAX | 28480 | 1990-1267 |
| DS801 | 1990-1266 | 1 | LED-LAMP LUM-INT=400UCD IF=12.5MA-MAX | 28480 | 1990-1266 |
| DS901 | 1990-1266 | 1 | LED-LAMP LUM-INT=400UCD IF=12.5MA-MAX | 28480 | 1990-1266 |
| DS1001 | 1990-1266 | 1 | LED-LAMP LUM-INT=400UCD IF=12.5MA-MAX | 28480 | 1990-1266 |
| DS1002 | 1990-1266 | 1 | LED-LAMP LUM-INT=400UCD IF=12.5MA-MAX | 28480 | 1990-1266 |
| DS1003 | 1990-1267 | 1 | LED-LAMP LUM-INT=400UCD IF=12.5MA-MAX | 28480 | 1990-1267 |
| DS1004 | 1990-1266 | 1 | LED-LAMP LUM-INT=400UCD IF=12.5MA-MAX | 28480 | 1990-1266 |
| DS1005 | 1990-1266 | 1 | LED-LAMP LUM-INT=400UCD IF=12.5MA-MAX | 28480 | 1990-1266 |
| DS1066 | 1990-1267 | 1 | LED-LAMP LUM-INT=400UCD IF=12.5MA-MAX | 28480 | 1990-1267 |
| E101 | 9170-1421 | 1 | CORE-SHIELDING BEAD | 28480 | 9170-1421 |
| E103 | 9170-1421 | 1 | CORE-SHIELDING BEAD | 28480 | 9170-1421 |
| E105 | 9170-1421 | 1 | CORE-SHIELDING BEAD | 28480 | 9170-1421 |
| E201 | 9170-1421 | 1 | CORE-SHIELDING BEAD | 28480 | 9170-1421 |
| E202 | 9170-1421 | 1 | CORE-SHIELDING BEAD | 28480 | 9170-1421 |
| E203 | 9170-1421 | 1 | CORE-SHIELDING BEAD | 28480 | 9170-1421 |
| E204 | 9170-1421 | 1 | CORE-SHIELDING BEAD | 28480 | 9170-1421 |
| E205 | 9100-1788 | 1 | CORE-FERRITE CHOKE-WIDEBAND;IMP:>680 | 28480 | 9100-1788 |
| E206 | 9100-1788 | 1 | CORE-FERRITE CHOKE-WIDEBAND;IMP:>680 | 28480 | 9100-1788 |
| E207 | 9100-1788 | 1 | CORE-FERRITE CHOKE-WIDEBAND;IMP:>680 | 28480 | 9100-1788 |

**HP Part Number 08712-60042
CPU (continued)**

| Reference Designator | HP Part Number | Qty | Description | Mfr Code | Mfr Part Number |
|----------------------|----------------|-----|--------------------------------------|----------|-----------------|
| E208 | 9100-1788 | 1 | CORE-FERRITE CHOKE-WIDEBAND;IMP:>680 | 28480 | 9100-1788 |
| E301 | 9170-1421 | 1 | CORE-SHIELDING BEAD | 28480 | 9170-1421 |
| E401 | 9170-1421 | 1 | CORE-SHIELDING BEAD | 28480 | 9170-1421 |
| E501 | 1205-0639 | 1 | HEAT SINK SGL TO-220-CS | 07179 | 576802B03100 |
| E502 | 9170-1368 | 1 | CORE-SHIELDING BEAD | 28480 | 9170-1368 |
| E503 | 9170-1368 | 1 | CORE-SHIELDING BEAD | 28480 | 9170-1368 |
| E504 | 9170-1421 | 1 | CORE-SHIELDING BEAD | 28480 | 9170-1421 |
| E505 | 9170-1421 | 1 | CORE-SHIELDING BEAD | 28480 | 9170-1421 |
| E506 | 9170-1421 | 1 | CORE-SHIELDING BEAD | 28480 | 9170-1421 |
| E509 | 9170-1421 | 1 | CORE-SHIELDING BEAD | 28480 | 9170-1421 |
| E601 | 9170-1421 | 1 | CORE-SHIELDING BEAD | 28480 | 9170-1421 |
| E602 | 9170-1421 | 1 | CORE-SHIELDING BEAD | 28480 | 9170-1421 |
| E603 | 9170-1421 | 1 | CORE-SHIELDING BEAD | 28480 | 9170-1421 |
| E701 | 9170-1421 | 1 | CORE-SHIELDING BEAD | 28480 | 9170-1421 |
| E702 | 9170-1421 | 1 | CORE-SHIELDING BEAD | 28480 | 9170-1421 |
| E901 | 9170-1421 | 1 | CORE-SHIELDING BEAD | 28480 | 9170-1421 |
| E902 | 9170-1421 | 1 | CORE-SHIELDING BEAD | 28480 | 9170-1421 |
| E903 | 9170-1421 | 1 | CORE-SHIELDING BEAD | 28480 | 9170-1421 |
| E1001 | 9170-1421 | 1 | CORE-SHIELDING BEAD | 28480 | 9170-1421 |
| E1003 | 9170-1421 | 1 | CORE-SHIELDING BEAD | 28480 | 9170-1421 |
| E1004 | 9170-1421 | 1 | CORE-SHIELDING BEAD | 28480 | 9170-1421 |
| E1005 | 9170-1421 | 1 | CORE-SHIELDING BEAD | 28480 | 9170-1421 |
| FL601 | 9135-0461 | 1 | FILTER-SUPPRESSION EMI; SMT; WORKING | 09939 | NFM61R10T102 |
| FL602 | 9135-0461 | 1 | FILTER-SUPPRESSION EMI; SMT; WORKING | 09939 | NFM61R10T102 |
| FL603 | 9135-0461 | 1 | FILTER-SUPPRESSION EMI; SMT; WORKING | 09939 | NFM61R10T102 |
| FL1001 | 9135-5103 | 1 | LINE MODULE-FILTERED LAN FILTER | 11855 | LANF7236 |
| J101 | 1252-2356 | 1 | CONN-POST TYPE 2.54-PIN-SPCG-MTG-END | 28480 | 1252-2356 |
| J105 | 1252-0169 | 1 | CONN-POST TYPE .100-PIN-SPCG-MTG-END | 28480 | 1252-0169 |
| J201 | 1252-6024 | 1 | CONN-RECT MICRORBN 100-CKT 100-CONT | 28480 | 1252-6024 |
| J502 | 1250-1842 | 1 | CONNECTOR-RF BNC FEMALE PC-W-STDFS | 28480 | 1250-1842 |
| J503 | 1250-1842 | 1 | CONNECTOR-RF BNC FEMALE PC-W-STDFS | 28480 | 1250-1842 |
| J507 | 1252-1492 | 1 | CONN-RECT MICRORBN 24-CKT 24-CONT | 28480 | 1252-1492 |
| J510 | 1251-8248 | 1 | CONN-POST TYPE .100-PIN-SPCG-MTG-END | 28480 | 1251-8248 |
| J606 | 1252-1201 | 1 | CONN-RECT D-SUBMIN 25-CKT 25-CONT | 28480 | 1252-1201 |
| J608 | 1252-3439 | 1 | CONNECTOR 6-PIN F CIRCULAR DIN | 01380 | 749180-1 |

**Indicates factory-selected value*

**HP Part Number 08712-60042
CPU (continued)**

| Reference Designator | HP Part Number | Qty | Description | Mfr Code | Mfr Part Number |
|----------------------|----------------|-----|--|----------|-----------------|
| J611 | 1251-8601 | 1 | CONN-POST TYPE .100-PIN-SPCG-MTG-END | 28480 | 1251-8601 |
| J612 | 1252-3053 | 1 | CONN-POST TYPE .100-PIN-SPCG-MTG-END | 28480 | 1252-3053 |
| J617 | 1252-1994 | 1 | CONN-RECT D-SUBMIN 9-CKT 9-CONT | 28480 | 1252-1994 |
| J645 | 1252-0169 | 1 | CONN-POST TYPE .100-PIN-SPCG-MTG-END | 28480 | 1252-0169 |
| J702 | 1252-0169 | 1 | CONN-POST TYPE .100-PIN-SPCG-MTG-END | 28480 | 1252-0169 |
| J802 | 1250-1842 | 1 | CONNECTOR-RF BNC FEMALE PC-W-STDFS | 28480 | 1250-1842 |
| J1001 | 1252-4475 | 1 | MODULAR PHONE RCPT RIGHT ANGLE PC MOUNT | 01380 | 555141-1 |
| J1030 | 1252-2846 | 1 | CONN-RECT D-SUBMIN 15-CKT 15-CONT | 28480 | 1252-2846 |
| J1040 | 1251-8106 | 1 | CONN-POST TYPE .100-PIN-SPCG-MTG-END | 28480 | 1251-8106 |
| L501 | 9140-1432 | 1 | INDUCTOR 39uH +-5% 3.4W-mmX4.8LG-mm Q=50 | 28480 | 9140-1432 |
| L601 | 9140-1290 | 1 | INDUCTOR 33uH +-10% 11.5D-mm Q=80 | 28480 | 9140-1290 |
| LS501 | 0960-0561 | 1 | AUDIO TRANSDUCER 1-3VDC; 80DB AT 10CM | 08261 | QMB-01-S.P. |
| MABT301 | 0403-0423 | 1 | BUMPER FOOT-ADH MTG | 02170 | 1572 |
| MAJ105 | 1258-0218 | 1 | JUMPER 16 GOLD PLTD PHOSPHOR BRONZE | 03206 | 69145-216 |
| MAJ510 | 1251-5595 | 1 | POLARIZING KEY-POST CONN | 04726 | 80-6100-8984-1 |
| MAJ611 | 1251-5595 | 1 | POLARIZING KEY-POST CONN | 04726 | 80-6100-8984-1 |
| MAJ645 | 1258-0218 | 1 | JUMPER 16 GOLD PLTD PHOSPHOR BRONZE | 03206 | 69145-216 |
| MAJ702 | 1258-0218 | 1 | JUMPER 16 GOLD PLTD PHOSPHOR BRONZE | 03206 | 69145-216 |
| MAJ1040 | 1251-5595 | 1 | POLARIZING KEY-POST CONN | 04726 | 80-6100-8984-1 |
| MAU338 | 0403-0423 | 1 | BUMPER FOOT-ADH MTG | 02170 | 1572 |
| MBJ510 | 1251-5595 | 1 | POLARIZING KEY-POST CONN | 04726 | 80-6100-8984-1 |
| MBJ611 | 1251-5595 | 1 | POLARIZING KEY-POST CONN | 04726 | 80-6100-8984-1 |
| MBJ1040 | 1251-5595 | 1 | POLARIZING KEY-POST CONN | 04726 | 80-6100-8984-1 |
| MHJ401 | 1818-5621 | 1 | DRAM-SIMM 4MX32 70 NS SIMM FST-PG-M | 28480 | 1818-5621 |
| MP2 | 08711-20011 | 1 | BUMPER-TOP | 28480 | 08711-20011 |
| MP3 | 08711-20011 | 1 | BUMPER-TOP | 28480 | 08711-20011 |
| MP4 | 08711-20012 | 1 | BUMPER-BOTTOM | 28480 | 08711-20012 |
| MP5 | 08711-20012 | 1 | BUMPER-BOTTOM | 28480 | 08711-20012 |
| MP6 | 08712-60044 | 1 | FR CPU SHIELD | 28480 | 08712-60044 |
| MP7 | 08712-00013 | 1 | REAR CPU SHLD | 28480 | 08712-00013 |
| MP8 | 0515-2087 | 1 | SCREW-MACHINE ASSEMBLY M3 X 0.5 6MM-LG | 05610 | |
| MP9 | 0515-2087 | 1 | SCREW-MACHINE ASSEMBLY M3 X 0.5 6MM-LG | 05610 | |
| MP10 | 0515-2087 | 1 | SCREW-MACHINE ASSEMBLY M3 X 0.5 6MM-LG | 05610 | |
| MP11 | 0515-2087 | 1 | SCREW-MACHINE ASSEMBLY M3 X 0.5 6MM-LG | 05610 | |
| MP12 | 0515-2087 | 1 | SCREW-MACHINE ASSEMBLY M3 X 0.5 6MM-LG | 05610 | |

**HP Part Number 08712-60042
CPU (continued)**

| Reference Designator | HP Part Number | Qty | Description | Mfr Code | Mfr Part Number |
|----------------------|----------------|-----|--|----------|-----------------|
| MP13 | 0515-2087 | 1 | SCREW-MACHINE ASSEMBLY M3 X 0.5 6MM-LG | 05610 | |
| MP14 | 0515-2087 | 1 | SCREW-MACHINE ASSEMBLY M3 X 0.5 6MM-LG | 05610 | |
| MP15 | 2190-0068 | 1 | WASHER-LK INTL T 1/2 IN .505-IN-ID | 07606 | 1924-02NP |
| MP16 | 2190-0068 | 1 | WASHER-LK INTL T 1/2 IN .505-IN-ID | 07606 | 1924-02NP |
| MP17 | 2190-0068 | 1 | WASHER-LK INTL T 1/2 IN .505-IN-ID | 07606 | 1924-02NP |
| MP18 | 0590-1310 | 1 | NUT-SPCLY 1/2-28-THD .11-IN-THK .665-WD | 03699 | |
| MP19 | 0590-1310 | 1 | NUT-SPCLY 1/2-28-THD .11-IN-THK .665-WD | 03699 | |
| MP20 | 0590-1310 | 1 | NUT-SPCLY 1/2-28-THD .11-IN-THK .665-WD | 03699 | |
| MP21 | 1251-2942 | 1 | SCREW LOCK KIT-SUBMIN D CONN | 02121 | ST9422-36 |
| MP22 | 1251-2942 | 1 | SCREW LOCK KIT-SUBMIN D CONN | 02121 | ST9422-36 |
| MP23 | 1251-2942 | 1 | SCREW LOCK KIT-SUBMIN D CONN | 02121 | ST9422-36 |
| MP24 | 1251-2942 | 1 | SCREW LOCK KIT-SUBMIN D CONN | 02121 | ST9422-36 |
| MP25 | 1251-2942 | 1 | SCREW LOCK KIT-SUBMIN D CONN | 02121 | ST9422-36 |
| MP26 | 1251-2942 | 1 | SCREW LOCK KIT-SUBMIN D CONN | 02121 | ST9422-36 |
| MP27 | 0380-0643 | 1 | STANDOFF-HEX .255-IN-LG 6-32-THD | 02121 | |
| MP28 | 0380-0643 | 1 | STANDOFF-HEX .255-IN-LG 6-32-THD | 02121 | |
| MP29 | 2190-0586 | 1 | WASHER-LK HLCL 4.0 4.1-MM-ID 7.6-MM-OD | 06691 | A2WASPSR0158 |
| MP30 | 2190-0586 | 1 | WASHER-LK HLCL 4.0 4.1-MM-ID 7.6-MM-OD | 06691 | A2WASPSR0158 |
| MP54 | 8120-5526 | 1 | FLAT-RIBBON-ASSY 28-AWG 20-COND | 04726 | 80610670087 |
| MP55 | 8120-5527 | 1 | FLAT-RIBBON-ASSY 28-AWG 26-COND | 04726 | 80610670095 |
| MP56 | 08712-00014 | 1 | CABLE CLAMP | 28480 | 08712-00014 |
| MP57 | 08712-00014 | 1 | CABLE CLAMP | 28480 | 08712-00014 |
| MP58 | 8160-0915 | 1 | RFI GASKET AG-IMPRG-NYL 8-MM-WD 5-MM-THK | 12085 | E7319T00150 |
| MP59 | 8160-0915 | 1 | RFI GASKET AG-IMPRG-NYL 8-MM-WD 5-MM-THK | 12085 | E7319T00150 |
| MP60 | 0515-0430 | 1 | SCREW-MACHINE ASSEMBLY M3 X 0.5 6MM-LG | 05610 | |
| MP61 | 0515-0430 | 1 | SCREW-MACHINE ASSEMBLY M3 X 0.5 6MM-LG | 05610 | |
| MP62 | 0515-0430 | 1 | SCREW-MACHINE ASSEMBLY M3 X 0.5 6MM-LG | 05610 | |
| MP63 | 0515-0430 | 1 | SCREW-MACHINE ASSEMBLY M3 X 0.5 6MM-LG | 05610 | |
| Q300 | 1854-1037 | 1 | TRANSISTOR NPN SI TO-236AA PD=350MW | 28480 | 1854-1037 |
| R100 | 0699-3943 | 1 | RESISTOR 681 +-1% .063W TKF TC=0+-200 | 28480 | 0699-3943 |
| R101 | 0699-3963 | 1 | RESISTOR 4.64K +-1% .063W TKF TC=0+-200 | 28480 | 0699-3963 |
| R102 | 0699-3963 | 1 | RESISTOR 4.64K +-1% .063W TKF TC=0+-200 | 28480 | 0699-3963 |
| R103 | 1810-1230 | 1 | NETWORK-RES 16-SMD 4.7K OHM X 8 | 28480 | 1810-1230 |
| R104 | 0699-3947 | 1 | RESISTOR 1K +-1% .063W TKF TC=0+-200 | 28480 | 0699-3947 |
| R105 | 0699-3947 | 1 | RESISTOR 1K +-1% .063W TKF TC=0+-200 | 28480 | 0699-3947 |

**Indicates factory-selected value*

HP Part Number 08712-60042
CPU (continued)

| Reference Designator | HP Part Number | Qty | Description | Mfr Code | Mfr Part Number |
|----------------------|----------------|-----|---|----------|-----------------|
| R106 | 0699-3963 | 1 | RESISTOR 4.64K +-1% .063W TKF TC=0+-200 | 28480 | 0699-3963 |
| R111 | 0699-1354 | 1 | RESISTOR 26.1 +-1% .125W TKF TC=0+-100 | 28480 | 0699-1354 |
| R112 | 0699-1354 | 1 | RESISTOR 26.1 +-1% .125W TKF TC=0+-100 | 28480 | 0699-1354 |
| R113 | 0699-1354 | 1 | RESISTOR 26.1 +-1% .125W TKF TC=0+-100 | 28480 | 0699-1354 |
| R115 | 0699-3963 | 1 | RESISTOR 4.64K +-1% .063W TKF TC=0+-200 | 28480 | 0699-3963 |
| R116 | 0699-3963 | 1 | RESISTOR 4.64K +-1% .063W TKF TC=0+-200 | 28480 | 0699-3963 |
| R117 | 0699-3963 | 1 | RESISTOR 4.64K +-1% .063W TKF TC=0+-200 | 28480 | 0699-3963 |
| R118 | 0699-3963 | 1 | RESISTOR 4.64K +-1% .063W TKF TC=0+-200 | 28480 | 0699-3963 |
| R119 | 0699-3963 | 1 | RESISTOR 4.64K +-1% .063W TKF TC=0+-200 | 28480 | 0699-3963 |
| R120 | 0699-3963 | 1 | RESISTOR 4.64K +-1% .063W TKF TC=0+-200 | 28480 | 0699-3963 |
| R121 | 0699-3963 | 1 | RESISTOR 4.64K +-1% .063W TKF TC=0+-200 | 28480 | 0699-3963 |
| R122 | 0699-3963 | 1 | RESISTOR 4.64K +-1% .063W TKF TC=0+-200 | 28480 | 0699-3963 |
| R123 | 0699-3963 | 1 | RESISTOR 4.64K +-1% .063W TKF TC=0+-200 | 28480 | 0699-3963 |
| R125 | 1810-1066 | 1 | NETWORK-RES 16-SMD 33.0 OHM X 8 | 28480 | 1810-1066 |
| R126 | 1810-1066 | 1 | NETWORK-RES 16-SMD 33.0 OHM X 8 | 28480 | 1810-1066 |
| R127 | 1810-1066 | 1 | NETWORK-RES 16-SMD 33.0 OHM X 8 | 28480 | 1810-1066 |
| R128 | 1810-1066 | 1 | NETWORK-RES 16-SMD 33.0 OHM X 8 | 28480 | 1810-1066 |
| R129 | 1810-1066 | 1 | NETWORK-RES 16-SMD 33.0 OHM X 8 | 28480 | 1810-1066 |
| R130 | 1810-1066 | 1 | NETWORK-RES 16-SMD 33.0 OHM X 8 | 28480 | 1810-1066 |
| R131 | 1810-1066 | 1 | NETWORK-RES 16-SMD 33.0 OHM X 8 | 28480 | 1810-1066 |
| R132 | 1810-1066 | 1 | NETWORK-RES 16-SMD 33.0 OHM X 8 | 28480 | 1810-1066 |
| R133 | 1810-1066 | 1 | NETWORK-RES 16-SMD 33.0 OHM X 8 | 28480 | 1810-1066 |
| R134 | 0699-3963 | 1 | RESISTOR 4.64K +-1% .063W TKF TC=0+-200 | 28480 | 0699-3963 |
| R136 | 0699-3947 | 1 | RESISTOR 1K +-1% .063W TKF TC=0+-200 | 28480 | 0699-3947 |
| R137 | 0699-3947 | 1 | RESISTOR 1K +-1% .063W TKF TC=0+-200 | 28480 | 0699-3947 |
| R138 | 0699-3963 | 1 | RESISTOR 4.64K +-1% .063W TKF TC=0+-200 | 28480 | 0699-3963 |
| R139 | 0699-3963 | 1 | RESISTOR 4.64K +-1% .063W TKF TC=0+-200 | 28480 | 0699-3963 |
| R140 | 0699-3947 | 1 | RESISTOR 1K +-1% .063W TKF TC=0+-200 | 28480 | 0699-3947 |
| R141 | 0699-3963 | 1 | RESISTOR 4.64K +-1% .063W TKF TC=0+-200 | 28480 | 0699-3963 |
| R142 | 0699-3963 | 1 | RESISTOR 4.64K +-1% .063W TKF TC=0+-200 | 28480 | 0699-3963 |
| R143 | 0699-3963 | 1 | RESISTOR 4.64K +-1% .063W TKF TC=0+-200 | 28480 | 0699-3963 |
| R180 | 0699-3947 | 1 | RESISTOR 1K +-1% .063W TKF TC=0+-200 | 28480 | 0699-3947 |
| R181 | 0699-1354 | 1 | RESISTOR 26.1 +-1% .125W TKF TC=0+-100 | 28480 | 0699-1354 |
| R182 | 0699-3924 | 1 | RESISTOR 100 +-1% .063W TKF TC=0+-200 | 28480 | 0699-3924 |
| R202 | 0699-3574 | 1 | RESISTOR 0 .0625W TKF | 28480 | 0699-3574 |

**HP Part Number 08712-60042
CPU (continued)**

| Reference Designator | HP Part Number | Qty | Description | Mfr Code | Mfr Part Number |
|----------------------|----------------|-----|---|----------|-----------------|
| R203 | 0699-3936 | 1 | RESISTOR 316 +-1% .063W TKF TC=0+-200 | 28480 | 0699-3936 |
| R205 | 1810-1230 | 1 | NETWORK-RES 16-SMD 4.7K OHM X 8 | 28480 | 1810-1230 |
| R213 | 0699-3574 | 1 | RESISTOR 0 .0625W TKF | 28480 | 0699-3574 |
| R215 | 0699-3933 | 1 | RESISTOR 237 +-1% .063W TKF TC=0+-200 | 28480 | 0699-3933 |
| R216 | 0699-3933 | 1 | RESISTOR 237 +-1% .063W TKF TC=0+-200 | 28480 | 0699-3933 |
| R217 | 0699-3933 | 1 | RESISTOR 237 +-1% .063W TKF TC=0+-200 | 28480 | 0699-3933 |
| R218 | 0699-3933 | 1 | RESISTOR 237 +-1% .063W TKF TC=0+-200 | 28480 | 0699-3933 |
| R219 | 0699-3933 | 1 | RESISTOR 237 +-1% .063W TKF TC=0+-200 | 28480 | 0699-3933 |
| R220 | 0699-3933 | 1 | RESISTOR 237 +-1% .063W TKF TC=0+-200 | 28480 | 0699-3933 |
| R221 | 0699-3933 | 1 | RESISTOR 237 +-1% .063W TKF TC=0+-200 | 28480 | 0699-3933 |
| R222 | 0699-3933 | 1 | RESISTOR 237 +-1% .063W TKF TC=0+-200 | 28480 | 0699-3933 |
| R223 | 0699-3936 | 1 | RESISTOR 316 +-1% .063W TKF TC=0+-200 | 28480 | 0699-3936 |
| R224 | 0699-3936 | 1 | RESISTOR 316 +-1% .063W TKF TC=0+-200 | 28480 | 0699-3936 |
| R238 | 0699-3955 | 1 | RESISTOR 2.15K +-1% .063W TKF TC=0+-200 | 28480 | 0699-3955 |
| R239 | 0699-3954 | 1 | RESISTOR 1.96K +-1% .063W TKF TC=0+-200 | 28480 | 0699-3954 |
| R240 | 0699-3954 | 1 | RESISTOR 1.96K +-1% .063W TKF TC=0+-200 | 28480 | 0699-3954 |
| R241 | 0699-3937 | 1 | RESISTOR 348 +-1% .063W TKF TC=0+-200 | 28480 | 0699-3937 |
| R242 | 0699-3947 | 1 | RESISTOR 1K +-1% .063W TKF TC=0+-200 | 28480 | 0699-3947 |
| R243 | 0699-3963 | 1 | RESISTOR 4.64K +-1% .063W TKF TC=0+-200 | 28480 | 0699-3963 |
| R244 | 0699-3973 | 1 | RESISTOR 13.3K +-1% .063W TKF TC=0+-200 | 28480 | 0699-3973 |
| R245 | 0699-3973 | 1 | RESISTOR 13.3K +-1% .063W TKF TC=0+-200 | 28480 | 0699-3973 |
| R246 | 0699-3947 | 1 | RESISTOR 1K +-1% .063W TKF TC=0+-200 | 28480 | 0699-3947 |
| R247 | 0699-3973 | 1 | RESISTOR 13.3K +-1% .063W TKF TC=0+-200 | 28480 | 0699-3973 |
| R248 | 0699-3943 | 1 | RESISTOR 681 +-1% .063W TKF TC=0+-200 | 28480 | 0699-3943 |
| R249 | 0699-3947 | 1 | RESISTOR 1K +-1% .063W TKF TC=0+-200 | 28480 | 0699-3947 |
| R250 | 0699-3955 | 1 | RESISTOR 2.15K +-1% .063W TKF TC=0+-200 | 28480 | 0699-3955 |
| R251 | 0699-3943 | 1 | RESISTOR 681 +-1% .063W TKF TC=0+-200 | 28480 | 0699-3943 |
| R252 | 0699-3953 | 1 | RESISTOR 1.78K +-1% .063W TKF TC=0+-200 | 28480 | 0699-3953 |
| R253 | 0699-3955 | 1 | RESISTOR 2.15K +-1% .063W TKF TC=0+-200 | 28480 | 0699-3955 |
| R255 | 0699-3947 | 1 | RESISTOR 1K +-1% .063W TKF TC=0+-200 | 28480 | 0699-3947 |
| R256 | 0699-3943 | 1 | RESISTOR 681 +-1% .063W TKF TC=0+-200 | 28480 | 0699-3943 |
| R257 | 0699-3947 | 1 | RESISTOR 1K +-1% .063W TKF TC=0+-200 | 28480 | 0699-3947 |
| R258 | 0699-3954 | 1 | RESISTOR 1.96K +-1% .063W TKF TC=0+-200 | 28480 | 0699-3954 |
| R259 | 0699-3947 | 1 | RESISTOR 1K +-1% .063W TKF TC=0+-200 | 28480 | 0699-3947 |
| R260 | 0699-3957 | 1 | RESISTOR 2.61K +-1% .063W TKF TC=0+-200 | 28480 | 0699-3957 |

**Indicates factory-selected value*

HP Part Number 08712-60042
CPU (continued)

| Reference Designator | HP Part Number | Qty | Description | Mfr Code | Mfr Part Number |
|----------------------|----------------|-----|---|----------|-----------------|
| R261 | 0699-3947 | 1 | RESISTOR 1K +-1% .063W TKF TC=0+-200 | 28480 | 0699-3947 |
| R262 | 0699-3957 | 1 | RESISTOR 2.61K +-1% .063W TKF TC=0+-200 | 28480 | 0699-3957 |
| R300 | 0699-3963 | 1 | RESISTOR 4.64K +-1% .063W TKF TC=0+-200 | 28480 | 0699-3963 |
| R301 | 0699-3963 | 1 | RESISTOR 4.64K +-1% .063W TKF TC=0+-200 | 28480 | 0699-3963 |
| R302 | 0699-3574 | 1 | RESISTOR 0 .0625W TKF | 28480 | 0699-3574 |
| R303 | 0699-3955 | 1 | RESISTOR 2.15K +-1% .063W TKF TC=0+-200 | 28480 | 0699-3955 |
| R308 | 0699-3947 | 1 | RESISTOR 1K +-1% .063W TKF TC=0+-200 | 28480 | 0699-3947 |
| R309 | 0699-3961 | 1 | RESISTOR 3.83K +-1% .063W TKF TC=0+-200 | 28480 | 0699-3961 |
| R310 | 0699-3909 | 1 | RESISTOR 21.5 +-1% .063W TKF TC=0+-200 | 28480 | 0699-3909 |
| R312 | 0699-3947 | 1 | RESISTOR 1K +-1% .063W TKF TC=0+-200 | 28480 | 0699-3947 |
| R315 | 0699-3957 | 1 | RESISTOR 2.61K +-1% .063W TKF TC=0+-200 | 28480 | 0699-3957 |
| R316 | 0699-2831 | 1 | RESISTOR 150 +-0.1% .125W TF TC=0+-25 | 28480 | 0699-2831 |
| R317 | 0699-3367 | 1 | RESISTOR 5.62K +-1% .065W TKF TC=0+-200 | 28480 | 0699-3367 |
| R318 | 0699-2840 | 1 | RESISTOR 2.5K +-0.1% .125W TF TC=0+-25 | 28480 | 0699-2840 |
| R319 | 0699-2840 | 1 | RESISTOR 2.5K +-0.1% .125W TF TC=0+-25 | 28480 | 0699-2840 |
| R400 | 0699-3941 | 1 | RESISTOR 511 +-1% .063W TKF TC=0+-200 | 28480 | 0699-3941 |
| R401 | 0699-3909 | 1 | RESISTOR 21.5 +-1% .063W TKF TC=0+-200 | 28480 | 0699-3909 |
| R402 | 0699-3909 | 1 | RESISTOR 21.5 +-1% .063W TKF TC=0+-200 | 28480 | 0699-3909 |
| R403 | 0699-3909 | 1 | RESISTOR 21.5 +-1% .063W TKF TC=0+-200 | 28480 | 0699-3909 |
| R404 | 0699-3909 | 1 | RESISTOR 21.5 +-1% .063W TKF TC=0+-200 | 28480 | 0699-3909 |
| R409 | 1810-1066 | 1 | NETWORK-RES 16-SMD 33.0 OHM X 8 | 28480 | 1810-1066 |
| R420 | 1810-1128 | 1 | NETWORK-RES 16-SMD 4.7K OHM X 15 | 28480 | 1810-1128 |
| R421 | 0699-3941 | 1 | RESISTOR 511 +-1% .063W TKF TC=0+-200 | 28480 | 0699-3941 |
| R422 | 0699-3941 | 1 | RESISTOR 511 +-1% .063W TKF TC=0+-200 | 28480 | 0699-3941 |
| R423 | 0699-3941 | 1 | RESISTOR 511 +-1% .063W TKF TC=0+-200 | 28480 | 0699-3941 |
| R424 | 0699-3941 | 1 | RESISTOR 511 +-1% .063W TKF TC=0+-200 | 28480 | 0699-3941 |
| R425 | 0699-3941 | 1 | RESISTOR 511 +-1% .063W TKF TC=0+-200 | 28480 | 0699-3941 |
| R426 | 0699-3941 | 1 | RESISTOR 511 +-1% .063W TKF TC=0+-200 | 28480 | 0699-3941 |
| R500 | 0699-3941 | 1 | RESISTOR 511 +-1% .063W TKF TC=0+-200 | 28480 | 0699-3941 |
| R501 | 0699-3941 | 1 | RESISTOR 511 +-1% .063W TKF TC=0+-200 | 28480 | 0699-3941 |
| R502 | 0699-3963 | 1 | RESISTOR 4.64K +-1% .063W TKF TC=0+-200 | 28480 | 0699-3963 |
| R503 | 0699-3963 | 1 | RESISTOR 4.64K +-1% .063W TKF TC=0+-200 | 28480 | 0699-3963 |
| R504 | 0699-3963 | 1 | RESISTOR 4.64K +-1% .063W TKF TC=0+-200 | 28480 | 0699-3963 |
| R505 | 0699-3963 | 1 | RESISTOR 4.64K +-1% .063W TKF TC=0+-200 | 28480 | 0699-3963 |
| R506 | 0699-3963 | 1 | RESISTOR 4.64K +-1% .063W TKF TC=0+-200 | 28480 | 0699-3963 |

**HP Part Number 08712-60042
CPU (continued)**

| Reference Designator | HP Part Number | Qty | Description | Mfr Code | Mfr Part Number |
|----------------------|----------------|-----|---|----------|-----------------|
| R507 | 0699-3963 | 1 | RESISTOR 4.64K +-1% .063W TKF TC=0+-200 | 28480 | 0699-3963 |
| R508 | 0699-3963 | 1 | RESISTOR 4.64K +-1% .063W TKF TC=0+-200 | 28480 | 0699-3963 |
| R509 | 0699-3963 | 1 | RESISTOR 4.64K +-1% .063W TKF TC=0+-200 | 28480 | 0699-3963 |
| R510 | 0699-3970 | 1 | RESISTOR 10K +-1% .063W TKF TC=0+-200 | 28480 | 0699-3970 |
| R511 | 0699-3997 | 1 | RESISTOR 147K +-1% .063W TKF TC=0+-200 | 28480 | 0699-3997 |
| R512 | 0699-3947 | 1 | RESISTOR 1K +-1% .063W TKF TC=0+-200 | 28480 | 0699-3947 |
| R513 | 0699-3955 | 1 | RESISTOR 2.15K +-1% .063W TKF TC=0+-200 | 28480 | 0699-3955 |
| R514 | 0699-3942 | 1 | RESISTOR 619 +-1% .063W TKF TC=0+-200 | 28480 | 0699-3942 |
| R516 | 0699-3941 | 1 | RESISTOR 511 +-1% .063W TKF TC=0+-200 | 28480 | 0699-3941 |
| R517 | 0699-3941 | 1 | RESISTOR 511 +-1% .063W TKF TC=0+-200 | 28480 | 0699-3941 |
| R518 | 0699-3987 | 1 | RESISTOR 51.1K +-1% .063W TKF TC=0+-200 | 28480 | 0699-3987 |
| R519 | 0699-3981 | 1 | RESISTOR 28.7K +-1% .063W TKF TC=0+-200 | 28480 | 0699-3981 |
| R520 | 0699-3973 | 1 | RESISTOR 13.3K +-1% .063W TKF TC=0+-200 | 28480 | 0699-3973 |
| R521 | 0699-3966 | 1 | RESISTOR 6.81K +-1% .063W TKF TC=0+-200 | 28480 | 0699-3966 |
| R522 | 0699-3926 | 1 | RESISTOR 121 +-1% .063W TKF TC=0+-200 | 28480 | 0699-3926 |
| R523 | 0699-3953 | 1 | RESISTOR 1.78K +-1% .063W TKF TC=0+-200 | 28480 | 0699-3953 |
| R524 | 0699-3993 | 1 | RESISTOR 100K +-1% .063W TKF TC=0+-200 | 28480 | 0699-3993 |
| R525 | 0699-2442 | 1 | RESISTOR 2.2 +-5% .125W TKF TC=0+-200 | 28480 | 0699-2442 |
| R527 | 0699-3943 | 1 | RESISTOR 681 +-1% .063W TKF TC=0+-200 | 28480 | 0699-3943 |
| R528 | 0699-3943 | 1 | RESISTOR 681 +-1% .063W TKF TC=0+-200 | 28480 | 0699-3943 |
| R530 | 0699-3943 | 1 | RESISTOR 681 +-1% .063W TKF TC=0+-200 | 28480 | 0699-3943 |
| R532 | 0699-3963 | 1 | RESISTOR 4.64K +-1% .063W TKF TC=0+-200 | 28480 | 0699-3963 |
| R533 | 0699-3963 | 1 | RESISTOR 4.64K +-1% .063W TKF TC=0+-200 | 28480 | 0699-3963 |
| R534 | 0699-3963 | 1 | RESISTOR 4.64K +-1% .063W TKF TC=0+-200 | 28480 | 0699-3963 |
| R601 | 0699-3963 | 1 | RESISTOR 4.64K +-1% .063W TKF TC=0+-200 | 28480 | 0699-3963 |
| R602 | 1810-1066 | 1 | NETWORK-RES 16-SMD 33.0 OHM X 8 | 28480 | 1810-1066 |
| R603 | 0699-3963 | 1 | RESISTOR 4.64K +-1% .063W TKF TC=0+-200 | 28480 | 0699-3963 |
| R604 | 0699-3955 | 1 | RESISTOR 2.15K +-1% .063W TKF TC=0+-200 | 28480 | 0699-3955 |
| R605 | 0699-1318 | 1 | RESISTOR 1K +-1% .125W TKF TC=0+-100 | 28480 | 0699-1318 |
| R606 | 0699-3963 | 1 | RESISTOR 4.64K +-1% .063W TKF TC=0+-200 | 28480 | 0699-3963 |
| R607 | 0699-3963 | 1 | RESISTOR 4.64K +-1% .063W TKF TC=0+-200 | 28480 | 0699-3963 |
| R609 | 0699-1318 | 1 | RESISTOR 1K +-1% .125W TKF TC=0+-100 | 28480 | 0699-1318 |
| R610 | 0699-3955 | 1 | RESISTOR 2.15K +-1% .063W TKF TC=0+-200 | 28480 | 0699-3955 |
| R611 | 0699-3955 | 1 | RESISTOR 2.15K +-1% .063W TKF TC=0+-200 | 28480 | 0699-3955 |
| R612 | 0699-3955 | 1 | RESISTOR 2.15K +-1% .063W TKF TC=0+-200 | 28480 | 0699-3955 |

**Indicates factory-selected value*

**HP Part Number 08712-60042
CPU (continued)**

| Reference Designator | HP Part Number | Qty | Description | Mfr Code | Mfr Part Number |
|----------------------|----------------|-----|---|----------|-----------------|
| R613 | 0699-3955 | 1 | RESISTOR 2.15K +-1% .063W TKF TC=0+-200 | 28480 | 0699-3955 |
| R614 | 0699-3947 | 1 | RESISTOR 1K +-1% .063W TKF TC=0+-200 | 28480 | 0699-3947 |
| R615 | 0699-3941 | 1 | RESISTOR 511 +-1% .063W TKF TC=0+-200 | 28480 | 0699-3941 |
| R616 | 0699-3911 | 1 | RESISTOR 26.1 +-1% .063W TKF TC=0+-200 | 28480 | 0699-3911 |
| R617 | 0699-3963 | 1 | RESISTOR 4.64K +-1% .063W TKF TC=0+-200 | 28480 | 0699-3963 |
| R618 | 0699-3963 | 1 | RESISTOR 4.64K +-1% .063W TKF TC=0+-200 | 28480 | 0699-3963 |
| R619 | 0699-3963 | 1 | RESISTOR 4.64K +-1% .063W TKF TC=0+-200 | 28480 | 0699-3963 |
| R620 | 0699-3970 | 1 | RESISTOR 10K +-1% .063W TKF TC=0+-200 | 28480 | 0699-3970 |
| R621 | 0699-3963 | 1 | RESISTOR 4.64K +-1% .063W TKF TC=0+-200 | 28480 | 0699-3963 |
| R623 | 0699-3963 | 1 | RESISTOR 4.64K +-1% .063W TKF TC=0+-200 | 28480 | 0699-3963 |
| R624 | 0699-3963 | 1 | RESISTOR 4.64K +-1% .063W TKF TC=0+-200 | 28480 | 0699-3963 |
| R625 | 0699-3963 | 1 | RESISTOR 4.64K +-1% .063W TKF TC=0+-200 | 28480 | 0699-3963 |
| R626 | 0699-3963 | 1 | RESISTOR 4.64K +-1% .063W TKF TC=0+-200 | 28480 | 0699-3963 |
| R627 | 0699-3963 | 1 | RESISTOR 4.64K +-1% .063W TKF TC=0+-200 | 28480 | 0699-3963 |
| R628 | 0699-3970 | 1 | RESISTOR 10K +-1% .063W TKF TC=0+-200 | 28480 | 0699-3970 |
| R629 | 0699-3574 | 1 | RESISTOR 0 .0625W TKF | 28480 | 0699-3574 |
| R630 | 1810-1128 | 1 | NETWORK-RES 16-SMD 4.7K OHM X 15 | 28480 | 1810-1128 |
| R631 | 1810-1066 | 1 | NETWORK-RES 16-SMD 33.0 OHM X 8 | 28480 | 1810-1066 |
| R632 | 0699-3914 | 1 | RESISTOR 34.8 +-1% .063W TKF TC=0+-200 | 28480 | 0699-3914 |
| R633 | 1810-1066 | 1 | NETWORK-RES 16-SMD 33.0 OHM X 8 | 28480 | 1810-1066 |
| R634 | 0699-3947 | 1 | RESISTOR 1K +-1% .063W TKF TC=0+-200 | 28480 | 0699-3947 |
| R650 | 0699-3963 | 1 | RESISTOR 4.64K +-1% .063W TKF TC=0+-200 | 28480 | 0699-3963 |
| R651 | 0699-3955 | 1 | RESISTOR 2.15K +-1% .063W TKF TC=0+-200 | 28480 | 0699-3955 |
| R652 | 0699-3921 | 1 | RESISTOR 75 +-1% .063W TKF TC=0+-200 | 28480 | 0699-3921 |
| R653 | 0699-3921 | 1 | RESISTOR 75 +-1% .063W TKF TC=0+-200 | 28480 | 0699-3921 |
| R654 | 0699-3921 | 1 | RESISTOR 75 +-1% .063W TKF TC=0+-200 | 28480 | 0699-3921 |
| R655 | 0699-3921 | 1 | RESISTOR 75 +-1% .063W TKF TC=0+-200 | 28480 | 0699-3921 |
| R656 | 0699-3921 | 1 | RESISTOR 75 +-1% .063W TKF TC=0+-200 | 28480 | 0699-3921 |
| R657 | 0699-3955 | 1 | RESISTOR 2.15K +-1% .063W TKF TC=0+-200 | 28480 | 0699-3955 |
| R700 | 0699-3977 | 1 | RESISTOR 19.6K +-1% .063W TKF TC=0+-200 | 28480 | 0699-3977 |
| R701 | 0699-3963 | 1 | RESISTOR 4.64K +-1% .063W TKF TC=0+-200 | 28480 | 0699-3963 |
| R702 | 1810-1128 | 1 | NETWORK-RES 16-SMD 4.7K OHM X 15 | 28480 | 1810-1128 |
| R703 | 0699-3936 | 1 | RESISTOR 316 +-1% .063W TKF TC=0+-200 | 28480 | 0699-3936 |
| R704 | 1810-1066 | 1 | NETWORK-RES 16-SMD 33.0 OHM X 8 | 28480 | 1810-1066 |
| R705 | 1810-1066 | 1 | NETWORK-RES 16-SMD 33.0 OHM X 8 | 28480 | 1810-1066 |

**HP Part Number 08712-60042
CPU (continued)**

| Reference Designator | HP Part Number | Qty | Description | Mfr Code | Mfr Part Number |
|----------------------|----------------|-----|---|----------|-----------------|
| R706 | 1810-1066 | 1 | NETWORK-RES 16-SMD 33.0 OHM X 8 | 28480 | 1810-1066 |
| R707 | 1810-1066 | 1 | NETWORK-RES 16-SMD 33.0 OHM X 8 | 28480 | 1810-1066 |
| R708 | 0699-3909 | 1 | RESISTOR 21.5 +-1% .063W TKF TC=0+-200 | 28480 | 0699-3909 |
| R709 | 1810-1066 | 1 | NETWORK-RES 16-SMD 33.0 OHM X 8 | 28480 | 1810-1066 |
| R710 | 0699-3918 | 1 | RESISTOR 51.1 +-1% .063W TKF TC=0+-200 | 28480 | 0699-3918 |
| R711 | 1810-1066 | 1 | NETWORK-RES 16-SMD 33.0 OHM X 8 | 28480 | 1810-1066 |
| R712 | 1810-1066 | 1 | NETWORK-RES 16-SMD 33.0 OHM X 8 | 28480 | 1810-1066 |
| R713 | 1810-1066 | 1 | NETWORK-RES 16-SMD 33.0 OHM X 8 | 28480 | 1810-1066 |
| R714 | 0699-3924 | 1 | RESISTOR 100 +-1% .063W TKF TC=0+-200 | 28480 | 0699-3924 |
| R715 | 0699-3924 | 1 | RESISTOR 100 +-1% .063W TKF TC=0+-200 | 28480 | 0699-3924 |
| R716 | 0699-3924 | 1 | RESISTOR 100 +-1% .063W TKF TC=0+-200 | 28480 | 0699-3924 |
| R717 | 0699-3977 | 1 | RESISTOR 19.6K +-1% .063W TKF TC=0+-200 | 28480 | 0699-3977 |
| R718 | 0699-3918 | 1 | RESISTOR 51.1 +-1% .063W TKF TC=0+-200 | 28480 | 0699-3918 |
| R719 | 0699-3911 | 1 | RESISTOR 26.1 +-1% .063W TKF TC=0+-200 | 28480 | 0699-3911 |
| R720 | 0699-3909 | 1 | RESISTOR 21.5 +-1% .063W TKF TC=0+-200 | 28480 | 0699-3909 |
| R721 | 0699-3977 | 1 | RESISTOR 19.6K +-1% .063W TKF TC=0+-200 | 28480 | 0699-3977 |
| R722 | 0699-3941 | 1 | RESISTOR 511 +-1% .063W TKF TC=0+-200 | 28480 | 0699-3941 |
| R723 | 0699-3941 | 1 | RESISTOR 511 +-1% .063W TKF TC=0+-200 | 28480 | 0699-3941 |
| R724 | 0699-3941 | 1 | RESISTOR 511 +-1% .063W TKF TC=0+-200 | 28480 | 0699-3941 |
| R725 | 0699-3941 | 1 | RESISTOR 511 +-1% .063W TKF TC=0+-200 | 28480 | 0699-3941 |
| R726 | 0699-3941 | 1 | RESISTOR 511 +-1% .063W TKF TC=0+-200 | 28480 | 0699-3941 |
| R727 | 0699-3941 | 1 | RESISTOR 511 +-1% .063W TKF TC=0+-200 | 28480 | 0699-3941 |
| R728 | 0699-3941 | 1 | RESISTOR 511 +-1% .063W TKF TC=0+-200 | 28480 | 0699-3941 |
| R729 | 0699-3963 | 1 | RESISTOR 4.64K +-1% .063W TKF TC=0+-200 | 28480 | 0699-3963 |
| R730 | 0699-3941 | 1 | RESISTOR 511 +-1% .063W TKF TC=0+-200 | 28480 | 0699-3941 |
| R800 | 0699-3941 | 1 | RESISTOR 511 +-1% .063W TKF TC=0+-200 | 28480 | 0699-3941 |
| R801 | 0699-3941 | 1 | RESISTOR 511 +-1% .063W TKF TC=0+-200 | 28480 | 0699-3941 |
| R802 | 0699-3941 | 1 | RESISTOR 511 +-1% .063W TKF TC=0+-200 | 28480 | 0699-3941 |
| R804 | 0699-3955 | 1 | RESISTOR 2.15K +-1% .063W TKF TC=0+-200 | 28480 | 0699-3955 |
| R805 | 0699-3911 | 1 | RESISTOR 26.1 +-1% .063W TKF TC=0+-200 | 28480 | 0699-3911 |
| R806 | 0699-3911 | 1 | RESISTOR 26.1 +-1% .063W TKF TC=0+-200 | 28480 | 0699-3911 |
| R807 | 0699-3911 | 1 | RESISTOR 26.1 +-1% .063W TKF TC=0+-200 | 28480 | 0699-3911 |
| R808 | 0699-3943 | 1 | RESISTOR 681 +-1% .063W TKF TC=0+-200 | 28480 | 0699-3943 |
| R809 | 0699-3978 | 1 | RESISTOR 21.5K +-1% .063W TKF TC=0+-200 | 28480 | 0699-3978 |
| R810 | 0699-3978 | 1 | RESISTOR 21.5K +-1% .063W TKF TC=0+-200 | 28480 | 0699-3978 |

**Indicates factory-selected value*

**HP Part Number 08712-60042
CPU (continued)**

| Reference Designator | HP Part Number | Qty | Description | Mfr Code | Mfr Part Number |
|----------------------|----------------|-----|---|----------|-----------------|
| R811 | 0699-3978 | 1 | RESISTOR 21.5K +-1% .063W TKF TC=0+-200 | 28480 | 0699-3978 |
| R812 | 0699-3978 | 1 | RESISTOR 21.5K +-1% .063W TKF TC=0+-200 | 28480 | 0699-3978 |
| R813 | 0699-3978 | 1 | RESISTOR 21.5K +-1% .063W TKF TC=0+-200 | 28480 | 0699-3978 |
| R814 | 0699-3978 | 1 | RESISTOR 21.5K +-1% .063W TKF TC=0+-200 | 28480 | 0699-3978 |
| R815 | 0699-3978 | 1 | RESISTOR 21.5K +-1% .063W TKF TC=0+-200 | 28480 | 0699-3978 |
| R816 | 0699-3978 | 1 | RESISTOR 21.5K +-1% .063W TKF TC=0+-200 | 28480 | 0699-3978 |
| R817 | 0699-3978 | 1 | RESISTOR 21.5K +-1% .063W TKF TC=0+-200 | 28480 | 0699-3978 |
| R818 | 0699-3978 | 1 | RESISTOR 21.5K +-1% .063W TKF TC=0+-200 | 28480 | 0699-3978 |
| R819 | 0699-3978 | 1 | RESISTOR 21.5K +-1% .063W TKF TC=0+-200 | 28480 | 0699-3978 |
| R820 | 0699-3978 | 1 | RESISTOR 21.5K +-1% .063W TKF TC=0+-200 | 28480 | 0699-3978 |
| R821 | 0699-3978 | 1 | RESISTOR 21.5K +-1% .063W TKF TC=0+-200 | 28480 | 0699-3978 |
| R822 | 0699-3978 | 1 | RESISTOR 21.5K +-1% .063W TKF TC=0+-200 | 28480 | 0699-3978 |
| R823 | 0699-3978 | 1 | RESISTOR 21.5K +-1% .063W TKF TC=0+-200 | 28480 | 0699-3978 |
| R824 | 0699-3978 | 1 | RESISTOR 21.5K +-1% .063W TKF TC=0+-200 | 28480 | 0699-3978 |
| R830 | 0699-3936 | 1 | RESISTOR 316 +-1% .063W TKF TC=0+-200 | 28480 | 0699-3936 |
| R831 | 0699-3913 | 1 | RESISTOR 31.6 +-1% .063W TKF TC=0+-200 | 28480 | 0699-3913 |
| R832 | 0699-3913 | 1 | RESISTOR 31.6 +-1% .063W TKF TC=0+-200 | 28480 | 0699-3913 |
| R900 | 0699-3941 | 1 | RESISTOR 511 +-1% .063W TKF TC=0+-200 | 28480 | 0699-3941 |
| R901 | 0699-3963 | 1 | RESISTOR 4.64K +-1% .063W TKF TC=0+-200 | 28480 | 0699-3963 |
| R902 | 0699-3963 | 1 | RESISTOR 4.64K +-1% .063W TKF TC=0+-200 | 28480 | 0699-3963 |
| R903 | 0699-3963 | 1 | RESISTOR 4.64K +-1% .063W TKF TC=0+-200 | 28480 | 0699-3963 |
| R904 | 0699-3963 | 1 | RESISTOR 4.64K +-1% .063W TKF TC=0+-200 | 28480 | 0699-3963 |
| R905 | 0699-3963 | 1 | RESISTOR 4.64K +-1% .063W TKF TC=0+-200 | 28480 | 0699-3963 |
| R906 | 0699-3911 | 1 | RESISTOR 26.1 +-1% .063W TKF TC=0+-200 | 28480 | 0699-3911 |
| R907 | 0699-3911 | 1 | RESISTOR 26.1 +-1% .063W TKF TC=0+-200 | 28480 | 0699-3911 |
| R908 | 1810-1066 | 1 | NETWORK-RES 16-SMD 33.0 OHM X 8 | 28480 | 1810-1066 |
| R909 | 1810-1066 | 1 | NETWORK-RES 16-SMD 33.0 OHM X 8 | 28480 | 1810-1066 |
| R910 | 1810-1066 | 1 | NETWORK-RES 16-SMD 33.0 OHM X 8 | 28480 | 1810-1066 |
| R911 | 0699-3911 | 1 | RESISTOR 26.1 +-1% .063W TKF TC=0+-200 | 28480 | 0699-3911 |
| R912 | 0699-3911 | 1 | RESISTOR 26.1 +-1% .063W TKF TC=0+-200 | 28480 | 0699-3911 |
| R915 | 0699-3941 | 1 | RESISTOR 511 +-1% .063W TKF TC=0+-200 | 28480 | 0699-3941 |
| R916 | 0699-3941 | 1 | RESISTOR 511 +-1% .063W TKF TC=0+-200 | 28480 | 0699-3941 |
| R918 | 0699-3941 | 1 | RESISTOR 511 +-1% .063W TKF TC=0+-200 | 28480 | 0699-3941 |
| R919 | 0699-3941 | 1 | RESISTOR 511 +-1% .063W TKF TC=0+-200 | 28480 | 0699-3941 |
| R920 | 0699-3911 | 1 | RESISTOR 26.1 +-1% .063W TKF TC=0+-200 | 28480 | 0699-3911 |

**HP Part Number 08712-60042
CPU (continued)**

| Reference Designator | HP Part Number | Qty | Description | Mfr Code | Mfr Part Number |
|----------------------|----------------|-----|---|----------|-----------------|
| R921 | 0699-3911 | 1 | RESISTOR 26.1 +-1% .063W TKF TC=0+-200 | 28480 | 0699-3911 |
| R922 | 0699-3911 | 1 | RESISTOR 26.1 +-1% .063W TKF TC=0+-200 | 28480 | 0699-3911 |
| R923 | 0699-3941 | 1 | RESISTOR 511 +-1% .063W TKF TC=0+-200 | 28480 | 0699-3941 |
| R924 | 1810-1066 | 1 | NETWORK-RES 16-SMD 33.0 OHM X 8 | 28480 | 1810-1066 |
| R926 | 0699-3936 | 1 | RESISTOR 316 +-1% .063W TKF TC=0+-200 | 28480 | 0699-3936 |
| R927 | 0699-3941 | 1 | RESISTOR 511 +-1% .063W TKF TC=0+-200 | 28480 | 0699-3941 |
| R929 | 0699-3941 | 1 | RESISTOR 511 +-1% .063W TKF TC=0+-200 | 28480 | 0699-3941 |
| R930 | 0699-3941 | 1 | RESISTOR 511 +-1% .063W TKF TC=0+-200 | 28480 | 0699-3941 |
| R931 | 1810-1066 | 1 | NETWORK-RES 16-SMD 33.0 OHM X 8 | 28480 | 1810-1066 |
| R932 | 1810-1066 | 1 | NETWORK-RES 16-SMD 33.0 OHM X 8 | 28480 | 1810-1066 |
| R940 | 0699-3947 | 1 | RESISTOR 1K +-1% .063W TKF TC=0+-200 | 28480 | 0699-3947 |
| R1001 | 0699-3964 | 1 | RESISTOR 5.11K +-1% .063W TKF TC=0+-200 | 28480 | 0699-3964 |
| R1003 | 0699-3914 | 1 | RESISTOR 34.8 +-1% .063W TKF TC=0+-200 | 28480 | 0699-3914 |
| R1004 | 0699-3961 | 1 | RESISTOR 3.83K +-1% .063W TKF TC=0+-200 | 28480 | 0699-3961 |
| R1005 | 0699-3954 | 1 | RESISTOR 1.96K +-1% .063W TKF TC=0+-200 | 28480 | 0699-3954 |
| R1006 | 0699-3947 | 1 | RESISTOR 1K +-1% .063W TKF TC=0+-200 | 28480 | 0699-3947 |
| R1007 | 0699-3940 | 1 | RESISTOR 464 +-1% .063W TKF TC=0+-200 | 28480 | 0699-3940 |
| R1008 | 0699-3914 | 1 | RESISTOR 34.8 +-1% .063W TKF TC=0+-200 | 28480 | 0699-3914 |
| R1009 | 0699-3925 | 1 | RESISTOR 110 +-1% .063W TKF TC=0+-200 | 28480 | 0699-3925 |
| R1010 | 0699-3919 | 1 | RESISTOR 61.9 +-1% .063W TKF TC=0+-200 | 28480 | 0699-3919 |
| R1011 | 0699-3919 | 1 | RESISTOR 61.9 +-1% .063W TKF TC=0+-200 | 28480 | 0699-3919 |
| R1014 | 0699-3574 | 1 | RESISTOR 0 .0625W TKF | 28480 | 0699-3574 |
| R1015 | 0699-3366 | 1 | RESISTOR 562 +-1% .065W TKF TC=0+-200 | 28480 | 0699-3366 |
| R1016 | 0699-3921 | 1 | RESISTOR 75 +-1% .063W TKF TC=0+-200 | 28480 | 0699-3921 |
| R1017 | 0699-3921 | 1 | RESISTOR 75 +-1% .063W TKF TC=0+-200 | 28480 | 0699-3921 |
| R1018 | 0699-3921 | 1 | RESISTOR 75 +-1% .063W TKF TC=0+-200 | 28480 | 0699-3921 |
| R1019 | 0699-3919 | 1 | RESISTOR 61.9 +-1% .063W TKF TC=0+-200 | 28480 | 0699-3919 |
| R1020 | 0699-3919 | 1 | RESISTOR 61.9 +-1% .063W TKF TC=0+-200 | 28480 | 0699-3919 |
| R1030 | 0699-3911 | 1 | RESISTOR 26.1 +-1% .063W TKF TC=0+-200 | 28480 | 0699-3911 |
| R1031 | 0699-3911 | 1 | RESISTOR 26.1 +-1% .063W TKF TC=0+-200 | 28480 | 0699-3911 |
| R1032 | 0699-3911 | 1 | RESISTOR 26.1 +-1% .063W TKF TC=0+-200 | 28480 | 0699-3911 |
| R1033 | 0699-3911 | 1 | RESISTOR 26.1 +-1% .063W TKF TC=0+-200 | 28480 | 0699-3911 |
| R1034 | 0699-3911 | 1 | RESISTOR 26.1 +-1% .063W TKF TC=0+-200 | 28480 | 0699-3911 |
| R1035 | 0699-3911 | 1 | RESISTOR 26.1 +-1% .063W TKF TC=0+-200 | 28480 | 0699-3911 |
| R1036 | 0699-3963 | 1 | RESISTOR 4.64K +-1% .063W TKF TC=0+-200 | 28480 | 0699-3963 |

**Indicates factory-selected value*

**HP Part Number 08712-60042
CPU (continued)**

| Reference Designator | HP Part Number | Qty | Description | Mfr Code | Mfr Part Number |
|----------------------|----------------|-----|--|----------|-----------------|
| R1040 | 0699-3911 | 1 | RESISTOR 26.1 +-1% .063W TKF TC=0+-200 | 28480 | 0699-3911 |
| R1041 | 0699-3936 | 1 | RESISTOR 316 +-1% .063W TKF TC=0+-200 | 28480 | 0699-3936 |
| R1042 | 0699-3936 | 1 | RESISTOR 316 +-1% .063W TKF TC=0+-200 | 28480 | 0699-3936 |
| R1043 | 0699-3936 | 1 | RESISTOR 316 +-1% .063W TKF TC=0+-200 | 28480 | 0699-3936 |
| R1044 | 0699-3936 | 1 | RESISTOR 316 +-1% .063W TKF TC=0+-200 | 28480 | 0699-3936 |
| R1045 | 0699-3936 | 1 | RESISTOR 316 +-1% .063W TKF TC=0+-200 | 28480 | 0699-3936 |
| R1046 | 0699-3947 | 1 | RESISTOR 1K +-1% .063W TKF TC=0+-200 | 28480 | 0699-3947 |
| R1047 | 0699-3947 | 1 | RESISTOR 1K +-1% .063W TKF TC=0+-200 | 28480 | 0699-3947 |
| R1048 | 0699-3365 | 1 | RESISTOR 56.2 +-1% .065W TKF TC=0+-200 | 28480 | 0699-3365 |
| R1049 | 0699-3365 | 1 | RESISTOR 56.2 +-1% .065W TKF TC=0+-200 | 28480 | 0699-3365 |
| R1050 | 0699-3937 | 1 | RESISTOR 348 +-1% .063W TKF TC=0+-200 | 28480 | 0699-3937 |
| R1051 | 0699-3937 | 1 | RESISTOR 348 +-1% .063W TKF TC=0+-200 | 28480 | 0699-3937 |
| R1052 | 0699-3945 | 1 | RESISTOR 825 +-1% .063W TKF TC=0+-200 | 28480 | 0699-3945 |
| R1053 | 0699-3918 | 1 | RESISTOR 51.1 +-1% .063W TKF TC=0+-200 | 28480 | 0699-3918 |
| R1054 | 0699-3918 | 1 | RESISTOR 51.1 +-1% .063W TKF TC=0+-200 | 28480 | 0699-3918 |
| R1060 | 0699-3909 | 1 | RESISTOR 21.5 +-1% .063W TKF TC=0+-200 | 28480 | 0699-3909 |
| R1061 | 0699-3947 | 1 | RESISTOR 1K +-1% .063W TKF TC=0+-200 | 28480 | 0699-3947 |
| R1062 | 0699-3947 | 1 | RESISTOR 1K +-1% .063W TKF TC=0+-200 | 28480 | 0699-3947 |
| R1066 | 0699-3936 | 1 | RESISTOR 316 +-1% .063W TKF TC=0+-200 | 28480 | 0699-3936 |
| R1070 | 0699-3947 | 1 | RESISTOR 1K +-1% .063W TKF TC=0+-200 | 28480 | 0699-3947 |
| R1071 | 0699-3947 | 1 | RESISTOR 1K +-1% .063W TKF TC=0+-200 | 28480 | 0699-3947 |
| R1081 | 0699-3941 | 1 | RESISTOR 511 +-1% .063W TKF TC=0+-200 | 28480 | 0699-3941 |
| R1099 | 0699-3941 | 1 | RESISTOR 511 +-1% .063W TKF TC=0+-200 | 28480 | 0699-3941 |
| RT601 | 0837-0439 | 1 | THERMISTOR-SWITCHING CHIP; SMT; MIN/MAX | 02145 | SMD150 |
| S201 | 3101-2935 | 1 | SWITCH-DIP SURF-MT-SL SPST 0.05A 6VDC | 28480 | 3101-2935 |
| TP201 | 1251-0600 | 1 | CONNECTOR-SGL CONT PIN 1.14-MM-BSC-SZ SQ | 03418 | 16-06-0034 |
| TP204 | 1251-0600 | 1 | CONNECTOR-SGL CONT PIN 1.14-MM-BSC-SZ SQ | 03418 | 16-06-0034 |
| TP206 | 1251-0600 | 1 | CONNECTOR-SGL CONT PIN 1.14-MM-BSC-SZ SQ | 03418 | 16-06-0034 |
| TP209 | 1251-0600 | 1 | CONNECTOR-SGL CONT PIN 1.14-MM-BSC-SZ SQ | 03418 | 16-06-0034 |
| TP212 | 1251-0600 | 1 | CONNECTOR-SGL CONT PIN 1.14-MM-BSC-SZ SQ | 03418 | 16-06-0034 |
| U100 | 1820-4364 | 1 | IC GATE TTL/F AND QUAD 2-INP | 28480 | 1820-4364 |
| U101 | 1826-1897 | 1 | IC PWR MGT-VS-SUPVR/CONT | 28480 | 1826-1897 |
| U102 | 1820-4998 | 1 | IC GATE TTL/F OR QUAD 2-INP | 28480 | 1820-4998 |
| U103 | 1820-4364 | 1 | IC GATE TTL/F AND QUAD 2-INP | 28480 | 1820-4364 |
| U105 | 1813-0710 | 1 | CLK-OSC-XTAL STD 24.0-MHZ 0.01% | 28480 | 1813-0710 |

**HP Part Number 08712-60042
CPU (continued)**

| Reference Designator | HP Part Number | Qty | Description | Mfr Code | Mfr Part Number |
|----------------------|----------------|-----|--|----------|-----------------|
| U106 | 1820-5870 | 1 | IC INV TTL/F HEX | 02237 | 74F04SCX. |
| U109 | 1820-5800 | 1 | IC GATE TTL/F NAND 8-INP | 28480 | 1820-5800 |
| U110 | 1820-6850 | 1 | IC ENCDR TTL/F PRIORITY 8-TO-3-LINE | 28480 | 1820-6850 |
| U112 | 1820-6500 | 1 | IC-IEEE FLOATING PONIT COPROCESSOR 25MHZ | 28480 | 1820-6500 |
| U115 | 1821-1650 | 1 | IC-ENHANCED; EMBEDDED CONTROLLER | 28480 | 1821-1650 |
| U116 | 1820-4377 | 1 | IC GATE TTL/F NAND QUAD 2-INP | 28480 | 1820-4377 |
| U118 | 1820-4790 | 1 | IC TRANSCEIVER TTL/ALS BUS OCTL | 28480 | 1820-4790 |
| U119 | 1820-5050 | 1 | IC FF TTL/F D-TYPE POS-EDGE-TRIG COM | 28480 | 1820-5050 |
| U121 | 1820-4934 | 1 | IC CNTR TTL/ALS BIN SYNC/ASYN | 28480 | 1820-4934 |
| U122 | 08712-80030 | 1 | PAL U122 | 28480 | 08712-80030 |
| U124 | 1820-5130 | 1 | IC DCDR-DEMUXR TTL/F BIN 8-TO-1-LINE | 28480 | 1820-5130 |
| U125 | 1820-5130 | 1 | IC DCDR-DEMUXR TTL/F BIN 8-TO-1-LINE | 28480 | 1820-5130 |
| U126 | 1820-5130 | 1 | IC DCDR-DEMUXR TTL/F BIN 8-TO-1-LINE | 28480 | 1820-5130 |
| U127 | 1820-5130 | 1 | IC DCDR-DEMUXR TTL/F BIN 8-TO-1-LINE | 28480 | 1820-5130 |
| U128 | 1820-5130 | 1 | IC DCDR-DEMUXR TTL/F BIN 8-TO-1-LINE | 28480 | 1820-5130 |
| U130 | 1820-4998 | 1 | IC GATE TTL/F OR QUAD 2-INP | 28480 | 1820-4998 |
| U133 | 1820-5130 | 1 | IC DCDR-DEMUXR TTL/F BIN 8-TO-1-LINE | 28480 | 1820-5130 |
| U135 | 1820-5870 | 1 | IC INV TTL/F HEX | 02237 | 74F04SCX. |
| U136 | 1820-4364 | 1 | IC GATE TTL/F AND QUAD 2-INP | 28480 | 1820-4364 |
| U201 | 1820-4788 | 1 | IC DRVR TTL/ALS BUS OCTL | 28480 | 1820-4788 |
| U202 | 1820-6141 | 1 | IC MUXR/DATA-SEL TTL/F 8-TO-1-LINE | 28480 | 1820-6141 |
| U203 | 1820-6141 | 1 | IC MUXR/DATA-SEL TTL/F 8-TO-1-LINE | 28480 | 1820-6141 |
| U204 | 1820-4264 | 1 | IC LCH TTL/ALS TRANSPARENT OCTL | 28480 | 1820-4264 |
| U205 | 1820-4998 | 1 | IC GATE TTL/F OR QUAD 2-INP | 28480 | 1820-4998 |
| U208 | 1820-4263 | 1 | IC LCH TTL/ALS ADDRESSABLE 8-BIT | 28480 | 1820-4263 |
| U209 | 1820-4263 | 1 | IC LCH TTL/ALS ADDRESSABLE 8-BIT | 28480 | 1820-4263 |
| U210 | 1820-4263 | 1 | IC LCH TTL/ALS ADDRESSABLE 8-BIT | 28480 | 1820-4263 |
| U211 | 1820-4263 | 1 | IC LCH TTL/ALS ADDRESSABLE 8-BIT | 28480 | 1820-4263 |
| U215 | 1820-4259 | 1 | IC MUXR/DATA-SEL TTL/ALS 8-TO-1-LINE | 28480 | 1820-4259 |
| U218 | 1820-5475 | 1 | IC FF CMOS/HCT D-TYPE POS-EDGE-TRIG COM | 28480 | 1820-5475 |
| U219 | 1820-4861 | 1 | IC BFR TTL/F NAND QUAD 2-INP | 28480 | 1820-4861 |
| U220 | 1990-0918 | 1 | DISPLAY-NUM-SEG 1-CHAR .3-H RED | 28480 | 1990-0918 |
| U222 | 1826-1810 | 1 | IC OP AMP LOW-BIAS-H-IMPD SINGLE 8 PIN | 28480 | 1826-1810 |
| U223 | 1826-2438 | 1 | A/D 8-BIT 28-PLCC CMOS | 28480 | 1826-2438 |
| U225 | 1826-2261 | 1 | IC TEMP XDRC PRN SINGLE 8 PIN | 28480 | 1826-2261 |

**Indicates factory-selected value*

**HP Part Number 08712-60042
CPU (continued)**

| Reference Designator | HP Part Number | Qty | Description | Mfr Code | Mfr Part Number |
|----------------------|----------------|-----|--|----------|-----------------|
| U300 | 1820-5870 | 1 | IC INV TTL/F HEX | 02237 | 74F04SCX. |
| U301 | 08712-80019 | 1 | PAL U301 | 28480 | 08712-80019 |
| U302 | 1818-5530 | 1 | IC 8M-BIT FLASH 85-NS CMOS | 28480 | 1818-5530 |
| U303 | 1818-5530 | 1 | IC 8M-BIT FLASH 85-NS CMOS | 28480 | 1818-5530 |
| U304 | 1818-5530 | 1 | IC 8M-BIT FLASH 85-NS CMOS | 28480 | 1818-5530 |
| U305 | 1818-5530 | 1 | IC 8M-BIT FLASH 85-NS CMOS | 28480 | 1818-5530 |
| U306 | 1820-4998 | 1 | IC GATE TTL/F OR QUAD 2-INP | 28480 | 1820-4998 |
| U325 | 1826-1402 | 1 | IC PWR MGT-V-REG-FXD-POS 4.8/5.2V 8 PINS | 28480 | 1826-1402 |
| U327 | 1820-8894 | 1 | IC-NONVOLATILE CONTROLLER CHIP | 28480 | 1820-8894 |
| U328 | 1820-5130 | 1 | IC DCDR-DEMUXR TTL/F BIN 8-TO-1-LINE | 28480 | 1820-5130 |
| U329 | 1818-5651 | 1 | IC 4M-BIT SRAM 70-NS CMOS | 28480 | 1818-5651 |
| U330 | 1818-5651 | 1 | IC 4M-BIT SRAM 70-NS CMOS | 28480 | 1818-5651 |
| U335 | 08712-80033 | 1 | EPROM U335 | 28480 | 08712-80033 |
| U338 | 1826-0393 | 1 | IC PWR MGT-V-REG-ADJ-POS 1.2/37V 3 PINS | 28480 | 1826-0393 |
| U401 | 1820-4261 | 1 | IC MUXR/DATA-SEL TTL/ALS 2-TO-1-LINE | 28480 | 1820-4261 |
| U402 | 1820-4275 | 1 | IC FF TTL/ALS D-TYPE POS-EDGE-TRIG | 28480 | 1820-4275 |
| U406 | 1820-5679 | 1 | IC TRANSCEIVER TTL/F BUS OCTL | 02237 | 74F245SCX. |
| U407 | 1820-5679 | 1 | IC TRANSCEIVER TTL/F BUS OCTL | 02237 | 74F245SCX. |
| U408 | 1820-5679 | 1 | IC TRANSCEIVER TTL/F BUS OCTL | 02237 | 74F245SCX. |
| U409 | 1820-5679 | 1 | IC TRANSCEIVER TTL/F BUS OCTL | 02237 | 74F245SCX. |
| U412 | 08712-80021 | 1 | PAL U412 | 28480 | 08712-80021 |
| U413 | 1820-7240 | 1 | IC ARBITER TTL/F BUS ASYNCHRO 4-BIT | 28480 | 1820-7240 |
| U414 | 08712-80022 | 1 | PAL U414 | 28480 | 08712-80022 |
| U415 | 1820-7309 | 1 | IC MUXR/DATA-SEL TTL/F 4-TO-1-LINE DUAL | 28480 | 1820-7309 |
| U416 | 1820-6311 | 1 | IC FF TTL/F D-TYPE POS-EDGE-TRIG COM | 28480 | 1820-6311 |
| U418 | 1820-6311 | 1 | IC FF TTL/F D-TYPE POS-EDGE-TRIG COM | 28480 | 1820-6311 |
| U419 | 1820-6311 | 1 | IC FF TTL/F D-TYPE POS-EDGE-TRIG COM | 28480 | 1820-6311 |
| U421 | 1820-5679 | 1 | IC TRANSCEIVER TTL/F BUS OCTL | 02237 | 74F245SCX. |
| U422 | 1820-5679 | 1 | IC TRANSCEIVER TTL/F BUS OCTL | 02237 | 74F245SCX. |
| U423 | 1820-5679 | 1 | IC TRANSCEIVER TTL/F BUS OCTL | 02237 | 74F245SCX. |
| U424 | 1820-5679 | 1 | IC TRANSCEIVER TTL/F BUS OCTL | 02237 | 74F245SCX. |
| U427 | 1820-4260 | 1 | IC MUXR/DATA-SEL TTL/ALS 4-TO-1-LINE | 28480 | 1820-4260 |
| U428 | 1820-4260 | 1 | IC MUXR/DATA-SEL TTL/ALS 4-TO-1-LINE | 28480 | 1820-4260 |
| U429 | 1820-4260 | 1 | IC MUXR/DATA-SEL TTL/ALS 4-TO-1-LINE | 28480 | 1820-4260 |
| U430 | 1820-4260 | 1 | IC MUXR/DATA-SEL TTL/ALS 4-TO-1-LINE | 28480 | 1820-4260 |

**HP Part Number 08712-60042
CPU (continued)**

| Reference Designator | HP Part Number | Qty | Description | Mfr Code | Mfr Part Number |
|----------------------|----------------|-----|---|----------|-----------------|
| U431 | 1820-4260 | 1 | IC MUXR/DATA-SEL TTL/ALS 4-TO-1-LINE | 28480 | 1820-4260 |
| U432 | 1820-4260 | 1 | IC MUXR/DATA-SEL TTL/ALS 4-TO-1-LINE | 28480 | 1820-4260 |
| U500 | 1820-5041 | 1 | IC FF TTL/F J-K BAR POS-EDGE-TRIG | 28480 | 1820-5041 |
| U501 | 1820-4275 | 1 | IC FF TTL/ALS D-TYPE POS-EDGE-TRIG | 28480 | 1820-4275 |
| U502 | 1820-4934 | 1 | IC CNTR TTL/ALS BIN SYNC/ASYN | 28480 | 1820-4934 |
| U503 | 1820-6154 | 1 | IC-PROGRAMMABLE INTERVAL TIMER | 28480 | 1820-6154 |
| U504 | 1820-4271 | 1 | IC CNTR TTL/ALS BIN SYNCHRO | 28480 | 1820-4271 |
| U505 | 1820-4275 | 1 | IC FF TTL/ALS D-TYPE POS-EDGE-TRIG | 28480 | 1820-4275 |
| U506 | 1820-4275 | 1 | IC FF TTL/ALS D-TYPE POS-EDGE-TRIG | 28480 | 1820-4275 |
| U507 | 1820-4998 | 1 | IC GATE TTL/F OR QUAD 2-INP | 28480 | 1820-4998 |
| U510 | 08720-80049 | 1 | EPROM-FRONT PNL | 28480 | 08720-80049 |
| U511 | 08720-80047 | 1 | GAL-I/O EXPANDER | 28480 | 08720-80047 |
| U512 | 1826-2784 | 1 | IC PWR MGT-V-REG-ADJ-NEG -3/-24V 5 PINS | 28480 | 1826-2784 |
| U515 | 1820-4277 | 1 | IC FF TTL/ALS D-TYPE POS-EDGE-TRIG COM | 28480 | 1820-4277 |
| U516 | 1820-5940 | 1 | IC GATE CMOS/ACT AND QUAD 2-INP | 02237 | 74ACT08SCX. |
| U517 | 1826-1963 | 1 | IC AUDIO AMPL PWR SINGLE 8 PIN | 28480 | 1826-1963 |
| U521 | 1820-4276 | 1 | IC FF TTL/ALS J-K NEG-EDGE-TRIG | 28480 | 1820-4276 |
| U524 | 1821-1721 | 1 | IC-HPIB CONTROLLER | 28480 | 1821-1721 |
| U525 | 1820-6175 | 1 | IC-INTERFACE XCVR BIPOLAR BUS OCTL | 28480 | 1820-6175 |
| U526 | 1820-6176 | 1 | IC-INTERFACE XCVR BIPOLAR BUS OCTL | 28480 | 1820-6176 |
| U529 | 1820-5944 | 1 | IC GATE CMOS/ACT OR QUAD 2-INP | 02237 | 74ACT32SCX. |
| U530 | 1820-7776 | 1 | IC-INTERFACE MISC-DGTL CMOS | 28480 | 1820-7776 |
| U601 | 1821-0787 | 1 | IC-INTERFACE XCVR CMOS RS-232C | 28480 | 1821-0787 |
| U602 | 1820-4998 | 1 | IC GATE TTL/F OR QUAD 2-INP | 28480 | 1820-4998 |
| U603 | 1820-5870 | 1 | IC INV TTL/F HEX | 02237 | 74F04SCX. |
| U604 | 1820-5938 | 1 | IC GATE CMOS/ACT NAND QUAD 2-INP | 02237 | 74ACT00SCX. |
| U606 | 1813-0710 | 1 | CLK-OSC-XTAL STD 24.0-MHZ 0.01% | 28480 | 1813-0710 |
| U607 | 1821-1618 | 1 | IC-DUAL UARTs; IDE INTERFACE; SUPER I/O | 28480 | 1821-1618 |
| U609 | 1820-4275 | 1 | IC FF TTL/ALS D-TYPE POS-EDGE-TRIG | 28480 | 1820-4275 |
| U701 | 1813-0861 | 1 | CLK-OSC-XTAL STD 40.000-MHZ 0.01% | 28480 | 1813-0861 |
| U702 | 1821-1894 | 1 | IC-16-/32-BIT INTEGER AND 32-/40-BIT | 28480 | 1821-1894 |
| U703 | 1820-5040 | 1 | IC FF TTL/F D-TYPE POS-EDGE-TRIG | 28480 | 1820-5040 |
| U704 | 1820-5218 | 1 | IC DRVR TTL/F LINE OCTL | 28480 | 1820-5218 |
| U705 | 08712-80031 | 1 | PAL U705 | 28480 | 08712-80031 |
| U706 | 1820-4275 | 1 | IC FF TTL/ALS D-TYPE POS-EDGE-TRIG | 28480 | 1820-4275 |

**Indicates factory-selected value*

**HP Part Number 08712-60042
CPU (continued)**

| Reference Designator | HP Part Number | Qty | Description | Mfr Code | Mfr Part Number |
|----------------------|----------------|-----|---|----------|-----------------|
| U707 | 1820-4998 | 1 | IC GATE TTL/F OR QUAD 2-INP | 28480 | 1820-4998 |
| U710 | 1820-5130 | 1 | IC DCDR-DEMURR TTL/F BIN 8-TO-1-LINE | 28480 | 1820-5130 |
| U713 | 1820-4790 | 1 | IC TRANSCEIVER TTL/ALS BUS OCTL | 28480 | 1820-4790 |
| U716 | 1818-5918 | 1 | IC 1M-BIT SRAM 25-NS CMOS | 28480 | 1818-5918 |
| U717 | 1818-5918 | 1 | IC 1M-BIT SRAM 25-NS CMOS | 28480 | 1818-5918 |
| U720 | 1820-6722 | 1 | IC SHF-RGTR TTL/F MULTI-MODE | 28480 | 1820-6722 |
| U721 | 1820-6722 | 1 | IC SHF-RGTR TTL/F MULTI-MODE | 28480 | 1820-6722 |
| U722 | 1820-6722 | 1 | IC SHF-RGTR TTL/F MULTI-MODE | 28480 | 1820-6722 |
| U723 | 1820-6722 | 1 | IC SHF-RGTR TTL/F MULTI-MODE | 28480 | 1820-6722 |
| U725 | 1820-5870 | 1 | IC INV TTL/F HEX | 02237 | 74F04SCX. |
| U726 | 1820-6311 | 1 | IC FF TTL/F D-TYPE POS-EDGE-TRIG COM | 28480 | 1820-6311 |
| U801 | 1820-6154 | 1 | IC-PROGRAMMABLE INTERVAL TIMER | 28480 | 1820-6154 |
| U802 | 08712-80024 | 1 | PAL U802 | 28480 | 08712-80024 |
| U803 | 1820-4271 | 1 | IC CNTR TTL/ALS BIN SYNCHRO | 28480 | 1820-4271 |
| U804 | 08712-80025 | 1 | PAL U804 | 28480 | 08712-80025 |
| U805 | 1820-4934 | 1 | IC CNTR TTL/ALS BIN SYNC/ASYN | 28480 | 1820-4934 |
| U806 | 1820-4263 | 1 | IC LCH TTL/ALS ADDRESSABLE 8-BIT | 28480 | 1820-4263 |
| U807 | 1820-5566 | 1 | IC SCHMITT-TRIG TTL/F INV HEX | 28480 | 1820-5566 |
| U808 | 1820-4364 | 1 | IC GATE TTL/F AND QUAD 2-INP | 28480 | 1820-4364 |
| U809 | 1820-4861 | 1 | IC BFR TTL/F NAND QUAD 2-INP | 28480 | 1820-4861 |
| U810 | 1820-5050 | 1 | IC FF TTL/F D-TYPE POS-EDGE-TRIG COM | 28480 | 1820-5050 |
| U811 | 1820-5050 | 1 | IC FF TTL/F D-TYPE POS-EDGE-TRIG COM | 28480 | 1820-5050 |
| U812 | 1820-5475 | 1 | IC FF CMOS/HCT D-TYPE POS-EDGE-TRIG COM | 28480 | 1820-5475 |
| U813 | 1820-6306 | 1 | IC TRANSCEIVER CMOS/HCT BUS OCTL | 28480 | 1820-6306 |
| U814 | 1820-6306 | 1 | IC TRANSCEIVER CMOS/HCT BUS OCTL | 28480 | 1820-6306 |
| U900 | 1820-4364 | 1 | IC GATE TTL/F AND QUAD 2-INP | 28480 | 1820-4364 |
| U901 | 1820-5870 | 1 | IC INV TTL/F HEX | 02237 | 74F04SCX. |
| U902 | 1820-6081 | 1 | IC-32-BIT GRAPHICS SYSTEM PROCESSOR | 28480 | 1820-6081 |
| U903 | 1813-0712 | 1 | CLK-OSC-XTAL STD 50.0-MHZ 0.01% | 28480 | 1813-0712 |
| U904 | 1820-5377 | 1 | IC MUXR/DATA-SEL TTL/F 2-TO-1-LINE QUAD | 28480 | 1820-5377 |
| U905 | 1820-6196 | 1 | IC LCH TTL/F TRANSPARENT OCTL | 28480 | 1820-6196 |
| U906 | 1820-6196 | 1 | IC LCH TTL/F TRANSPARENT OCTL | 28480 | 1820-6196 |
| U907 | 1820-5377 | 1 | IC MUXR/DATA-SEL TTL/F 2-TO-1-LINE QUAD | 28480 | 1820-5377 |
| U909 | 08712-80027 | 1 | PAL U909 | 28480 | 08712-80027 |
| U912 | 1818-5455 | 1 | VRAM 256KX8 80 NS SOJ FST-PG-M 5V | 28480 | 1818-5455 |

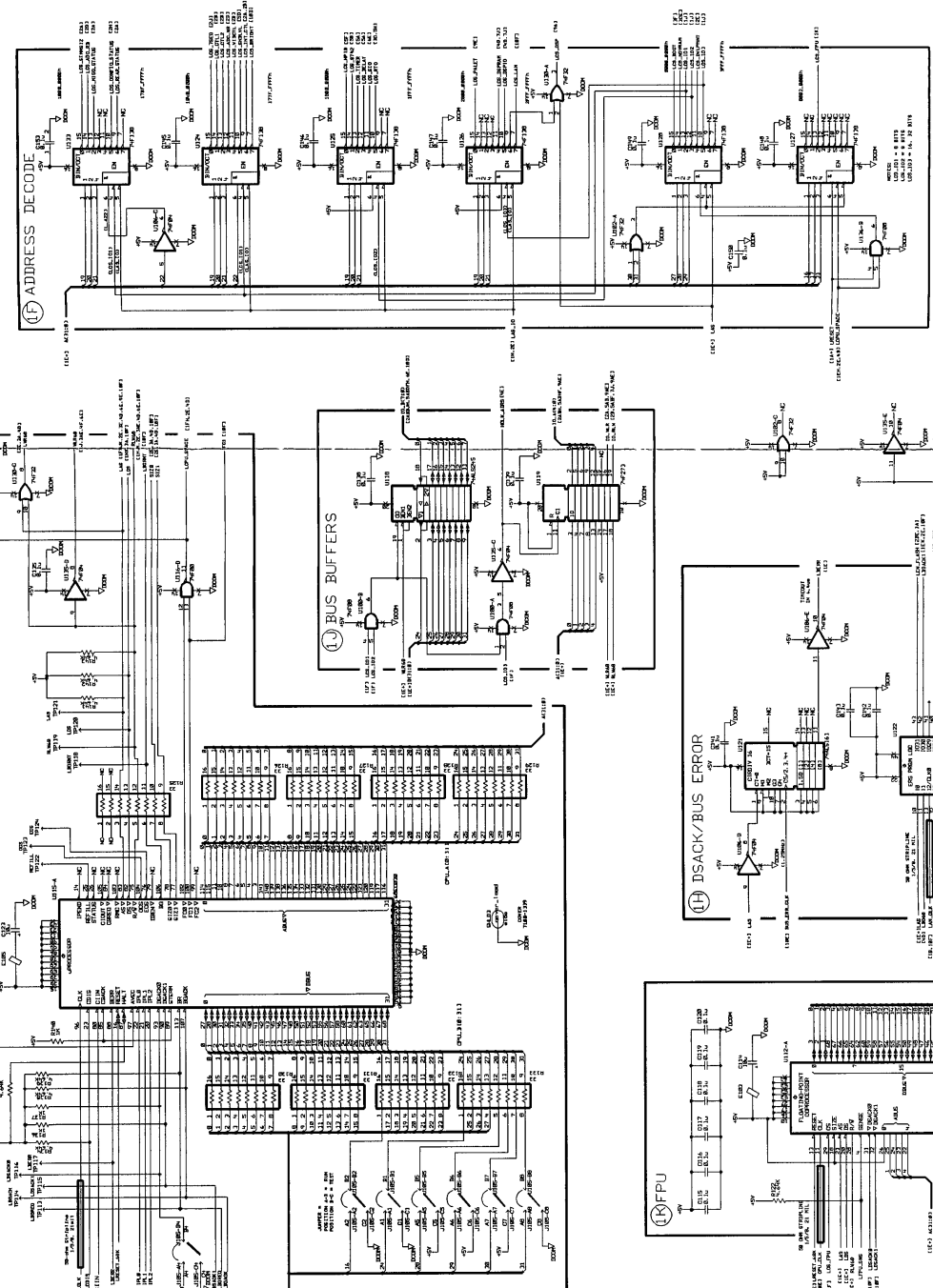
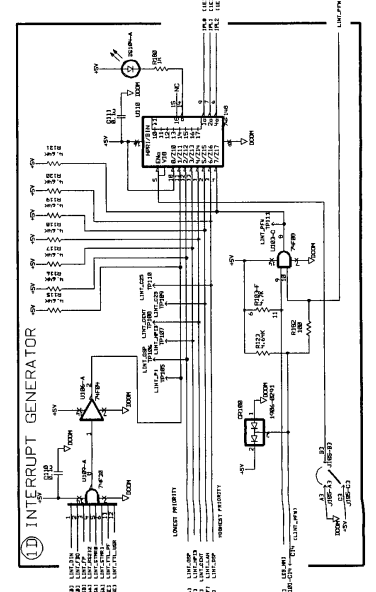
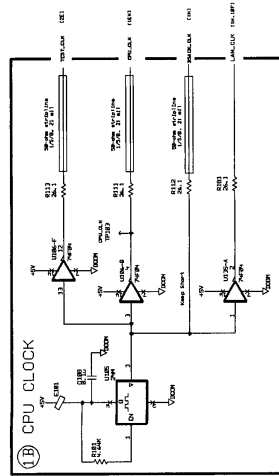
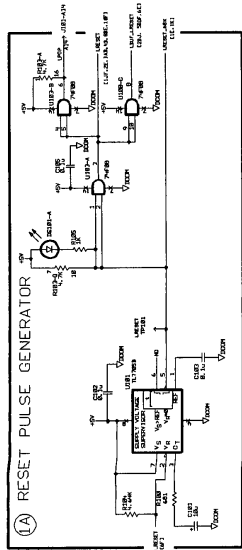
**HP Part Number 08712-60042
CPU (continued)**

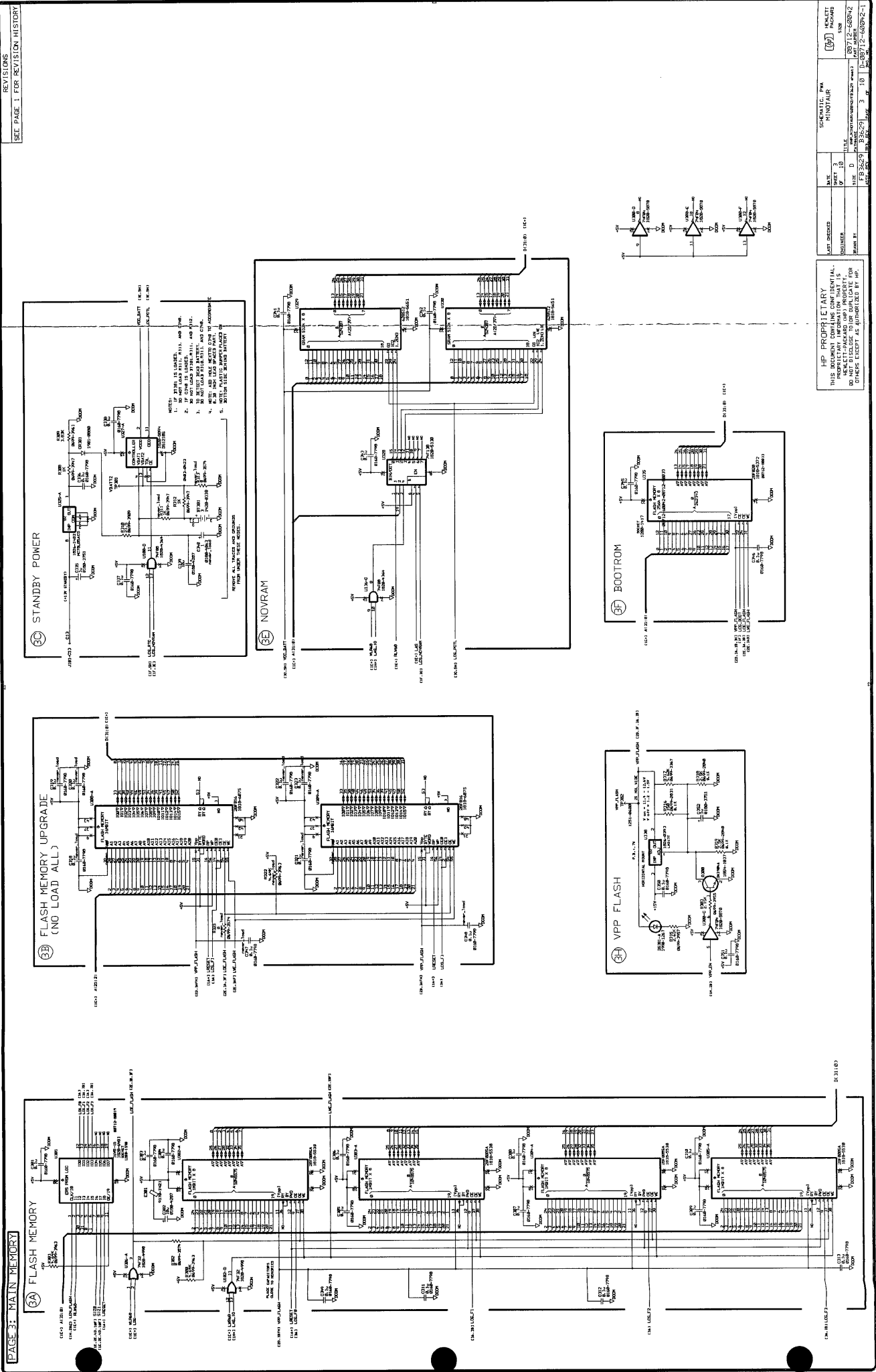
| Reference Designator | HP Part Number | Qty | Description | Mfr Code | Mfr Part Number |
|----------------------|----------------|-----|--|----------|-----------------|
| U913 | 1818-5455 | 1 | VRAM 256KX8 80 NS SOJ FST-PG-M 5V | 28480 | 1818-5455 |
| U914 | 1818-5455 | 1 | VRAM 256KX8 80 NS SOJ FST-PG-M 5V | 28480 | 1818-5455 |
| U915 | 1818-5455 | 1 | VRAM 256KX8 80 NS SOJ FST-PG-M 5V | 28480 | 1818-5455 |
| U918 | 1820-5040 | 1 | IC FF TTL/F D-TYPE POS-EDGE-TRIG | 28480 | 1820-5040 |
| U919 | 1820-5870 | 1 | IC INV TTL/F HEX | 02237 | 74F04SCX. |
| U920 | 08712-80026 | 1 | PAL U920 | 28480 | 08712-80026 |
| U921 | 1820-7309 | 1 | IC MUXR/DATA-SEL TTL/F 4-TO-1-LINE DUAL | 28480 | 1820-7309 |
| U922 | 1820-7309 | 1 | IC MUXR/DATA-SEL TTL/F 4-TO-1-LINE DUAL | 28480 | 1820-7309 |
| U923 | 1820-6311 | 1 | IC FF TTL/F D-TYPE POS-EDGE-TRIG COM | 28480 | 1820-6311 |
| U926 | 1818-4983 | 1 | IC 256K-BIT SRAM 15-NS CMOS | 28480 | 1818-4983 |
| U927 | 1820-5377 | 1 | IC MUXR/DATA-SEL TTL/F 2-TO-1-LINE QUAD | 28480 | 1820-5377 |
| U928 | 1818-4983 | 1 | IC 256K-BIT SRAM 15-NS CMOS | 28480 | 1818-4983 |
| U929 | 1820-5679 | 1 | IC TRANSCEIVER TTL/F BUS OCTL | 02237 | 74F245SCX. |
| U930 | 1820-5679 | 1 | IC TRANSCEIVER TTL/F BUS OCTL | 02237 | 74F245SCX. |
| U932 | 1820-4264 | 1 | IC LCH TTL/ALS TRANSPARENT OCTL | 28480 | 1820-4264 |
| U1001 | 1826-1402 | 1 | IC PWR MGT-V-REG-FXD-POS 4.8/5.2V 8 PINS | 28480 | 1826-1402 |
| U1002 | 1820-4364 | 1 | IC GATE TTL/F AND QUAD 2-INP | 28480 | 1820-4364 |
| U1004 | 1820-5947 | 1 | IC FF CMOS/ACT D-TYPE POS-EDGE-TRIG COM | 02237 | 74ACT574SCX. |
| U1006 | 1826-3008 | 1 | VIDEODAC 8-BIT 44-PLCC CMOS | 28480 | 1826-3008 |
| U1015 | 1813-0709 | 1 | CLK-OSC-XTAL STD 20.0-MHZ 0.01% | 28480 | 1813-0709 |
| U1016 | 1820-4934 | 1 | IC CNTR TTL/ALS BIN SYNC/ASYN | 28480 | 1820-4934 |
| U1017 | 1820-4934 | 1 | IC CNTR TTL/ALS BIN SYNC/ASYN | 28480 | 1820-4934 |
| U1020 | 1821-1786 | 1 | IC-INTERFACE SER-XMTR/RCVR CMOS BUS | 28480 | 1821-1786 |
| U1021 | 1820-4788 | 1 | IC DRVR TTL/ALS BUS OCTL | 28480 | 1820-4788 |
| U1022 | 1820-4687 | 1 | IC GATE TTL/F NOR QUAD 2-INP | 28480 | 1820-4687 |
| U1028 | 1820-4364 | 1 | IC GATE TTL/F AND QUAD 2-INP | 28480 | 1820-4364 |
| U1029 | 1820-5944 | 1 | IC GATE CMOS/ACT OR QUAD 2-INP | 02237 | 74ACT32SCX. |
| VR201 | 1826-1601 | 1 | IC PWR MGT-V-REF-ADJ 2.5/36V 8 PINS | 28480 | 1826-1601 |
| XU122 | 1200-1592 | 1 | SOCKET-IC-PLCC 44-CONT SQUARE J-LEAD | 28480 | 1200-1592 |
| XU705 | 1200-1572 | 1 | SOCKET-IC-PLCC 28-CONT SQUARE J-LEAD | 28480 | 1200-1572 |
| XU912 | 1252-6636 | 1 | SOCKET-IC-PLCC 40-CONT SOJ J-LEAD | 28480 | 1252-6636 |
| XU913 | 1252-6636 | 1 | SOCKET-IC-PLCC 40-CONT SOJ J-LEAD | 28480 | 1252-6636 |
| XU914 | 1252-6636 | 1 | SOCKET-IC-PLCC 40-CONT SOJ J-LEAD | 28480 | 1252-6636 |
| XU915 | 1252-6636 | 1 | SOCKET-IC-PLCC 40-CONT SOJ J-LEAD | 28480 | 1252-6636 |

**Indicates factory-selected value*

| | | |
|-----|-------------------------------|------|
| REV | DESCRIPTION | DATE |
| D | AS ISSUED PER PDS3-89792 | 5 |
| E | AS ISSUED PER PDS3-89795 / AN | 7 |
| F | AS ISSUED PER PDS3-10538 / AN | 7 |

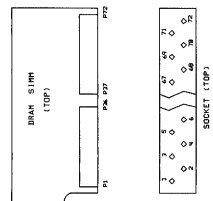
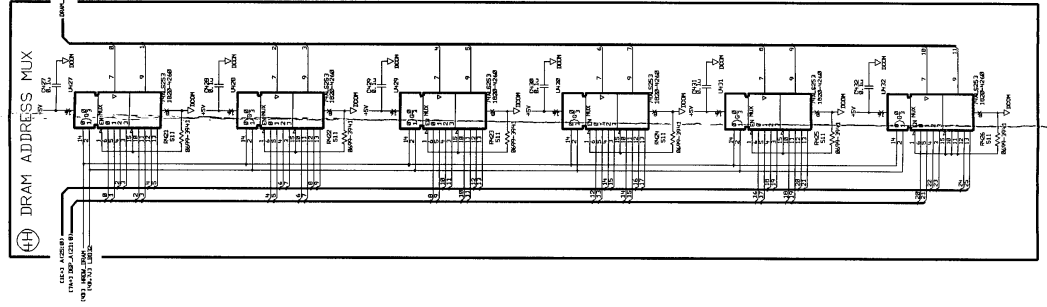
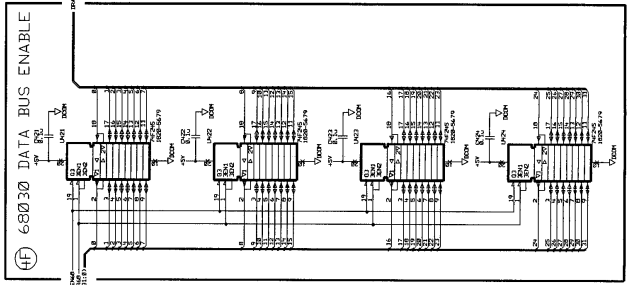
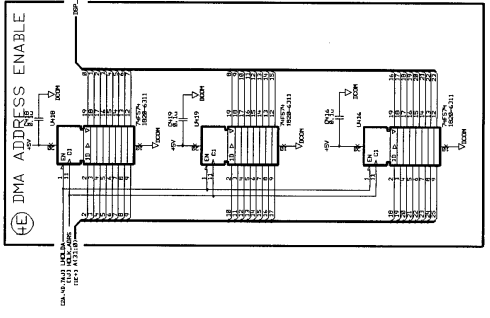
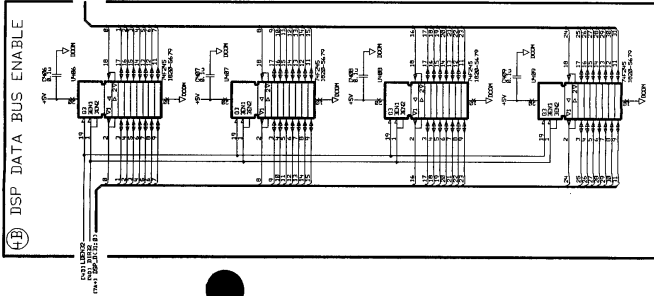
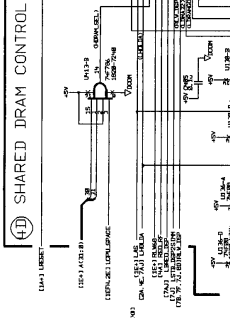
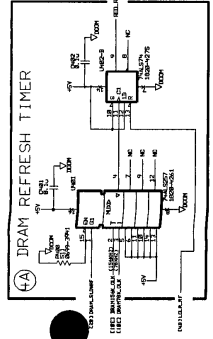
D-88712-60042-1
APPROVED





UP: PROPRIETARY
THIS DOCUMENT CONTAINS CONFIDENTIAL
PROPRIETARY INFORMATION THAT IS
NOT TO BE DISCLOSED OR REPRODUCED FOR
OTHERS EXCEPT AS AUTHORIZED BY US.

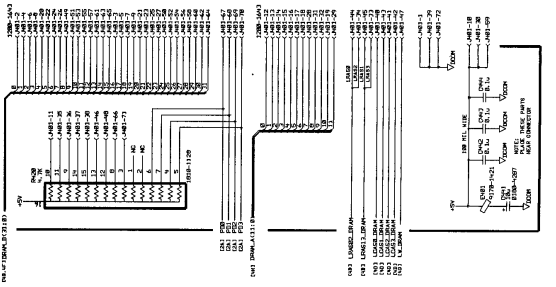
| DATE | BY | REVISION | DESCRIPTION |
|------------|----------|----------|-------------|
| 08/12/2004 | MINOTAUR | 1 | INITIAL |
| 08/12/2004 | MINOTAUR | 2 | REVISED |
| 08/12/2004 | MINOTAUR | 3 | REVISED |
| 08/12/2004 | MINOTAUR | 4 | REVISED |
| 08/12/2004 | MINOTAUR | 5 | REVISED |
| 08/12/2004 | MINOTAUR | 6 | REVISED |
| 08/12/2004 | MINOTAUR | 7 | REVISED |
| 08/12/2004 | MINOTAUR | 8 | REVISED |
| 08/12/2004 | MINOTAUR | 9 | REVISED |
| 08/12/2004 | MINOTAUR | 10 | REVISED |

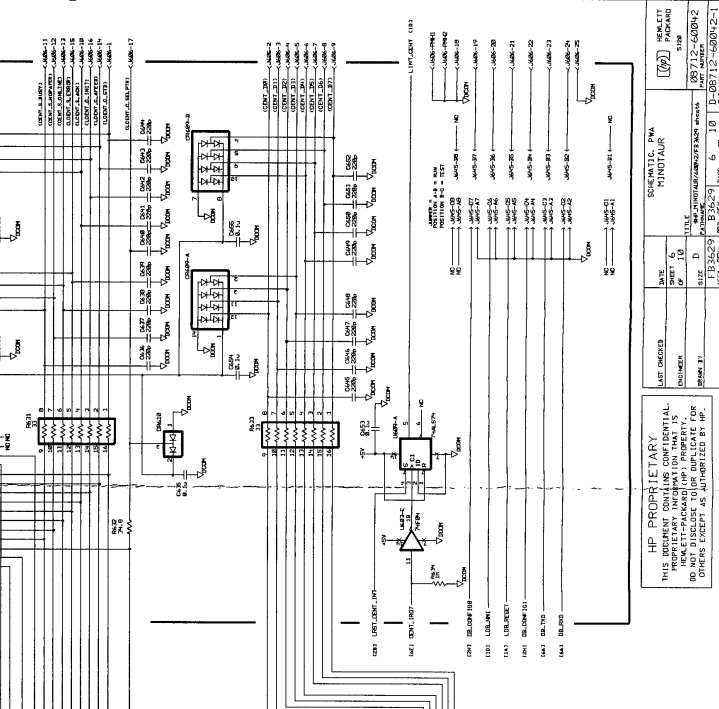
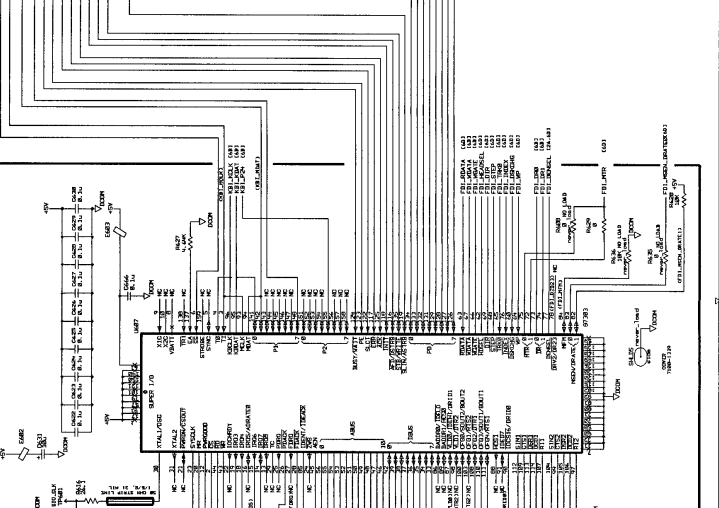
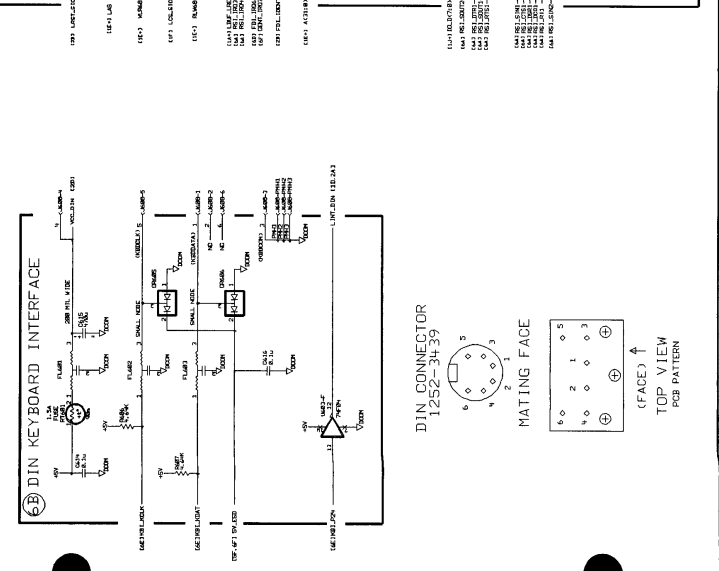
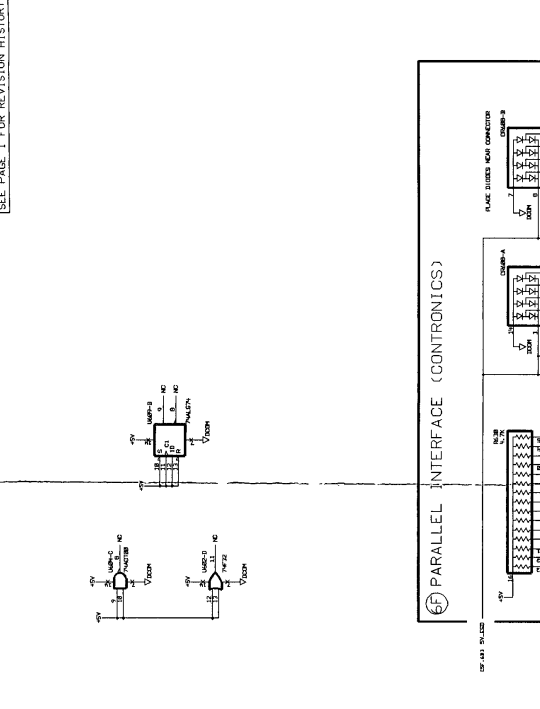
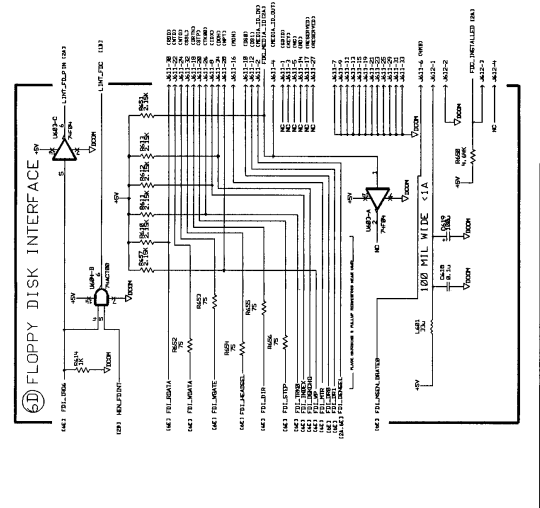
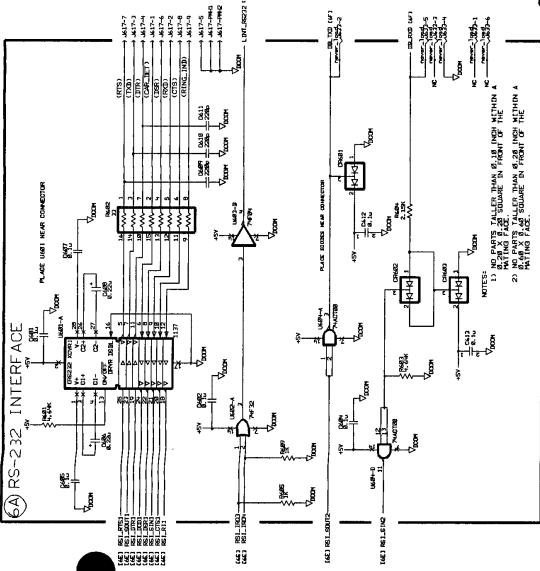


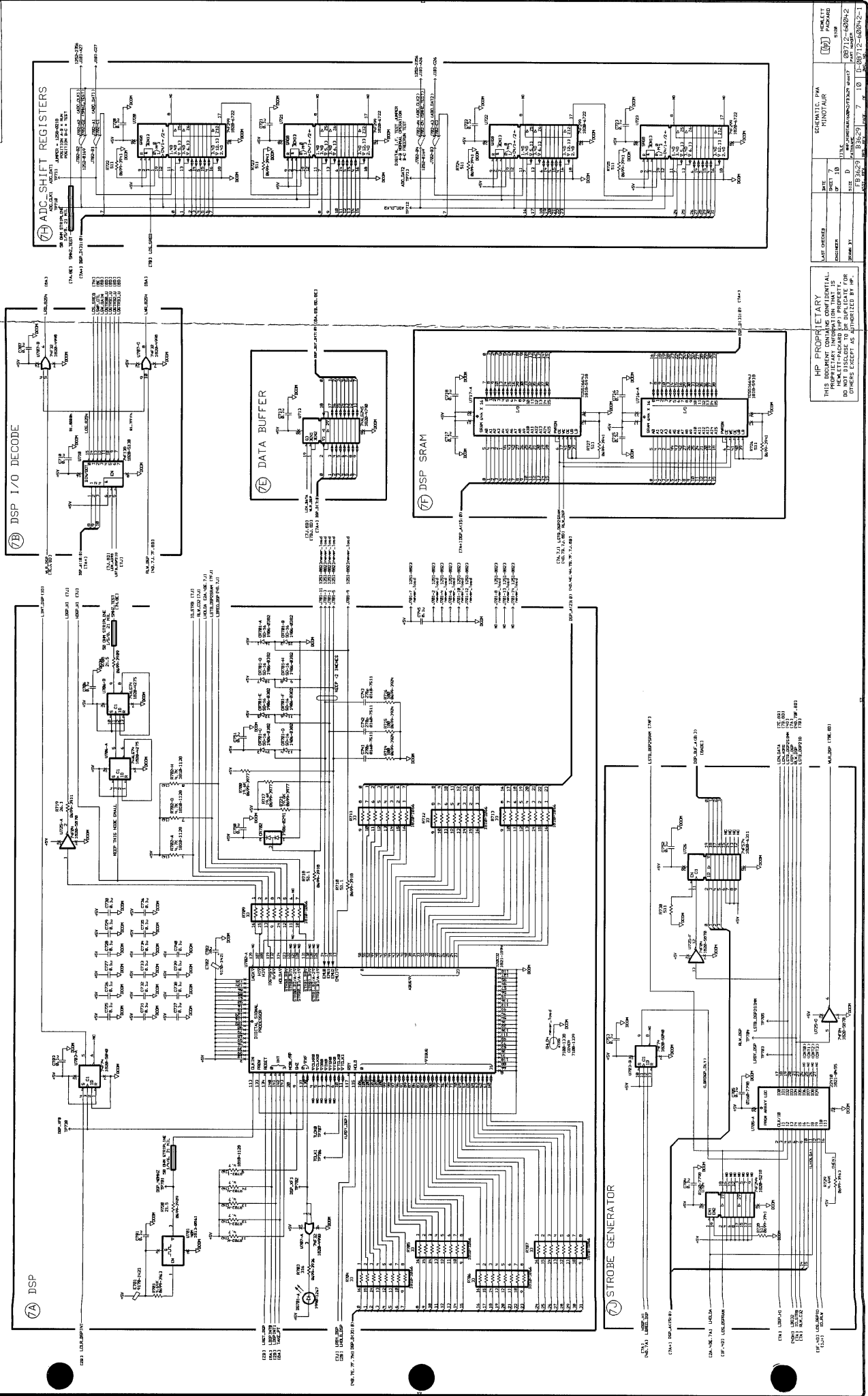
SIMM SIZE DETECTION

| SIZE | SPEED | DATA | SIZE |
|------|-------|---------|------|
| 0 | 1 | 4MBITS | 1 |
| 1 | 1 | 8MBITS | 1 |
| 2 | 1 | 16MBITS | 1 |
| 3 | 1 | 32MBITS | 1 |
| 4 | 1 | 64MBITS | 1 |

DRAM SIMM
ADDRESS = DRAM.BANKEN TO FFFF_FFFF
USER: DRAM X 8/7/96 = 1010-3021
DRAM SIZE DETECTION = 1010-3021

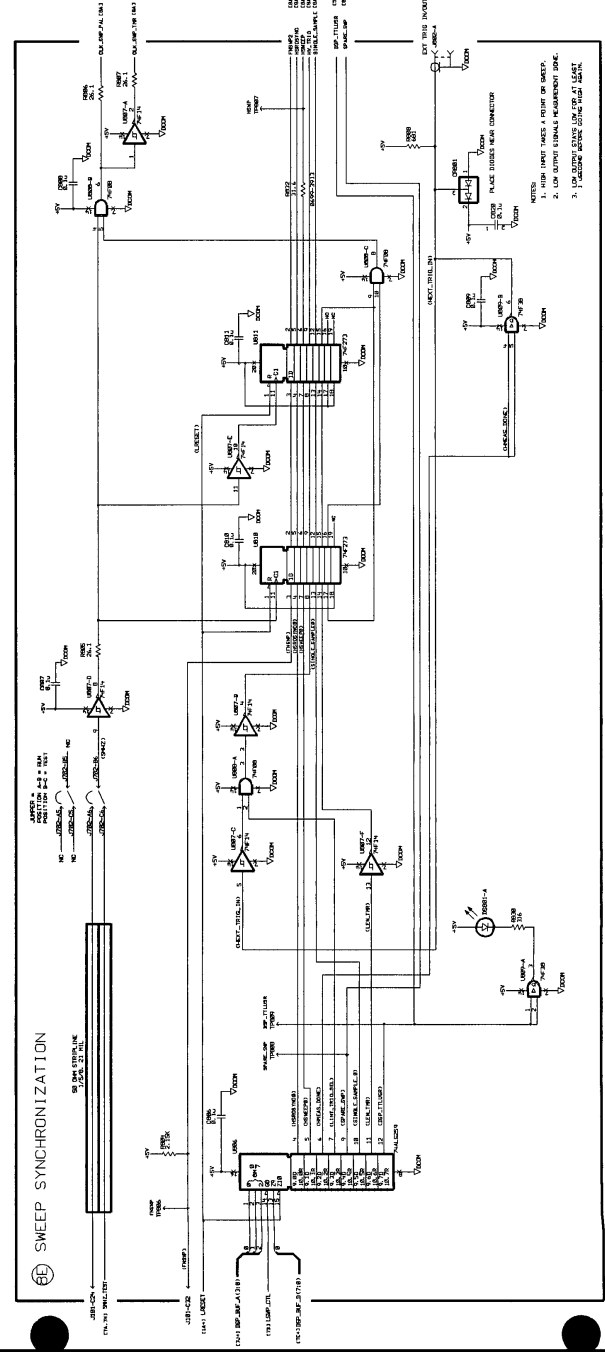
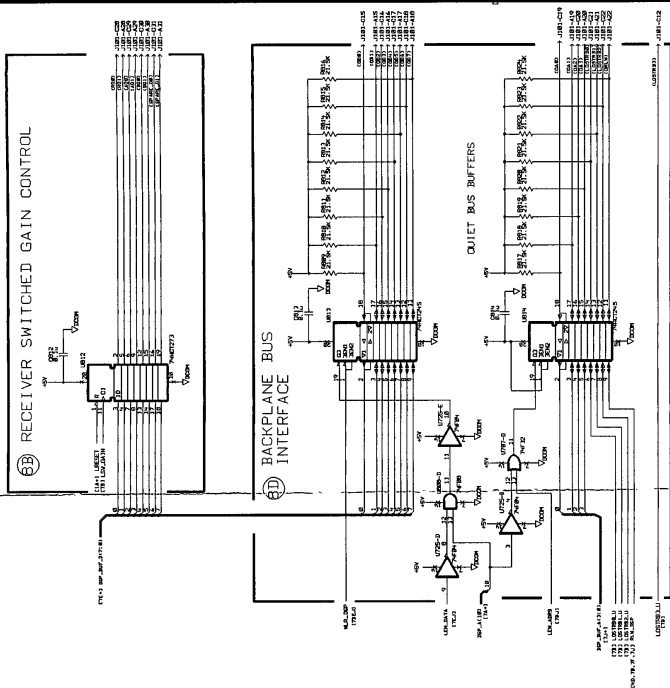
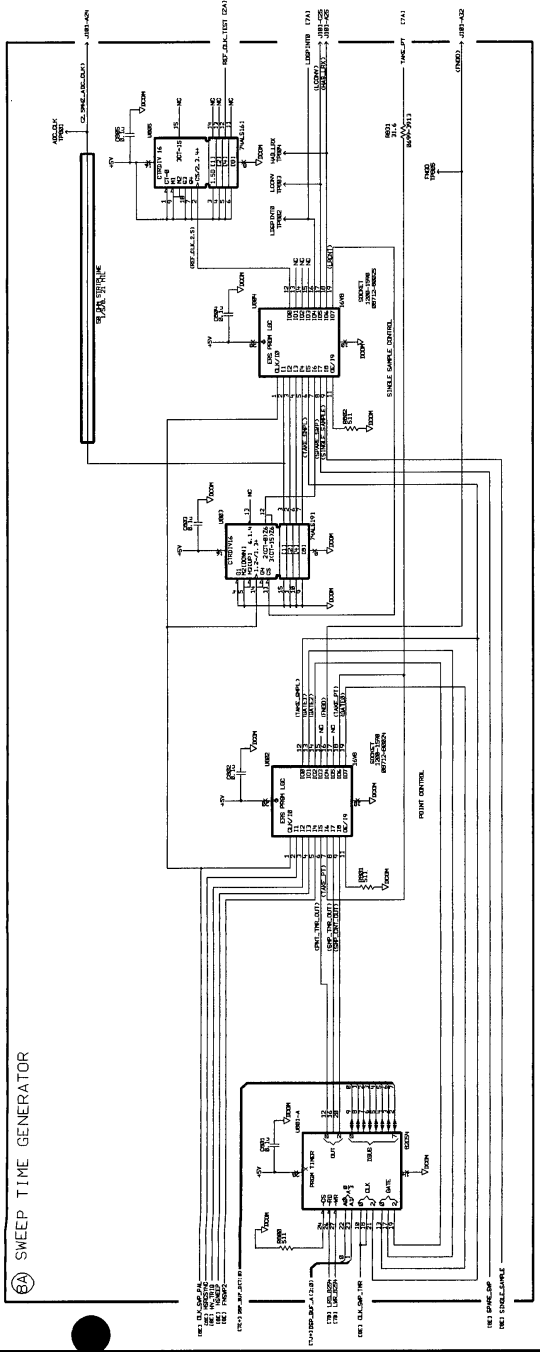






HP PROPRIETARY
 THIS DOCUMENT IS UNCLASSIFIED
 PROPRIETARY INFORMATION THAT IS
 NOT TO BE RELEASED OR DISCLOSED TO
 OTHERS EXCEPT AS AUTHORIZED BY HP.

LAST ORDERED: 08/12/2004
 SHEET 7 OF 10
 DATE: 08/12/2004
 FILE: 08712-60042-2
 SIZE: 1,234,567 bytes
 SHEET 7 OF 10
 08712-60042-1



HP PROPRIETARY
INFORMATION
PROPERTY OF HP
DO NOT DISSEMINATE
OTHERS EXCEPT AS AUTHORIZED BY HP.

| | | | |
|----------|-------------|-----------|-------------|
| DATE | DESIGNED BY | REVISIONS | APPROVED BY |
| 08/11/82 | MINI/TAUR | 0 | |
| 08/11/82 | | 1 | |
| 08/11/82 | | 2 | |
| 08/11/82 | | 3 | |
| 08/11/82 | | 4 | |
| 08/11/82 | | 5 | |
| 08/11/82 | | 6 | |
| 08/11/82 | | 7 | |
| 08/11/82 | | 8 | |
| 08/11/82 | | 9 | |
| 08/11/82 | | 10 | |
| 08/11/82 | | 11 | |
| 08/11/82 | | 12 | |
| 08/11/82 | | 13 | |
| 08/11/82 | | 14 | |
| 08/11/82 | | 15 | |
| 08/11/82 | | 16 | |
| 08/11/82 | | 17 | |
| 08/11/82 | | 18 | |
| 08/11/82 | | 19 | |
| 08/11/82 | | 20 | |
| 08/11/82 | | 21 | |
| 08/11/82 | | 22 | |
| 08/11/82 | | 23 | |
| 08/11/82 | | 24 | |
| 08/11/82 | | 25 | |
| 08/11/82 | | 26 | |
| 08/11/82 | | 27 | |
| 08/11/82 | | 28 | |
| 08/11/82 | | 29 | |
| 08/11/82 | | 30 | |

REVISIONS
SEE PAGE 1 FOR REVISION HISTORY

PAGE 9: GSP1

9A GRAPHICS PROCESSOR

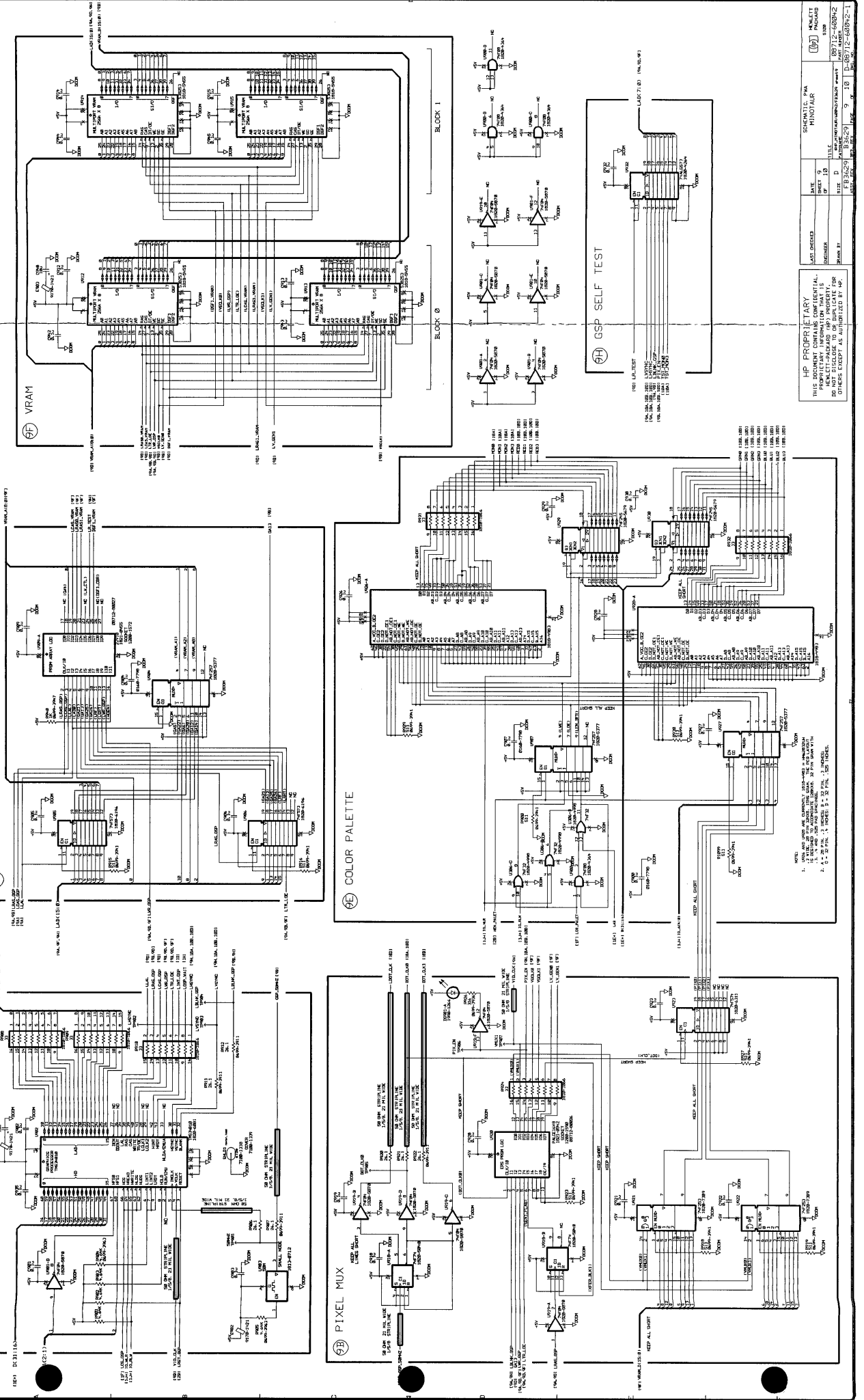
9B VRAM ADDRESS DECODE

9C VRAM

9D COLOR PALETTE

9E PIXEL MUX

9F GSP SELF TEST



HP PROPRIETARY
THIS INFORMATION IS PROPRIETARY INFORMATION THAT IS NOT TO BE RELEASED TO THE PUBLIC OR TO OTHERS EXCEPT AS AUTHORIZED BY HP.

LAST CHECKED BY: [Signature]
DATE: 10/10/91
SHEET: 10
TITLE: GSP1 (GRAPHICS PROCESSOR) PART 9
PART NO.: 80712-60002
REV: 10
D: 80712-60002-1

9F GSP_SELF_TEST

1. 1K 1% RES
2. 1K 1% RES
3. 1K 1% RES
4. 1K 1% RES
5. 1K 1% RES
6. 1K 1% RES
7. 1K 1% RES
8. 1K 1% RES
9. 1K 1% RES
10. 1K 1% RES
11. 1K 1% RES
12. 1K 1% RES
13. 1K 1% RES
14. 1K 1% RES
15. 1K 1% RES
16. 1K 1% RES
17. 1K 1% RES
18. 1K 1% RES
19. 1K 1% RES
20. 1K 1% RES
21. 1K 1% RES
22. 1K 1% RES
23. 1K 1% RES
24. 1K 1% RES
25. 1K 1% RES
26. 1K 1% RES
27. 1K 1% RES
28. 1K 1% RES
29. 1K 1% RES
30. 1K 1% RES
31. 1K 1% RES
32. 1K 1% RES
33. 1K 1% RES
34. 1K 1% RES
35. 1K 1% RES
36. 1K 1% RES
37. 1K 1% RES
38. 1K 1% RES
39. 1K 1% RES
40. 1K 1% RES
41. 1K 1% RES
42. 1K 1% RES
43. 1K 1% RES
44. 1K 1% RES
45. 1K 1% RES
46. 1K 1% RES
47. 1K 1% RES
48. 1K 1% RES
49. 1K 1% RES
50. 1K 1% RES
51. 1K 1% RES
52. 1K 1% RES
53. 1K 1% RES
54. 1K 1% RES
55. 1K 1% RES
56. 1K 1% RES
57. 1K 1% RES
58. 1K 1% RES
59. 1K 1% RES
60. 1K 1% RES
61. 1K 1% RES
62. 1K 1% RES
63. 1K 1% RES
64. 1K 1% RES
65. 1K 1% RES
66. 1K 1% RES
67. 1K 1% RES
68. 1K 1% RES
69. 1K 1% RES
70. 1K 1% RES
71. 1K 1% RES
72. 1K 1% RES
73. 1K 1% RES
74. 1K 1% RES
75. 1K 1% RES
76. 1K 1% RES
77. 1K 1% RES
78. 1K 1% RES
79. 1K 1% RES
80. 1K 1% RES
81. 1K 1% RES
82. 1K 1% RES
83. 1K 1% RES
84. 1K 1% RES
85. 1K 1% RES
86. 1K 1% RES
87. 1K 1% RES
88. 1K 1% RES
89. 1K 1% RES
90. 1K 1% RES
91. 1K 1% RES
92. 1K 1% RES
93. 1K 1% RES
94. 1K 1% RES
95. 1K 1% RES
96. 1K 1% RES
97. 1K 1% RES
98. 1K 1% RES
99. 1K 1% RES
100. 1K 1% RES

9G BLOCK 0

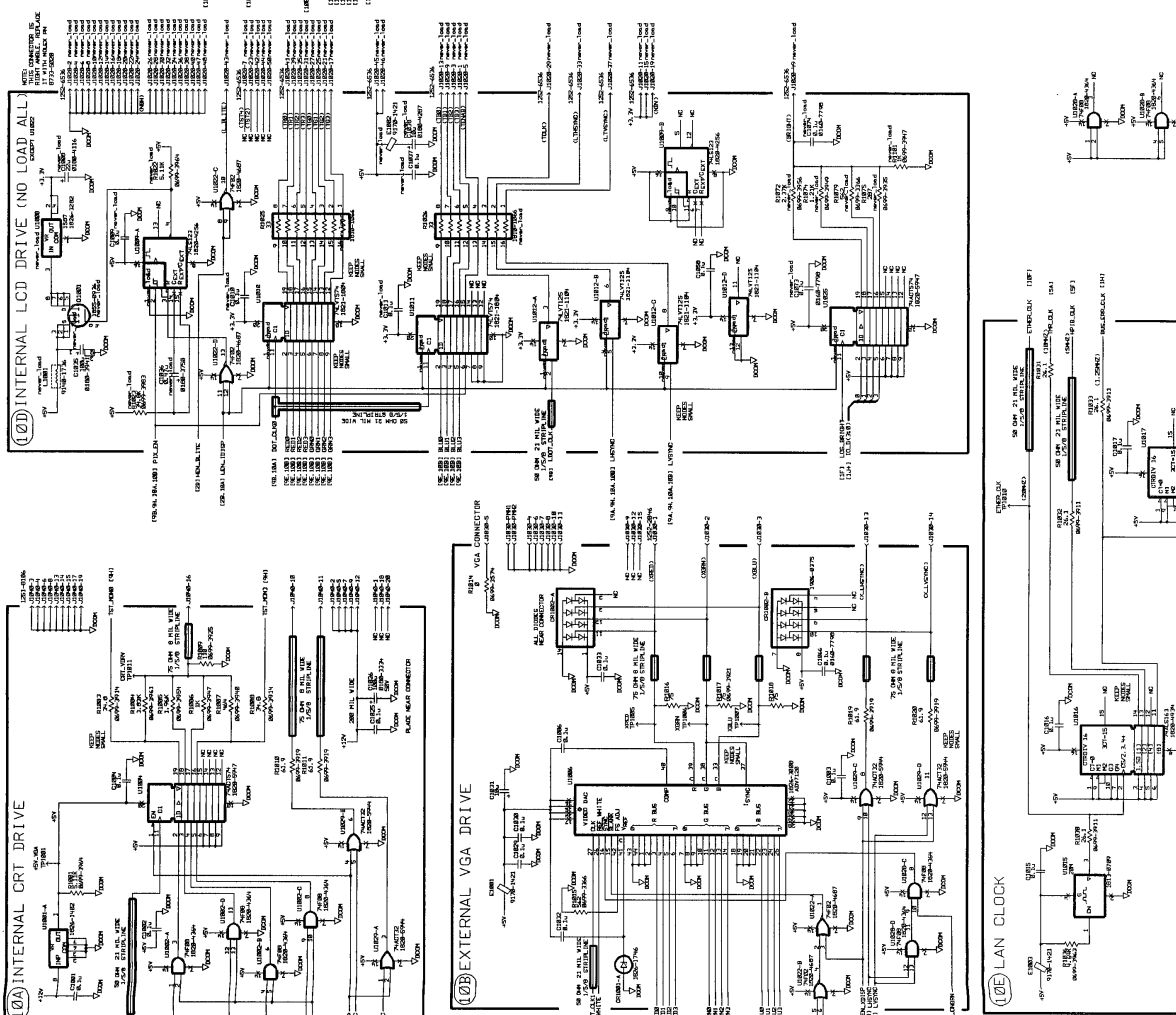
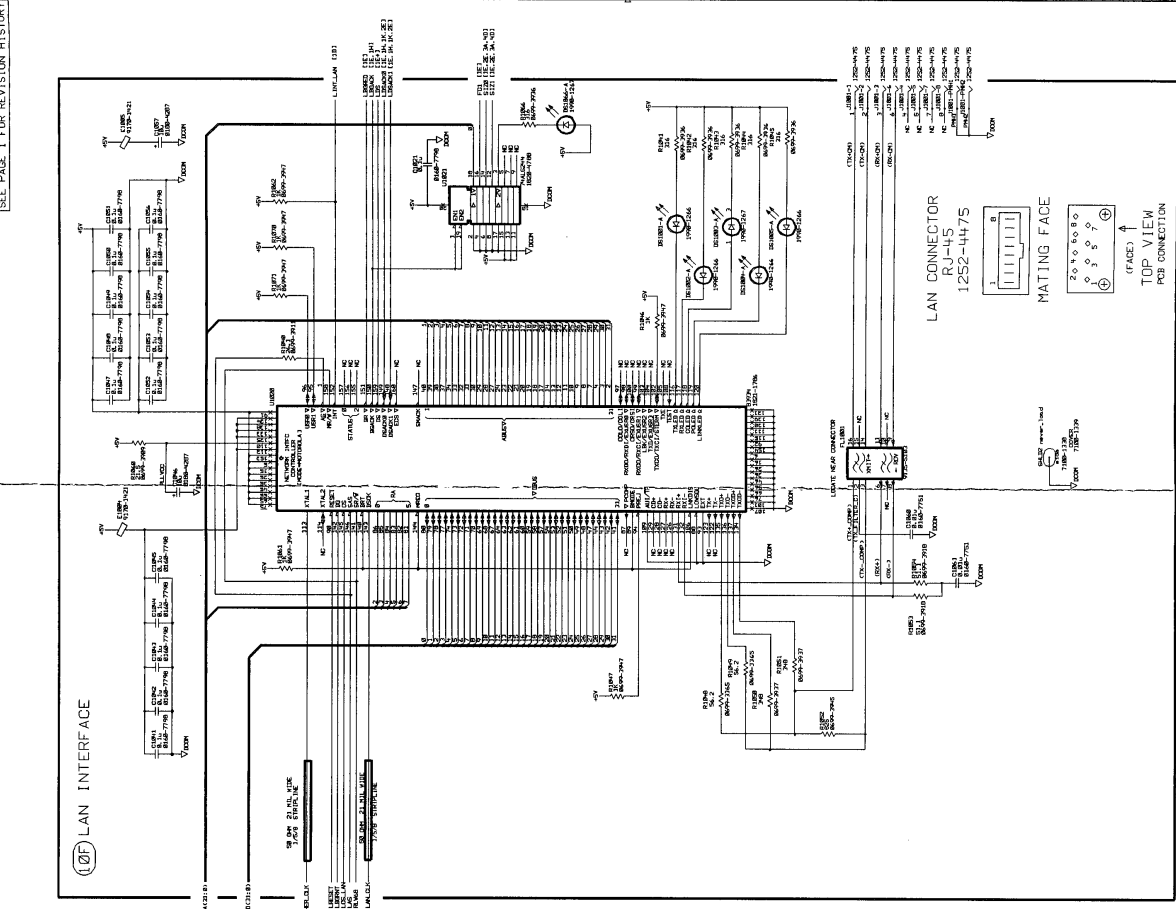
9H BLOCK 1

9I GSP_SELF_TEST

1. 1K 1% RES
2. 1K 1% RES
3. 1K 1% RES
4. 1K 1% RES
5. 1K 1% RES
6. 1K 1% RES
7. 1K 1% RES
8. 1K 1% RES
9. 1K 1% RES
10. 1K 1% RES
11. 1K 1% RES
12. 1K 1% RES
13. 1K 1% RES
14. 1K 1% RES
15. 1K 1% RES
16. 1K 1% RES
17. 1K 1% RES
18. 1K 1% RES
19. 1K 1% RES
20. 1K 1% RES
21. 1K 1% RES
22. 1K 1% RES
23. 1K 1% RES
24. 1K 1% RES
25. 1K 1% RES
26. 1K 1% RES
27. 1K 1% RES
28. 1K 1% RES
29. 1K 1% RES
30. 1K 1% RES
31. 1K 1% RES
32. 1K 1% RES
33. 1K 1% RES
34. 1K 1% RES
35. 1K 1% RES
36. 1K 1% RES
37. 1K 1% RES
38. 1K 1% RES
39. 1K 1% RES
40. 1K 1% RES
41. 1K 1% RES
42. 1K 1% RES
43. 1K 1% RES
44. 1K 1% RES
45. 1K 1% RES
46. 1K 1% RES
47. 1K 1% RES
48. 1K 1% RES
49. 1K 1% RES
50. 1K 1% RES
51. 1K 1% RES
52. 1K 1% RES
53. 1K 1% RES
54. 1K 1% RES
55. 1K 1% RES
56. 1K 1% RES
57. 1K 1% RES
58. 1K 1% RES
59. 1K 1% RES
60. 1K 1% RES
61. 1K 1% RES
62. 1K 1% RES
63. 1K 1% RES
64. 1K 1% RES
65. 1K 1% RES
66. 1K 1% RES
67. 1K 1% RES
68. 1K 1% RES
69. 1K 1% RES
70. 1K 1% RES
71. 1K 1% RES
72. 1K 1% RES
73. 1K 1% RES
74. 1K 1% RES
75. 1K 1% RES
76. 1K 1% RES
77. 1K 1% RES
78. 1K 1% RES
79. 1K 1% RES
80. 1K 1% RES
81. 1K 1% RES
82. 1K 1% RES
83. 1K 1% RES
84. 1K 1% RES
85. 1K 1% RES
86. 1K 1% RES
87. 1K 1% RES
88. 1K 1% RES
89. 1K 1% RES
90. 1K 1% RES
91. 1K 1% RES
92. 1K 1% RES
93. 1K 1% RES
94. 1K 1% RES
95. 1K 1% RES
96. 1K 1% RES
97. 1K 1% RES
98. 1K 1% RES
99. 1K 1% RES
100. 1K 1% RES

REVISIONS
SEE PAGE 1 FOR REVISION HISTORY

PAGE 10: GSP2/LAN



HP PROPRIETARY
THIS DOCUMENT CONTAINS PROPRIETARY INFORMATION THAT IS NOT TO BE DISCLOSED OR REPRODUCED IN ANY MANNER WITHOUT THE EXPRESS WRITTEN PERMISSION OF HP.

DATE: 08/12/00
SHEET 18 OF 20
LAST CHECKED: J. J. JENSEN
DESIGNED: J. J. JENSEN
PART NUMBER: 89712-4490-2
REV: 1.0
HP PART NUMBER: 89712-4490-2

LAN CONNECTOR
RJ-45
1252-4475

MATING FACE
TOP VIEW
POB CONNECTION

LAN INTERFACE
INTERNAL LCD DRIVE (NO LOAD ALL)
INTERNAL CRT DRIVE
EXTERNAL VGA DRIVE
LAN LOCK