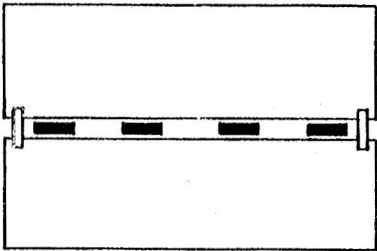
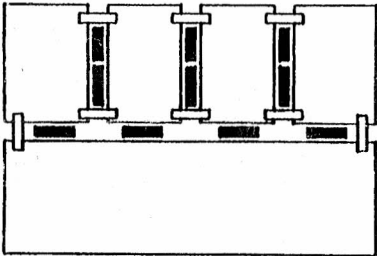


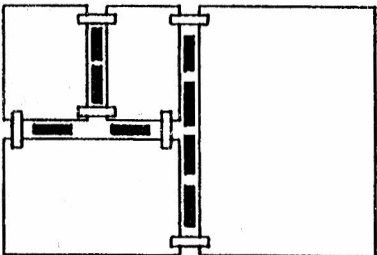
FRONT LOCK LINKS



-VERTICAL LOCK LINKS FRONT
-VERTICAL LOCK LINKS REAR

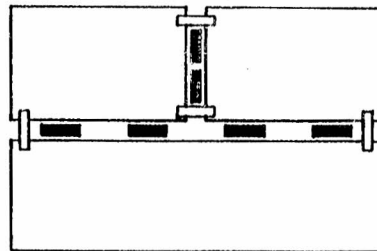


4-VERTICAL LOCK LINKS FRONT
2-VERTICAL LOCK LINKS REAR
12-HORIZONTAL LOCK LINKS FRONT
6-HORIZONTAL LOCK LINKS REAR

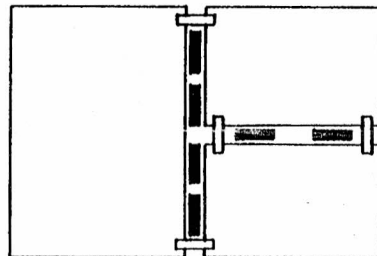


2-VERTICAL LOCK LINKS FRONT
2-VERTICAL LOCK LINKS REAR
12-HORIZONTAL LOCK LINKS FRONT
4-HORIZONTAL LOCK LINKS REAR

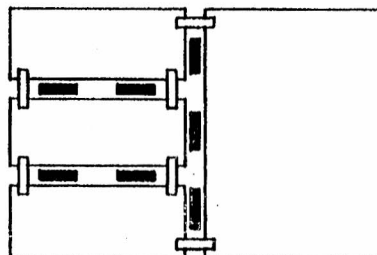
REAR LOCK LINKS



4-VERTICAL LOCK LINKS FRONT
2-VERTICAL LOCK LINKS REAR
4-HORIZONTAL LOCK LINKS FRONT
2-HORIZONTAL LOCK LINKS REAR



2-VERTICAL LOCK LINKS FRONT
2-VERTICAL LOCK LINKS REAR
8-HORIZONTAL LOCK LINKS FRONT
2-HORIZONTAL LOCK LINKS REAR



4-VERTICAL LOCK LINKS FRONT
4-VERTICAL LOCK LINKS REAR
6-HORIZONTAL LOCK LINKS FRONT
2-HORIZONTAL LOCK LINKS REAR



**LOCK LINK KIT
VERTICAL AND HORIZONTAL**
HP PART NUMBER 5061-9694

Vertical and horizontal lock link hardware is used for locking together various bench and rack mountable combinations of full and sub module cabinets of equal depths. Sufficient horizontal links (12 front, 8 rear) to form three side by side joints up to 4 sub module instrument, and sufficient vertical links (4 front, 4 rear) to form two sets of over-under joinings are supplied.*

CONTENTS

QTY.	PART NO.
4	VERTICAL LOCK LINK, FRONT..... 1600-1423
8	M3.5 x 0.6 x 6 PAN HEAD..... 0515-0887
4	VERTICAL LOCK LINK, REAR..... 0050-2168
8	M3.5 x 0.6 x 12(190°)FLAT HEAD (PLASTIC MOD)..... 0515-1235
8	M3.5 x 0.6 x 8(190°)FLAT HEAD (METAL MOD)..... 0515-1234
12	HORIZONTAL LOCK LINK, FRONT..... 0050-2166
12	M4 x 0.7 x 6(190°)FLAT HEAD..... 0515-1055
6	HORIZONTAL LOCK LINK, REAR..... 0050-2167
12	M3.5 x 0.6 x 12(190°)FLAT HEAD (PLASTIC MOD)..... 0515-1235
12	M3.5 x 0.6 x 8(190°)FLAT HEAD (METAL MOD)..... 0515-1234

CAUTION

THIS KIT CONTAINS ONLY METRIC HARDWARE. IF INCH HARDWARE IS NEEDED ORDER INCH HARDWARE KIT #5062-4076. Please verify the 'Inch' front or rear frame as follows:
'Inch' Front or Rear Frame 5020.....
'Metric' Front or Rear Frame Metric

(*These are diecast into the top and rear of the frames)

INSTRUCTIONS

Vertical Locking

1. Remove top trim strip from the bottom instrument front frame.
2. Attach front vertical lock links to bottom instrument front frame using 2 M3.5 x 0.6 pan hd screws per link.
3. Slide top cabinet back to lock front frames together.
4. Attach rear vertical lock links over appropriate rear bosses using 2 M3.5 x 0.6 Flat Head Machine screws per link.

Horizontal Locking

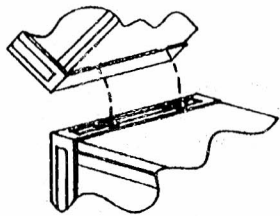
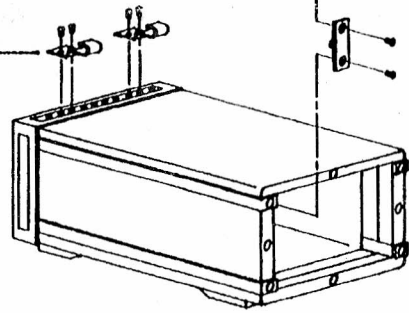
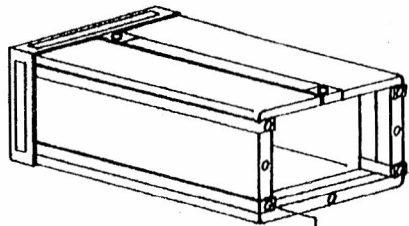
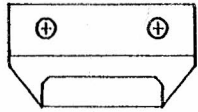
1. Remove appropriate side trim strips.
2. Attach front horizontal lock links to front frames using 1 M4 x 0.7 Flat Head Machine screw per link. Opposing links* must be installed to interlock.
3. Press cabinets together, slide left cabinet back to lock front frames.
4. Attach rear horizontal lock links over appropriate rear bosses using 2 M3.5 x 0.6 Flat Head Machine screws per link.

*Locking cabinets together horizontally in a configuration wider than 1 full module width or locking more than two sub modules vertically is not recommended.

MADE IN USA 7/90
LABEL NO. 5958-33



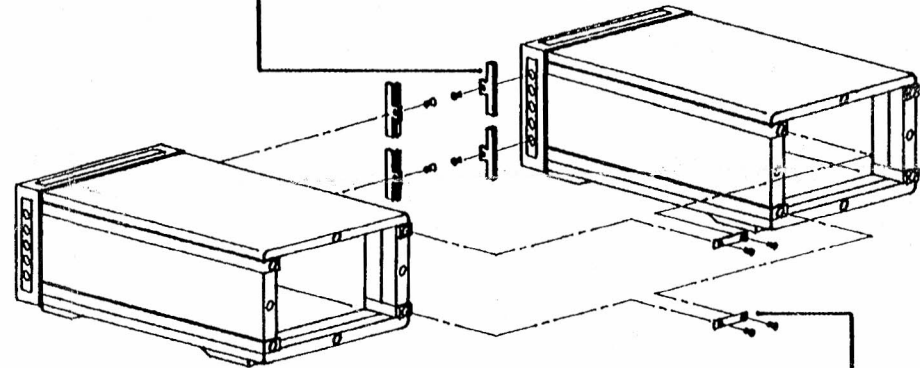
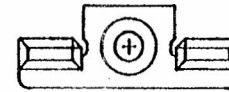
VERTICAL LOCK LINK, FRONT
HP PART NUMBER 1600-1423



VERTICAL LOCK LINK, REAR
HP PART NUMBER 0050-2168



HORIZONTAL LOCK LINK, FRONT
HP PART NUMBER 0050-2166



HORIZONTAL LOCK LINK, REAR
HP PART NUMBER 0050-2167

