

Spectrum Analyzer

2394A 1 kHz to 13.2 GHz Spectrum Analyzer



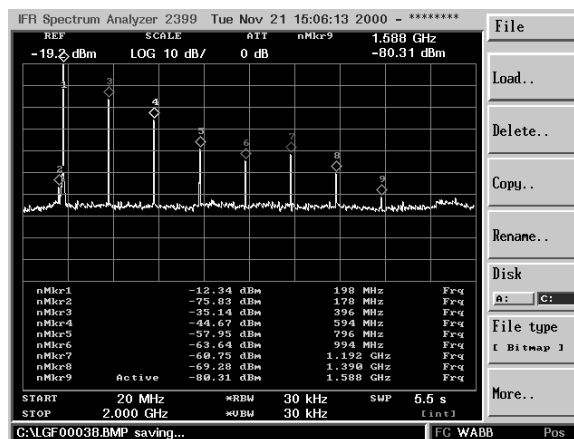
A spectrum analyzer with outstanding performance and a user friendly visual interface simplifying many complex measurements

- 1 kHz to 13.2 GHz fully synthesized frequency range
- Lightweight, portable and rugged construction at 12 kg (26.5 lbs)
- Excellent TFT color display
- Comprehensive marker facility
- Wide input signal range +30 dBm to -110 dBm
- Semi-automated measurements
- USB 2.0 interface
- Extremely user friendly MMI reduces risk of operator error
- Auto-tune facility
- GPIB as standard
- AM/FM demodulation
- Internal pre-amplifier

Color Display

The 6.4 inch TFT color LCD in the 2394A provides a clear, bright, sharp display with a 640 x 480 pixel active display area viewable in high ambient light conditions.

Comprehensive Marker System



Marker Table

The marker system allows up to a maximum of 9 markers to be displayed on the screen at any one time. A marker table shows the frequency and level of each marker selected thus allowing multiple signals to be evaluated simultaneously. In addition to the Normal markers 2394A provides Delta, Peak Search, Peak Track, 1/Delta, Marker Track, Marker to Center and Marker to Reference capabilities.

Measurement Limits

The Limits facility allows an Upper and/or a Lower Limit to be set on the screen of the 2394A. Should the signal being displayed fall outside either limit a message will appear on the screen showing which limit has been exceeded and how many times this has happened.

A Value for Money Product

The 2394A is the latest in the range of spectrum analyzers from Aeroflex providing exceptional performance at an exceptional price.

Frequency Accuracy

The local oscillator system in the 2394A is fully synthesized thus providing accurate frequency measurements with 1 Hz resolution.

Portability

With a weight of only 12 kg (26.5 lbs) the 2394A is one of the lightest microwave spectrum analyzers available. A truly portable unit!

Wide Signal Measurement Range

The 50 Ohm input on the 2394A can accept signals between +30 dBm and -110 dBm while providing protection to ± 50 VDC.

Semi-Automated Measurements

The MMI on the 2394A has been designed to simplify many of the measurements required for the evaluation of today's sophisticated communications systems. These include Adjacent Channel Power, X dB Down, Occupied Bandwidth, Channel Power, Harmonic Distortion.

Auto-tune Function

Use of this function allows an unknown signal to be quickly captured and displayed on the screen. The 2394A will search its complete frequency range for the highest level signal, capture it, display it in the center of the screen with both the span and resolution bandwidths being automatically set to the optimal state for best viewing.

Spectral Purity

The phase noise on 2394A is specified at -90 dBc at 10 kHz offset which allows its use for evaluating the spectral purity and noise performance of systems and sub-systems.

Signal Demodulation

Demodulation of both AM and FM signals allows full testing on a wide range of communications systems. The demodulated signal can be viewed on the screen and is also available on the internal loud-speaker and on headphones via a connector on the front panel. The FM peak deviation and AM modulation depth can be measured using the markers provided in the 2394A.

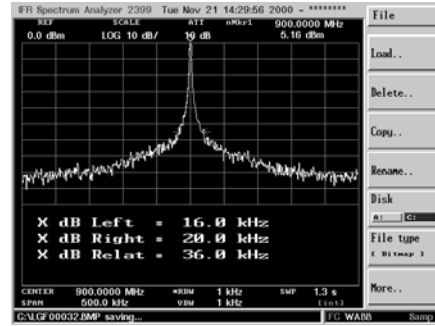
Information Storage

The 2394A is provided with the capability of internally storing up to 1,000 screen traces and 2,000 operational states. The spectrum analyzer is also fitted with a USB 2.0 interface for download to bulk storage.

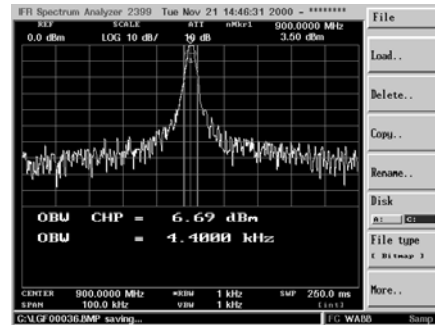
Interfaces

IEEE 488-2, RS-232 and Printer (PCL5) interfaces are provided as standard on the 2394A allowing its integration into automated test systems and the print-out of screen displays.

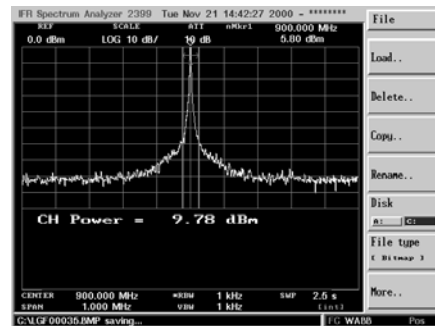
The 2394A has been designed with future flexibility and expansion in mind. The operating system and system memory has the capability to have additional facilities incorporated.



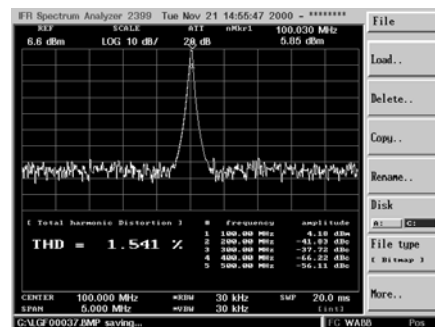
X dB Down



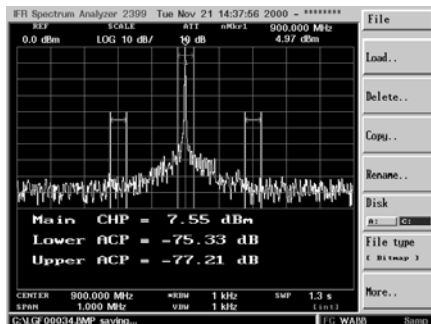
Occupied Bandwidth



Channel Power



Harmonic Distortion



Adjacent Channel Power

SPECIFICATION

FREQUENCY

Tuning Range

1 kHz to 13.2 GHz

Range	Band
1 kHz to 3 GHz	0
2.9 GHz to 6.4 GHz	1
6.3 GHz to 13.2 GHz	2

All ranges employ fundamental mixing.

Resolution

1 Hz

Frequency Span Width

100 Hz/div to 1000 MHz/div in 1, 2, 5 step selections (auto-selected)

Zero span and Full span (1 kHz to 13.2 GHz)

Manual selection of Start, Stop and Span

Span Accuracy

$< \pm 3\%$ of indicated span width

Readout Accuracy

\pm (Span Accuracy + Frequency Standard Accuracy + 50% of RBW)

Stability

Residual FM < 100 Hz p-p at 1 kHz RBW, 1 kHz VBW,

(p-p in 200 ms)

Noise Sidebands

< -90 dBc/Hz at 10 kHz offset measured at 2.9 GHz

-98 dBc/Hz at 100 kHz offset measured at 2.9 GHz

FREQUENCY COUNTER

Resolution

1 Hz, 10 Hz, 100 Hz and 1 kHz

Accuracy

\pm (Reference frequency error + frequency readout accuracy + counter resolution ± 1 count)

Sensitivity

< -70 dBm from 50 kHz to 13.2 GHz

AMPLITUDE

Measurement Range

+30 dBm to -110 dBm

Displayed Average Noise Level (DANL)

300 Hz RBW, 10 Hz VBW, 50 Ω termination

-105 dBm @ 50 kHz to 100 kHz

-110 dBm @ 100 kHz to 2.8 GHz

-105 dBm @ 2.8 GHz to 3 GHz

-115 dBm @ 3 GHz to 13.2 GHz

Pre-amp On

-115 dBm @ 50 kHz to 100 kHz

-130 dBm @ 100 kHz to 1.8 GHz

-129 dBm @ 1.8 GHz to 3 GHz

1 dB Compression Point

> -10 dBm, 100 kHz to 13.2 GHz at 0 dB attenuation

Displayed Range

100 dB in 10 dB/div log scale

50 dB in 5 dB/div log scale

20 dB in 2 dB/div log scale

10 dB in 1 dB/div log scale 10 divisions with linear amplitude scale

Amplitude Units

Log scale mode dBm and dBmV. Linear scale mode V (μ V, mV, etc.) or dBV (dBmV only) Quasi Peak mode dB μ V, dBmV or dBm

Display Linearity

5 and 10 dB/div, ± 0.1 dB/dB, ± 1.0 dB over 10 divisions

1 and 2 dB/div, ± 0.5 dB over 10 divisions

Linear, $\pm 10\%$ of Reference Level over 10 divisions

Frequency Response

1 kHz to 5 MHz -3 dB to $+1$ dB

5 MHz to 2.9 GHz $\leq \pm 1.0$ dB

2.9 GHz to 6.4 GHz $< \pm 1.5$ dB

6.4 GHz to 13.2 GHz $< \pm 2.2$ dB

ATTENUATOR

Range

0 dB to 55 dB in 5 dB steps selected manually or automatically coupled to the Reference Level

Accuracy

± 0.5 dB/step up to ± 1.5 dB maximum

REFERENCE LEVEL

Range

-110 dBm to $+30$ dBm with 1 kHz filter using 1 dB/div scale

Accuracy

± 1.0 dB (50 kHz to 13.2 GHz)

Resolution

0.1 dB steps

Residual Spurious

-85 dBm (input terminated, 0 dB attenuation)

Harmonic Distortion

-60 dBc (-40 dBm input at 0 dB attenuation)

Intermodulation Distortion

-70 dBc 100 MHz to 13.2 GHz

-65 dBc 1 MHz to 100 MHz (at -30 dBm input, 0 dB input attenuation)

Other Spurious

-60 dBc (10 MHz to 13.2 GHz at -30 dBm)

RESOLUTION BANDWIDTH

Selection

-300 Hz, 1 kHz, 3 kHz, 10 kHz, 30 kHz, 100 kHz, 300 kHz, 1 MHz, 3 MHz

9 kHz and 120 kHz (Quasi-Peak Detector, Option 4)

100 Hz, 30 Hz, 10 Hz (Digital Resolution Bandwidth, Option 5)

Accuracy

$\pm 10\%$ (Digital Resolution Bandwidth, Option 5)

$\pm 20\%$

Selectivity

60 dB/3 dB ratio <15:1
except 3 MHz filter 50 dB/3 dB ratio <15:1
60 dB/6 dB ratio <12:1 for 9 kHz and 120 kHz Quasi Peak filters

Switching Error

<±1.0 dB referred to 3 kHz resolution bandwidth

Video Bandwidth

1 Hz to 1 MHz in 1-3-10 sequence plus full BW

SWEEP

Rate (full screen)

20 ms to 1000 s in 1-2-5 sequence, 25 μs to 100 s in Zero Span

Sweep Rate Accuracy

<±20% for <100 ms, ±10 % for all other sweep rates

Trigger Source

External, Line, Video, Free run

Trigger Modes

Continuous, Single

Trigger Level

Internal Trigger: Adjustable over 10 divisions External Trigger (Rear): TTL Level

Trigger Delay

± One sweep time

DISPLAY

Type

6.4 inch TFT Color LCD

Digital Resolution

640 H x 480 V active display area

MARKERS

Number

Up to 9 colored Markers available plus Delta Marker

Modes

Normal, Delta, Peak Search, Peak Track, 1/Delta, Marker Track, Marker to Center, Marker to Reference, All Markers to peak

Marker

Marker Track, Marker to Center, Marker to Reference, Marker to Peak

MEMORY

Trace storage

Up to 1,000 stored traces stored internally

Setup Storage

Up to 2,000 operational states stored internally

External

USB 2.0 interface for bulk storage (USB 1.1 compatible)

Display Traces

2 maximum

INPUTS

RF Input

Type "N" 50 Ohm female connector

Input VSWR

Band 0: ≤1.5 : 1 with 10 dB Input Attenuation

Band 1: ≤1.4 : 1 with 10 dB Input Attenuation

Band 2: ≤1.4 : 1 with 10 dB Input Attenuation

Maximum Input

+30 dBm with 10 dB attenuation, 50 VDC

LO Emissions

-70 dBm with 0 dB attenuation

OUTPUTS

IF Output

10.7 MHz nominal

Video Output

0 to 5 VDC, VGA output

Printer Drivers

PCL5 compatible via standard 25 pin female D-Sub Parallel Printer

Probe Power

+15 V, -12 V and Ground

FREQUENCY STANDARD

Frequency

10 MHz

Output Level

+5 dBm nominal

Temperature Stability

<±0.2 ppm/0°C to 40°C

Aging Rate

<±1 ppm/yr

Connector

BNC female

External Input

-5 dBm to +15 dBm

INTERFACES

GPIB

Conforms to IEEE 488.1 – 1987, 488.2 – 1992

Subsets

SH1, AH1, T6, L4, SR1, RL1, PP0, DC1, CO, LEO, TEO

RS-232C

Full Duplex

Baud Rate

110 bps, 300 bps, 600 bps, 1200 bps, 2400 bps, 4800 bps, 9600 bps, 19.2 kbps, 38.4 kbps, 57.6 kbps, 115.2 kbps

Parity Check

Odd, Even or None

Data Length

7 bit or 8 bit selectable

Stop Bits

1 bit or 2 bit

Protocol

None, Xon-Xoff, RTS-CTS, DTR-DSR

ENVIRONMENTAL

Operating

0 to 40°C

Storage

-20 to +60°C

Temperature & Humidity

Meets MIL-T-28800E for Type 2, Class 5, non-condensing (85% operating, 90% storage)

Vibration/Shock

Meets MIL-T-28800E for Type 2, Class 5

Altitude

Operational up to 3,000 m (19,842 ft.), non-operational to 12,200 m (40,026 ft.).

PRODUCT SAFETY

Conforms to EN61010-1 for Class 1 portable equipment and is for use in a pollution degree 2 environment. The instrument is designed to operate from an Installation Category II.

ELECTROMAGNETIC COMPATABILITY

Complies with the limits specified in the following standards:
EN 55011: Class A and EN 50082-1

GENERAL CHARACTERISTICS

DIMENSIONS

350 mm (13.78 in.) W, 185 mm (7.28 in.) H, 395 mm (15.5 in.) D including handle

Weight

<12 kg/26.5 lbs (without options)

Warm-up Time

15 minutes for specified accuracy

POWER REQUIREMENTS

Voltage

100 to 240 VAC \pm 10%

Frequency

50 to 60 Hz

Power Consumption

100 W max (without options fitted)

HARDWARE OPTIONS

HIGH STABILITY TIMEBASE (OPTION 03)

Temperature Stability

< \pm 0.2 ppm/°C 0°C to 40°C

Ageing Rate

< \pm 0.1 ppm/yr

QUASI-PEAK DETECTOR (OPTION 04)

Quasi-Peak detector and EMC filters

RBW	9 kHz Band B	120 kHz Band C
Frequency Range	150 kHz to 30 MHz	30 MHz to 1 GHz
Charge Time (ms)	1 \pm 20%	1 \pm 20%
Discharge Time (ms)	160 \pm 20%	550 \pm 20%
Display Time (ms)	160 \pm 20%	100 \pm 20%

DIGITAL RESOLUTION BANDWIDTH FILTERS (OPTION 05)

Bandwidths

100 Hz, 30 Hz, 10 Hz

Bandwidth accuracy

\pm 20%

Selectivity (-60 dB/-3 dB)

<5:1

Maximum span

1 MHz

Sweep times for 10 kHz span

RBW	100 Hz	<0.9 sec
	30 Hz	<3 sec
	10 Hz	<4.5 sec

Displayed Average Noise Levels (DANL) between 1 MHz and 13.2 GHz reduces DANL by typically 5 dB from the values in the 300 Hz resolution bandwidth filter.

AC/DC POWER SUPPLY (OPTION 6)

DC Voltage

12 VDC to 21 VDC

External Battery

14.4 VDC @ 7 AH

SOFTWARE OPTIONS

MARKER LABEL EDIT (OPTION 12)

This software option allows the user to change the marker label from the normal numeric format to a user defined 4-digit alpha-numeric label.

EMC ANALYZER SOFTWARE (OPTION 13)

This software option, which must be used in conjunction with Option 04 (Quasi-peak detectors and filters) provides the user with some of the facilities required for EMC pre-compliance testing. Features include:

Entry of correction factors for: Test Antenna
 Cable loss
 Transducer characteristics

Addition of limit lines
Choice of Log or Linear frequency scales
Semi-automated operation of quasi-peak functions
Upto 3 GHz
Radiated, conducted emissions

VERSIONS, OPTIONS AND ACCESSORIES

When ordering please quote the full ordering number information.

Ordering

Numbers

2394A/0

Versions

1 kHz to 13.2 GHz spectrum analyzer

Options

03

High stability timebase

04

Quasi-peak detectors and filters

05

Digital resolution bandwidth filters

06

AC/DC power supply

12

Marker label edit software

13

EMC analyzer software

Supplied Accessories

Front cover

CD ROM Containing: Operation manual and Programming manual

AC supply lead

RS-232 cable

2 x 250 V, 3.15 A fuses

Optional Accessories

Maintenance manual

AC2621

Rack mount kit

AC5008

DC block N type

80010

Soft carry case

For the very latest specifications visit www.aeroflex.com

CHINA Beijing

Tel: [+86] (10) 6539 1166
Fax: [+86] (10) 6539 1778

CHINA Shanghai

Tel: [+86] (21) 5109 5128
Fax: [+86] (21) 5150 6112

FINLAND

Tel: [+358] (9) 2709 5541
Fax: [+358] (9) 804 2441

FRANCE

Tel: [+33] 1 60 79 96 00
Fax: [+33] 1 60 77 69 22

GERMANY

Tel: [+49] 8131 2926-0
Fax: [+49] 8131 2926-130

HONG KONG

Tel: [+852] 2832 7988
Fax: [+852] 2834 5364

INDIA

Tel: [+91] 80 5115 4501
Fax: [+91] 80 5115 4502

KOREA

Tel: [+82] (2) 3424 2719
Fax: [+82] (2) 3424 8620

SCANDINAVIA

Tel: [+45] 9614 0045
Fax: [+45] 9614 0047

SPAIN

Tel: [+34] (91) 640 11 34
Fax: [+34] (91) 640 06 40

UK Burnham

Tel: [+44] (0) 1628 604455
Fax: [+44] (0) 1628 662017

UK Cambridge

Tel: [+44] (0) 1763 262277
Fax: [+44] (0) 1763 285353

UK Stevenage

Tel: [+44] (0) 1438 742200
Fax: [+44] (0) 1438 727601
Freephone: 0800 282388

USA

Tel: [+1] (316) 522 4981
Fax: [+1] (316) 522 1360
Toll Free: 800 835 2352

As we are always seeking to improve our products, the information in this document gives only a general indication of the product capacity, performance and suitability, none of which shall form part of any contract. We reserve the right to make design changes without notice. All trademarks are acknowledged. Parent company Aeroflex, Inc. ©Aeroflex 2006.

www.aeroflex.com
info-test@aeroflex.com



Our passion for performance is defined by three attributes represented by these three icons: solution-minded, performance-driven and customer-focused.

Part No. 46891/141, Issue 7, 01/08