

**KEITHLEY**

# Model 2701 Instrument Networking Instruction Manual

A GREATER MEASURE OF CONFIDENCE



---

# WARRANTY

Keithley Instruments, Inc. warrants this product to be free from defects in material and workmanship for a period of 3 years from date of shipment.

Keithley Instruments, Inc. warrants the following items for 90 days from the date of shipment: probes, cables, rechargeable batteries, diskettes, and documentation.

During the warranty period, we will, at our option, either repair or replace any product that proves to be defective.

To exercise this warranty, write or call your local Keithley representative, or contact Keithley headquarters in Cleveland, Ohio. You will be given prompt assistance and return instructions. Send the product, transportation prepaid, to the indicated service facility. Repairs will be made and the product returned, transportation prepaid. Repaired or replaced products are warranted for the balance of the original warranty period, or at least 90 days.

## LIMITATION OF WARRANTY

This warranty does not apply to defects resulting from product modification without Keithley's express written consent, or misuse of any product or part. This warranty also does not apply to fuses, software, non-rechargeable batteries, damage from battery leakage, or problems arising from normal wear or failure to follow instructions.

**THIS WARRANTY IS IN LIEU OF ALL OTHER WARRANTIES, EXPRESSED OR IMPLIED, INCLUDING ANY IMPLIED WARRANTY OF MERCHANTABILITY OR FITNESS FOR A PARTICULAR USE. THE REMEDIES PROVIDED HEREIN ARE BUYER'S SOLE AND EXCLUSIVE REMEDIES.**

NEITHER KEITHLEY INSTRUMENTS, INC. NOR ANY OF ITS EMPLOYEES SHALL BE LIABLE FOR ANY DIRECT, INDIRECT, SPECIAL, INCIDENTAL OR CONSEQUENTIAL DAMAGES ARISING OUT OF THE USE OF ITS INSTRUMENTS AND SOFTWARE EVEN IF KEITHLEY INSTRUMENTS, INC., HAS BEEN ADVISED IN ADVANCE OF THE POSSIBILITY OF SUCH DAMAGES. SUCH EXCLUDED DAMAGES SHALL INCLUDE, BUT ARE NOT LIMITED TO: COSTS OF REMOVAL AND INSTALLATION, LOSSES SUSTAINED AS THE RESULT OF INJURY TO ANY PERSON, OR DAMAGE TO PROPERTY.

## KEITHLEY

Keithley Instruments, Inc.

28775 Aurora Road • Cleveland, Ohio 44139 • 440-248-0400 • Fax: 440-248-6168  
1-888-KEITHLEY (534-8453) • [www.keithley.com](http://www.keithley.com)

Sales Offices: BELGIUM:

Bergensesteenweg 709 • B-1600 Sint-Pieters-Leeuw • 02-363 00 40 • Fax: 02-363 00 64

CHINA:

Yuan Chen Xin Building, Room 705 • 12 Yumin Road, Dewai, Madian • Beijing 100029 • 8610-82251886 • Fax: 8610-82251892

FINLAND:

Halsuantie 2 • 00420 Helsinki, Finland • 09-53 06 65 60 • Fax: 09-53 06 65 65

FRANCE:

3, allée des Garays • 91127 Palaiseau Cédex • 01-64 53 20 20 • Fax: 01-60 11 77 26

GERMANY:

Landsberger Strasse 65 • 82110 Germering • 089-84 93 07-40 • Fax: 089-84 93 07-34

GREAT BRITAIN:

Unit 2 Commerce Park, Brunel Road • Theale, Berkshire RG7 4AB • 0118-929 75 00 • Fax: 0118-929 75 19

INDIA:

1/5, Eagles Street • Langford Town • Bangalore 560 025 • 080 212 80-27 • Fax: 080 212 80 05

ITALY:

Viale San Gimignano, 38 • 20146 Milano • 02-48 39 16 01 • Fax: 02-48 30 22 74

JAPAN:

New Pier Takeshiba North Tower 13F • 11-1, Kaigan 1-chome • Minato-ku, Tokyo 105-0022 • 81-3-5733-7555 • Fax: 81-3-5733-7556

KOREA:

2FL., URI Building • 2-14 Yangjae-Dong • Seocho-Gu, Seoul 137-888 • 82-2-574-7778 • Fax: 82-2-574-7838

NETHERLANDS:

Postbus 559 • 4200 AN Gorinchem • 0183-63 53 33 • Fax: 0183-63 08 21

SWEDEN:

c/o Regus Business Centre • Frosundaviks Allé 15, 4tr • 16970 Solna • 08-50 90 46 00 • Fax: 08-655 26 10

TAIWAN:

13F-3, NO. 6, Lane 99, Pu-Ding Road, Hsinchu, Taiwan, ROC. • 886-3-572-9077 • Fax: 886-3-572-9031

---

# Model 2701 Instrument Networking Instruction Manual

©2002, Keithley Instruments, Inc.  
All rights reserved.  
Cleveland, Ohio, U.S.A.  
Second Printing, August 2003  
Document Number: 2701-904-01 Rev. B

---

# Manual Print History

The print history shown below lists the printing dates of all Revisions and Addenda created for this manual. The Revision Level letter increases alphabetically as the manual undergoes subsequent updates. Addenda, which are released between Revisions, contain important change information that the user should incorporate immediately into the manual. Addenda are numbered sequentially. When a new Revision is created, all Addenda associated with the previous Revision of the manual are incorporated into the new Revision of the manual. Each new Revision includes a revised copy of this print history page.

Revision A (Document Number 2701-904-01) .....	July 2002
Revision B (Document Number 2701-904-01) .....	August 2003

The following safety precautions should be observed before using this product and any associated instrumentation. Although some instruments and accessories would normally be used with non-hazardous voltages, there are situations where hazardous conditions may be present.

This product is intended for use by qualified personnel who recognize shock hazards and are familiar with the safety precautions required to avoid possible injury. Read and follow all installation, operation, and maintenance information carefully before using the product. Refer to the manual for complete product specifications.

If the product is used in a manner not specified, the protection provided by the product may be impaired.

The types of product users are:

**Responsible body** is the individual or group responsible for the use and maintenance of equipment, for ensuring that the equipment is operated within its specifications and operating limits, and for ensuring that operators are adequately trained.

**Operators** use the product for its intended function. They must be trained in electrical safety procedures and proper use of the instrument. They must be protected from electric shock and contact with hazardous live circuits.

**Maintenance personnel** perform routine procedures on the product to keep it operating properly, for example, setting the line voltage or replacing consumable materials. Maintenance procedures are described in the manual. The procedures explicitly state if the operator may perform them. Otherwise, they should be performed only by service personnel.

**Service personnel** are trained to work on live circuits, and perform safe installations and repairs of products. Only properly trained service personnel may perform installation and service procedures.

Keithley products are designed for use with electrical signals that are rated Measurement Category I and Measurement Category II, as described in the International Electrotechnical Commission (IEC) Standard IEC 60664. Most measurement, control, and data I/O signals are Measurement Category I and must not be directly connected to mains voltage or to voltage sources with high transient over-voltages. Measurement Category II connections require protection for high transient over-voltages often associated with local AC mains connections. Assume all measurement, control, and data I/O connections are for connection to Category I sources unless otherwise marked or described in the Manual.

Exercise extreme caution when a shock hazard is present. Lethal voltage may be present on cable connector jacks or test fixtures. The American National Standards Institute (ANSI) states that a shock hazard exists when voltage levels greater than 30V RMS, 42.4V peak, or 60VDC are present. **A good safety practice is to expect that hazardous voltage is present in any unknown circuit before measuring.**

Operators of this product must be protected from electric shock at all times. The responsible body must ensure that operators are prevented access and/or insulated from every connection point. In some cases, connections must be exposed to potential human contact. Product operators in these circumstances must be trained to protect themselves from the risk of electric shock. If the circuit is capable of operating at or above 1000 volts, **no conductive part of the circuit may be exposed.**

Do not connect switching cards directly to unlimited power circuits. They are intended to be used with impedance limited sources. NEVER connect switching cards directly to AC mains. When connecting sources to switching cards, install protective devices to limit fault current and voltage to the card.

Before operating an instrument, make sure the line cord is connected to a properly grounded power receptacle. Inspect the connecting cables, test leads, and jumpers for possible wear, cracks, or breaks before each use.

When installing equipment where access to the main power cord is restricted, such as rack mounting, a separate main input power disconnect device must be provided, in close proximity to the equipment and within easy reach of the operator.

For maximum safety, do not touch the product, test cables, or any other instruments while power is applied to the circuit under test. ALWAYS remove power from the entire test system and discharge any capacitors before: connecting or disconnecting

cables or jumpers, installing or removing switching cards, or making internal changes, such as installing or removing jumpers. Do not touch any object that could provide a current path to the common side of the circuit under test or power line (earth) ground. Always make measurements with dry hands while standing on a dry, insulated surface capable of withstanding the voltage being measured.


The instrument and accessories must be used in accordance with its specifications and operating instructions or the safety of the equipment may be impaired.


Do not exceed the maximum signal levels of the instruments and accessories, as defined in the specifications and operating information, and as shown on the instrument or test fixture panels, or switching card.


When fuses are used in a product, replace with same type and rating for continued protection against fire hazard.


Chassis connections must only be used as shield connections for measuring circuits, NOT as safety earth ground connections.

If you are using a test fixture, keep the lid closed while power is applied to the device under test. Safe operation requires the use of a lid interlock.

If a  screw is present, connect it to safety earth ground using the wire recommended in the user documentation.

The  symbol on an instrument indicates that the user should refer to the operating instructions located in the manual.

The  symbol on an instrument shows that it can source or measure 1000 volts or more, including the combined effect of normal and common mode voltages. Use standard safety precautions to avoid personal contact with these voltages.

The  symbol indicates a connection terminal to the equipment frame.

The **WARNING** heading in a manual explains dangers that might result in personal injury or death. Always read the associated information very carefully before performing the indicated procedure.

The **CAUTION** heading in a manual explains hazards that could damage the instrument. Such damage may invalidate the warranty.

Instrumentation and accessories shall not be connected to humans.

Before performing any maintenance, disconnect the line cord and all test cables.

To maintain protection from electric shock and fire, replacement components in mains circuits, including the power transformer, test leads, and input jacks, must be purchased from Keithley Instruments. Standard fuses, with applicable national safety approvals, may be used if the rating and type are the same. Other components that are not safety related may be purchased from other suppliers as long as they are equivalent to the original component. (Note that selected parts should be purchased only through Keithley Instruments to maintain accuracy and functionality of the product.) If you are unsure about the applicability of a replacement component, call a Keithley Instruments office for information.

To clean an instrument, use a damp cloth or mild, water based cleaner. Clean the exterior of the instrument only. Do not apply cleaner directly to the instrument or allow liquids to enter or spill on the instrument. Products that consist of a circuit board with no case or chassis (e.g., data acquisition board for installation into a computer) should never require cleaning if handled according to instructions. If the board becomes contaminated and operation is affected, the board should be returned to the factory for proper cleaning/servicing.

# 2701 Ethernet Multimeter/Data Acquisition System

## DC CHARACTERISTICS<sup>1</sup>

CONDITIONS: MED (1 PLC)<sup>2</sup> or 10 PLC or MED (1 PLC) with Digital Filter of 10

FUNCTION	RANGE	RESOLUTION	TEST CURRENT ±5% OR BURDEN VOLTAGE	INPUT RESISTANCE OR OPEN CKT. VOLTAGE <sup>3</sup>	ACCURACY: ±(ppm of reading + ppm of range) (ppm = parts per million) e.g., 10ppm = 0.001%)			TEMPERATURE COEFFICIENT 0°-18°C & 28°-50°C
					24 Hour <sup>4</sup> 23°C±1°	90 Day 23°C±5°	1 Year 23°C±5°	
Voltage <sup>11</sup>	100.0000 mV	0.1 µV		>10 GΩ	15 + 30	25 + 35	30 + 35	(1 + 5)/°C
	1.000000 V	1.0 µV		>10 GΩ	15 + 6	25 + 7	30 + 7	(1 + 1)/°C
	10.0000 V	10 µV		>10 GΩ	10 + 4	20 + 5	30 + 5	(1 + 1)/°C
	100.0000 V	100 µV		10 MΩ ± 1%	15 + 6	35 + 9	45 + 9	(5 + 1)/°C
	1000.000 V <sup>5</sup>	1 mV		10 MΩ ± 1%	20 + 6	35 + 9	50 + 9	(5 + 1)/°C
Resistance <sup>6,8</sup>	100.0000 Ω	100 µΩ	1 mA	6.9 V	20 + 20	80 + 20	100 + 20	(8 + 1)/°C
	1.000000 kΩ	1 mΩ	1 mA	6.9 V	20 + 6	80 + 6	100 + 6	(8 + 1)/°C
	10.00000 kΩ	10 mΩ	100 µA	6.9 V	20 + 6	80 + 6	100 + 6	(8 + 1)/°C
	100.0000 kΩ	100 mΩ	10 µA	12.8 V	20 + 6	80 + 10	100 + 10	(8 + 1)/°C
	1.000000 MΩ	1.0 Ω	10 µA	12.8 V	20 + 6	80 + 10	100 + 10	(8 + 1)/°C
	10.00000 MΩ <sup>7</sup>	10 Ω	0.7 µA // 10MΩ	7.0 V	150 + 6	200 + 10	400 + 10	(70 + 1)/°C
	100.0000 MΩ <sup>7</sup>	100 Ω	0.7 µA // 10MΩ	7.0 V	800 + 30	2000 + 30	2000 + 30	(385 + 1)/°C
Continuity (2W) <sup>21</sup>	1.000 kΩ	100 mΩ	1 mA	6.9 V	40 + 100	100 + 100	100 + 100	(8 + 1)/°C
Current	20.00000 mA	10 nA	<0.2 V		60 + 30	300 + 80	500 + 80	(50 + 5)/°C
	100.0000 mA	100 nA	<0.1 V		100 + 300	300 + 800	500 + 800	(50 + 50)/°C
	1.000000 A	1.0 µA	<0.5 V <sup>9</sup>		200 + 30	500 + 80	800 + 80	(50 + 5)/°C
	3.000000 A	10 µA	<1.5 V <sup>9</sup>		1000 + 15	1200 + 40	1200 + 40	(50 + 5)/°C
Channel (Ratio) <sup>10</sup>	Ratio Accuracy = Accuracy of selected Channel Range + Accuracy of Paired Channel Range							
Channel (Average) <sup>10</sup>	Average Accuracy = Accuracy of selected Channel Range + Accuracy of Paired Channel Range							

## TEMPERATURE<sup>19</sup>

(Display in °C, °F, or K. Exclusive of probe errors.)

Thermocouples (Accuracy based on ITS-90.)

Type	Range	Resolution	90 Day/1 Year (23°C ±5°C)		
			Relative to Simulated Reference Junction	Using 77XX Module	Temperature Coefficient 0°-18°C & 28°-50°C
J	-200 to +760°C	0.001°C	0.2°C	1.0°C	0.03°C/°C
K	-200 to +1372°C	0.001°C	0.2°C	1.0°C	0.03°C/°C
N	-200 to +1300°C	0.001°C	0.2°C	1.0°C	0.03°C/°C
T	-200 to +400°C	0.001°C	0.2°C	1.0°C	0.03°C/°C
E	-200 to +1000°C	0.001°C	0.2°C	1.0°C	0.03°C/°C
R	0 to +1768°C	0.1°C	0.6°C	1.8°C	0.03°C/°C
S	0 to +1768°C	0.1°C	0.6°C	1.8°C	0.03°C/°C
B	+350 to +1820°C	0.1°C	0.6°C	1.8°C	0.03°C/°C

4-Wire RTD:

(100Ω platinum [PT100], D100, F100, PT385, PT3916, or user type, Offset compensation On)

-200° to 630°C	0.01°C	0.06°C	0.003°C/°C
----------------	--------	--------	------------

Thermistor: (2.2kΩ, 5kΩ, and 10kΩ)<sup>20</sup>

-80° to 150°C	0.01°C	0.08°C	0.002°C/°C
---------------	--------	--------	------------

## DC SYSTEM SPEEDS<sup>15,18</sup>

RANGE CHANGES<sup>16</sup>: 50/s (42/s) (excludes 4 Wire Ohms).

FUNCTION CHANGES<sup>16</sup>: 50/s (42/s).

AUTORANGE TIME<sup>16</sup>: <30ms.

ASCII READINGS TO RS-232 (115.2k BAUD): 300/s.

MAX. INTERNAL TRIGGER RATE: 2800/s.

MAX. EXTERNAL TRIGGER RATE: 2000/s.

## DC MEASUREMENT SPEEDS<sup>15</sup>

Single Channel, 60Hz (50Hz) Operation

FUNCTION	DIGITS	READINGS/s	PLCs
DCV, DCI, Ω (<10M), Thermocouple, Thermistor	6.5 <sup>12,16</sup>	5 (4)	10
	6.5 <sup>16</sup>	35 (24)	1
	6.5 <sup>12,16</sup>	50 (48)	1
	5.5 <sup>12,16</sup>	150 (120)	0.1
	5.5 <sup>16,17</sup>	300 (240)	0.1
	5.5 <sup>17</sup>	500 (400)	0.1
4WΩ (<10M)	4.5 <sup>17</sup>	3000 (3000)	0.006
	3.5 <sup>17</sup>	3500 (3500)	0.002
	6.5 <sup>16</sup>	1.4 (1.1)	10
	6.5 <sup>16</sup>	15 (12)	1
4WΩ 0Comp, RTD	5.5 <sup>16,17</sup>	33 (25)	0.1
	6.5 <sup>16,17</sup>	0.9 (0.7)	10
	6.5 <sup>16,17</sup>	8 (6.4)	1
Channel (Ratio), Channel (AVG)	5.5 <sup>16,17</sup>	18 (14.4)	0.1
	6.5 <sup>16,17</sup>	2.5 (2)	10
	6.5 <sup>16,17</sup>	15 (12)	1
	5.5 <sup>16,17</sup>	25 (20)	0.1

## Multiple Channels Into Memory<sup>15,18</sup>

7710 Scanning DCV	500/s
7710 Scanning with Limits or Time Stamp On	500/s
7710 Scanning DCV alternating 2WΩ	115/s
7710 Scanning Temperature (T/C)	500/s
7700 and 7708 Scanning Temperature (T/C)	80/s

## Multiple Channels Into and Out of Memory<sup>15,16,17,18</sup>

7710 Scanning DCV	440/s
7710 Scanning with Limits or Time Stamp On	440/s
7710 Scanning DCV alternating 2WΩ	110/s
7710 Scanning Temperature (T/C)	440/s
7700 and 7708 Scanning Temperature (T/C)	80/s
7702 Scanning DCV	75/s

# 2701 Ethernet Multimeter/Data Acquisition System

## DC SPEED vs. NOISE REJECTION

Rate	Filter	Readings/s <sup>12</sup>	Digits	RMS Noise		
				10V Range	NMRR	CMRR <sup>14</sup>
10	50	0.1 (0.08)	6.5	<2.5 $\mu$ V	110 dB <sup>13</sup>	140 dB
1	Off	15 (12)	6.5	<6 $\mu$ V	90 dB <sup>13</sup>	140 dB
0.1	Off	500 (400)	5.5	<40 $\mu$ V	-	80 dB
0.006	Off	3000 (3000)	4.5	<300 $\mu$ V	-	80 dB
0.002	Off	3500 (3500)	3.5	<1 mV	-	60 dB

## DC MEASUREMENT CHARACTERISTICS

### DC Volts

**A-D LINEARITY:** 2.0 ppm of reading + 1.0 ppm of range.

### INPUT IMPEDANCE:

**100mV-10V Ranges:** Selectable >10G $\Omega$ // with <400pF or 10M $\Omega$   $\pm$ 1%.

**100V, 1000V Ranges:** 10M $\Omega$   $\pm$ 1%.

**EARTH ISOLATION:** 500V peak, >10G $\Omega$  and <300pF any terminal to chassis.

**INPUT BIAS CURRENT:** <75pA at 23°C.

**COMMON MODE CURRENT:** <500nApp at 50Hz or 60Hz.

**AUTOZERO ERROR:** Add  $\pm$ (2ppm of range error +5 $\mu$ V) for <10 minutes and  $\pm$ 1°C.

**INPUT PROTECTION:** 1000V, all ranges, 300V with plug-in modules.

### Resistance

**MAX 4W $\Omega$  LEAD RESISTANCE:** 10% of range per lead for 100 $\Omega$  and 1k $\Omega$  ranges; 1k $\Omega$  per lead for all other ranges.

**OFFSET COMPENSATION:** Selectable on 4W $\Omega$  100 $\Omega$ , 1k $\Omega$ , and 10k $\Omega$  ranges.

**CONTINUITY THRESHOLD:** Adjustable 1 to 1000 $\Omega$ .

**INPUT PROTECTION:** 1000V, all Source Inputs, 350V Sense Inputs, 300V with plug-in modules.

### DC Current

**SHUNT RESISTORS:** 100mA-3A, 0.1 $\Omega$ . 20mA, 5 $\Omega$ .

**INPUT PROTECTION:** 3A, 250V fuse.

### Thermocouples

**CONVERSION:** ITS-90.

**REFERENCE JUNCTION:** Internal, External, or Simulated (Fixed).

**OPEN CIRCUIT CHECK:** Selectable per channel. Open >11.4k  $\pm$ 200 $\Omega$ .

## DC Notes

- 20% overrange except on 1000V and 3A.
- Add the following to "ppm of range" uncertainty; 100mV 15ppm, 1V and 100V 2ppm, 100 $\Omega$  30ppm, 1k $\rightarrow$ <1M $\Omega$  2ppm, 10mA and 1A 10ppm, 100mA 40ppm.
- $\pm$ 2% (measured with 10M $\Omega$  input resistance DMM, >10G $\Omega$  DMM on 10M $\Omega$  and 100M $\Omega$  ranges).
- Relative to calibration accuracy.
- For signal levels >500V, add 0.02ppm/V uncertainty for portion exceeding 500V.
- Specifications are for 4-wire  $\Omega$ , 100 $\Omega$  with offset compensation on, 77xx plug-in module with LSYNC and offset compensation on. With offset compensation on OPEN CKT. VOLTAGE is 12.8V. For 2-wire  $\Omega$  add 1.0 $\Omega$  to "ppm of range" uncertainty.
- Must have 10% matching of lead resistance in Input HI and LO.
- Add the following to "ppm of reading" uncertainty when using plug in modules:

	10 k $\Omega$	100 k $\Omega$	1 M $\Omega$	10 M $\Omega$	100 M $\Omega$
<b>All Modules:</b>				220 ppm	2200 ppm
<b>7701, 7703, 7707, and 7709 Modules:</b>	10 ppm	100 ppm	1000 ppm	1%	10%
<b>7706, 7708 Modules:</b>	5 ppm	50 ppm	500 ppm	5000 ppm	5%
<b>7710 Model 23°C <math>\pm</math>5°C:</b>	11 ppm	110 ppm	1100 ppm	1.1%	11%
<b>7710 Model Temp Coeff. &gt;28°C<math>\rightarrow</math>50°C:</b>	0.3 ppm/ $^{\circ}$ C	3 ppm/ $^{\circ}$ C	30 ppm/ $^{\circ}$ C	0.03%/ $^{\circ}$ C	0.3%/ $^{\circ}$ C

- Add 1.0V when used with plug-in modules.
- For RATIO, DCV only. For AVERAGE, DCV and Thermocouples only. Available with plug-in modules only.
- Add 6 $\mu$ V to "of range" uncertainty when using Models 7701, 7703, and 7707, 3 $\mu$ V for Models 7706, 7709, and 7710.
- Auto zero off.
- For LSYNC On, line frequency  $\pm$ 0.1%. For LSYNC Off, use 60dB for  $\geq$  1PLC.
- For 1k $\Omega$  unbalance in LO lead.
- Speeds are for 60Hz (50Hz) operation using factory defaults operating conditions (\*RST). Autorange off, Display off, Limits off, Trigger delay = 0.
- Speeds include measurements and data transfer out the ethernet (reading elements only). (100BaseT Ethernet, 3 meter RJ-45 crossover cable, PIII-800, Windows version 98 SE, VB version 6.0, direct Winsocket interface).
- Sample count = 1000 (into memory buffer), auto zero off.
- Auto zero off, NPLC = 0.002.
- Additional Uncertainty

Type	Range	7710 Module Using CJC
J	0 to +760°C	1.5°C
K	0 to +1372°C	—
N	0 to +1300°C	0.5°C
T	0 to +400°C	0.5°C
E	0 to +1000°C	0.5°C
R	+400 to +1768°C	0.9°C
S	+400 to +1768°C	0.9°C
B	+1100 to +1820°C	0.9°C

Type	Range	Front Terminals Sim. Ref. Junction	Plug-In Modules				
			7709 Sim. Ref. Junction	7701, 7703, 7707 Sim. Ref. Junction	7700 and 7708 Using CJC	7706 Using CJC	7710 Using CJC
J	-200 to 0°C	0.1	0.1	0.3	0.8	1.6	4.5
K	-200 to 0°C	0.2	0.2	0.4	0.8	1.6	1
N	-200 to 0°C	0.3	0.3	0.6	0.8	1.6	2.5
T	-200 to 0°C	0.2	0.1	0.4	0.8	1.6	2.5
E	-200 to 0°C	-	0.1	0.3	0.8	1.6	2.5
R	0 to +400°C	0.4	0.6	1.2	0.5	1.0	2.2
S	0 to +400°C	0.4	0.6	1.2	0.5	1.0	2.2
B	+350 to +1100°C	0.8	0.3	1.7	0.5	1.0	2.2

- For lead resistance >0 $\Omega$ , add the following uncertainty/ $\Omega$  for measurement temperatures of:

		70 $^{\circ}$ -100 $^{\circ}$ C	100 $^{\circ}$ -150 $^{\circ}$ C
<b>2.2 k<math>\Omega</math></b>	(44004)	0.22°C	1.11°C
<b>5.0 k<math>\Omega</math></b>	(44007)	0.10°C	0.46°C
<b>10 k<math>\Omega</math></b>	(44006)	0.04°C	0.19°C

- Front Panel resolution is limited to 0.1 $\Omega$ .



# 2701 Ethernet Multimeter/Data Acquisition System

## AC SPECIFICATIONS<sup>1</sup>

Function	Range	Resolution	Calibration Cycle	Accuracy: ±(% of reading + % of range), 23°C ±5°C				
				3 Hz-10 Hz <sup>14</sup>	10 Hz-20 kHz <sup>8</sup>	20 kHz-50 kHz	50 kHz-100 kHz	100 kHz-300 kHz
Voltage <sup>2</sup>	100.0000 mV	0.1 μV	90 Days (all ranges)	0.35 + 0.03	0.05 + 0.03	0.11 + 0.05	0.6 + 0.08	4.0 + 0.5
	1.000000 V	1.0 μV		1 Year (all ranges)	0.35 + 0.03	0.06 + 0.03	0.12 + 0.05	0.6 + 0.08
	10.00000 V	10 μV	(Temp. Coeff.)/°C <sup>3</sup>		0.035 + 0.003	0.005 + 0.003	0.006 + 0.005	0.01 + 0.006
	100.0000 V	100 μV	3 Hz-10 Hz	0.30 + 0.04	0.10 + 0.04	0.14 + 0.04		
750.000 V	1.0 mV		0.35 + 0.06	0.15 + 0.06	0.18 + 0.06			
			(Temp. Coeff.)/°C <sup>3</sup>	0.035 + 0.006	0.015 + 0.006	0.015 + 0.006		
Current <sup>2</sup>	1.000000 A	1.0 μA	90 Day/1 Yr.	0.30 + 0.04	0.10 + 0.04	0.14 + 0.04		
	3.000000 <sup>15</sup> A	10 μA		3 Hz-10 Hz	0.35 + 0.06	0.15 + 0.06	0.18 + 0.06	
				(Temp. Coeff.)/°C <sup>3</sup>	0.035 + 0.006	0.015 + 0.006	0.015 + 0.006	
Frequency <sup>4</sup> and Period	100 mV	0.333 ppm	90 Day/1 Yr.	Accuracy ±(ppm of reading + offset ppm) (3 Hz-500 kHz) (333 ms-2 μs)				
	to 750 V	3.33 ppm		80 ppm + 0.333 ppm (SLOW, 1s gate)				
		33.3 ppm		80 ppm + 3.33 ppm (MED, 100ms gate)				
				80 ppm + 33.3 ppm (FAST, 10ms gate)				

### Additional Uncertainty ±(% of reading)

Low Frequency Uncertainty	MED	FAST
20Hz - 30Hz	0.3	—
30Hz - 50Hz	0	—
50Hz - 100Hz	0	1.0
100Hz - 200Hz	0	0.18
200Hz - 300Hz	0	0.10
> 300Hz	0	0

CREST FACTOR <sup>5</sup> :	1-2	2-3	3-4	4-5
Additional Uncertainty:	0.05	0.15	0.30	0.40
Maximum Crest Factor:	5 at full-scale.			

## AC MEASUREMENT CHARACTERISTICS

### AC Volts

MEASUREMENT METHOD: AC-coupled, True RMS.

INPUT IMPEDANCE: 1MΩ ±2% // by <100pF.

INPUT PROTECTION: 1000Vp or 400VDC, 300Vrms with plug-in modules.

### AC Current

MEASUREMENT METHOD: AC-coupled, True RMS.

SHUNT RESISTANCE: 0.1Ω.

BURDEN VOLTAGE: 1A <0.5Vrms, 3A <1.5Vrms. Add 1.5Vrms when used with plug-in modules.

INPUT PROTECTION: 3A, 250V fuse.

### Frequency and Period

MEASUREMENT METHOD: Reciprocal Counting technique.

GATE TIME: SLOW 1s, MED 100ms, and FAST 10ms.

### AC General

AC CMRR<sup>6</sup>: 70dB.

VOLT HERTZ PRODUCT: ≤8 × 10<sup>7</sup>.

## AC MEASUREMENT SPEEDS<sup>7,13</sup>

Single Channel, 60Hz (50Hz) Operation

Function	Digits	Readings/s	Rate	Bandwidth
ACV, ACI	6.5	2s/Reading	SLOW	3 Hz-300 kHz
	6.5	4.8 (4)	MED	30 Hz-300 kHz
	6.5 <sup>9</sup>	40 (32)	FAST	300 Hz-300 kHz
Frequency, Period	6.5	1 (1)	SLOW	3 Hz-300 kHz
	5.5	9 (9)	MED	30 Hz-300 kHz
	4.5	35 (35)	FAST	300 Hz-300 kHz
	4.5 <sup>10</sup>	65 (65)	FAST	300 Hz-300 kHz

## Multiple Channel Into Memory<sup>10,11</sup>

7710 SCANNING ACV: 440/s.

7710 Scanning ACV with Auto Delay On: 2s/reading.

## AC SYSTEM SPEEDS<sup>7,9,11</sup>

RANGE CHANGES<sup>12</sup>: 4/s (3/s).

FUNCTION CHANGES<sup>12</sup>: 4/s (3/s).

AUTORANGE TIME: < 3s.

ASCII READINGS TO RS-232 (115.2k baud): 300/s.

MAX. INTERNAL TRIGGER RATE: 2800/s.

MAX. EXTERNAL TRIGGER RATE: 2000/s.

## AC Notes

- 20% overrange except on 750V and 3A.
- Specifications are for SLOW mode and sine wave inputs >5% of range. SLOW and MED are multi-sample A/D conversions. FAST is DETector: BANDwidth 300 with nPLC = 1.0.
- Applies to 0°-18°C and 28°-50°C.
- Specifications are for square wave inputs only. Input signal must be >10% of ACV range. If input is <20mV on the 100mV range then the frequency must be >10Hz.
- Applies to non-sine waves >5Hz and <500Hz. Crest factor greater than 4.3 is guaranteed by design only.
- For 1kΩ unbalance in LO lead.
- Speeds are for 60Hz (50Hz) operation using factory defaults operating conditions (\*RST). Autorange off, Display off, Limits off, Trigger delay=0.
- For ACV inputs at frequencies of 50 or 60Hz (±10%) add the following to “% of Range” uncertainty: 100mv 0.25%, 1V 0.05%, 10V 0.13%, 100V 0.03%, 750V 0.01%.
- Auto Zero off.
- Sample count = 1000 (into memory buffer).
- DETector: BANDwidth 300 with nPLC = 0.006.
- Maximum useful limit with trigger delay = 175ms.
- Includes measurement and data transfer out Ethernet (Reading Element only). (100bTx Ethernet, 3 meter RJ-45 crossover cable, PIII-800, Windows version 98 SE, VB version 6.0, direct WinSocket interface).
- Typical uncertainties. Typical represents two sigma or 95% of manufactured units measure < 0.35% of reading and three sigma or 99.7% < 1.06% of reading.
- For signal levels >2.2A, add additional 0.4% to “of reading” uncertainty.

# 2701 Ethernet Multimeter/Data Acquisition System

## GENERAL SPECIFICATIONS

**EXPANSION SLOTS:** 2.

**POWER SUPPLY:** 100V / 120V / 220V / 240V.

**LINE FREQUENCY:** 50Hz to 60Hz and 400Hz, automatically sensed at power-up.

**POWER CONSUMPTION:** 80VA.

**OPERATING ENVIRONMENT:** Specified for 0°C to 50°C. Specified to 80% RH at 35°C. Altitude up to 2000 meters.

**STORAGE ENVIRONMENT:** -40°C to 70°C.

**BATTERY:** Lithium Ion battery-backed memory, 30 days of buffer storage @ 23°C and >4 hours charge time. Battery lifetime: 3 years @ 23°C, 1.5 years @ 50°C.

**WARRANTY:** 3 years, excludes battery.

**EMC:** Conforms to European Union Directive 89/336/EEC EN61326-1.

**SAFETY:** Conforms to European Union Directive 73/23/EEC EN61010-1, CAT I.

**VIBRATION:** MIL-PRF-28800F Class 3, Random.

**WARM-UP:** 2 hours to rated accuracy.

### DIMENSIONS:

**Rack Mounting:** 89mm high × 213mm wide × 370mm deep (3.5 in. × 8.375 in. × 14.563 in.).

**Bench Configuration (with handle and feet):** 104mm high × 238mm wide × 370mm deep (4.125 in. × 9.375 in. × 14.563 in.).

**SHIPPING WEIGHT:** 4.75kg (10 lbs).

**DIGITAL I/O:** 2 inputs, 1 for triggering and 1 for hardware interlock. 5 outputs, 4 for Reading Limits and 1 for Master Limit. Outputs are TTL compatible or can sink 250mA, diode clamped to 40V.

### TRIGGERING AND MEMORY:

**Window Filter Sensitivity:** 0.01%, 0.1%, 1%, 10%, or Full-scale of range (none).

**Reading Hold Sensitivity:** 0.01%, 0.1%, 1%, or 10% of reading.

**Trigger Delay:** 0 to 99 hrs (1ms step size).

**External Trigger Delay:** <1ms.

**Memory Size:** 450,000 readings.

**MATH FUNCTIONS:** Rel, Min/Max/Average/Std Dev/Peak-to-Peak (of stored reading), Limit Test, %, 1/x, and mX + b with user defined units displayed.

### REMOTE INTERFACE:

Ethernet: RJ-45 connector, TCP/IP (Auto sensed 10bT or 100bTx) and RS-232C.

SCPI (Standard Commands for Programmable Instruments)

**ACCESSORIES SUPPLIED:** Model 1751 Safety Test Leads, Product Information CD-ROM, Model 2701 Networking Manual, Model 2701 Getting Started Foldout, 3m crossover Ethernet cable. Software CD-ROM with IVI/VISA drivers for VB, VC/C++, LabVIEW, TestPoint, and LabWindows/CVI, and free runtime startup software.

### ACCESSORIES AVAILABLE:

77XX Modules

Extended Warranty

ExcellINX-1A (Excel add-in datalogger software)

TestPoint™ Software Development Package

**IP CONFIGURATION:** Static or DHCP

**PASSWORD PROTECTION:** 11 characters

**SOFTWARE:** Windows 98, NT, 2000, ME and XP compatible, Internet Explorer 5.0 or higher required. Web pages served by 2701.

---

# Table of Contents

<b>1</b>	<b>Introduction</b>	
	General information .....	1-2
	Software .....	1-3
	Contact information .....	1-3
	Features of the Ethernet interface .....	1-3
	Supported environments .....	1-5
<b>2</b>	<b>Network Connection</b>	
	Overview .....	2-2
	Component specifications .....	2-2
	Direct connection .....	2-3
	Procedure .....	2-3
	Hub connection .....	2-4
	Procedure .....	2-5
	Dual interface card connection .....	2-6
	Procedure .....	2-6
	Corporate network connection .....	2-8
<b>3</b>	<b>Configuring TCP/IP addresses</b>	
	Communication protocol .....	3-2
	IS/IT department .....	3-2
	Direct connection (isolated network) .....	3-4
	Address restrictions .....	3-4
	Selecting an address .....	3-5
	Changing Model 2701 TCP/IP addresses .....	3-7
	Front panel .....	3-7
	Check or set TCP/IP address over Ethernet .....	3-8
	Configuring a Network Interface Card (NIC) .....	3-10
	Configuration in Windows 98/ME .....	3-11
	Configuration in Windows NT4 .....	3-12
	Configuration in Windows 2000 .....	3-13
	Configuration in Windows XP .....	3-14
	Troubleshooting .....	3-15

---

  
**4****Software and Drivers**

Keithley Integra Series Software Architecture .....	4-2
Built-in web diagnostic tool (free) .....	4-3
Provided software .....	4-4
TestPoint runtime start-up software package .....	4-4
KE2700 VISA Based IVI Instrument Driver .....	4-6
Additional software applications .....	4-8
ExceLINX-1A .....	4-8
TestPoint Application Development Package .....	4-9
Provided software and driver installation .....	4-10
Installation and configuration .....	4-10

**A****Cable diagrams**

Ethernet cables .....	A-2
Straight through cables .....	A-2
Cross over cables .....	A-3

**B****Glossary**

---

# List of Illustrations

<b>1</b>	<b>Introduction</b>	
Figure 1-1	Model 2701 rear panel .....	1-4
<b>2</b>	<b>Network Connection</b>	
Figure 2-1	PC to Single Model 2701 .....	2-3
Figure 2-2	Hub to Model 2701 .....	2-4
Figure 2-3	Dual NIC to Model 2701 .....	2-7
Figure 2-4	Corporate network connections .....	2-8
<b>3</b>	<b>Configuring TCP/IP addresses</b>	
Figure 3-1	IP address byte location sample .....	3-6
Figure 3-2	Internal web page .....	3-9
Figure 3-3	Command window w/ipconfig .....	3-10
Figure 3-4	Windows 98/ME Ethernet card settings .....	3-11
Figure 3-5	Windows NT4 Ethernet card settings .....	3-12
Figure 3-6	Windows 2000 Ethernet card settings .....	3-13
Figure 3-7	Windows XP network configuration window .....	3-14
<b>4</b>	<b>Software and Drivers</b>	
Figure 4-1	Software overview .....	4-2
Figure 4-2	TestPoint runtime start-up software .....	4-4
Figure 4-3	ExceLINUX-1A .....	4-8
Figure 4-4	Keithley configuration wizard window .....	4-11
Figure 4-5	Select operation window .....	4-12
Figure 4-6	Select communication bus type window .....	4-12
Figure 4-7	Select IP address window .....	4-13
Figure 4-8	Select instrument driver window .....	4-13
Figure 4-9	Assign instrument name window .....	4-14
Figure 4-10	Summary window .....	4-14
Figure 4-11	Advanced configuration window—select instrument .....	4-16
Figure 4-12	Attribute setting .....	4-17
Figure 4-13	Advanced configuration window—view changed attribute .	4-17
<b>A</b>	<b>Cable diagrams</b>	
Figure A-1	Straight through cables .....	A-2
Figure A-2	Cross over cables .....	A-3

---

**1**

# Introduction

---

## General information

Keithley's Model 2701 is the industry's first multipoint measurement and control system that fully integrates instrument quality resolution and sensitivity with Ethernet long distance networking capability. This allows for sensitive measurements in a distributed data acquisition environment using long distance industry standard communications.

Using the Model 2701 can reduce networking costs by requiring only one computer, as compared to traditional systems where separate computer/controllers may be needed with each instrument or DAQ system. In addition, using Ethernet to control the Model 2701 provides reliable measurements without the configuration and installation challenges of traditional GPIB alternatives. With a Model 2701, there is no need to open a PC or install separate communication interfaces such as GPIB boards. Just connect the Model 2701 directly to the PC's Ethernet port via a cross over RJ-45 cable, which is included with the Model 2701.

The Model 2701 can be controlled and provide readings over an Ethernet connection using TCP/IP protocol. The Model 2701 contains an integral web server which provides diagnostic control of the Model 2701 through ActiveX controls. The web pages accessed via the built-in web server allow the user to view diagnostic information, view and edit the Instrument's networking configuration, take and display simple readings, and send the instrument SCPI commands and display the results. The 2701's IP address, as well as Subnet mask, Gateway, DHCP, among other items, can be set from the instruments front panel or over the Ethernet connection (see [Section 3](#)). To access this page, type the 2701's IP address into IE's address field (just like any other web address, but without the www, for an example, see [Figure 3-2](#)).

Full access to the instrument can be obtained via a TCP/IP socket connection. Using this socket connection, the 2701 may be fully configured and controlled, as well as all measurement data read. A custom software program that uses a socket connection can be written to access the instrument. The ActiveX controls on the web page establish a socket connection to the instrument and use it to obtain the diagnostic information, send commands, and retrieve responses. The Instrument Driver Software also uses this socket connection.

Call Keithley or visit [www.keithley.com](http://www.keithley.com) to order a free Model 2701 application note that discusses programming multiple 2701s using the IVI/VISA driver, as well as the direct Windows socket interface. The requirement for network topology is a functioning Ethernet. This can be a direct connection between a PC and a single 2701 through a cross over cable or over a corporate LAN. This manual provides user information for isolated network connections. For corporate LAN installations, contact your IS/IT department before making any connections to your building's network.



## Software

The following is a summary of available Model 2701 software (refer to [Section 4](#) for detailed information):

**Built-in web diagnostic tool (free)** — Using Microsoft® Internet Explorer® on a PC provides Model 2701 control.

**TestPoint runtime (free)** — Provides basic data logging capabilities. This can be modified with the TestPoint application development package.

**TestPoint application development package (purchase separately)** — This powerful and economical programming environment uses object-oriented technology through a drag-and-drop interface to build a basic system quickly and without in-depth programming. Optional toolkits (database and statistical process control) are available to expand ExceLINUX-1A capability.

**ExceLINUX-1A (purchase separately)** — This is an economical, easy-to-use, add-in utility for Microsoft Excel® and Keithley Integra Series Multimeter/Switch systems. No programming is required—configure your measurements quickly using pop-up menus and eliminate time-consuming and error prone programming. Acquire data into a spreadsheet on the fly during a scan or transfer data into a spreadsheet after a scan is completed. A few mouse clicks are all it takes to configure channels, set parameters, triggers, and scan lists. There is no need to launch a separate data logging or data-crunching application; live data streams automatically into an Excel workbook, ready for analysis or charting using all of Excel's powerful built-in tools.

**IVI (VISA-Based) instrument driver (free)** — Provided for programmers, designed for use with application development environments.

## Contact information

Worldwide phone numbers are listed at the front of this manual. If you have any questions, please contact your local Keithley representative or call a Keithley Application Engineer at 1-800-348-3735 (U.S. and Canada only).

## Features of the Ethernet interface

This section describes the Model 2701 Ethernet interface control. The Model 2701's adapter supports 10BaseT and 100BaseTX Fast Ethernet. Through design, the Model 2701 integrates easily with fast Ethernet hubs and switches.

***NOTE** To operate at 10 Mbts/sec, a category 3 (or higher) UTP cable is required. To operate at 100 Mbts/sec, a category 5 UTP cable is required.*

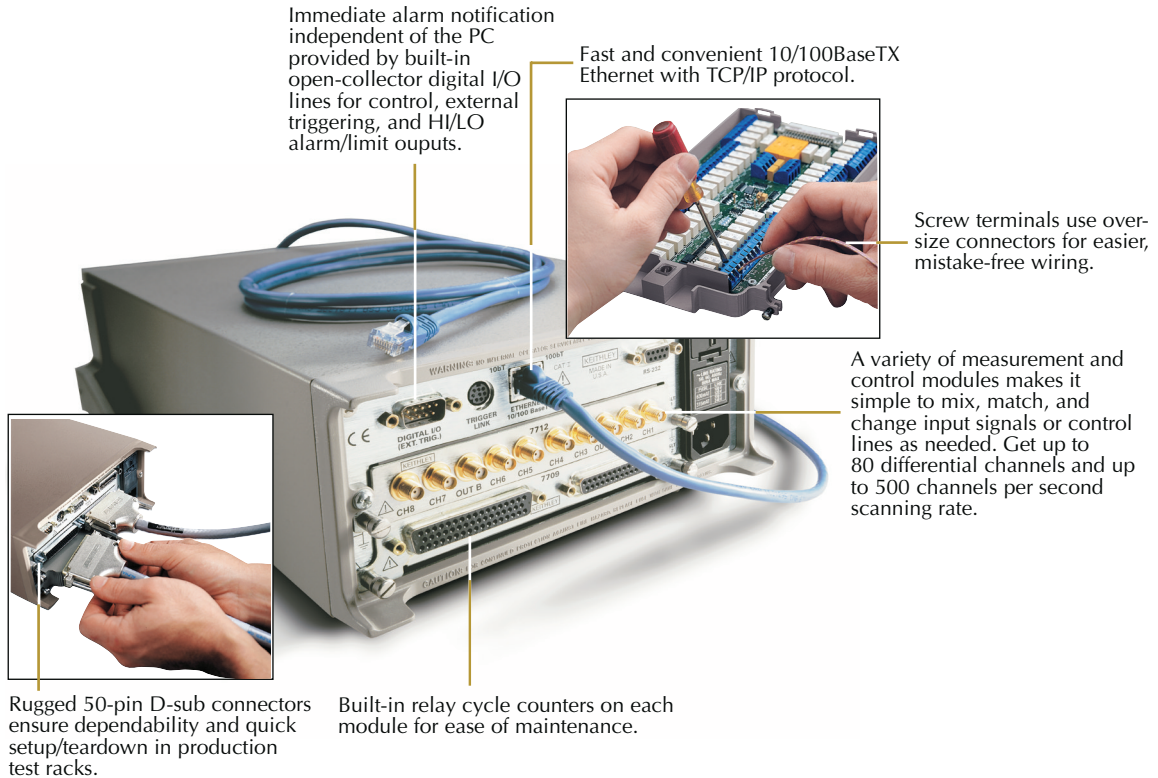
### Autosensing

The Model 2701 autosenses the Ethernet connection speed (either 10BaseT or 100BaseTX). This allows the Model 2701 to auto-switch to the proper speed providing compatibility with both network speeds.

## Connector location

Figure 1-1 contains the location of the Model 2701 network port (RJ-45 connector). This connector is used to provide either 10BaseT or 100BaseTX connections to an Ethernet.

Figure 1-1  
Model 2701 rear panel



## Status LEDs

Two status LEDs are located at the top of the RJ-45 connector (Figure 1-1). Refer to Table 1-1 for a description of LED status descriptions.

Table 1-1

### LED status descriptions

LED	Status	Description
10bT	On	Network connected (10 Mbit/sec connection)
10bT	Blinking	Traffic is traversing the port (10 Mbit/sec connection)
10bT	Off	10 Mbit/sec Network is NOT connected
100bT	On	Network connected (100 Mbit/sec connection)
100bT	Blinking	Traffic is traversing the port (100 Mbit/sec connection)
100bT	Off	100 Mbit/sec Network is NOT connected

## Supported environments

The Model 2701's software is designed for use with the following Windows™ operating systems:

- Win 98
- Win ME
- Win NT4.0+ (including Win 2000)
- Win XP Professional

Also, Microsoft Internet Explorer Version 5.0 (and greater) is required for network control.

**NOTE** Netscape Navigator is not supported. Also, use of a Macintosh computer is not supported. The PC must be at least a Windows 98 compatible machine.

**NOTE** If using Internet Explorer 5.5, make sure to have previously installed Service Pack 1 (SP1).



**2**

# Network Connection

---

## Overview

Keithley's Model 2701 is a multipoint measurement and control system that fully integrates instrument quality resolution and sensitivity in an Ethernet-based data acquisition (DAQ) system. The Model 2701 is designed for a 10/100BaseTX network using standard RJ-45 connectors. This is an eight wire connector, but only two sets of wire pairs are used: one pair to transmit and one pair to receive data. A 10BaseT network can accommodate transmission speeds up to 10Mbit per second where a 100BaseTX network operates at speeds of up to 100Mbit per second. Both types of networks usually require Ethernet hubs to make connections. The exception is a one to one connection using a cross over cable, which may be a 10BaseT or 100BaseTX dependent on the PC's Ethernet interface card and which category of cable is used.

Information on four connection schemes is detailed in this section:

- Direct connection—PC to Model 2701 through a cross over cable (provided).
- Hub connection—PC to one or more Model 2701s.
- Dual interface card connection—PC with two interface cards. (One for the Model 2701 network and one for the corporate network—each network isolated.)
- Corporate network connection—requires IS/IT or Network Administrator.

## Component specifications

Table 2-1 contains a listing of the different components that may be required for the different Model 2701 connection schemes (not all items are required for all connections).

Table 2-1

### Component specifications

Component	Specifications (required by Model 2701)	Other specifications	Typical use
Network Interface Card	Speed: 10 Mbit/sec or 100 Mbit/sec, Connector: RJ-45	As required by PC	All schemes
Cross Over Cable (provided)	CAT 5, Connector: RJ-45	None	PC to Single Model 2701.
Straight-thru Cable	CAT 5, Connector: RJ-45	None	PC to Model 2701 through hub or network drop.
Network Hub	10/100BaseTX, RJ-45 Jacks	None	PC to Model 2701 through hub.

## Direct connection

This section contains information on connecting the Model 2701 directly to the Ethernet port on a PC (see [Figure 2-1](#)) using an Ethernet cross over cable. This setup provides a one-to-one connection between the PC and the Model 2701. When using this connection scheme, the TCP/IP settings for the PC's Ethernet card and the Model 2701 will need to be set manually (see [Section 3](#)).

**NOTE** A different IP addresses is required for the Model 2701 and the network interface card.

Figure 2-1  
**PC to Single Model 2701**

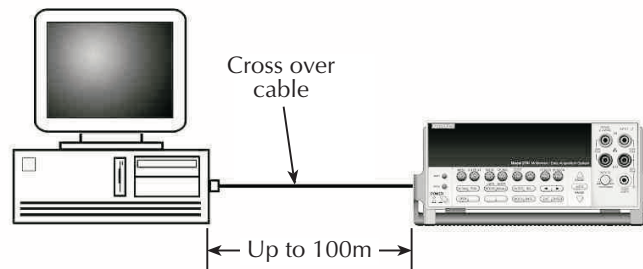


Table 2-2  
**Additional component requirements for direct connection**

Quantity	Component	Note
1	Network Interface Card	Properly installed in PC.
1	CAT 5 Cross over cable	3 meter cross over cable included.

## Procedure

**NOTE** A direct connection requires use of a cross over cable (not the straight-thru cable that connects a PC's Ethernet card to a network hub).

1. Connect one end CAT 5 cross over cable to Network Interface Card in PC.
2. Connect other end of CAT 5 cross over cable to Network Interface port on the Model 2701.
3. Configure Ethernet setup (see [Section 3](#)).

## Hub connection

This section contains information on connecting the PC to one or more Model 2701s through an Ethernet hub (Figure 2-2) or switch that is not part of a larger local area network using Ethernet straight through cables. When using this connection scheme, the TCP/IP settings for the PCs Ethernet card and the Model 2701 will need to be set manually (see Section 3).

**NOTE** Different available IP addresses are required for each Model 2701 and the network interface card connected to the Model 2701 network.

Figure 2-2  
**Hub to Model 2701**

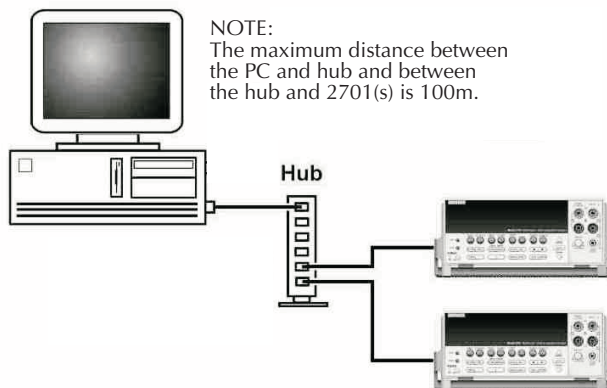


Table 2-3  
**Additional component requirements for hub connection**

Quantity	Component	Note
1	Network Interface Card	Properly installed in PC.
2	CAT 5 straight-thru cable	Add one additional cable for each additional Model 2701 connected through the hub.
1	Network Hub	10/100BaseTX



## Procedure

**NOTE** *Use this procedure to connect the Model 2701 to an isolated Ethernet. If desired, another connection from this hub to the corporate network (or network drop) can be made with IS/IT department support and an additional CAT 5 cable. Always contact your IS/IT department before connecting to the corporate network (or network drop).*

1. Connect one end of a CAT 5 Cable to network interface card installed in PC (refer to the cards instructions for procedure).
2. Connect other end of the CAT 5 Cable to an available RJ-45 connector in hub. (Do not connect to uplink connector, the uplink connector is used when connecting hubs together.)
3. Connect one end of a CAT 5 Cable to ETHERNET port on the Model 2701 rear panel.
4. Connect other end of the CAT 5 Cable to an available RJ-45 connector in hub. (Do not connect to uplink connector, the uplink connector is used when connecting hubs together.)
5. Connect additional Model 2701(s) as desired in the same manner.
6. Configure Ethernet setup (see [Section 3](#)).

## Dual interface card connection

**NOTE** *This scheme requires a second network interface card installed in the PC. The first interface card (connected to other network resources) will remain connected. (Email and other network resources available before connection to the Model 2701 will still be available using this scheme.)*

**NOTE** *Different available IP addresses are required for each Model 2701 and each network interface card connected to the Model 2701 network.*

This section contains information on connecting the PC to the Model 2701 while still maintaining connection to a corporate network. Use this type of scheme when it is desirable to have the same PC used for connection to the Model 2701 while retaining the capabilities of connection with the corporate network (such as for email or intranet applications). This scheme maximizes the performance of the network connections to the instruments by isolating corporate network traffic from the 2701 and the PC (i.e., when the instruments are connected to a corporate LAN, the network traffic on the LAN can slow down communications with the 2701).

When using this connection scheme, the TCP/IP settings for the PC's Ethernet card and the Model 2701 will need to be set manually (see [Section 3](#)).

### Procedure

This connection can be made directly to the Model 2701 or to a hub (see [Figure 2-3](#)). [Table 2-4](#) contains parts required for a connection through a hub and [Table 2-5](#) contains parts required for a direct connection. Complete connections for the desired scheme. Refer to “[Direct connection](#)” on [page 2-3](#) or “[Hub connection](#)” on [page 2-4](#) for details. The TCP/IP settings for the Ethernet port the on the PC and the Model 2701s will need to be set manually (refer to [Section 3](#)). Make sure to use settings that do not interfere with the existing network (consult IT/IS department if unsure).

Figure 2-3  
Dual NIC to Model 2701

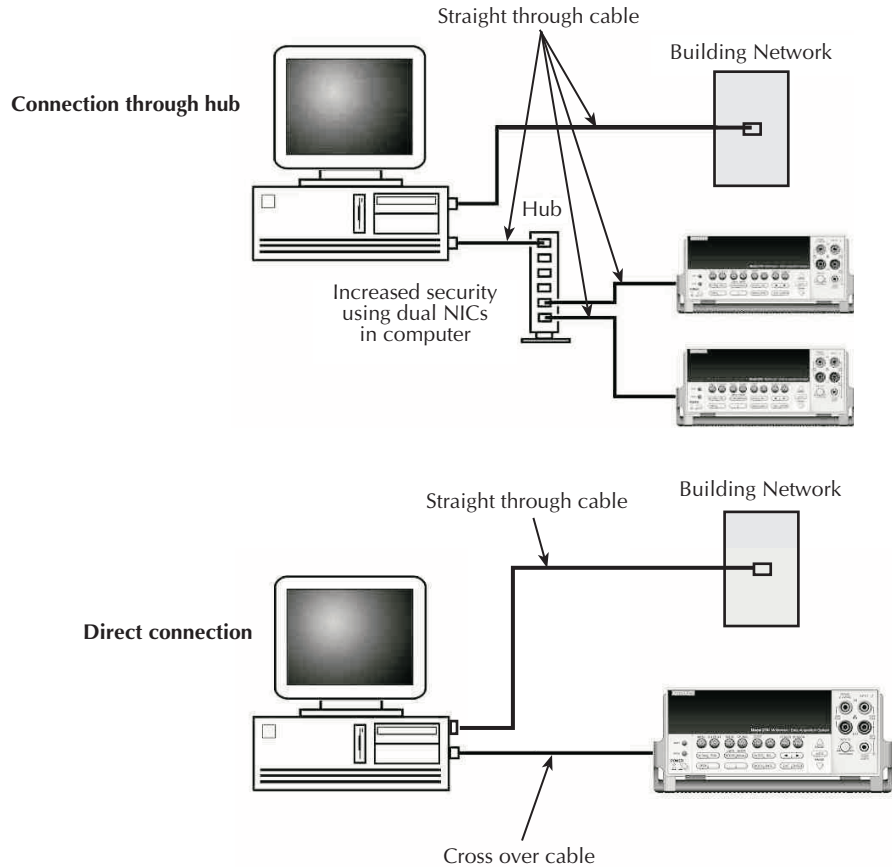


Table 2-4  
Additional component requirements—dual NIC connection through hub

Quantity	Component	Note
2	Network Interface Card	Properly installed in PC.
Existing	Existing network cabling	Maintains current network functions.
2	CAT 5 straight-thru cable	Add one additional cable for each additional Model 2701 connected through the hub.
1	Network Hub	10/100BaseTX

Table 2-5

**Additional component requirements—dual NIC direct connection**

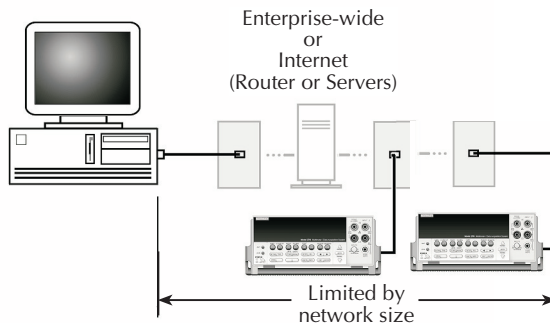
Quantity	Component	Note
2	Network Interface Card	Properly installed in PC.
Existing	Existing network cabling	Maintains current network functions.
1	CAT 5 cross over cable	

## Corporate network connection

**NOTE** Although this is the most commonly used Ethernet connection scheme to implement it requires IT/IS support.

This section contains information on connecting the Model 2701 to one or more devices using an Ethernet hub or switch (Figure 2-4) that is part of larger local area network (LAN). The LAN administrator must be consulted for the correct settings. Connections require Ethernet straight-thru cables.

Figure 2-4

**Corporate network connections**

**CAUTION** When connecting the Model 2701 (or any other host) to a corporate network, the sites network administrator **MUST** provide all of the network settings for the Model 2701 including IP address, subnet, and gateway. Failure to use settings provided by the sites Network Administrator could result in failures at other locations on the corporate network. Failure to work through the Network Administrator could also be considered a breach of company policy. Always consult with the Network Administrator before attempting to connect instrumentation to the network.

**NOTE** Network administrators refer to the IS/IT department section of Communication protocol for specific information about the capabilities of the Model 2701.

# Configuring TCP/IP addresses

---

## Communication protocol

The TCP/IP Protocol is the protocol the Model 2701 uses to communicate over the Ethernet connection to the PC. The Model 2701 TCP/IP settings may be configured either manually (on the device) or through the use of a DHCP (Dynamic Host Configuration Protocol) server when connected to a local area network (LAN). The IP settings consist of an IP address, Subnet mask, and gateway address.

A Network Administrator is required to provide the IP settings (addresses) if the connection is made to a LAN. If the network will be isolated from the LAN, the connection can be made without a Network Administrator—refer to “[Direct connection \(isolated network\)](#)” on page 3-4 for information on manual configuration of IP addresses.

**CAUTION** When connecting the Model 2701 (or any other host) to a corporate network, the network administrator **MUST** provide all of the network settings for the Model 2701 (IP address, subnet, and gateway). Failure to use settings provided by the Network Administrator could result in failures at other locations on the corporate network. Failure to work through the Network Administrator could also be considered a breach of company policy. Always consult the Network Administrator before attempting to connect instrumentation to the network.

## IS/IT department

The Model 2701 supports DHCP. (If a DHCP server is present on the network, it will automatically provide the correct settings to the Model 2701 if the 2701 is powered up while connected to the network.) When adding the device to a network, if a DHCP server is available, the DHCP server will download the IP address, Subnet mask, and gateway address to the Model 2701 upon powering it up on the network. Contact the IS/IT department for access to the DHCP server. The network parameters acquired from the DHCP can be viewed from the Model 2701 front panel menu or queried over the bus. If no DHCP server is available, the Network (LAN) administrator must assign these values to ensure proper operation of the device and to avoid conflicts with other devices on the network.

**NOTE** *The Model 2701 supports DHCP. This 2701 setting can be changed over the Ethernet connection using the built-in web page or from the front panel (refer to “[Changing Model 2701 TCP/IP addresses](#)” on page 3-7).*

Usually the instruments are kept inside the corporate firewall, but the Network Administrator could assign resources that allow them to be outside the firewall. Placing the resources outside the firewall would allow a Model 2701 connection to the internet using appropriate security methods. This would allow data collection and distribution control from virtually any location in the world.

Use [Table 3-1](#) as a quick reference guide for the IS/IT department. Please refer to the appropriate sections of the this manual as well as the Model 2701 User's Manual for detailed explanations of the information below.

*Table 3-1*  
**IT/IS department quick reference guide**

Network resource	Action	Description
MAC address	View	Different methods can be used to perform the action listed for each network resource (e.g., use the internal web page or the front panel). SCPI commands can also be used to perform the action on each resource (refer to the Model 2701 User's Manual for further information on SCPI programming).
IP address	View/Set	
Subset Mask	View/Set	
Default Gateway	View/Set	
DHCP	On/Off	
DNS	N.A.	
Number of 2701connections	1	The 2701 will only support a single connection to the instrument at a time.

To set the Model 2701 to use DHCP from the front panel:

Press SHIFT->ETHERNET->VIEW

Dashes will be displayed for Address, Subnet, and Gateway until the unit gets them from the DHCP server.

To set the Model 2701 to use DHCP over the Ethernet, use the internal web page (refer to [“Check or set TCP/IP address over Ethernet”](#) on page 3-8).

## Direct connection (isolated network)

When connecting the device directly to the Ethernet port of a PC or to a hub that is not part of a larger network, the IP address and Subnet mask must be configured manually (the gateway address is not relevant in this case).

The IP address is a 32-bit identifier consisting of four one byte (8-bits) sections, commonly notated in dotted decimal format (i.e. 145.90.120.240). The Subnet mask is a second 32-bit identifier that designates what portion of the IP address identifies the subnet and what portion identifies the device (i.e. 255.255.255.0). In this example, 145.90.120 is the network address and 240 is the device address. Gateway addresses are typically the device address 1 (e.g., 145.90.120.1).

Networks are commonly grouped into three classes based on the first byte of the address:

Table 3-2

### Network classes

Class	First Byte	Typical Subnet Mask	IP Address Example
A	1 to 127	255.0.0.0	100.1.1.1
B	128 to 191	255.255.0.0	128.1.1.1
C	191 to 223	255.255.255.0	191.1.1.1

## Address restrictions

**NOTE** *Different available IP addresses are required for each node (this includes each 2701 and each network interface card connected to the instruments network).*

The following IP addresses are reserved—do not assign them to any device (either interface card or Model 2701):

Do not assign...

- any address beginning (first byte) with 0 or 127 (reserved for loopback test),
- any address beginning (first byte) with 224 through 255,
- any address ending (last byte) with 0 or 255.

Other than the restricted addresses, any dis-similar address may be assigned to the PC's Ethernet interface card and to each Model 2701. Keep in mind that when creating and assigning an address, the one assigned to the Model 2701 has to be of the same class as the network. For example, if you want the Model 2701's IP address to be 192.168.0.2 (the default), the Subnet mask should be 255.255.255.0. Also, to communicate with the Model 2701, the PC's Ethernet Interface card must be set to the same class (same Subnet mask and Network ID).

**NOTE** *Without the correct Subnet mask or Network ID, the direct network will not function.*



## Selecting an address

1. Pick a network class. Although most isolated networks are class C type, any class can be selected (see [Table 3-2](#)). Use [Table 3-3](#) as a guide to make sure all the required information is available. To make sure a corporate network stays isolated (especially in a dual NIC configuration), it is recommended to use a class C type network.

Table 3-3  
**IP address example**

Class	Node	IP address		Subnet mask
		Network ID	Node	
__C__	Computer	192 . 168 . 0 .	__1__	255 . 255 . 255 . 0
	2701	.	__2__	
	2701	.	__3__	
	2701	.	__4__	
	2701	.	__5__	
	2701	.	__6__	
	2701	.	__7__	

2. With the network class selected, select the First Byte for the class from [Table 3-2](#).

**NOTE** Make sure to not use any restricted numbers as the First Byte number. See “Address restrictions” on page 3-4.

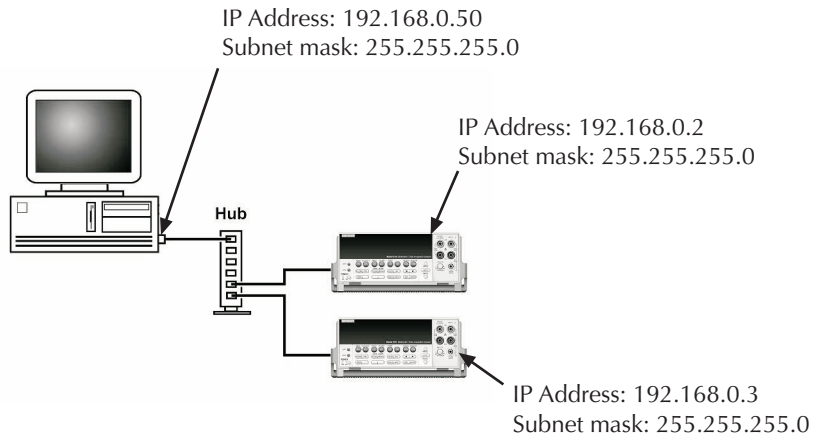
**NOTE** The first byte is the left most byte of the Network ID.

3. With First Byte selected, select the second through third bytes of the address. (The first through third bytes of the IP Address make up the Network ID. This as well as the Subnet mask must match for each node.)

4. Select the fourth byte (Node identifier). Use an easily recognizable pattern if assigning numbers to many nodes (see [Figure 3-1](#)).
5. Select the Subnet mask for the network class (see [Table 3-2](#)).
6. Set the Model 2701 address(es) as required. (See “[Changing Model 2701 TCP/IP addresses](#)” on page 3-7).

**NOTE** Since the network scheme in [Figure 3-1](#) does not connect to a corporate LAN, the gateway address selected does not matter (it can be set to 0.0.0.0).

**Figure 3-1**  
**IP address byte location sample**



<p>Network ID</p> <p>Node designation</p> <p>IP Address: 192.168.0.2</p> <p>Subnet mask: 255.255.255.0</p>	<p>IP Address: Made up of two parts:</p> <ul style="list-style-type: none"> <li>• Network ID: Must be the same for all nodes on the network that are communicating with each other.</li> <li>• Node designation: Must be different from each node on the network but within the parameters of the networks class and subnet mask.</li> </ul> <p>Subnet mask: Must be the same for all nodes on the network that are communicating.</p>
--	--

# Changing Model 2701 TCP/IP addresses

The Model 2701 leaves the factory with the default settings in [Table 3-4](#).

Table 3-4  
**Model 2701 default TCP/IP addresses**

Field	Default value
IP ADDRESS	192.168.000.002
GATEWAY	192.168.000.001
SUBNET	255.255.255.000
DHCP	OFF

If the instrument is not recognized by the network, check the TCP/IP settings and make any changes required. Each Model 2701 ships with a unique MAC address—see the Glossary for a detailed definition.

## Front panel

### Check the TCP/IP address

1. Press Shift.
2. Press Ethernet (VIEW is displayed).
3. Press Enter to select VIEW.
4. Use the ▲ and ▼ range keys to scroll between:
  - ADDRESS
  - SUBNET
  - GATEWAY
  - MAC (read-only, cannot change)
5. Press enter to view the desired setting.

### Set the IP address

1. Press Shift.
2. Press Ethernet (VIEW is displayed).
3. Use the ▲ and ▼ range keys to scroll the display to SET.
4. Press Enter to select SET.
5. Modify the settings:
  - Use the ▲ and ▼ range keys to change values. Move the cursor with the ▲ and ▼ arrow keys.
  - Press enter to set the desired field and open the next setting.

## Check or set TCP/IP address over Ethernet

**NOTE** *This procedure requires that the Model 2701 is properly connected and configured with the PC over and Ethernet connection. Make sure you can check the TCP/IP address over the Ethernet before installing 2701 drivers or software.*

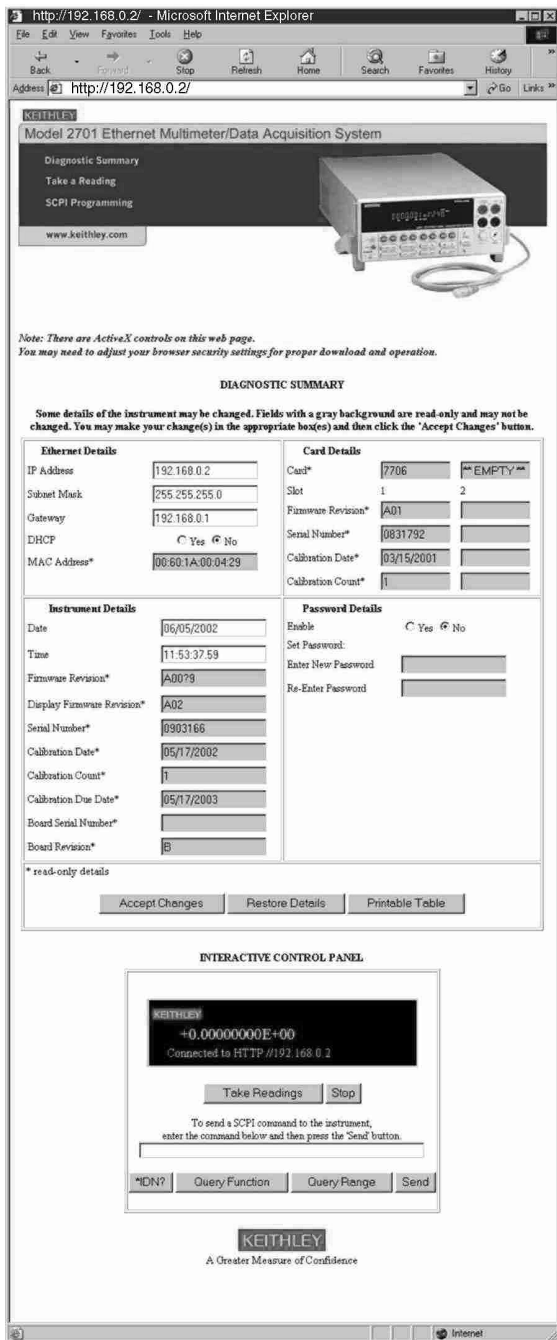
1. Open the internal web page using IE 5.0 or greater (see [Figure 3-2](#)). Use the IP address of 2701 as the web page address.

**NOTE** *Netscape Navigator is not supported. Also, use of a Macintosh computer is not supported. The PC must be at least a Windows 98 compatible machine.*

2. View settings or modify as desired. Make sure to accept the changes to apply them to the unit.
3. Open the new address using Internet Explorer.

**NOTE** *If you change the Subnet mask or Network ID over the Ethernet, the connection to the PC will be lost. The PC's configuration needs to be changed to match the new configuration of the Model 2701.*

Figure 3-2  
Internal web page



## Configuring a Network Interface Card (NIC)

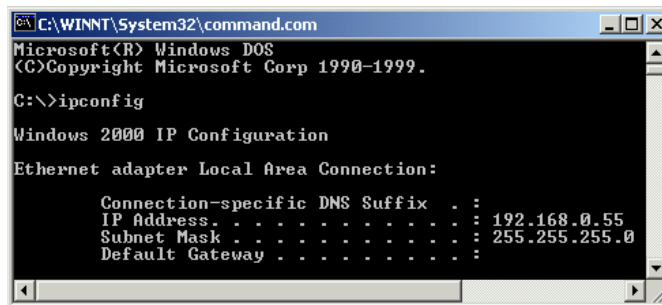
**NOTE** Refer to the network card's documentation for specific installation and configuration information. The following information is provided as an overview.

Check the IP address to verify that the correct class of network is set. To check, open a command window and use `ipconfig`:

1. Click **Start>>Run**.
2. At the prompt, type **command**.
3. Click **OK**. A command window will open.
4. At the prompt, type `ipconfig` and press enter. An output similar to [Figure 3-3](#) will be displayed. Check the Network ID and Subnet Mask. These are required to be of the same class as the Model 2701s.

**NOTE** The first through third bytes (starting at the left) of the IP Address make up the Network ID. For example, in [Figure 3-3](#), the Network ID is 192.168.0.

Figure 3-3  
**Command window w/ipconfig**



```
C:\WINNT\System32\command.com
Microsoft(R) Windows DOS
(C)Copyright Microsoft Corp 1990-1999.

C:\>ipconfig

Windows 2000 IP Configuration

Ethernet adapter Local Area Connection:

    Connection-specific DNS Suffix . . . : 
    IP Address . . . . . : 192.168.0.55
    Subnet Mask . . . . . : 255.255.255.0
    Default Gateway . . . . . :
```

To configure a network interface card, the TCP/IP protocol must also be installed and configured. In each version of the Windows operating systems, this is done differently.

After determining the network cards (installed in the PC) address and subnet, change the Model 2701's IP address and subnet information to be compatible with the PC's Ethernet card's information. See "[Changing Model 2701 TCP/IP addresses](#)" on page 3-7.

The following paragraphs provide additional specific operating information to be used when setting up an isolated network requiring the PC's Ethernet interface card, IP address, and subnet information to be modified.

**CAUTION** If your network interface card is configured for connection to a corporate LAN, do not modify the cards settings. Changing the settings may cause the PC to stop functioning on the corporate network.

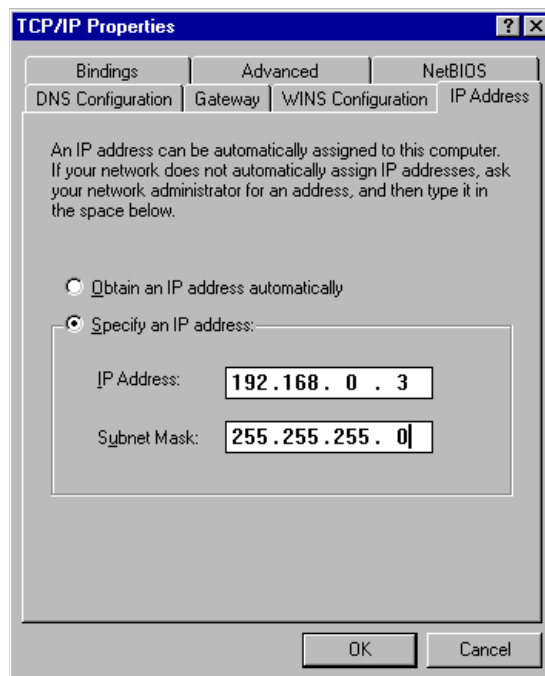
## Configuration in Windows 98/ME

Refer to [Figure 3-4](#).

1. Click on the Windows Start button.
2. Select Settings, then Control Panel.
3. Open the folder named Network.
4. Look for a TCP/IP entry. If you are configuring a computer with two network cards, there should be two entries, one for each card. You will be able to tell the difference by the listing; after the TCP/IP notation, there will be a reference to the NIC card(s). If there is no TCP/IP protocol listed, you must add one. This is done by clicking the Add button. Then click on Protocol, select Microsoft, and click TCP/IP.
5. After selecting the TCP/IP protocol, click the Properties button. On the IP Address tab, select the method of obtaining your IP address. For an isolated network, click on "Specify An IP Address".
6. Complete the IP Address and Subnet Mask according to your network configuration.
7. The Default Gateway and the DNS settings could be needed when connecting to a corporate network. For an isolated network, these settings are not used.
8. Follow the instructions on the screen and reboot as necessary.

Figure 3-4

### Windows 98/ME Ethernet card settings



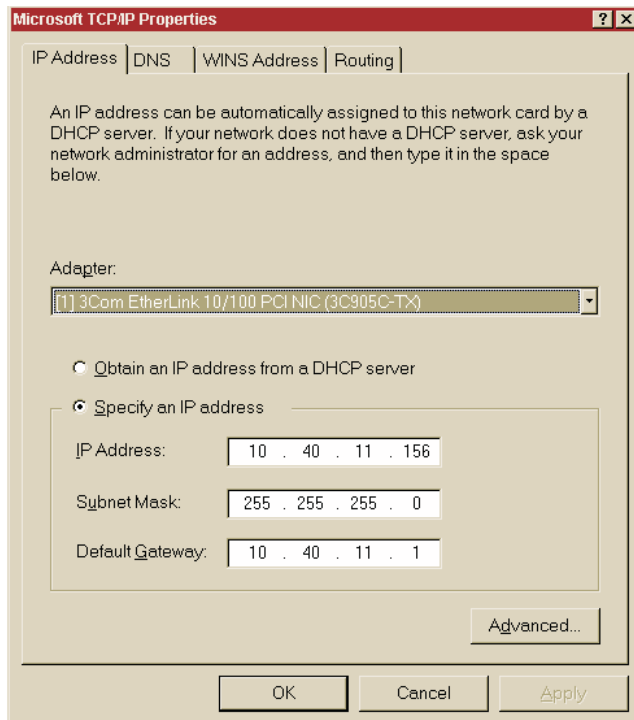
## Configuration in Windows NT4

Refer to [Figure 3-5](#).

1. Click on the Windows Start button.
2. Select Settings, then Control Panel.
3. Open the folder named Network.
4. Select the Protocols Tab.
5. If there is no entry for TCP/IP, click Add, then select TCP/IP and follow on-screen directions.
6. After TCP/IP protocol installation, click on Properties. On the IP Address tab, select the proper adapter (NIC), then select the method of obtaining your IP address. For an isolated network, click on "Specify An IP Address".
7. Complete the IP Address and Subnet Mask according to your network configuration ([Figure 3-5](#)).
8. The Default Gateway and the DNS settings could be needed when connecting to a corporate network. For an isolated network, these settings are not used.
9. Follow the instructions on the screen and reboot as necessary.

Figure 3-5

### Windows NT4 Ethernet card settings





## Configuration in Windows 2000

Refer to [Figure 3-6](#).

1. Click on the Windows Start button.
2. Select Settings, then Control Panel.
3. Click on Network and select Dial-Up Connections.
4. Right click on Local Area Connection, then select Properties.
5. In the General tab window, you should have the TCP/IP protocol listed and selected. If not, click on Install, then select Protocol, and click Add.
6. Select the TCP/IP protocol, then click Install.
7. Go back to the General tab window, select the TCP/IP protocol and click on Properties.
8. Select “Use the Following IP Address” ([Figure 3-6](#)), then enter the IP address and Subnet mask for your network.
9. The Default Gateway and the DNS settings could be needed when connecting to a corporate network. For an isolated network, these settings are not used.
10. Follow the instructions on the screen and reboot as necessary.

*Figure 3-6*

### **Windows 2000 Ethernet card settings**

**Internet Protocol (TCP/IP) Properties**

General

You can get IP settings assigned automatically if your network supports this capability. Otherwise, you need to ask your network administrator for the appropriate IP settings.

Obtain an IP address automatically

Use the following IP address:

IP address: 172 . 16 . 8 . 51

Subnet mask: 255 . 255 . 252 . 0

Default gateway: 172 . 16 . 8 . 1

Obtain DNS server address automatically

Use the following DNS server addresses:

Preferred DNS server: 172 . 16 . 8 . 11

Alternate DNS server: 172 . 16 . 4 . 11

Advanced...

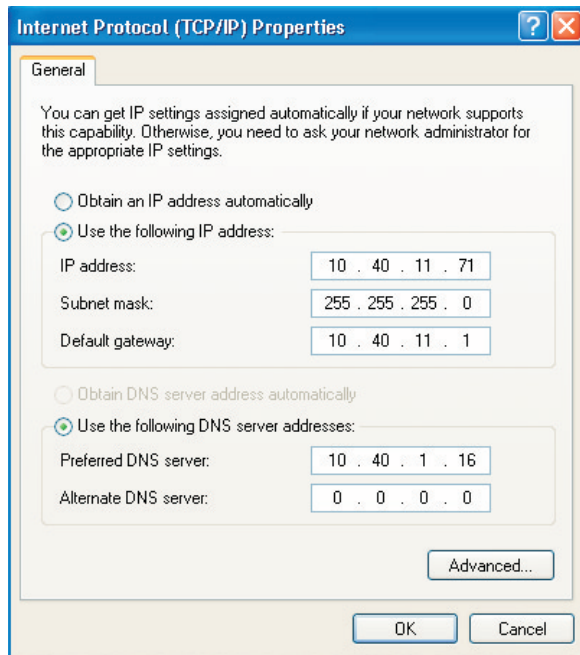
OK Cancel

## Configuration in Windows XP

Refer to [Figure 3-7](#).

1. Click on the Windows Start button.
2. Select Network and click Internet Connections.
3. Under “or pick a control panel icon”, select Network Connections.
4. Right Click on “Local area connection” and select Properties.
5. In the General tab window, you should have the TCP/IP protocol listed and selected. If not, click on Install, then select Protocol, and click Add.
6. Select the TCP/IP protocol, then click Install.
7. Go back to the General tab window, select the TCP/IP protocol and click on Properties.
8. Select “Use the Following IP Address,” then enter the IP address and Subnet mask for your network ([Figure 3-7](#)).
9. The Default Gateway and the DNS settings could be needed when connecting to a corporate network. For an isolated network, these settings are not used.
10. Follow the instructions on the screen and reboot as necessary.

*Figure 3-7*  
**Windows XP network configuration window**



# Troubleshooting

Refer to [Table 3-5](#) for troubleshooting tips concerning the Model 2701's Ethernet connection.

Table 3-5  
**Model 2701 Ethernet troubleshooting**

Problem	Possible causes
Web page opens, not able to connect to 2701 (settings and data fields on the web page are blank or filled with dashes or asterisks).	Subnet mask incorrect (check both the Model 2701 and the PC to make sure they are the same).
	Security not correctly set in IE. Add the IP address of the Model 2701 to trusted sites. Make sure the ActiveX controls are allowed.
	There already is a connection to the 2701 (no more than one connection is allowed at a time).
	Past connection not closed. Cycle power the 2701 to close previous connection (turn off and then back on).
Not able to open the Model 2701 web page.	Incorrect cable type (cross over cables should not be used to connect to hub, straight through cables should not be used to connect directly to the Model 2701 without a hub).
	IP address conflict. Make sure each node (interface card and 2701) has a unique IP address, but share the same Subnet mask and network ID.
	Network device problems. Check the interface cards setup (refer to the specific cards instructions or the PC manual for additional information).
	Use of an unsupported web browser or operating system.
	Mistyped IP address. Check for proper IP address and refresh as necessary.
	Instrument is set to use Serial Interface. On the 2701 front panel, press: Shift >> RS-232 and set to OFF.
	Instrument is set to use DHCP but cannot obtain IP address from DHCP server. If you try to view the IP address and only dashes are shown, then instrument could not obtain IP address. Make sure DHCP server is available on network and is configured properly.
	<i><b>NOTE</b> When using DHCP, it is normal for the instrument to show dashes instead of the IP address when it is first powering up, because it does not obtain the IP address from the server until later in the start up sequence.</i>

Table 3-5  
**Model 2701 Ethernet troubleshooting**

Problem	Possible causes
<i>Not able to open the Model 2701 web page (continued).</i>	Bad cable connection. Make sure that either the 10bt or 100bt LED near the Ethernet connector is on and/or blinking (see <a href="#">Table 1-1</a> ).
<b>Problems with advanced display adapter driver.</b>	A common software glitch exists between some network support software and advanced display adapter software. If the network software does not operate properly, try selecting the standard VGA driver in Windows Setup (under the control panel). If this solves the problem, try obtaining the latest version of the drivers.
<b>Unable to connect to 2701 (connected through corporate LAN).</b>	<p>IP addresses that are assigned by the IS/IT department may take a period of time before they are active. Check with them as to when the IP address will become active.</p> <p>Network IDs may be different in different parts of the corporate network (network design dependent). Make sure you specifically tell the IS/IT where you are going to connect the 2701 to the network as location may determine the 2701's correct subnet.</p> <p>If you have an instrument connected to a router or a switch, the MAC address is usually cached with the IP address for a period of time. The router or switch will not recognize the instrument if the IP address is changed or if the cached IP address is assigned to a different instrument. Contact your IS/IT department for additional details about how the router/switch is configured.</p>

**4**

# Software and Drivers

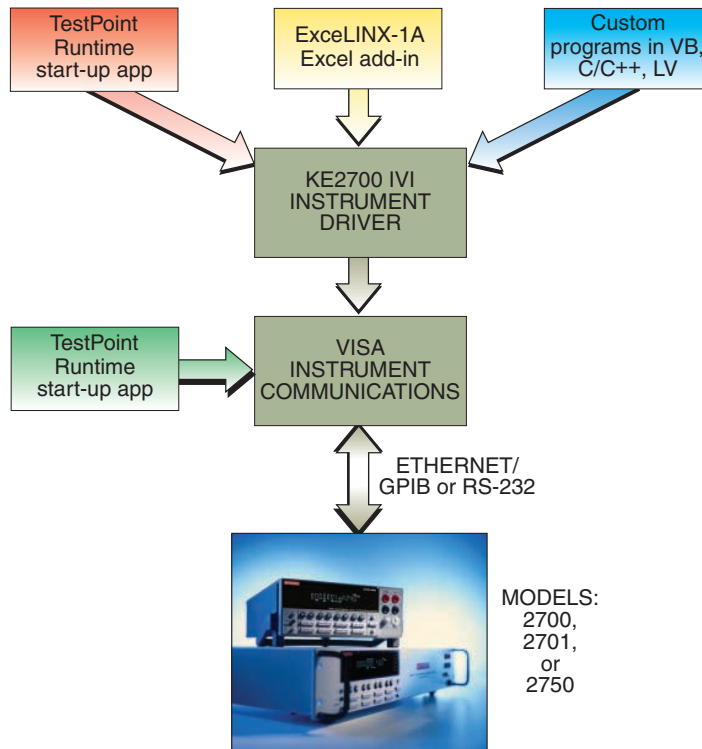
---

# Keithley Integra Series Software Architecture

Figure 4-1 illustrates how Keithley's powerful software tools integrate to provide a full range of application solutions. The individual components are described later in this section. Installation and configuration details are provided at the end of this section.

Figure 4-1

## Software overview



## Built-in web diagnostic tool (free)

To start communicating with a properly connected and configured Model 2701, simply start Microsoft® Internet Explorer® on a PC and type the instrument's IP address into the URL line (for a screen shot of the web page, see [Figure 3-2](#)). The built-in web diagnostic interface allows for easy communication and debugging, without the need to install external software.

This interface makes it easy to read and set network parameters such as IP address, subnet mask, gateway, MAC address (read only), calibration dates, and other data stored in the Model 2701. It also takes readings from the instrument and allows the user to send command strings and receive data. (Refer to the Model 2701 User's Manual for additional information on the web page.)

## Provided software

The Model 2701 includes the following software (supplied on a CD):

- TestPoint runtime start-up software package
- VISA-based IVI style instrument driver

### TestPoint runtime start-up software package

The free TestPoint runtime start-up software package (Figure 4-2) provides basic data logging capabilities, so a system can be up and running almost immediately. A few clicks of the mouse are all it takes to confirm that the system's hardware, wiring, communications, and software drivers are installed and operating correctly. Data from multiple channels of a single 2701's can be saved to disk; up to eight channels of data can be graphed automatically and multiple configurations can be saved to disk.

Refer to Table 4-1 for a description of the TestPoint runtime start-up software packages features. If the application demands greater functionality, this free runtime software can be modified with the TestPoint application development package (described later).

Figure 4-2  
**TestPoint runtime start-up software**

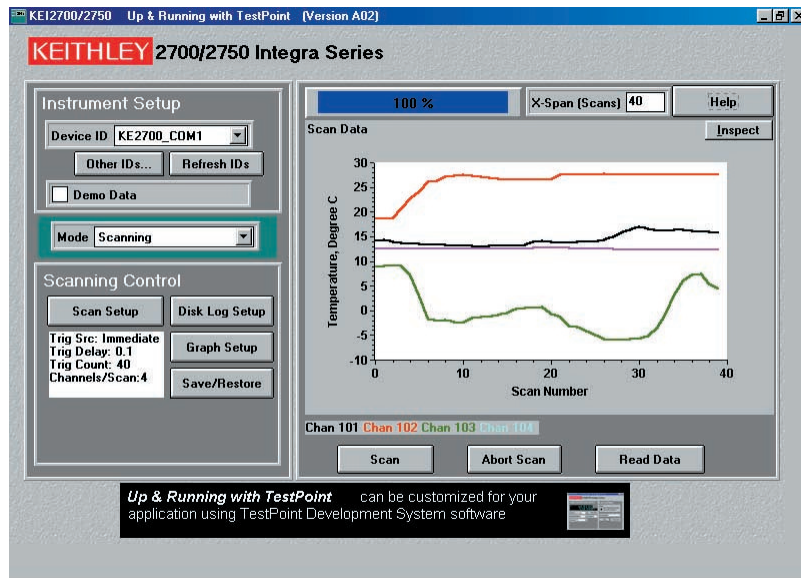




Table 4-1

**TestPoint runtime start-up software—supported features**

<b>Feature</b>	<b>Description</b>
<b>Supported Instrument</b>	2700, 2701, 2750
<b>Supported Measurement Types</b>	DC volts and current AC volts and current Resistance (2-wire and 4-wire) Frequency and period Temperature (Thermocouple, RTD, Thermistor)
<b>Supported Plug-in Switch Modules</b>	7700, 7702, 7708
<b>Not supported</b>	Digital I/O, Analog outputs, on/off control of switches, custom control sequences, math, filtering, limits, and scaling.
<b>System Requirements</b>	Pentium class PC with Windows 98 (SE), Windows NT4 (SR6), Windows ME, Windows 2000, or Windows XP Professional. Model 2700 (Firmware B04 or later) Model 2701 (Firmware A01 or later) Model 2750 (Firmware A02 or later)
<b>Communications</b>	TestPoint runtime uses the KE2700 Instrument Driver for instrument communications. See KE2700 Instrument Driver features and specifications below.

## **KE2700 VISA Based IVI Instrument Driver**

The KE2700 Instrument Driver is provided free with the 2700, 2701, and 2750 instruments. All of Keithley's Integra Series software uses the KE2700 Instrument driver to communicate with the instrument. For experienced programmers who prefer to build fully custom systems from scratch, the KE2700 driver can be used with Application Development environments such as LabView, LabWindows CVI, Visual Basic, C/C++, and TestPoint. The KE2700 driver uses VISA (supplied) to manage communications with the instrument.

The following describes the benefits of using VISA and IVI drivers. Refer to [Table 4-2](#) for descriptions of the KE2700 VISA Based IVI Instrument Driver features.

### **Benefits of VISA (Virtual Instrument Software Architecture)**

- Provides transparent software compatibility with Ethernet, GPIB, and RS-232. No software changes are required when changing communication bus type.
- Hides the complexity of the communications bus using a common programming model for greater ease of use.
- Protects your investment in software development by making programs easily scalable for later reuse.

### **Benefits of IVI (Interchangeable Virtual Instruments) Drivers**

- Protects software development investments by ensuring software compatibility and interchangeability from instrument to instrument within the same family (such as Model 2700, 2701, and 2750).
- Supports a wide range of Application Development Environments such as LabView, LabWindows CVI, Visual Basic, C/C++, and TestPoint.
- Supplies a common programming interface based on the ANSI-C standard.
- Hides the complexity of instrument dependent commands (SCPI).
- Provides online, built-in, context sensitive help.

Table 4-2

**KE2700 VISA Based IVI Instrument Driver—supported features**

Feature	Description
<b>Supported Instruments</b>	2700, 2701, 2750
<b>Supported Measurement Types</b>	All types and ranges supported by the instrument.
<b>Supported Plug-in Switch Modules</b>	All modules supported by the instrument.
<b>System Requirements</b>	Pentium class PC with Windows 98 (SE), Windows NT4 (SR6), Windows ME, Windows 2000, or Windows XP Professional. Model 2700 (Firmware B04 or later) Model 2701 (Firmware A01 or later) Model 2750 (Firmware A02 or later)
<b>Communications Interface Support</b>	Ethernet Keithley GPIB cards (ISA, PCI, PCMCIA) CEC GPIB cards (ISA, PCI) National Instruments GPIB cards (ISA, PCI, PCMCIA) INES GPIB cards (PCMCIA) RS-232 Serial

# Additional software applications

Keithley has the software needed to get the most performance from a Model 2700 or 2750 Multimeter/Switch System. Our broad range of software solutions makes it easy to get R&D, quality assurance, and production applications “Up & Running” quickly and economically. The following programs for the Model 2700/2701/2750 are available separately.

## ExcelINX-1A

ExcelINX-1A (Figure 4-3) is an economical, easy-to-use, add-in utility for Microsoft Excel and Keithley Integra Series Multimeter/Switch systems. No programming is required—configure your measurements quickly using pop-up menus and eliminate time-consuming and error prone programming. Acquire data into a spreadsheet on the fly during a scan or transfer data into a spreadsheet after a scan is completed. A few mouse clicks are all it takes to configure channels, set parameters, triggers, and scan lists. There is no need to launch a separate data logging or data-crunching application; live data streams automatically into an Excel workbook, ready for analysis or charting using all of Excel's powerful built-in tools.

Within minutes of installing ExcelINX-1A on a PC, users can acquire data directly from the Model 2700/2701/2750 instruments. Then employ Excel's graphics, charting, and analysis capabilities to turn that data into useful information, channels of data, or the tools to create a fully custom acquisition and analysis solution. Refer to Table 4-3 for descriptions of the ExcelINX-1A features.

Figure 4-3  
ExcelINX-1A

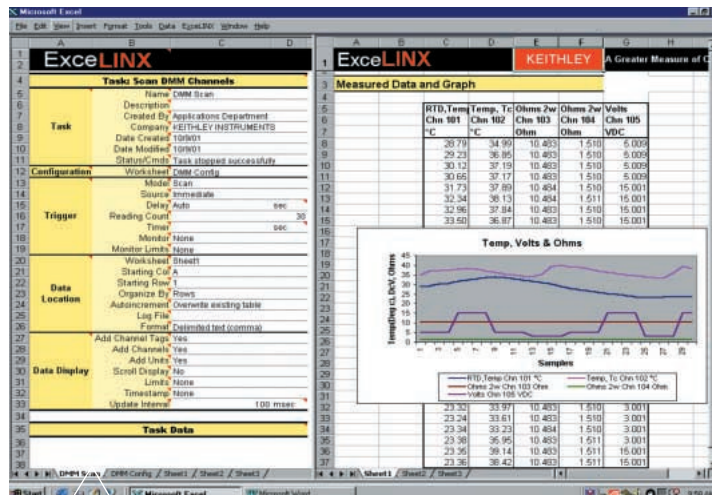


Table 4-3  
**ExceLINX—supported features**

Feature	Description
<b>Supported Instrument Types</b>	2700, 2701, 2750
<b>Supported Measurement Types</b>	All types and ranges supported by the instrument.
<b>Supported Plug-in Switch Modules</b>	7700, 7701, 7702, 7703, 7705, 7706, 7707, 7708, 7709, 7710, 7711, 7712.
<b>Other Features</b>	Full support for all trigger types, monitor scan support, limits can control chassis digital outputs, Visual Basic for Applications interface.
<b>Not supported</b>	Digital I/O on a module, Analog outputs, on/off control of switches, custom control sequences.
<b>System Requirements</b>	Pentium class PC with Windows 98 (SE), Windows NT4 (SR6), Windows ME, Windows 2000, or Windows XP Professional. Excel 97 (SR1) or newer version. Firmware: -Model 2700 (B04 or later) -Model 2701 (A01 or later) -Model 2750 (A02 or later)
<b>Communications</b>	ExceLINX-1A uses the KE2700 Instrument Driver for instrument communications. See KE2700 Instrument Driver features and specifications.

## TestPoint Application Development Package

The TestPoint start-up software can be modified, enhanced, and extended using the full TestPoint Application Development Package, available separately. By using the start-up runtime as a foundation, TestPoint offers the flexibility needed to build basic systems quickly, without extensive programming. TestPoint uses object-oriented, drag-and-drop technology to bring both power and simplicity to data acquisition and test and measurement applications. TestWizards and pre-written application templates in a choice of graphical styles make it simple to create a complete application. Additional objects can be added and modified to create custom enhancements.

Three optional toolkits provide even more capability for TestPoint applications:

- Internet toolkit provides Web-based remote measurements and control.
- Database toolkit provides access to popular database packages like Access, SQL, Oracle, and others.
- Statistical process control (SPC) toolkit adds charts, statistics, and analysis capabilities.

# Provided software and driver installation

**NOTE** *Make sure the instrument is properly connected and configured to a controlling PC before installation of the software or drivers. Installation of the software or the drivers will not correct an improperly configured Ethernet.*

## Installation and configuration

Before installing the software provided with your Model 2701 instrument, make sure the instrument is properly connected and configured to a controlling PC as described in previous sections of this manual. Installation of the software and driver will not correct an improperly configured Ethernet. It is recommended that you use the built-in web page to verify your system set-up and configuration before installing the start-up software and/or instrument driver (if the web page displays and is able to control the Model 2701, the Ethernet is functioning correctly).

### Installing the start-up software and driver

To install the start-up software and the instrument driver, insert the software CD provided with your instrument. The installation utility should run automatically. If it does not start automatically, navigate and run the **install.exe** program in the root directory of the CD. Follow the on-screen prompts to install both the start-up software (TestPoint runtime) and the KE2700 instrument driver.

Although the software provided on the CD is the current version at time of shipment, it is recommended that you visit the Keithley Web site ([www.keithley.com](http://www.keithley.com)) to check for available updates.

### Configuring instrument communications

Before you run the start-up software or use the instrument driver, you must configure the communications with your instrument. Make sure your instrument is properly connected to your computer and then run the Keithley Configuration Utility to configure communications.

When the configuration utility opens, the configuration wizard will also open. The wizard allows you to add, modify, and delete instruments from your configuration. It is recommended that you use the wizard for all routine configuration tasks. The configuration panel provides extra capability for advance configuration tasks.

Use the following steps to configure communications. The example screen captures shown illustrate the steps required to configure the software to communicate to a Model 2701 using Ethernet. Before using this utility, you must have already configured your PC's network communications and chosen your instrument's network address as described earlier in this manual.

**NOTE** *Close all applications that use the KE2700 Instrument Driver before using the configuration utility to make changes.*

### Procedure to start Keithley configuration wizard

1. To start the configuration utility and wizard, open the “Keithley Configuration Panel”.  
From the Start Menu, select:  
**Programs>>Keithley Instruments>>Keithley Configuration Panel**
2. Follow the wizard’s prompts. [Figure 4-4](#) through [Figure 4-10](#) contains an example session of using the wizard.
3. Exit the utility. To access the utility again, select “Show Wizard” from the Help menu.

Figure 4-4

### Keithley configuration wizard window

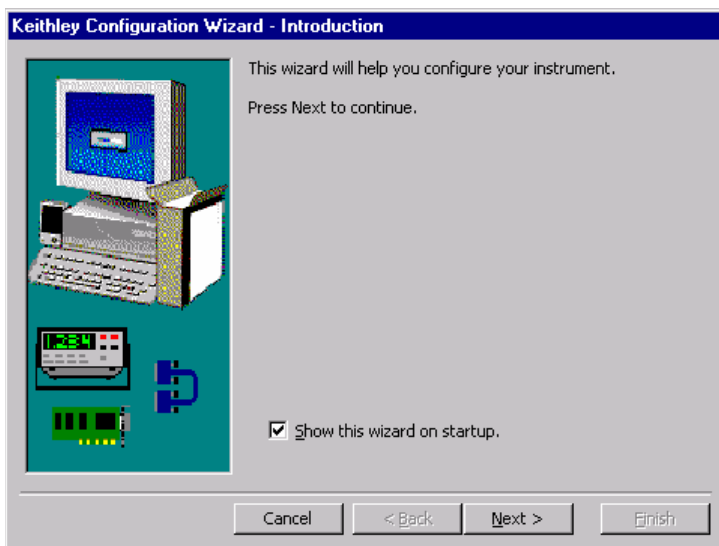


Figure 4-5  
**Select operation window**

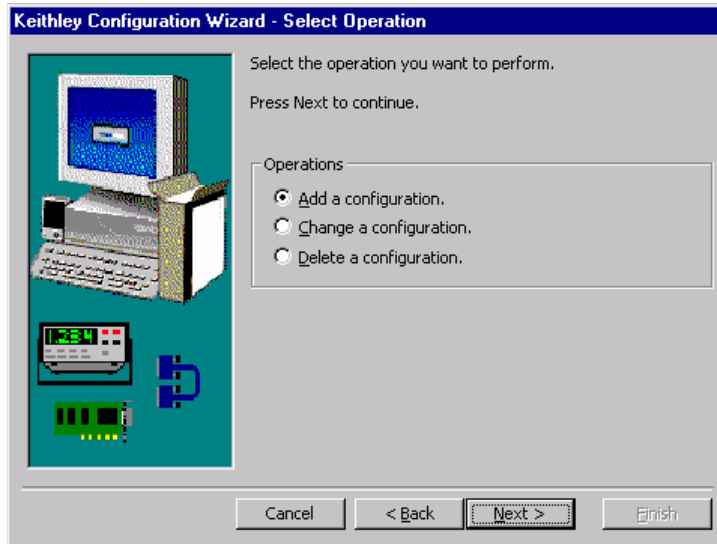


Figure 4-6  
**Select communication bus type window**

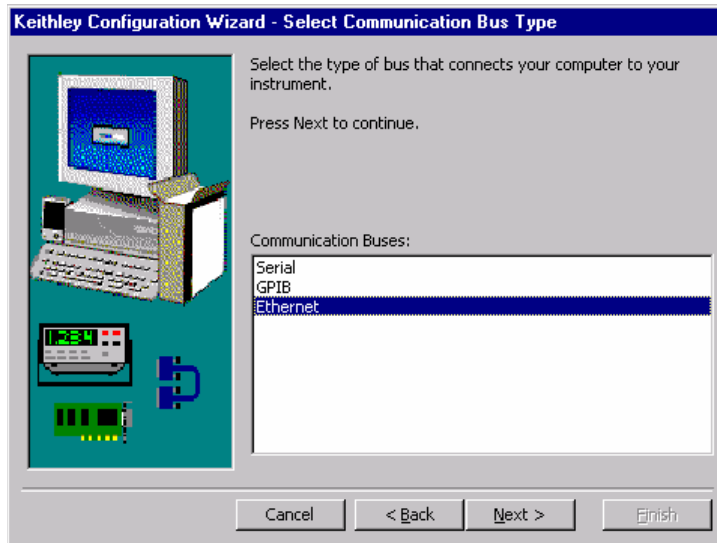
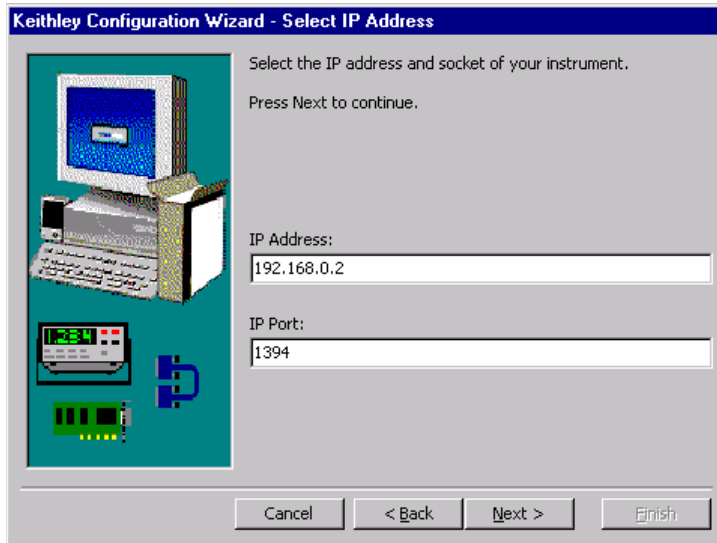




Figure 4-7  
**Select IP address window**



Keithley Configuration Wizard - Select IP Address

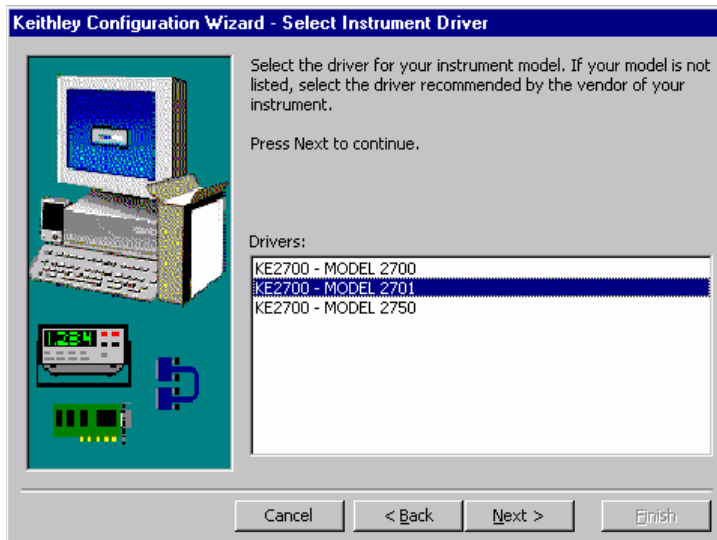
Select the IP address and socket of your instrument.  
Press Next to continue.

IP Address:  
192.168.0.2

IP Port:  
1394

Cancel < Back Next > Finish

Figure 4-8  
**Select instrument driver window**



Keithley Configuration Wizard - Select Instrument Driver

Select the driver for your instrument model. If your model is not listed, select the driver recommended by the vendor of your instrument.  
Press Next to continue.

Drivers:

- KE2700 - MODEL 2700
- KE2700 - MODEL 2701
- KE2700 - MODEL 2750

Cancel < Back Next > Finish

Figure 4-9  
**Assign instrument name window**

**NOTE** Change the name to anything that will help you identify your instrument.

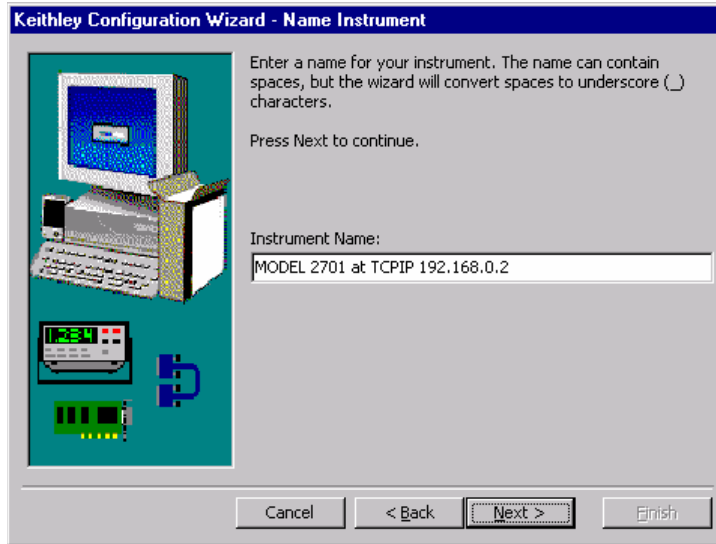
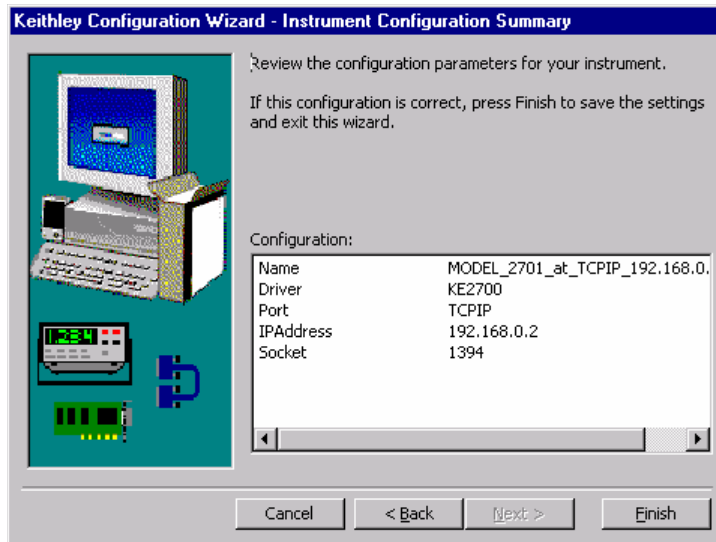


Figure 4-10  
**Summary window**



**NOTE** *Specify the IP address of your instrument as determined earlier in this guide. Leave the IP Port set to 1394 for use with the Model 2701.*

Once you have completed configuring your instrument, you may exit the configuration utility. If you want to run the wizard again, you may select Help>>Show Wizard to reopen the wizard.

### **Advanced configuration**

The configuration panel may be used to adjust advanced configuration settings by those familiar with VISA and IVI Instrument configuration. We recommend you not adjust advanced settings unless you are completely familiar with their purpose and effects.

One advanced setting that many advanced users may wish to adjust is the QueryInstrStatus attribute setting. By default, the KE2700 Instrument Driver checks the instrument for errors after every command. While this provides the safest operation and provides the most useful information in the event of a program or instrument fault, disabling this feature considerably speeds up instrument communications. Advanced users may wish to modify the setting of this attribute as described below. We recommend that you leave this function enabled until you are satisfied your application is operating correctly. Then, turn off the error checking to improve performance.

To change the attributes of QueryInstrStatus, use the following procedure.

### Procedure to set QueryInstrStatus attribute to False

1. If not already running, access the configuration utility (See “Procedure to start Keithley configuration wizard” on page 4-11.).
2. Close the wizard and use the configuration panel as shown [Figure 4-11](#).
3. Select the instrument whose configuration setting you wish to modify.
4. Then double click on the QueryInstrStatus attribute in the right-hand pane of the utility. A pop-up edit box will appear ([Figure 4-12](#)).
5. In the edit box, change the attribute setting to False and press OK.
6. [Figure 4-13](#) will appear. Close the configuration panel (save changes when prompted).

*Figure 4-11  
Advanced configuration window—select instrument*

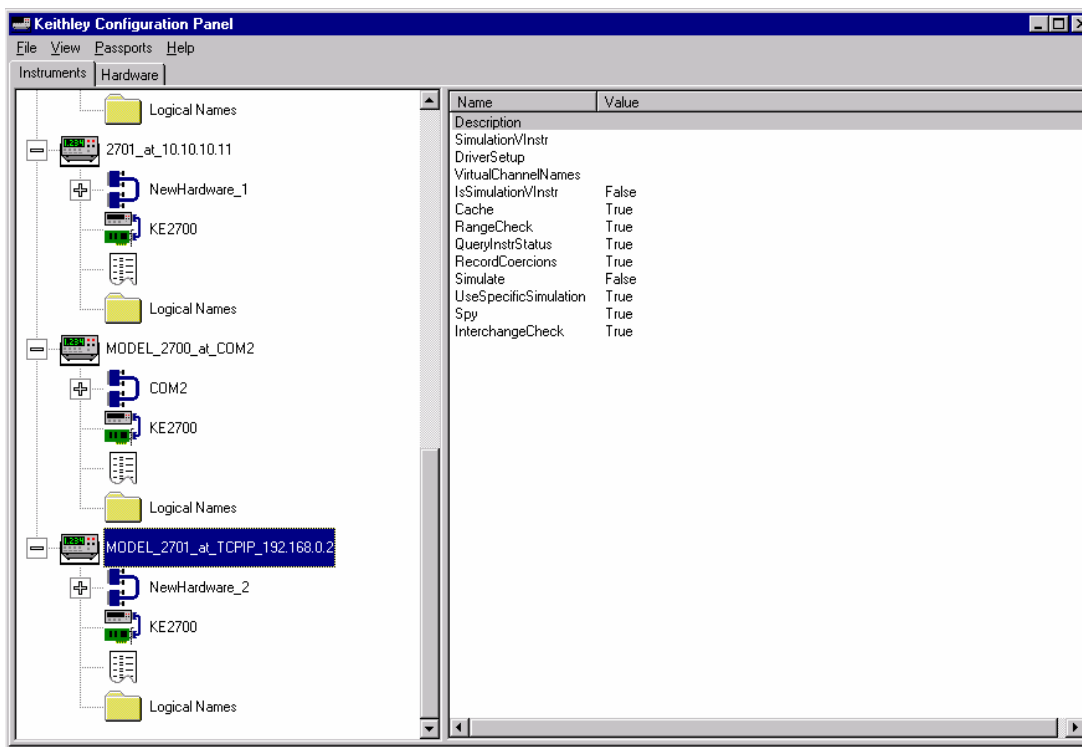


Figure 4-12  
Attribute setting

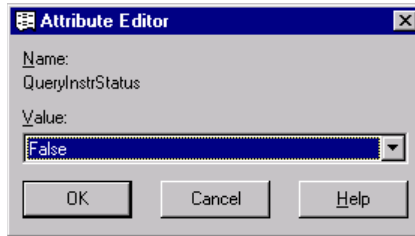
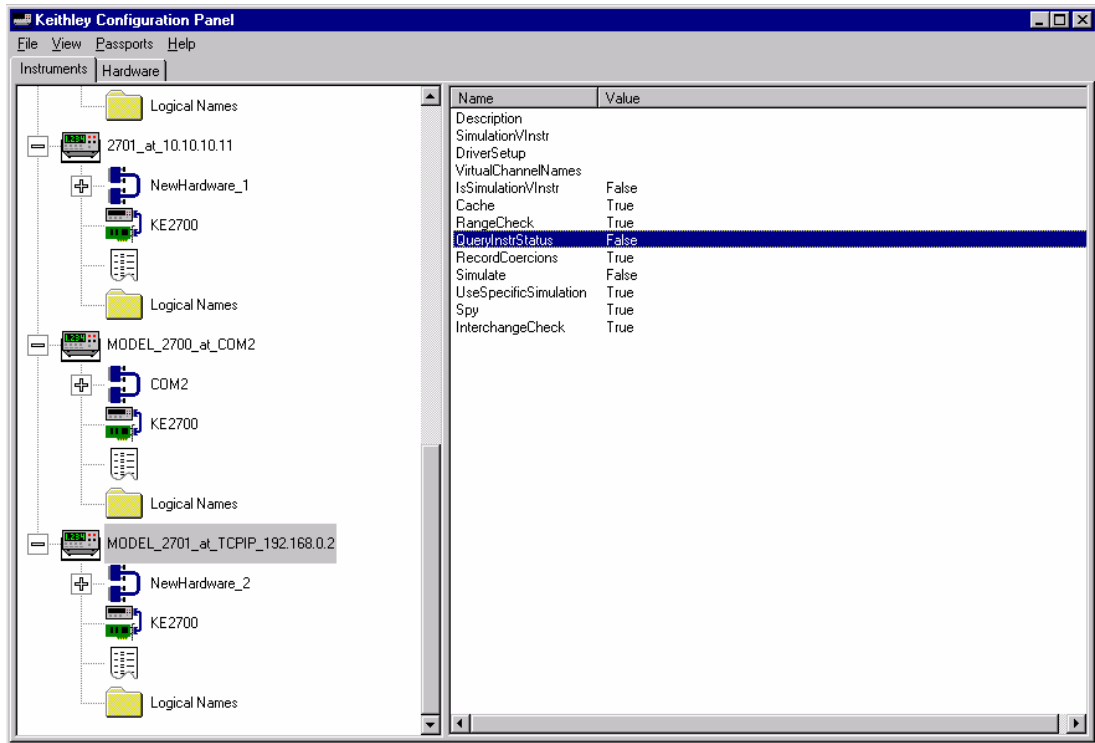


Figure 4-13  
Advanced configuration window—view changed attribute





**A**

# Cable diagrams

---

# Ethernet cables

For 10BaseT and 100BaseTX Ethernet connections, use standard category five (CAT 5) twisted pair patch cables with RJ-45 connectors, not to exceed the standard maximum segment length of 100 meters. The equipment that the device is being attached to will determine whether a straight-thru or cross over cable configuration is required.

## Straight through cables

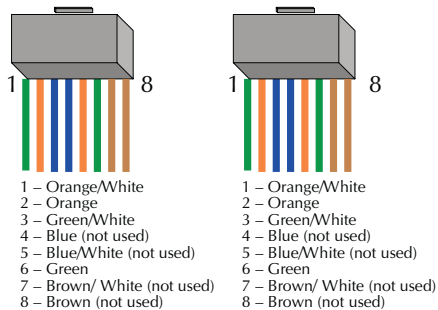
Standard Ethernet straight through cables are required when connecting the device to a standard network hub or switch.

*NOTE* Straight through cables are also referred to as patch cables.

Figure A-1

### ***Straight through cables***

#### Ethernet Straight Through Cables



#### Pin Assignments





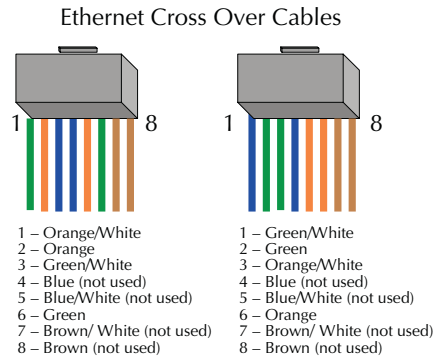
## Cross over cables

Standard Ethernet cross over cables are required when connecting the device directly to the Ethernet port of a PC.

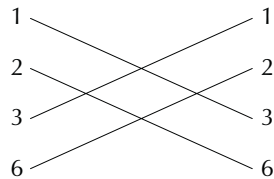
**NOTE** Cross over cables are typically labeled (cross over or XO) at one or both ends.

Figure A-2

### Cross over cables



### Pin Assignments





# B Glossary

---

**ActiveX** — A version of Microsoft's OLE (object linking and embedding) which can directly modify files. Usually digitally signed.

**API (Application Programming Interface)** — A set of callable software functions that applications use to make requests to the operating systems.

**Blue Screen of Death (or Blue Screen)** — A euphemism for the screen that appears when the Windows operating system halts due to a critical error.

**Default Gateway** — The IP address of computer that is attached to the network running TCP/IP that knows how to route data to other networks.

**DNS** — The Domain Name System (DNS) is a database used by TCP/IP applications to map between host names and IP addresses. Each company maintains its own database of information and runs a server program that other systems across the Internet can query. The DNS provides the protocol that allows clients and servers to communicate with each other.

**Dynamic Host Configuration Protocol (DHCP)** — A feature of Windows NT server that automatically assigns IP addresses to hosts on a TCP/IP network whenever the hosts starts up.

**Bridge** — A device that passes network data between two segments of network.

**Ethernet** — A network technology invented by Xerox Corporation and developed jointly by Xerox, DNEC, and Intel.

**Firewall** — A hardware or software component in the data path between the internet and an internal network. The firewall filters packets by examining them on one side and deciding what to pass along to the other side.

**Gateway** — A computer that acts as a translator on the network or as a router between two network technologies. It can also act as a translator between two different network protocols.

**Host** — Defined as anything on the network that can transmit and receive IP packets on a network. This would include workstations, servers, and the Model 2701.

**Hub** — A passive hub is a device that splits the received signals among other connected nodes. An active hub amplifies or repeats incoming signals before distributing them.

**INterNIC (Internet Network Information Center)** — The organization responsible for assigning Internet network addresses and domain names to hosts that are connected to the Internet.

**IP Address** — A unique 32-bit address assigned to each host attached to the network. An IP address specifies both the network and the host address.

**MAC Address** — Media access control is the hosts unique identity. It is a 6 Byte hexadecimal number that can be represented in HEX or decimal. The Model 2701 uses a decimal number, much like an IP address structure to represent the MAC address. The MAC address is usually assigned to the HOST at the factory. The host transmits its address with each packet of data. It may also be referred to as a hardware address, Ethernet address, node ID, or adapter address. This is not required to be known when using an isolated network. A systems administrator may require this when connecting to a corporate network.

**Network** — Two or more computers connected together enabling them to communicate.

**Network Topology** — Geometric organization of nodes and cable links in a LAN (local area network).

**NIC** — Network interface card is a computer card that is installed in a computer that allows the computer to communicate with a network.

**Packet** — A chunk of information that contains both the original data to be transmitted along with additional addressing information. If the packet is too large to be transmitted by the data link layer, the network layer breaks it into multiple pieces, transmits them, then reassembles the packet at the receiving end.

**Peer-to-Peer Network** — A type of network that no two computers have more control over the network than another. Each can act as both a server and a client. This means that each can supply resources to the other peer computers.

**Protocol** — A formal set of communication conventions used by two network nodes to communicate properly with each other.

**Repeater** — A device that amplifies incoming transmission signals before regenerating them on its output. This will maintain signal integrity along a longer media run than is normally possible.

**Router** — A device that forwards data packets from one network to another.

**Server** — See web server.

**Socket** — A virtual port enabling client applications to connect to the applicable server.

**Subnet** — A segment of LAN that is differentiated from other segments through use of an operation called a Subnet mask. This operation is performed on the network's IP address.

**Subnet Mask** — A transformation applied on an IP address enabling creation of subnets.

**TCP/IP** — Transmission Control Protocol/Internet Protocol. A set of network protocols and associated tools that originated in the UNIX and internet environments. It has become the standard protocol used when configuring networks.

**Topology** — See network topology.

**Web Server** — A program accepting requests for information framed conforming to HTTP (HyperText Transfer Protocol). The web server processes the requests and provides the requested information.

**Winsock** — An open standard specifying how a dynamic link library (DLL) should be written to provide TCP/IP support.

**10Base2** — Coaxial cable running at 10Mbit/sec with a distance limit of 185 meters per segment.

**10Base5** — Thick coaxial cable running at 10Mbit/sec with a distance limit of 500 meters per segment.

**10BaseT/100BaseTX** — Unshielded twisted pair running 10/100 Mbit/sec. Maximum cable length 100m.



---

# Index

## A

Address restrictions [3-4](#)

## B

Built-in web diagnostic tool [4-3](#)

## C

Changing Model 2701 TCP/IP addresses [3-7](#)  
classes [3-4](#)

Communication Protocol [3-2](#)

Configuration in Windows 2000 [3-13](#)

Configuration in Windows 95/98/ME [3-11](#)

Configuration in Windows NT4 [3-12](#)

Configuration in Windows XP [3-14](#)

Configuring a Network Interface Card  
(NIC) [3-10](#)

Configuring TCP/IP addresses [3-1](#)

Connector location [1-4](#)

Contact information [1-3](#)

Corporate network connection [2-8](#)

Cross over cables [A-3](#)

## D

DCHP [3-2](#)

default TCP/IP addresses [3-7](#)

Direct connection [2-3](#)

Direct connection (isolated network) [3-4](#)

DNS [3-3](#), [3-11](#), [3-12](#)

    Window 98/ME [3-11](#)

    Windows 2000 [3-13](#)

    Windows NT4 [3-12](#)

    Windows XP [3-14](#)

drivers [4-10](#)

Dual interface card connection [2-6](#)

## E

Ethernet Cables [A-2](#)

Ethernet interface [1-3](#)

ExceLINX-1A [4-8](#)

## F

Features [1-3](#)

## G

General information [1-2](#)

Glossary [B-1](#)

## H

Hub connection [2-4](#)

## I

Instrument Driver [4-6](#)

Interchangeable Virtual Instruments [4-6](#)

Internal Web Page [3-9](#)

IP address byte location sample [3-6](#)

ipconfig [3-10](#)

IS department [3-2](#)

IT/IS [3-3](#)

## M

Model 2701 Rear Panel [1-4](#)

## P

Provided software [4-4](#)

## S

Selecting an address [3-5](#)

Software and drivers [4-1](#), [4-10](#)

software applications [4-8](#)

Software Architecture [4-2](#)

Status LEDs [1-5](#)

Straight through cables [A-2](#)

Supported environments [1-5](#)

## T

Test point software [4-4](#)

TestPoint Application Development  
Package [4-9](#)

TestPoint runtime [4-4](#)

---





Specifications are subject to change without notice.

All Keithley trademarks and trade names are the property of Keithley Instruments, Inc.

All other trademarks and trade names are the property of their respective companies.

**KEITHLEY**

**Keithley Instruments, Inc.** 28775 Aurora Road • Cleveland, Ohio 44139 • 440-248-0400 • Fax: 440-248-6168  
**1-888-KEITHLEY (534-8453) • [www.keithley.com](http://www.keithley.com)**

**Sales Offices:**

<b>BELGIUM:</b>	Bergensesteenweg 709 • B-1600 Sint-Pieters-Leeuw • 02-363 00 40 • Fax: 02-363 00 64
<b>CHINA:</b>	Yuan Chen Xin Building, Room 705 • 12 Yumin Road, Dewai, Madian • Beijing 100029 • 8610-82251886 • Fax: 8610-82251892
<b>FINLAND:</b>	Halsuantie 2 • 00420 Helsinki, Finland • 09-53 06 65 60 • Fax: 09-53 06 65 65
<b>FRANCE:</b>	3, allée des Garays • 91127 Palaiseau Cédex • 01-64 53 20 20 • Fax: 01-60 11 77 26
<b>GERMANY:</b>	Landsberger Strasse 65 • 82110 Germering • 089-84 93 07-40 • Fax: 089-84 93 07-34
<b>GREAT BRITAIN:</b>	Unit 2 Commerce Park, Brunel Road • Theale, Berkshire RG7 4AB • 0118 -929 75 00 • Fax: 0118- 929 75 19
<b>INDIA:</b>	1/5, Eagles Street • Langford Town • Bangalore 560 025 • 080 212 80-27 • Fax: 080 212 80 05
<b>ITALY:</b>	Viale San Gimignano, 38 • 20146 Milano • 02-48 39 16 01 • Fax: 02-48 30 22 74
<b>JAPAN:</b>	New Pier Takeshiba North Tower 13F • 11-1, Kaigan 1-chome • Minato-ku, Tokyo 105-0022 • 81-3-5733-7555 • Fax: 81-3-5733-7556
<b>KOREA:</b>	2FL., URI Building • 2-14 Yangjae-Dong • Seocho-Gu, Seoul 137-888 • 82-2-574-7778 • Fax: 82-2-574-7838
<b>NETHERLANDS:</b>	Postbus 559 • 4200 AN Gorinchem • 0183-63 53 33 • Fax: 0183-63 08 21
<b>SWEDEN:</b>	c/o Regus Business Centre • Frosundaviks Allé 15, 4tr • 16970 Solna • 08-50 90 46 00 • Fax: 08-655 26 10
<b>TAIWAN:</b>	13F-3, NO. 6, Lane 99, Pu-Ding Road, Hsinchu, Taiwan, ROC. • 886-3-572-9077 • Fax: 886-3-572-9031

© Copyright 2003 Keithley Instruments, Inc.

Printed in the U.S.A.

5/03