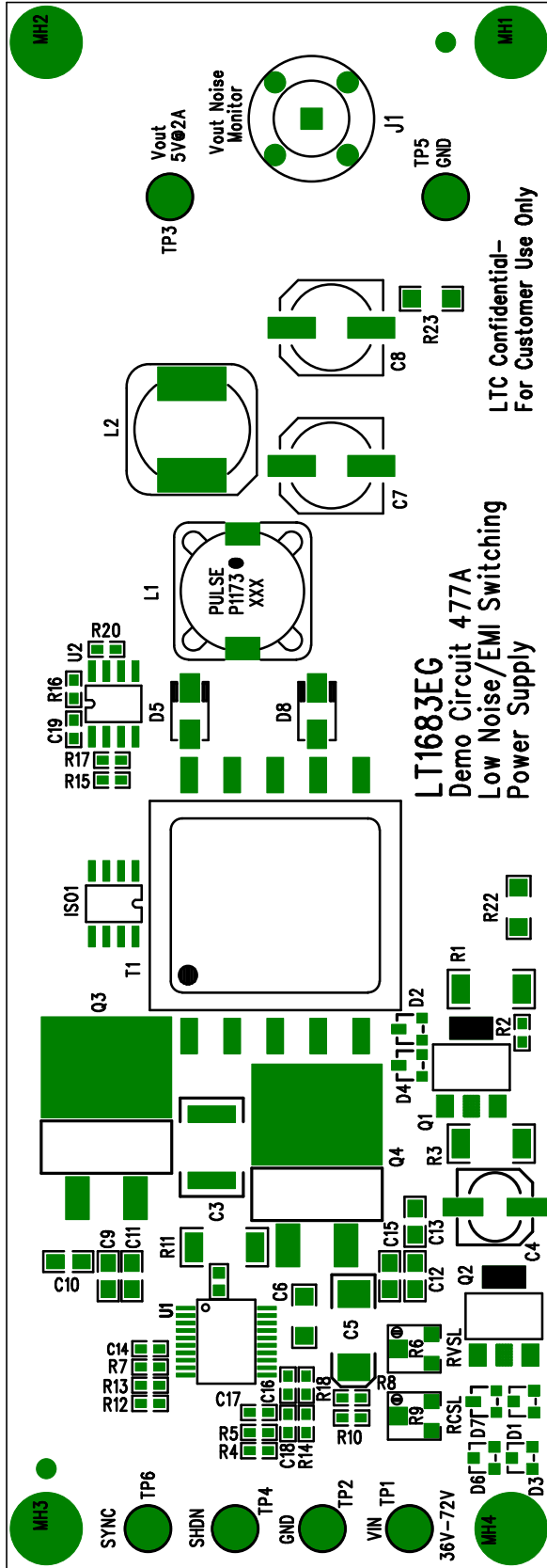


Demo Board 477 Rev A
 LT1683EG


Silkscreen Top



LTC Confidential—
 For Customer Use Only

LT1683EG
 Demo Circuit 477A
 Low Noise/EMI Switching
 Power Supply

Assembly Top Drawing

| | | | | | | | |
|---|-------|--|------|--------------|------------|------|---|
|  | | 1630 McCarthy Blvd. Milpitas, CA 95035 PH: (408)432-1900 | | | | | |
| | | TITLE: LT1683EG, Low Noise/EMI Switching Power Supply | | | | | |
| APPROVALS | INIT | DATE | SIZE | DEMO CIRCUIT | 477 | REV. | A |
| DRAWN | CHECK | DESIGN | ENGR | NONE | 477 | A | A |
| SCALE = NONE | | | | DES-230567 | SHT 1 of 2 | | |