



# Measurements International

*Metrology is Our Science, Accuracy is Our Business™*

AIR BATHS 9300A & 9300

## 9300A

- Volume 106 litres
- Range +15 °C to 40 °C
- Stability  $\pm 0.005$  @ 23 °C
- Peltier cooled
- Fast heating/cooling rate
- Stainless steel construction
- Perfect for temperature coefficient measurements



9300A SHOWN



9300 SHOWN

## 9300

- Volume 50 litres
- Range +15 °C to 35 °C
- Stability  $\pm 50$  mK for  $\pm 1$  °C
- Peltier cooled
- Fast heating/cooling rate
- Temperature band protection
- Perfect for temperature coefficient measurements

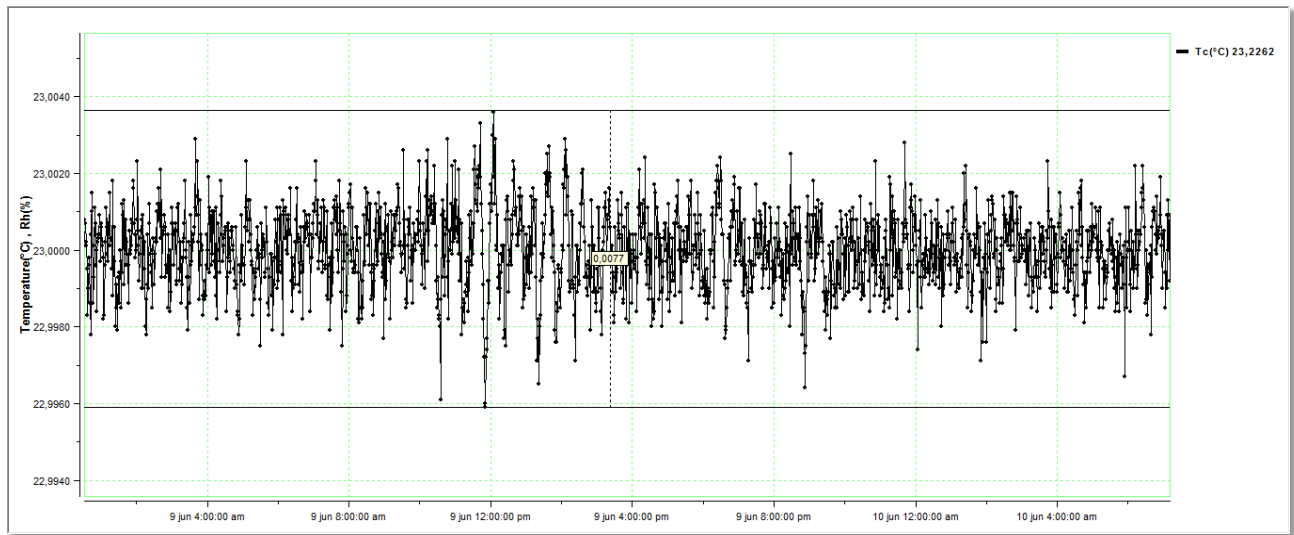
*Metrology is Our Science, Accuracy is Our Business™*



**Measurements International**  
*Metrology is Our Science, Accuracy is Our Business™*

AIR BATHS 9300A & 9300

## CHAMBER TEMPERATURE STABILITY GRAPH AT +23 °C



*Metrology is Our Science, Accuracy is Our Business™*



# Measurements International



Metrology is Our Science, Accuracy is Our Business™

AIR BATHS 9300A & 9300

## TECHNICAL DATA

### Series of Temperature Controlled Air Bath

Specifications: Rev 1

	9300A	9300
		
External Dimensions (L x W x H)	432 x 660 x 940 mm	527 x 451 x 711 mm
Internal Dimensions (L x W x H)	330 x 510 x 630 mm	356 x 330 x 610 mm
Volume (L)	~ 106	~ 50
Temperature Range (°C)	+15...+40	+15...+35
Temperature Display Resolution (°C)	0.001	0.1
Temperature Set Resolution (°C)	0.001	0.1
Temperature Stability (°C)	± 0.005 @ 23 °C	± 0.050 @ 23 °C
Temperature Uniformity (°C)	± 0.01 @ 23 °C ± 0.05 @ 15 °C ± 0.10 @ 35 °C	± 0.1 @ 23 °C ± 0.2 @ 15 °C ± 0.3 @ 35 °C
Heating Rate	~ 100 min (+15 °C...+40°C)	~ 200 min (+15 °C...+35 °C)
Cooling Rate	~ 100 min (+40 °C...15 °C)	~ 200 min (+40 °C...15 °C)
Temperature Control	PID	PID
Power Supply	100 - 240 V 50/60 Hz	85 - 265 V 47/63 Hz
Wattage (W)	300	100
Interface	GPIB	None
Shelve	2	2
Access Port	1 x 50 mm Dia	1 x 50 mm Dia
Weight (kg)	~ 73	~ 22

Metrology is Our Science, Accuracy is Our Business™

#### Corporate Headquarters

**Measurements International**  
PO Box 2359, 118 Commerce Drive  
Prescott, Ontario, Canada K0E 1T0  
Phone: 613-925-5934  
Fax: 613-925-1195  
Email: sales@mintl.com  
Toll Free: 1-800-324-4988

#### Worldwide Offices

**MI-USA**  
Phone: 407-706-0328  
Email: sales@mintl.com

**MI-China**  
Phone: +(86) 10-64459890  
Email: sales@mintl.com

**MI-Europe**  
Phone: +(420) 731-440-663  
Email: sales@mintl.com

**MI-Japan**  
Phone: +(81) 72 39 64 660  
Email: kaz@mijpn.com

**MI-India**  
Phone: +(91) 98 10 134 932  
Email: sales@MILLP.co.in



www.mintl.com