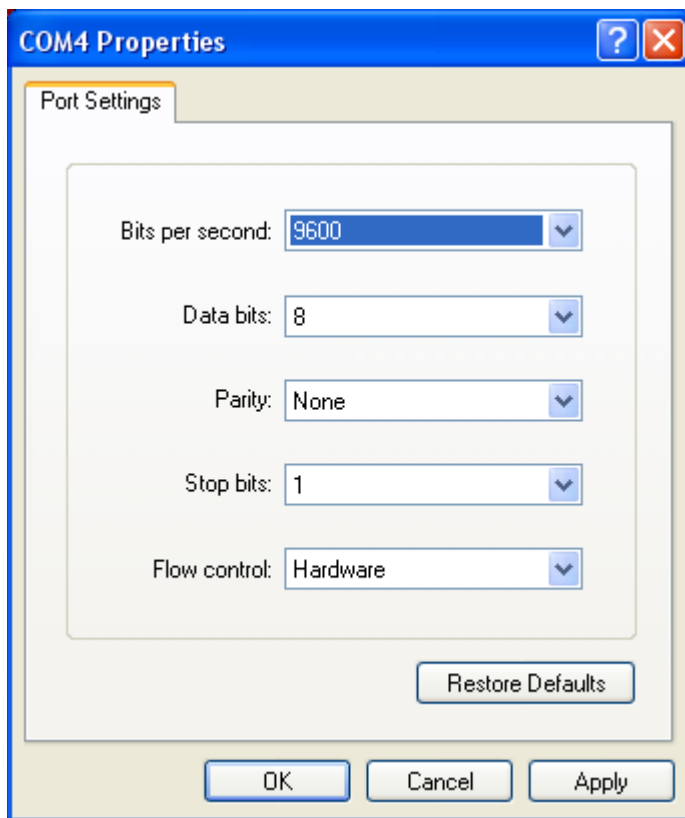


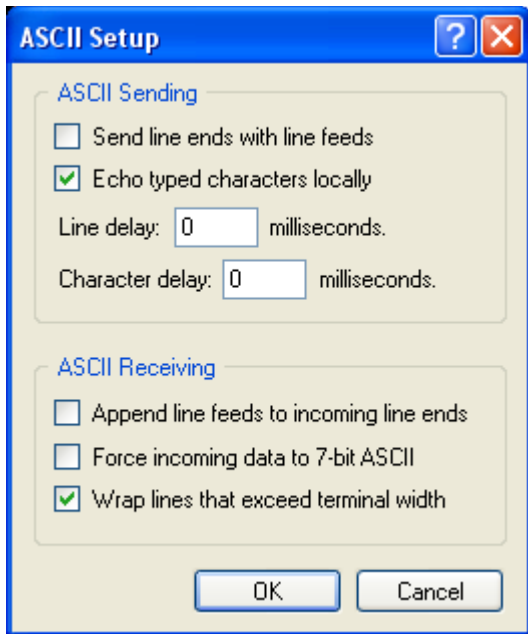


## Using HyperTerminal to communicate with an SR620

Make sure that you're connected to the Serial Port and not the Printer Port on the rear panel

1. Power on reset the SR620
2. Open Hyper Terminal and name your connection. Then Click **OK**.
3. Make sure the COM port is correct. Then Click **OK**.
4. Set the Bits per second: to **9600**, Data bits: **8**, Parity: **None**, Stop bits: **1**, Flow control: **Hardware**. Click **OK**.
5. Go to the **Properties** Menu under the **File** Tab.
6. Click on **Settings** then **ASCII Setup**.
7. Put a check mark in the box next to **Echo typed characters locally**, then Click **OK** and then **OK** to exit the properties.





8. Hit the return key several times. The "ACT" light on the SR620 should turn on and off.
9. Type `*idn?` , Then the return key
10. Hyper Terminal should return the line "StanfordResearchSystems,SR620,0xxx,1.48" (xxx=the serial number of the instrument"