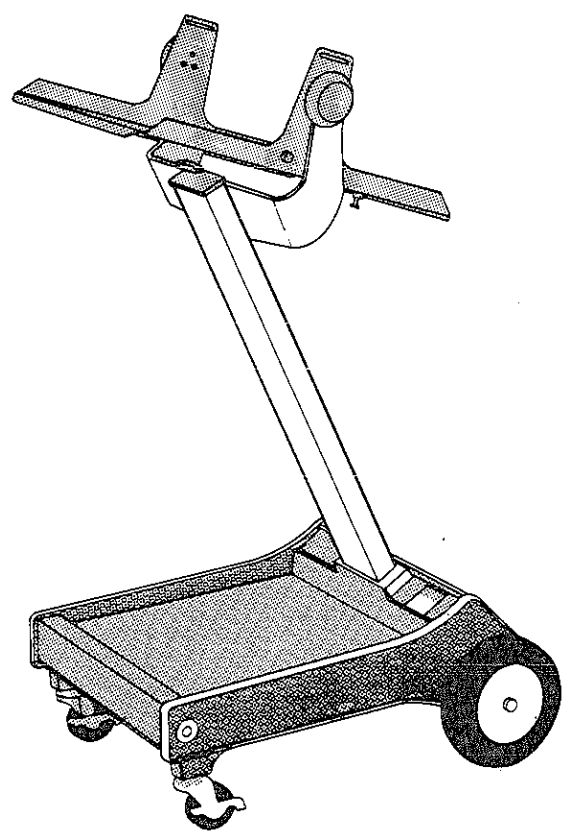
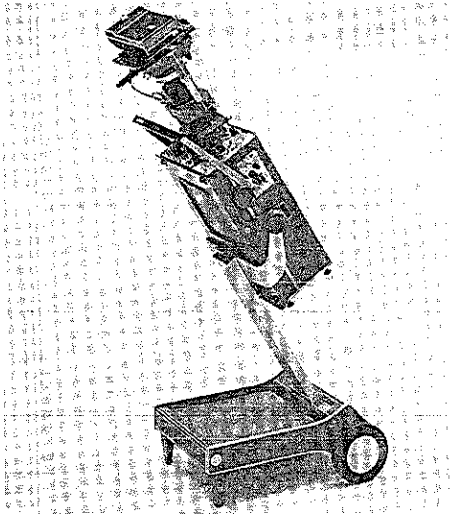


200C SCOPE-MOBILE[®]



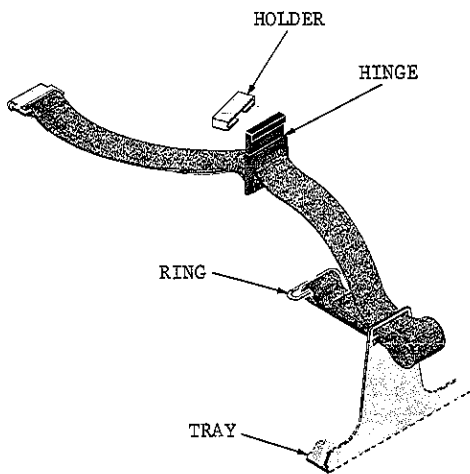
200C SCOPE-MOBILE



This specially designed scope-mobile can be utilized with a full complement of camera equipment. But when using it in this situation, it is advisable that the tray be in the latch position as shown. This stabilizes the instrument, insuring motionless position when the camera is being used to capture a specific waveform.



When transporting the scope-mobile, place the tray in the latch position as shown. It may be easily moved up or down stairs and from one area to another.



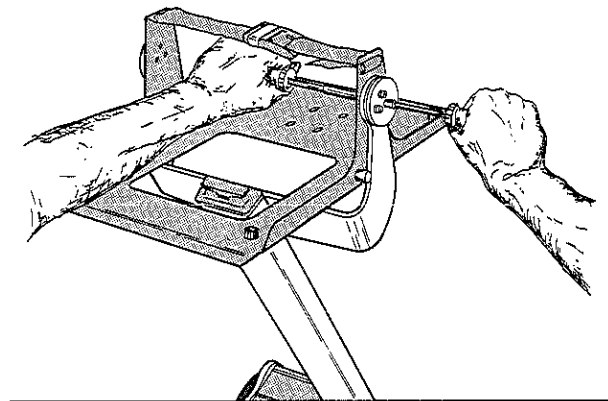
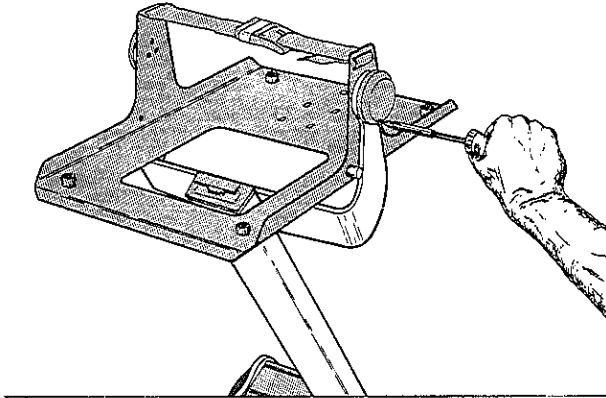
To attach strap assembly to the tray, thread plain end through double slotted side as shown.

To attach strap assembly to the tray, thread plain end through double slotted side as shown. Make the strap configuration similar to the diagram. When you have the approximate length to secure the instrument to the scope-mobile, insert the ring through the loop in the strap and cinch up tight. Slip the holder onto the strap and slide to the approximate position shown in the diagram.

Hook the free end through the single slot in the tray. Press the black hinge flat against the strap atop the instrument and position holder in slot of hinge.

If instrument is not securely strapped to the tray, slip back the holder releasing pressure and take up slack at the double slotted side of the tray.

BRAKE ADJUSTMENT



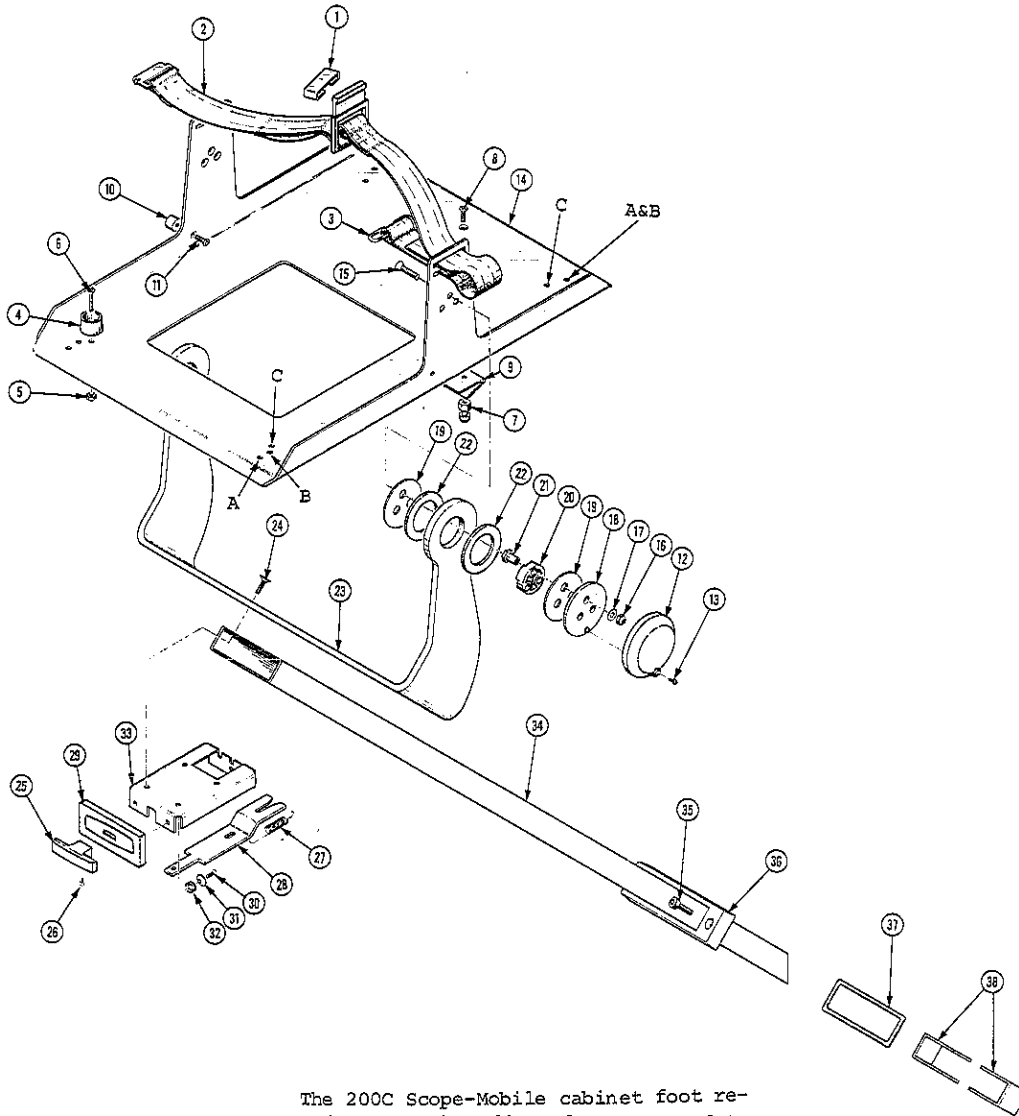
Due to the convenient brake system, the tray can be stabilized in many positions. Adjustments of the brake for more or less tension can be done quickly.

With a No. 1 phillips head screwdriver, remove the securing screw and brake cover, exposing the adjusting nuts. This procedure should be followed for both brakes.

Next take a Posidrive screwdriver and double check that the 3 screws through the tray on both sides are securely tightened. Then while still maintaining pressure on each of the screws, take a 3/8" nutdriver and adjust each of the 3 self-locking brake nuts (#16) on each side to the desired tension. Double check that screws (#15) are still tight, otherwise brake adjustment will be ineffective.

Note: There is an inner nut in the brake assembly, see drawing page 4, item #21.

Figure 1



The 200C Scope-Mobile cabinet foot retainers can be adjusted to accommodate to following instruments.

- A. 453, 453A Series & 454, 454A Series
- B. 491
- C. 432, 434, 465, 475, and 485, 435

Note: Screws (#15) have Posidrive heads. Use of Phillips screwdriver to turn these screws may result in the heads becoming damaged. Also, some tray assemblies were assembled with Loctite at #15 into #21. It is possible to separate by unscrewing with a Posidrive after first removing the brake nuts (#16) and the nylon bearing (#20). After the nylon bearing is removed, securely hold each inner hex head spacer post with a 3/8 inch socket or wrench. In the event this cannot be done or the screw head has become damaged, the screws may be removed easily by drilling off their heads with a 1/4" drill bit without damage to the tray or #20.

FIGURE 1

Fig. & Index No.	Tektronix Part No.	Serial/Model No. Eff	Model No. Dscont	Qty	1	2	3	4	5	Name & Description	Mfr Code	Mfr Part Number
1-	-----	-----		-						200C SCOPE-MOBILE		
-1	352-0128-00			1						. HOLDER,LOAD BDR:0.480 X 0.930 INCH	80009	352-0128-00
-2	346-0049-02			1						. STRAP,ASSY:	80009	346-0049-02
-3	354-0308-00			1						. RING,BELT LOOP:1.875 X 0.406,0.125 D,SST	80009	354-0308-00
-4	343-0419-00			4						. RTNR,CAB.FOOT:PLASTIC (ATTACHING PARTS FOR EACH)	80009	343-0419-00
-5	210-0457-00			1						. NUT,PLAIN,EXT W:6-32 X 0.312 INCH,STL	83385	OBD
-6	211-0522-00			1						. SCREW,MACHINE:6-32 X 0.625,FLH,100 DEG - - - * - - -	83385	OBD
-7	355-0119-00			1						. STUD,SNAPSLIDE:1.0 W X 0.50 HEX ONE END (ATTACHING PARTS)	80009	355-0119-00
-8	212-0506-00			1						. SCREW,MACHINE:10-32 X 0.375 INCH,FLH STL - - - * - - -	83385	OBD
-9	214-0940-00			1						. SPRING,FLAT:1.0 W,30 DEG V SHAPED	80009	214-0940-00
-10	105-0060-00			2						. STOP,TILT TRAY:0.53 OD X 0.390 L,AL (ATTACHING PARTS FOR EACH)	80009	105-0060-00
-11	212-0560-00			1						. SCREW,MACHINE:10-32 X 0.312 INCH,FLH STL - - - * - - -	75497	OBD
-12	200-0768-00			2						. COVER,BK ASSY:2.375 OD X 0.513 H,PLSTC (ATTACHING PARTS FOR EACH)	80009	200-0768-00
-13	211-0007-00			1						. SCREW,MACHINE:4-40 X 0.188 INCH,PNH STL - - - * - - -	83385	OBD
-14	436-0075-05			1						. TRAY,TSTEQ DLY:SCOPE-MOBILE (ATTACHING PARTS)	80009	436-0075-05
-15	212-0586-00			6						. SCREW,MACHINE:10-32 X 0.875,OVH,STL	83385	OBD
-16	220-0472-00			6						. NUT,SLFLKG,HEX:10-32 X 0.375 HEX,STL	22599	22NTM-02
-17	210-0805-00			6						. WASHER,FLAT:0.204 ID X 0.438 INCH OD,STL	12327	OBD
-18	386-1266-00			2						. PL,BRK BACKING:2.25 OD X 0.125,AL	80009	386-1266-00
-19	386-1265-00			4						. PLATE,BRAKE:2.125 OD X 0.031 SST	80009	386-1265-00
-20	401-0040-00			2						. BEARING,SLEEVE:1.118 OD X 0.325"	80009	401-0040-00
-21	129-0133-00			6						. SPACER,POST:0.495 L X 0.375 HEX,1 END	80009	129-0133-00
-22	107-0027-00			4						. LINING,FRICTION:1.156 ID X 2.125 OD - - - * - - -	80009	107-0027-00
-23	407-0381-04			1						. BRACKET,TRAY:SCOPE-MOBILE (ATTACHING PARTS)	80009	407-0381-04
-24	213-0162-00			4						. SCREW,CAP,SCH:0.25-25 X 0.750,STL - - - * - - -	78189	OBD
-25	367-0078-00			1						. HANDLE,LATCH:2.0 W X 0.718 INCH HIGH,PLSTC (ATTACHING PARTS)	80009	367-0078-00
-26	211-0541-00			1						. SCREW,MACHINE:6-32 X 0.25"100 DEG,FLH STL - - - * - - -	83385	OBD
-27	214-0942-00			1						. SPRING,HLEXT:0.315 OD X 1.4 L	04811	OBD
-28	105-0058-00			1						. LCH,SNAPSLIDE F:1.0 W X 5.595 INCHES L,STL	80009	105-0058-00
-29	200-0771-00			1						. CAP,END COLUMN:3.17 X 1.29 INCH,PLSTC (ATTACHING PARTS)	80009	200-0771-00
-30	213-0068-00			2						. SCR,TPG,THD CTG:4-40 X 0.50 INCH,FNL STL	83385	OBD
-31	210-1038-00			2						. WASHER,SPR TNSN:0.203 ID X 0.427" OD,STL - - - * - - -	78189	3530-10-01
-32	214-0943-00			2						. SPRING,HLCPS:0.415 ID X 0.312 FREE LENGTH	04811	OBD
-33	407-0382-00			1						. BRACKET,FSTNR:4 X 2.562 INCH,AL	80009	407-0382-00
-34	426-0383-04			1						. COL,SCOPE CART: (ATTACHING PARTS)	80009	426-0383-04
-35	213-0163-00			2						. SCREW,CAP,SCH:0.25-20 X 0.625,STL	74445	OBD
	210-0716-00			1						. RIVET,BLIND:0.125 DIA,0.125-0.25 GRIPL - - - * - - -	07707	SSD-44-22BS
-36	214-0944-02			1						. COLLAR,COL SPRT:	80009	214-0944-02
-37	354-0310-00			1						. RING,RUBBER:2.25 ID X 2.50 OD	07322	8228/3664
-38	361-0162-00			2						. SPCR,COLLAR AS:U-SHAPE,1.335 W X 1.42" H	80009	361-0162-00

200C SCOPE-MOBILE

FIGURE 2

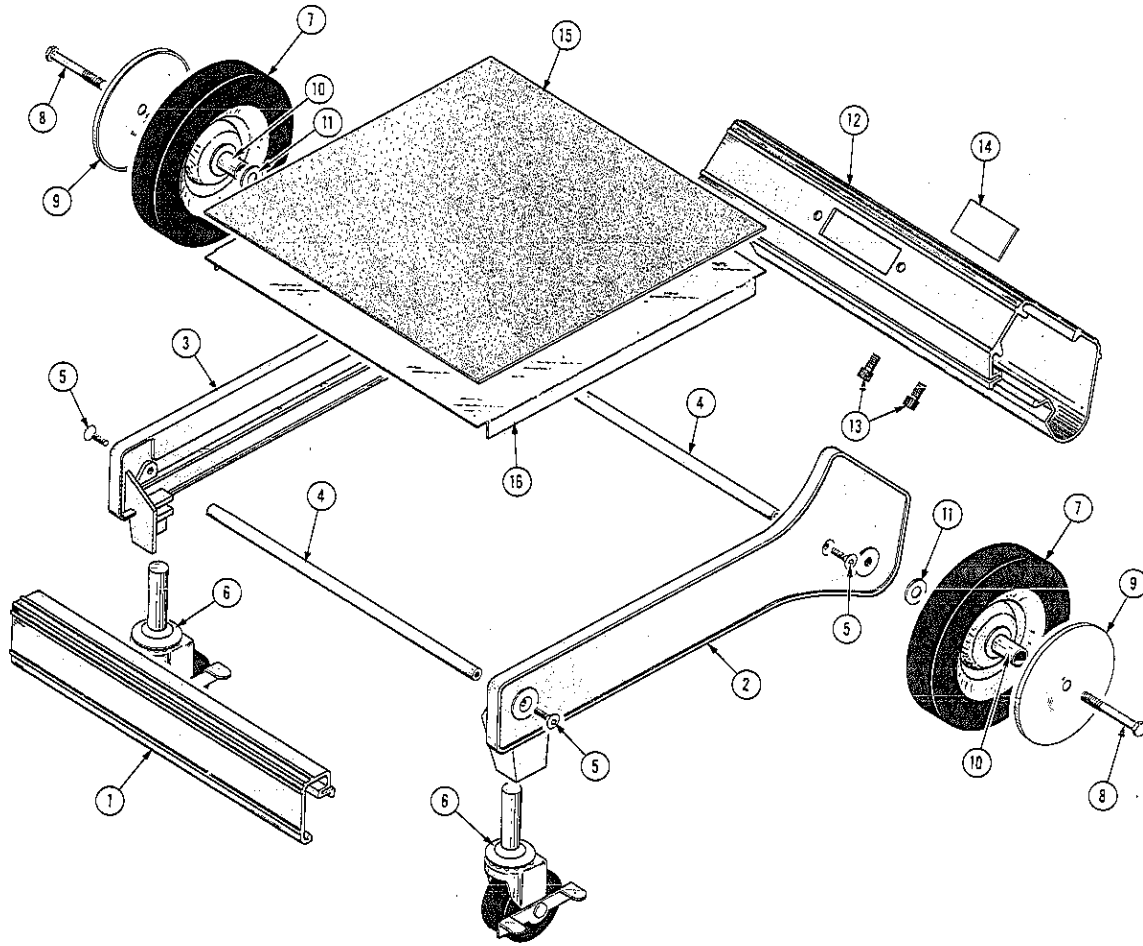


FIGURE 2

Fig. & Index No.	Tektronix Part No.	Serial/Model No. Eff	Dscont	Qty	1	2	3	4	5	Name & Description	Mfr Code	Mfr Part Number
2-	-----			-						200C SCOPE-MOBILE		
-1	426-0381-00			1						. FR BASE,SCOPE:FRONT,WRAPAROUND	80009	426-0381-00
-2	426-0379-02			1						. FR BASE,SCOPE:	80009	426-0379-02
	401-0063-00			1						. . THIMBLE,CASTER:0.437 ID X 0.562 OD X 2.02 L	06004	#16RP
-3	426-0380-02			1						. FR BASE,SCOPE:	80009	426-0380-02
	401-0063-00			1						. . THIMBLE,CASTER:0.437 ID X 0.562 OD X 2.02 L	06004	#16RP
-4	384-0677-00			2						. SPACER,ROD:0.355 OD X 11.968 INCHES LONG	80009	384-0677-00
										(ATTACHING PARTS FOR EACH)		
-5	213-0165-00			2						. SCREW,CAP,SCH:0.25-20 X 1.0 INCH,STL	78189	OBD
										- - - * - - -		
-6	401-0062-00			2						. CASTER,SWIVEL:2.0 WHEEL,W/STEM 1.875" L	06004	#SB9696X3 RP
-7	401-0039-00			2						. WHEEL,SOLID:6 INCH OD	11431	#6707X
										(ATTACHING PARTS)		
-8	213-0160-00	7707		1						. SCREW,CAP,HEX H:0.375-16 X 2.0 INCH,STL	80009	213-0160-00
	213-0779-00	7708		2						. SCREW,CAP.:0.375-16 X 2.5,HEX HD,STEEL	83385	OBD
-9	200-0773-00			1						. HUB CAP,WHEEL:0.38 ID X 3.64 OD X 0.245" H	80009	200-0773-00
-10	401-0041-00			1						. BEARING,SLEEVE:0.38 ID X 0.495 OD X 1.375 L	79243	#5F34138-94
-11	210-1044-00			1						. WASHER,FLAT:0.375 ID X 0.75 INCH OD,STL	86928	OBD
										- - - * - - -		
-12	426-0382-01			1						. FR BASE,SCOPE:REAR	80009	426-0382-01
-13	213-0224-00			2						. SCREW,MACHINE:0.25-20 X 1.25" LONG,HHS	18488	OBD
	361-0268-00			2						. SPACER,SLEEVE:0.265 ID X 0.70 L,AL	80009	361-0268-00
-14	334-1123-10			1						. PLATE,IDENT:	80009	334-1123-10
-15	107-0026-01			1						. LINOLEUM:12.0 X 12.95 INCHES L	80009	107-0026-01
-16	436-0074-00			1						. TRAY,TSTEQ DLY:LOWER,12.95 X 12.25 INCHES	80009	436-0074-00

CROSS INDEX MFR. CODE NUMBER TO MANUFACTURER

MFR.CODE	MANUFACTURER	ADDRESS	CITY,STATE,ZIP
000AZ	AIR OIL PROD. CORPORATION	2400 E BURNSIDE	PORTLAND, OR 97214
04811	PRECISION COIL SPRING CO.	10107 ROSE ST.	EL MONTE, CA 91734
06004	BASSICK DIV., STEWART-WARNER CORP.	960 ATLANTIC STREET	BRIDGEPORT, CT 06602
07322	MINNESOTA RUBBER CO.	3630 WOODDALE AVE.	MINNEAPOLIS, MN 55416
07707	USM CORP., USM FASTENER DIV.	510 RIVER RD.	SHELTON, CT 06484
11431	GLEASON CORP.	2266 N. PROSPECT AVENUE	MILWAUKEE, WI 53202
12327	FREEWAY CORP.	9301 ALLEN DR.	CLEVELAND, OH 44125
18488	CONNOR SPRING AND MFG. CO., DIVISION OF SLOSS AND BRITTAIN	1101 MONTEREY PASS RD.	MONTEREY PARK, CA 91754
22599	ESNA, DIV. OF AMERACE CORP.	16150 STAGG STREET	VAN NUYS, CA 91406
74445	HOLO-KROME CO.	31 BROOK ST. WEST	HARTFORD, CT. 06110
75497	LAMSON AND SESSIONS CO., THE	5000 TIEDEMAN ROAD	CLEVELAND, OH 44144
78189	ILLINOIS TOOL WORKS, INC. SHAKEPROOF DIVISION	ST. CHARLES ROAD	ELGIN, IL 60120
79243	E R WAGNER MFG. CO.	4611 NORTH 32	MILWAUKEE, WI 53209
80009	TEKTRONIX, INC.	P. O. BOX 500	BEAVERTON, OR 97077
83385	CENTRAL SCREW CO.	2530 CRESCENT DR.	BROADVIEW, IL 60153

