

# TDS Error Log Viewer

This program connects to a TDS scope of 200, 300, 400, 500, 600, 700, 800, 1000, 2000 or 3000 series and displays the current error log.

The scope error log can be:

- 1: printed,
- 2: copied to a text file,
- 3: cleared. To avoid accidental clearing this procedure has to be confirmed twice.

If several supported TDS's are present on the bus it will connect to the one with the lowest address.

**Known issue:** Due to a firmware issue (bug or intentional) in the version 3.41 used in TDS 3000 no letter and TDS 3000B models this software will not work, thanks to Andrew for bringing it to my attention. It would be interesting if someone with a C-model with the latest firmware could try it and report back whether it works or not. That Error Log doesn't work has been confirmed by Tek in a slightly cryptic reply. Some other hidden functions don't work either and if you want to temporarily load v3.39 you can find it here: [Download v3.39](#). The latest version could be found on [Tek's website](#).

## Aug 27, 2017 - New version 1.2.3

### Changes from 1.2.2 to 1.2.3:

Due to the Firmware bug mentioned above the program would show a Run Time Error and quit when a TDS30xx or a TDS30xxB with

Firmware v3.41 was connected. Now information about the problem is displayed instead and the user must quit the program.

### Changes from 1.2.1 to 1.2.2:

Support for TDS3064B added. Thanks to Toru S. for bringing it to my attention.

### Changes from 1.2 1to 1.2.1:

Internal changes only, never published

### Changes from 1.1 1to 1.2:

Successfully tested on a TDS1002 so TDS1000 and TDS2000 series are now also supported.

No changes to appearance.

### Changes from 1.0 1to 1.1:

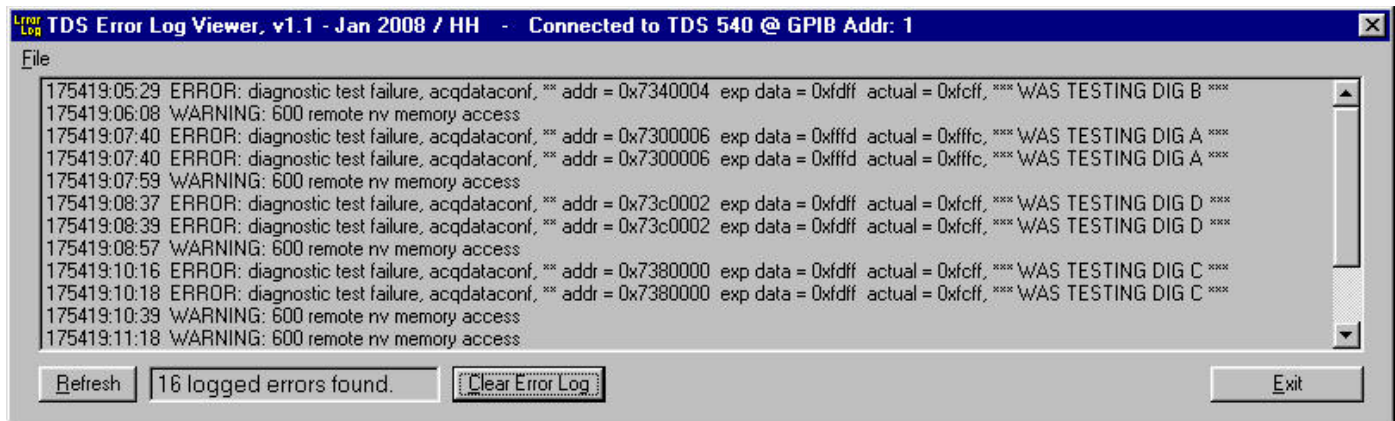
Changed printer font and document layout so long error codes won't be truncated when printed.

Added one button to refresh the list.

### Version 1.0

Initial version.

Here's a screen shot.



Note, it is normal for some TDS's to add a Warning message to the error log every time it is read.

You must have a NI GPIB card with the proper drivers installed. [Find and download National Instruments GPIB card drivers here.](#)

It is expected to work on any PC/win OS (not 3.1) with a correctly installed and working NI card.

Be sure to uninstall any previous version before installing this one or extract the \*.exe file from the \*.CAB file and replace your current file.

[Download TDS Error Log Viewer here.](#)

[Email me with comments.](#) /Håkan

[Home](#) / [Go back](#)