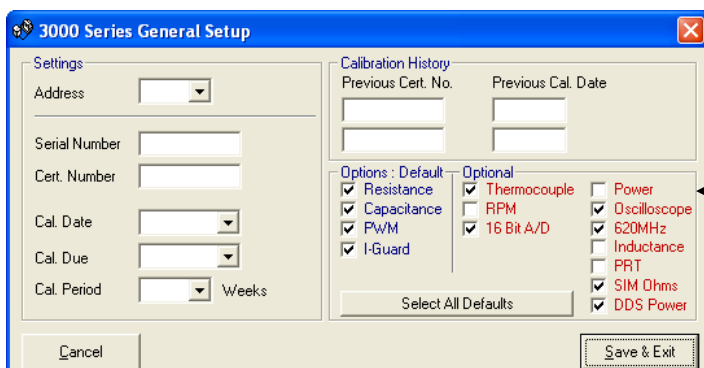
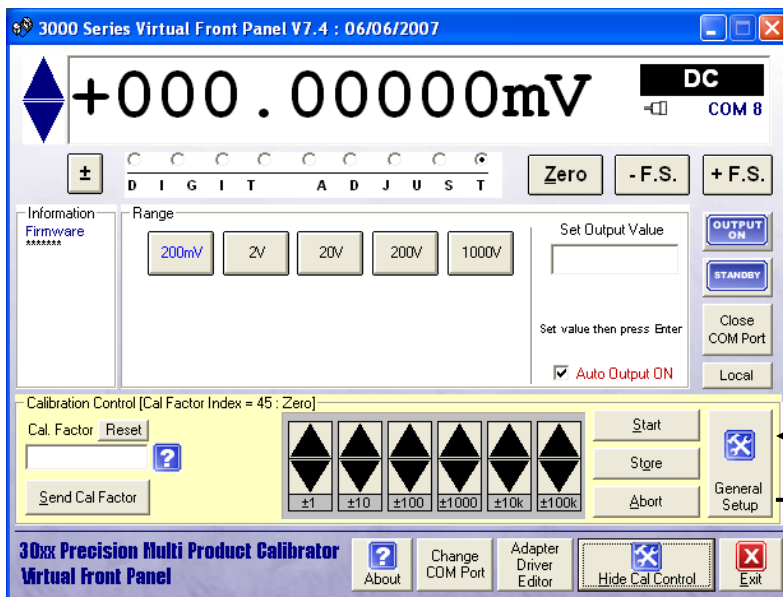
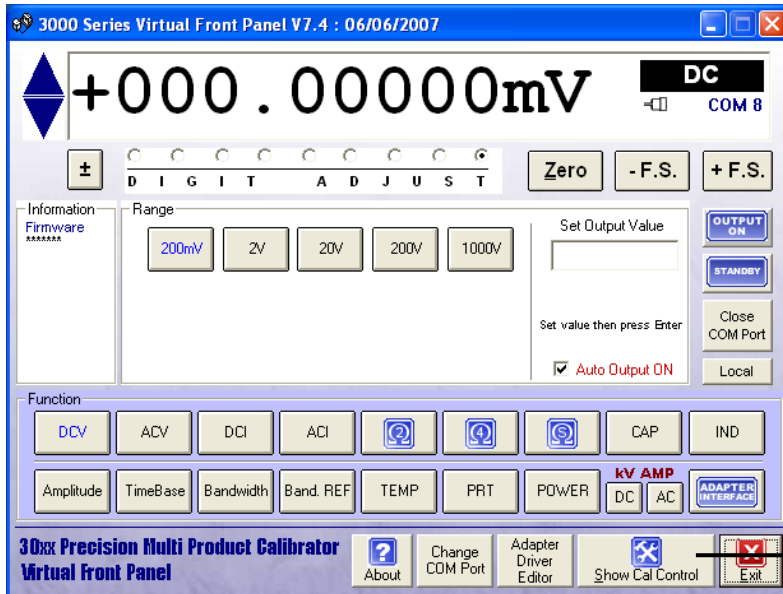


Calibrator Options & Settings

To set the installed options for the 3000 Series calibrator, select the general set-up function using the virtual front panel, shown below :



Once the options and setting screen is shown, the options installed can be selected and saved back to the calibrator. To apply these settings, press the **Save & Exit** button

Set options as required using checkboxes, then click **Save & Exit** to apply.

i **NOTE :** To allow new options setting to be loaded by calibrator, please turn calibrator off, then on again after saving new option settings.

i **NOTE :** All of the options require specific hardware to be installed in the calibrator. Selecting the option in the firmware will not allow this option to be used unless the hardware is fitted.