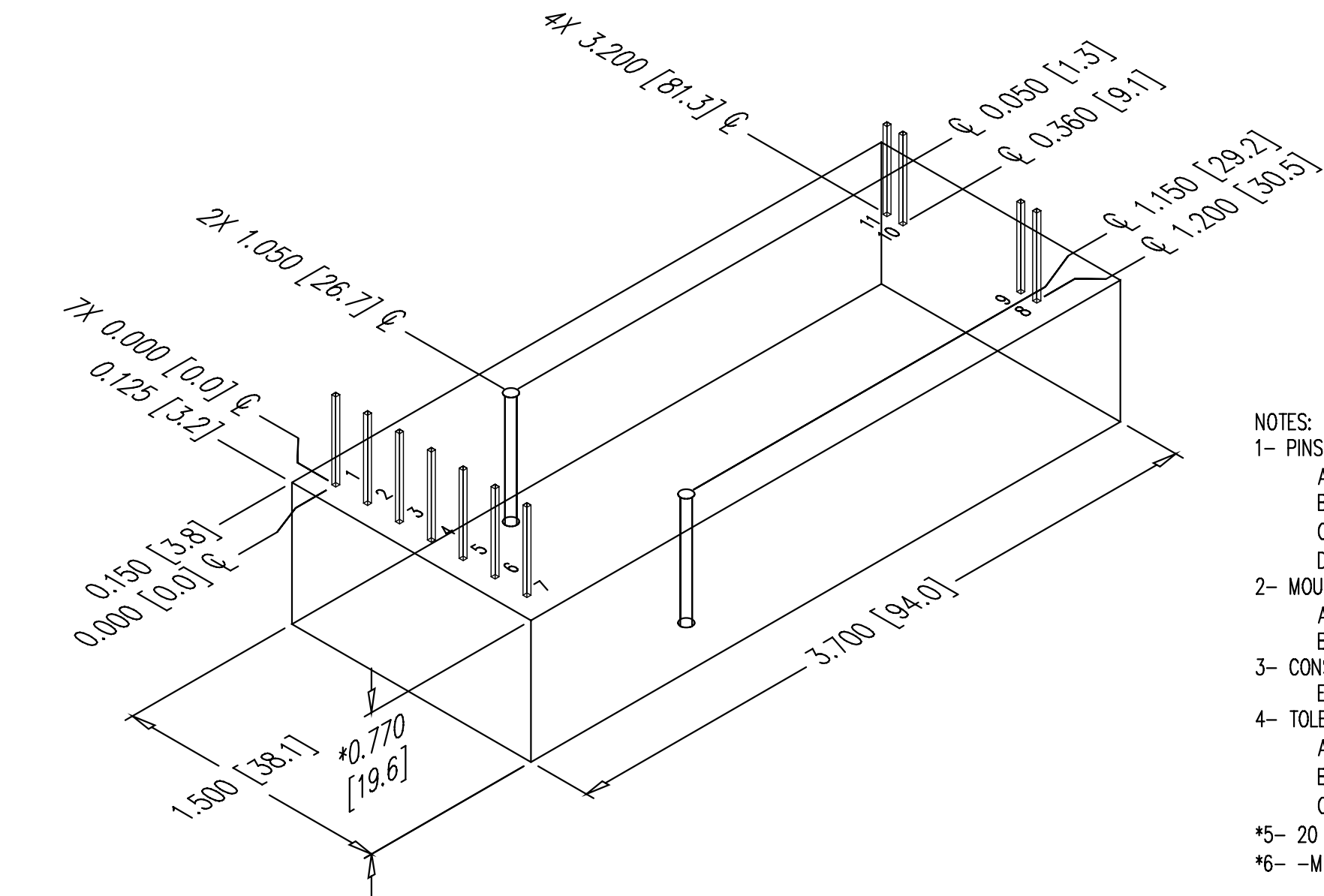


2



REVISIONS				
LTR	DESCRIPTION	BY	DATE	APPD
A	NEW RELEASE	D.S.	2/4/99	J.M.
B	ADDED METRIC DIM AS PER ECO #1935	J.T.	2/17/00	J.M.
C	ADDED DWG NO. PER ECO #2137	D.S.	01/12/05	J.M.
D	REVISED PER ECO #2743	SRO	3/1/02	D.P.
E	REVISED PER ECO #UV3136	SG	11/25/03	SRO
F	REVISED PER ECO #UV3245	RG	10/10/05	S.O.



NOTES:

- 1- PINS:
 - A- MATERIAL: GOLD PLATED 0.025 [0.64] SQ.
 - B- THE CENTER OF THE PINS AND MOUNTING HOLES ARE LOCATED FROM THE CENTER OF PIN 1.
 - C- PINS 1 THRU 7 SPACING 0.200 [5.08] ON CENTER, HEIGHT FROM COVER 0.470 [11.7] MIN.
 - D- PINS 8, 9 AND 10, 11 SPACING 0.100 [2.54] ON CENTER, HEIGHT FROM COVER 0.470 [11.7] MIN.
- 2- MOUNTING:
 - A- 2-56 X 0.30 [7.62] DP UNC-2B THD 2 PLACES.
 - B- THREADED POST MAY NOT BE FLUSH TO COVER.
- 3- CONSTRUCTION:
 - EPOXY FILLED DAP BOX CERTIFIED TO ASTM-D-5948.
- 4- TOLERANCE:
 - A- OVERALL +/-0.050 [1.27]
 - B- PIN TO PIN +/-0.015 [0.38]
 - C- MOUNTING HOLE LOCATION +/- 0.025 [0.64]
- *5- 20 & 30 WATT VERSIONS ARE AN ADDITIONAL 0.062 [1.57] IN HEIGHT.
- *6- -M EQUIPPED UNITS ARE AN ADDITIONAL 0.030 [0.76] IN HEIGHT.

B

B

A

A



UNLESS OTHERWISE SPECIFIED DIMENSION ARE IN INCHES TOLERANCES ARE: 2 PL DEC ± .02 FRACT ± 1/64 3 PL DEC ± .010 ANGLES ± 2'			CUSTOMER		ULTRAVOLT, INC. 1800 OCEAN AVE. FRNT, RONKONKOMA, N.Y. 11779 1-631-471-4444
			DRAWN	S. Orban	
HOLE DIA			CHKD	D. Parant	3/20/02
			TOLERANCES		MFG
.0135 THRU .125			MFG ENGR	N/A	
.126 THRU .250			PROCESS	N/A	
.251 THRU .500			QA	N/A	
.501 THRU .750			CHIEF ENGR	N/A	
.751 THRU 1.000			CFN: OL-003_revF_A-C.dwg		
1.001 THRU 2.000					
DASH NUMBER	NEXT ASSY	USED ON	PART NUMBER:		REV
APPLICATION			B OL-003		F
			SCALE	NONE	DO NOT SCALE THIS DRAWING
			SHEET 1 OF 1		1

2



1