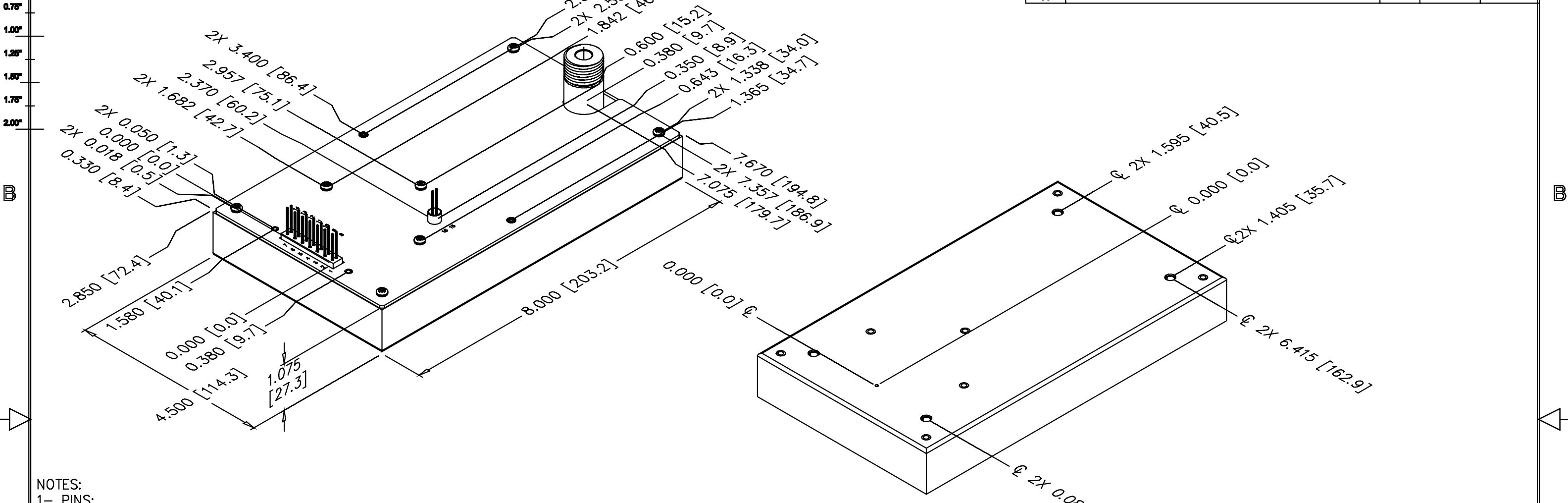


PROPRIETARY STATEMENT: ULTRAVOLT INC.  
CONFIDENTIAL DRAWING

REVISIONS				
LTR	DESCRIPTION	BY	DATE	APPD
A	RELEASED TO DOC-CTRL	A.S.	06/24/2010	



- NOTES:
- 1- PINS:
    - A- MATERIAL: GOLD PLATED 0.025 [0.64] SQ.
    - B- THE CENTER OF THE PINS AND MOUNTING HOLES ARE LOCATED FROM THE CENTER OF PIN 1.
    - C- PINS 1 THRU 14 SPACING 0.100 [2.54] X 0.200 [5.08] ON CENTER, HEIGHT FROM COVER 0.280 [7.11] MIN.  
SHOULDER MATERIAL: DIALLYL PHTHALATE 94V0,  
SHOULDER SIZE: 0.250 [6.35] X 1.400 [35.56] X 0.100 [2.54] HEIGHT FROM COVER.  
MTG HOLES FOR RETENTION BRACKET #2-56 X 0.125 [3.8] DEEP.
    - D- PINS 15 & 16 SPACING 0.100 [2.54] ON CENTER, HEIGHT FROM COVER 0.280 [7.11] MIN.  
SHOULDER MATERIAL: TEFLON,  
SHOULDER SIZE: OD 0.260 [6.60] X ID 0.230 [5.84] X 0.220 [5.60] HEIGHT FROM COVER.
    - E- H.V. CONNECTOR LGH SERIES, HEIGHT FROM COVER 1.0 [25.4] MIN.  
MATERIAL: ULTEM 94V0.
  - 2- MOUNTING:
    - A- BOTTOM MTG, 8-32X0.218 THD INSERT OR #8-32X0.440 [11.18] LONG THREADED STUD
  - 3- CONSTRUCTION:
    - EPOXY FILLED ALUMINUM BOX
    - CHEM FILM PER MIL-C-5541 CLASS 1A
  - 4- TOLERANCE:
    - A- OVERALL +/-0.025 [0.64]
    - B- PIN TO PIN +/-0.015 [0.38]
    - C- MOUNTING HOLE LOCATION +/- 0.025 [0.64]

UNLESS OTHERWISE SPECIFIED DIMENSION ARE IN INCHES TOLERANCES ARE:		CUSTOMER	
2 PL DEC ± .02	FRACT ± 1/64	DRAWN	S. Orban
3 PL DEC ± .010	ANGLES ± 2°	CHKD	
		MFG	N/A
		MFG ENGR	
		PROCESS	
		QA	
		CHIEF ENG	
		CR: OL-042_revA_HP_C_20-30_60-125W.dwg	

DASH NUMBER	NEXT ASSY	USED ON
APPLICATION		

**ULTRAVOLT, INC.**  
1800 OCEAN AVE. FRNT, RONKONKOMA, N.Y. 11779  
1-631-471-4444

OUTLINE  
HIGH POWER 'C' SERIES  
20-30C, 60-125W

B PART NUMBER: OL-042 REV A

SCALE NONE DO NOT SCALE THIS DRAWING SHEET 1 OF 1