



10  
0  
0  
0  
0  
0  
0  
0

1B  
Female print PCB  
50  
0.00 - 0.00 mm  
FGG.1B.310.CLAD72

[Request a quote](#)  
[PCB Eagle Pattern](#)  
[PCB Altium Pattern](#)  
[Catalog](#)

## TECHNICAL DETAILS

### Mechanics

Shell Style/Model	EP*: Elbow receptacle for printed circuit (solder or screw fixing)
Keying	1 key (alpha=0, plug: male contacts, receptacle: female contacts)
Housing Material	PPS (Polyphenylene) shell, other pieces nickel plated brass
Cable Fixing	∅ 0 - 0 mm
Variant	

### Performance

Configuration	1B.310/EPG : 10 Low Voltage
Insulator	L: PEEK
Rated Current	1.5 Amps

### Specifications

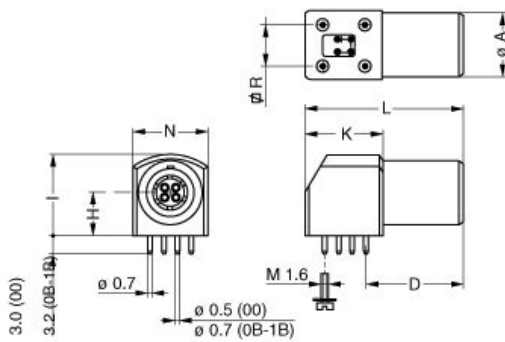
Contact Type: Print (straight)  
Max. Matings: 5000  
Contact Dia.: 0.5 mm (0.02in)  
R (max): 8.7 mOhm  
V<sub>test</sub> (contact-shell): 1500 V (AC), 2120 V (DC)  
V<sub>test</sub> (contact-contact): 900 V (AC), 1270 V (DC)

### Others

Temp (min / max): -55 °C / +250 °C  
 Humidity (max): <=95% [at 60 deg C / 140 F]  
 Vibration: 15 g [10 Hz - 2000 Hz]  
 Shock Resistance: 100 g [ 6 ms]  
 Salt Spray Corrosion: >1000 hr  
 Climatological Category: 50/175/21  
 Shielding (min): 75 dB (10 MHz)  
 Shielding (min): 40 dB (1 GHz)  
 IP Rating: 50

## DRAWINGS

### Draws



### Dimensions

	A	D	H	I	K	L	N	R
mm.	11	16.6	7.5	14	13.3	27	12.6	7.62
in.	0.43	0.65	0.30	0.55	0.52	1.06	0.50	0.30

## RECOMMENDED BY LEMO

### Tools

None

### Cables